

CHAPTER ONE

INTRODUCTION

1.1 Background Information

The provincial Departments of Social Development have an obligation to provide alternative care services to individuals and families. This includes the foster care grant which is primarily mandated to children who are in need of care and protection as prescribed in the Children's Act 38 of 2005. The Act directs provinces to conduct investigations and compile reports for the purposes of the Children's Courts, recommending that the children be placed under foster care. Once the foster care orders are issued, they have to ensure that these foster grants are managed effectively by ensuring that they are extended on time to maintain the legal status of the placement. These foster care orders entitle the children to have access to a basket of services, which include amongst others psycho-social support, health, education and foster care grant (Department of social development, 2013-2014).

The Department of Social Development provides a foster care grant (FCG) to foster parents. This particular grant provides financial support to foster parents to enable them provide adequate care to children under their foster care. These children would have been removed from their biological parents in order to protect them from abuse and neglect. Increasingly children who have lost their biological parents due to HIV/AIDS or other circumstances end up in foster care. Statistics reveal that there are over 500,000 children placed in the care of foster parents (SASSA, 2012). The expectation of the FCG is that in the long term foster parents will be able to exit the system and still be able to support themselves. Also the children under the care would have been assisted to become self-supporting in the future.

1.2 Problem statement and rationale for the study

According to the World Bank (2000, p.1) "Most safety net programs have some kind of exit strategy in place by which beneficiaries end their participation in the program. Exit policies generally cover both involuntary program exit and voluntary withdrawal from the program, which can occur when socioeconomic circumstances improve for beneficiaries so they accomplish programme objectives and no longer need program benefits". Although this is ideal what is currently happening in South Africa with respect to the FCG is that most parents tend to disown their foster children or try to return the children to the social workers after the child has turned 18 years old because they seem to struggle to support themselves when the grant is withdrawn. This points to the fact that foster parents are failing to come up with exit plans. The withdrawal of the foster care grant can erode quality of life, particularly in circumstances where the foster parents did not have exit plans. This study aims to explore whether there are exit plans put in place by the recipients of the foster care grant. This study will thus contribute to the discourse on social assistance in general and foster care grants in particular. Furthermore, it will help to sensitise social workers on the need for exit plans for the recipients of foster grants.

1.3 Research question

What are the exit plans of the recipients of the foster care grant in Soweto?

1.4 Aim and objectives of the study

The aim of the study was to explore the exit plans of the recipients of the foster care grant in Soweto and the challenges they face in coming up with these plans.

The secondary objectives of the study were:

- To establish the views of the recipients of foster care grant on the purpose of the foster care grant.
- To explore the understanding of the recipients of the foster care grant of the importance of an exit plan as part of the conditions of the grant.
- To establish the alternative arrangements made by the recipients of the foster care grant for their long-term support and that of the children under their care.
- To explore the challenges faced by the recipients of the foster care grant in Soweto in developing exit plans

1.5 Theoretical Framework

The research study was informed by the social development theory. According to Midgley (1995, p. 25), social development is a process of planned social change, designed to promote the wellbeing of the population as a whole in conjunction with a dynamic process of economic development. This implies that social development is linked to economic development thus the two are inter linked. The essential aim of social development is to improve human wellbeing and to create opportunities for individuals to realize their full potential. The provision of social assistance is eminently intended to meet the objectives of social development. Social assistance is thus concerned with human wellbeing and targets vulnerable individuals who are unable to meet their basic needs or take care of themselves. The aim of the foster care grant is to improve the lives of vulnerable children who, according to the Children's Act 38 of 2005 are in need of care and protection. The purpose of exit strategies for the foster care grant is to empower families so that they can exit the grant and be self-sustaining in the long term and to discontinue the cycle of dependence

The Children's Act 38 of 2005 makes provision for the care and protection of vulnerable children in South Africa through statutory intervention. Foster care is one of the social

welfare programmes aimed at providing statutory care and protection to these children. The Act requires different government departments to provide this programme and in turn requires a level of service integration through organised arrangements to ensure that service delivery is effective. However, the increased demand for the service and gaps within the organised arrangements to respond to the demand, led to the challenges that are widely experienced within the foster care programme. This strategy aims to provide a programme of action that will facilitate the implementation of The Children's Act 38 of 2005 which makes provision for the care and protection of vulnerable children in South Africa through statutory intervention. Foster care is one of the social welfare programmes aimed at providing statutory care and protection to these children (Department of social development, 2012). The Children's Act requires different government departments to provide the foster care grant programme and in turn requires a level of service integration which is holistic in nature through the systematic arrangements to ensure that service delivery is effective. However, the increased demand for the service and gaps within these arrangements to respond to the demand led to the challenges that are widely experienced within the foster care programme (Department of social development, 2012). This strategy aims to provide a programme of action that will assist in the execution of the provisions of the Children's Act and to achieve the Act's principles aimed at responding to the needs of the vulnerable children requiring foster care placement.

In South Africa the government has decided to follow the developmental approach towards service delivery. "This is mainly because this particular approach is founded on the recognition of the strengths of the individual, community, or group and their ability to grow and develop" (Department of Social Development, 2006, P. 5). The key principles guiding this approach to welfare delivery in South Africa include self-reliance, empowerment, and universal access to resources. Thus social development services should be available to all

vulnerable groups in society and no one must be denied access because of lack of resources or knowledge on how to access these resources which are meant to serve the people (Department of Social Development, 2006, p. 15-16). It is also very important to take note of the fact that developmental social welfare services are categorised into levels. These levels of intervention include prevention which is primarily focused around strengthening and building capacity and self-reliance of the client. The second level is early intervention which is widely focused on making use of developmental and therapeutic programmes to ensure that those who are identified as being at risk are helped before they require statutory services. The third level is that of statutory intervention in which services are aimed at supporting and strengthening individuals who are already at risk. This may be when a child is removed from their original home into the alternative care of a care giver or in this case a foster parent.

These levels of intervention clearly show a continuum that ranges from awareness to a more intensive intervention with regards to the safeguard of the child. The developmental approach is mainly focused around prevention services and parental care. It also implies that the preferred intervention would be to assist the family so that the child remains within the family system for as long as possible.

1.6 Brief overview of the methodology

The research study adopted a qualitative research approach as the information gathered consisted of the subjective experiences, practices and values of individuals receiving the foster care grant in Soweto. The study was exploratory in nature as it sought to gain an in-depth understanding of the attitudes, opinions, and perspectives of the participants.

The participants of the study were made up of ten foster parents in Soweto who were recipients of the foster care grant. Social workers working for the Department of Social Development in the Johannesburg Metro Region were used as key informants and a purposive sample of four social workers was selected consisting of both males and females. The methodology will be discussed further in details in chapter three.

1.7 Limitations

A limitation of the study is that generalisations are not possible. However the study was qualitative so the intention was not to make generalisations but rather explorations. Another limitation is that the truthfulness of the answers cannot be guaranteed as the participants could have given socially desirable answers to protect themselves from being disqualified from the foster care grant.

1.8 Conclusion

The Foster Care Grant is meant to provide support to foster parents so that they are able to care and nurture the children placed under their care. It is thus expected that upon taking up the role of being a foster parent one should implement an exit plan or strategy in order to insure a secure measure that will assist in terms of the further upkeep of the child once the grant has been terminated. This chapter has discussed and introduced the foster care grant, the statement of the problem, research question, aim and secondary objectives and a theoretical framework. This chapter has also provided a brief overview of the methodology and limitations of the study.

1.9 Organisation of the report

The study first starts with chapter two which engaged with the relevant literature around foster care and the foster care grant. This included looking into studies of poverty, the historical assistance in South Africa and exit strategies. Chapter three of the study looks at the research methodology of the study. This included exploring the research approach, the study population and sampling, research instrumentation, methods of data collection, the pre-test, data analysis, trustworthiness of the study, ethical considerations, and the limitations of the study. Chapter four of the study focused on the presentation and discussion of findings according to the set objectives. The last chapter of the study, chapter five entails the summary, conclusion and recommendations thereof the research.

CHAPTER TWO

LITERATURE REVIEW

2.1 Introduction

This literature review defines the Foster care grant and its reason for existence and the impact it has on its beneficiaries. Poverty and inequality in South Africa are also discussed as causal factors for the provision of foster care in South Africa. This review also discusses social assistance in South Africa.

2.1.1 Foster care and the Foster Care Grant in South Africa

Vulnerable children in South Africa receive care and protection through various forms of alternative care, which include temporary safe care, adoption, foster care and placement in child and youth care centers through a formal court order. According to the Department of Social Development (2012) foster care is when a child in need of care and protection is legally placed in the care and safety of an adult person other than the biological parents. Children can be removed from their parents if they are abused, neglected or abandoned. Orphaned children may also be placed in foster care. The foster care order normally lasts for two years, but the court may also order that the child stays with the foster parents until he/she turns 18 years. Foster parents will continue to be supervised by a registered social worker (Department of Social Development, 2012).

Child protection services involve legally authorised interventions that cater for the protection of children who are alleged or confirmed to be in need of care and protection (South African Society for the Prevention of Child Abuse and Neglect, 2011, p.14). The Children's Act 38 of 2005 verifies this under section 150 as it defines a child in need of care and protection as a child that has been orphaned and is without any visible means of support be it

physically, emotionally, or financially. "A child who is regarded as being in need of care and protection can be regarded as a child who is exposed to situations that can be harmful to the child and prevent the child from achieving his/her developmental milestones" (Gil, 2006, p. 23). This definition is important when taking into account foster children as they are defined as orphaned children who are in need of care and protection. The government in response to foster children's needs thus tries to provide for the needs of these children through the foster care grant that is given to the child's foster care parent or care giver.

Section 28 of the South African Constitution states that "every child has the right to a family care or parental care, or to appropriate alternative care when removed from the family environment". Within the prescribed child care system in South Africa, "foster care is normally considered to be the preferred form of substitute care for children who cannot remain with their biological families and who are not available for adoption" (Department of Social Development, 2012, p.7). This reflects the belief that the family is normally the environment most suited to the healthy growth and development of the child. "Many South African children have benefitted from court-ordered foster care. It is, however, doubtful whether this form of care as provided for in the Child Care Act of 2005 can adequately deal with the country's changing needs" (Department of Social Development, 2012, p. 4). At present, there are approximately 50 000 children in court-ordered foster care in South Africa, and social workers are having difficulty in finding sufficient foster families (Statistics SA, 2012, p. 6).

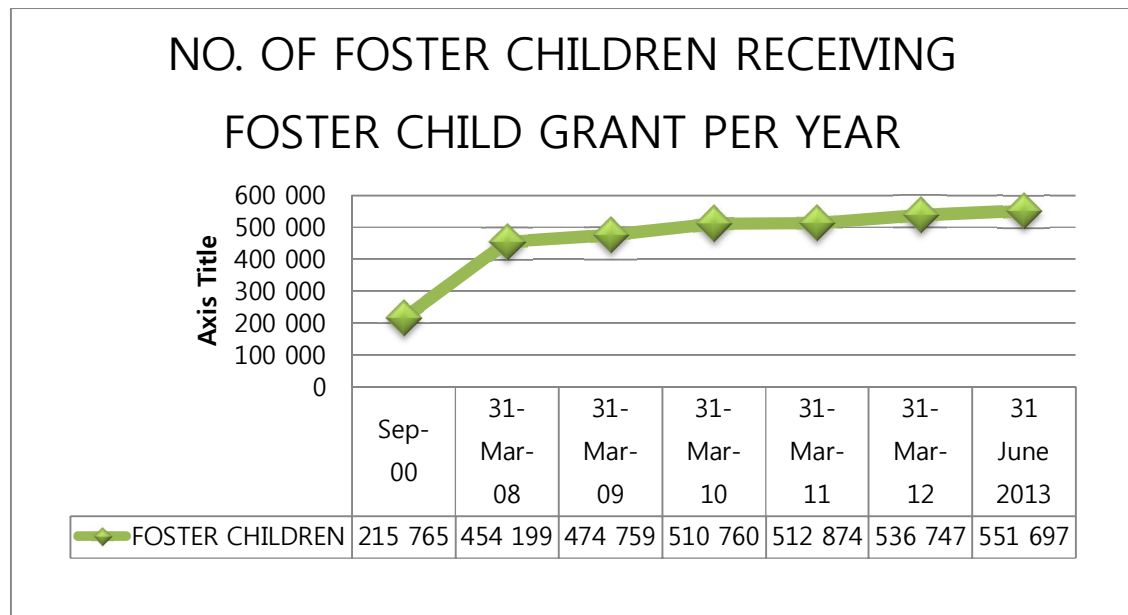
Responsibilities pertaining to foster parents include maintenance and care to the child; and allowing reasonable access to the child's biological parents if required. Foster parents may receive maintenance for the child from the biological parents in terms of a contribution order. This order is part of the foster care order (Department of Social Development, 2012). Along with this, the foster parent may receive a social grant for the child under the Social Assistance

Act (SASSA, 2009). According to this Act, a Foster Child Grant should be paid by the State to all foster parents. Applications for this grant should be made to SASSA. The foster care court order will be required for the application (Department of Social Development, 2012).

The Foster Care Grant falls under the realm of social assistance. Thus the FCG is one of the social grants that are provided under South Africa's social assistance system. The International Labour Organisation (2006, p. 1) states that "Social assistance can be seen as a set of non-contributory social programmes for low-income households or other vulnerable groups". Social assistance is means tested and non-contributory. It is fully funded by government. The objective of social assistance is mainly to reduce or alleviate poverty (Department of Social Development, 2012).

Figure 1.1

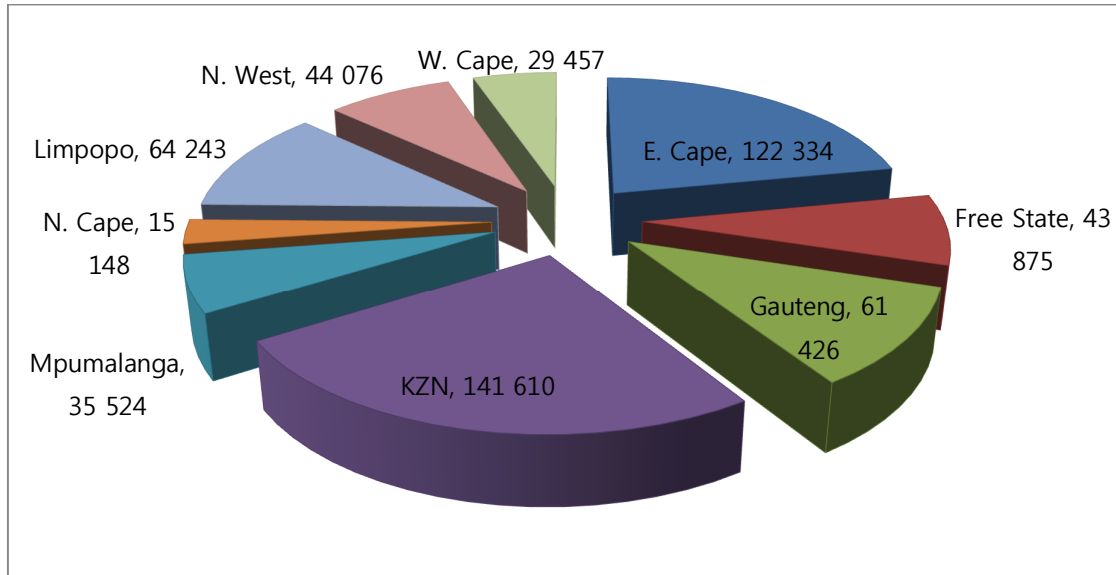
NUMBER OF CHILDREN RECEIVING FOSTER CHILD GRANT PER YEAR



Source: Department of Social Development (2013-2014)

Figure 1.2

CHILDREN RECEIVING FOSTER CHILD GRANTS



(SOCPEN, 31 July 2013)

2.1.2 Poverty

Most of the recipients of the foster care grant are those who are living under the poverty line (Department of Social Development, 2002). Poverty can be defined as the inability or failure to meet one's basic needs such as food and shelter. Patel (2005, p. 3) highlights that "Africa's economic malaise is self-perpetuating, as it provokes more of the problem of poverty, warfare, misgovernment, and corruption that created it in the first place. The most direct consequence of low GDP is Africa's low standard of living and quality of life. Except for a fraction of the wealthy elite and the more prosperous peoples of South Africa and the Maghreb, Africans have very few consumer goods; Quality of life does not connect exactly with a nation's wealth". Poverty is multi-dimensional and cannot be reduced to a single definition (Patel, 2005). Some researchers such as Powell and Jason (2012) have attempted to broaden the concept of poverty to include aspects of wellbeing and inequality which reflect the lived experience of being poor more realistically. Two such items focus on evaluating

people's access to enough food and income to cater for all their household needs. Although these are by no means a comprehensive measure of poverty, they do measure some aspects of people's ability to secure basic necessities. The SASSA (2010) survey has demonstrated that most black people still perceive themselves as lagging behind the other racial groups in South Africa in terms of access to enough food and income. These perceptions are important because they inform how people explain poverty. Policy-makers should take cognisance of how people explain poverty since it has direct bearing on how they experience it.

According to Stewart (2005) a major part of the population lacks the means to meet basic needs in South Africa, including food, housing, education and health provision. According to Patel (2005, p. 75) "even if it were possible to reach agreement on just what 'basic needs' are, there is also a need to take into account more than just meeting basic needs. This is because economic divisions could continue to exist even once everyone's basic needs have successfully been met". In many countries, including South Africa, social assistance is provided in order to alleviate poverty and thus providing the means for the poor to meet their basic needs.

Poverty, inequality and oppression are highly prevalent in the SA. South Africa's gini-coefficients is one of the highest in the world. A significant proportion of the population lacks the means to meet basic needs in South Africa, including food, housing, education and health provision. This is because in some respect, stark economic divisions could continue to exist even once everyone's most basic needs have successfully been met. Thus it is important to acknowledge the impact of equality and inequality in terms of access to resources (Magasela, 2005). Resources can range from access to employment, water, electricity, access to public resources, and even access to social grants including the foster care grant.

Figure 1.3

Vital poverty and inequality statistics

Total population	51.7m
South Africans living under the poverty line	41.4%
Gini coefficient	0.70
Average annual household income	R103 204
Average household size	3.4
Households living in a formal dwelling	77.6%
South Africans receiving government grant or pension support	15.6m

Sources: All Media Products Survey, 2009; National Income Dynamics Survey, 2008; South African Census 2011

Inequality in South Africa can be said to be closely related or linked to education. On one hand, tertiary education opens up the route to 'middle class' occupations (Magasela, 2005). On the other, young men and women who leave school prior to matric are usually confined to a lifetime of low-paid employment or chronic or intermittent unemployment. How a student performs in school is not simply a matter of individual ability (Carter and May, 1999, p. 23). Rather, there is a clear relationship between parental class and children's educational attainment (Carter and May, 1999). A social democratic agenda must include the promotion of more equal opportunities; examples of these opportunities are equal access to education and the labour market. Under apartheid however massive investment in public education meant that the children of poor, mostly Afrikaans-speaking white workers did not end up with the same lack of skills as their parents (and were thus able to secure better-paid employment without explicit racial discrimination in the labour market) Carter and May

(1999). "The challenge facing post-apartheid South Africa is how to promote better opportunities for children from poor backgrounds, regardless of race, but within the budgetary constraints set by the available tax base" (Carter and May, 1999, p. 24). . Some individuals fall into poverty because of a temporary spell of economic deprivation as a result of divorce, death of a spouse/bread winner or unemployment (Carter and May, 1999, p. 24). Others may be poor for the duration of their childhood, with little upward mobility over the course of their development. These individuals may face concentrated neighbourhood poverty as well as family-level hardship (Duncan and Aber, 1996). These are also linked to foster parents and also foster children themselves as there are most likely to be exposed to poverty and family hardships.

The transitory poor in contrast however are those who briefly fall into poverty, but after a spell are able to climb back out (Duncan and Aber, 1996). Many more foster children come into random contact with poverty than experience persistent poverty. "Income instability also often creates emotional stress for foster parents, which can in turn lead them to be less nurturing and more punitive with their foster children than are parents with greater income stability" (Michaelis, et al., 1993, p.73).

2.1.3 Historical Context of Social Assistance in South Africa

Social assistance was introduced during the colonial period and consolidated during apartheid. The social assistance schemes included the provision of housing, employment, health, social security and education (Department of Social Development, 2012)The main objective of the social assistance programme in the pre-1994 period was to protect the white minority against certain contingencies by means of providing them with social assistance (Department of Social Development, 2012). This served to reduce poverty among white people. According to Van der Berg(1994, p. 24) "In the past, the purpose of extending parts

of the system to other groups was not to create a comprehensive coverage for the whole population, but was often determined by political, electoral and economic considerations. This was due to the fact that the social welfare provision system during apartheid was not meant to cater for everyone in the country but was mainly based on race, class, and gender. Patel (2005, p.47) states that in 1994 the establishment of a democratic government led by Nelson Mandela's African National Congress marked the end of apartheid. While apartheid was officially over, its legacy was alive and continues today. The South African government was tasked with the overwhelming challenge of integrating the previously oppressed black population into the economy. According to Thomson Learning (2005, p. 2) "The South African government implemented programmes aimed at improving the standard of living for the majority of the population by providing housing, basic services, education, health care, and employment opportunities". This was done so that the government can try and do away with social and economic injustices of the past while trying to reduce the gap between the rich and the poor.

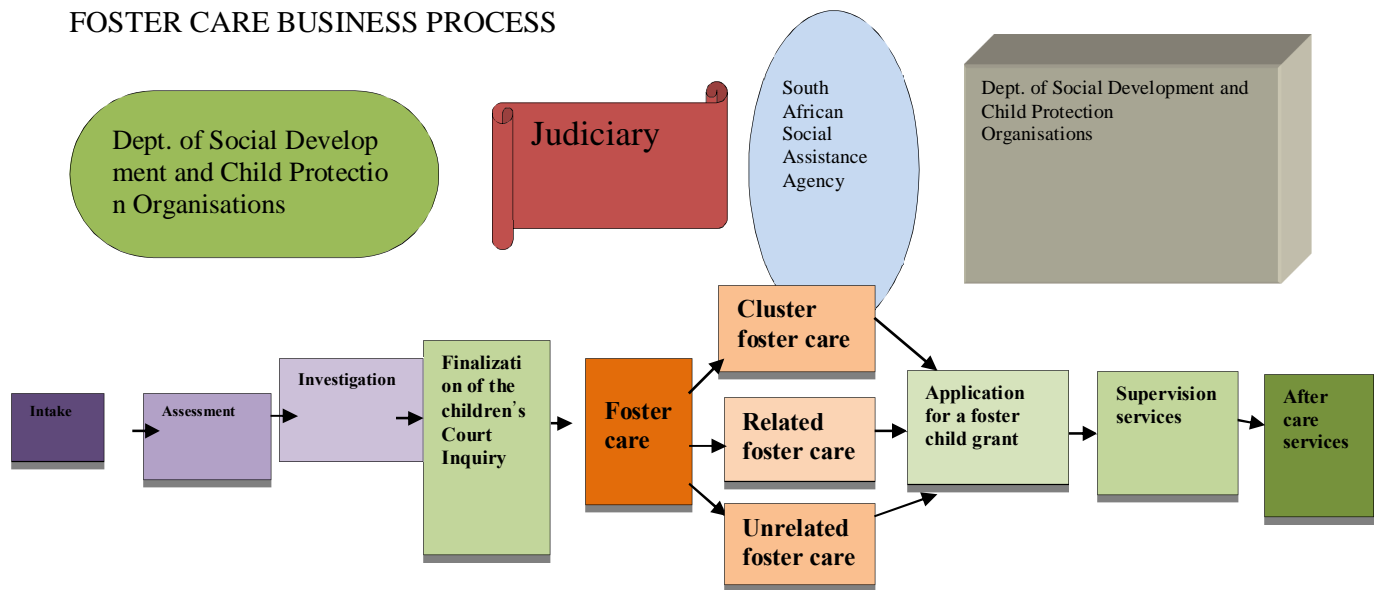
The government adopted the White Paper for Social Welfare in 1997 which provides a framework for the provision of social welfare. The White Paper recognizes that the primary challenge facing the welfare system is to devise appropriate and integrated strategies to address the alienation and the economic and social marginalization of vast sectors of the population who are living in poverty, are vulnerable, and have special needs (Lund Committee 1997, p. 7). This is to say that the main aim of the White paper is to create a more inclusive society by means of closing of the gaps that continue to marginalise certain segments of the South African society. The Lund committee (1997, p. 8) recognises that "the first category of social assistance provides cash transfers and social relief to ensure that people have adequate economic and social protection during times of need. The second

category aims to be an expression of the country's commitment to human and social rights and affords assistance as well as provides developmental services for people with special needs. The policies were formulated with the recognition that social and economic developments are interdependent and mutually reinforcing processes that cannot separate economic development from social development. The White Paper for Social Welfare envisages that social security in general and social assistance in particular is critical for improving human welfare.

South Africa's social welfare system affords some form of assistance to over one-quarter of its 50 million citizens (Department Social Development, 2002). While the South African government has a constitutional commitment to ensure income security for its citizens, there is widespread concern that social assistance has stretched to a point of un-sustainability (Department Social Development, 2002). Furthermore, there is pervasive concern that the expansion of social assistance has resulted in beneficiaries' dependence on cash transfers from the state. The Social Assistance Act No. 59 of 1992 provides for non-contributory social grants to adults and children, funded as part of the national comprehensive social security system, which include Child Support Grant, Care Dependency Grant and Foster Child Grant.

Figure 1.4

FOSTER CARE BUSINESS PROCESS



Source: Department of Social Development (2013-2014)

2.1.4 Exit strategies

An exit strategy plan in terms of foster care is a plan describing how the programme intends to withdraw its resources while ensuring that achievement of the programme goals are not threatened and that progress towards these goals will continue even after the grant has been terminated (Rodgers & Macias, 2002). Exit strategies may also include several contingency plans that speak to factors, such as the high prevalence of poverty in the South African community. Contingency plans may also include planning for further resources when it may not be possible to exit entirely from program as isö (Gardner et al., 2005. p.8).

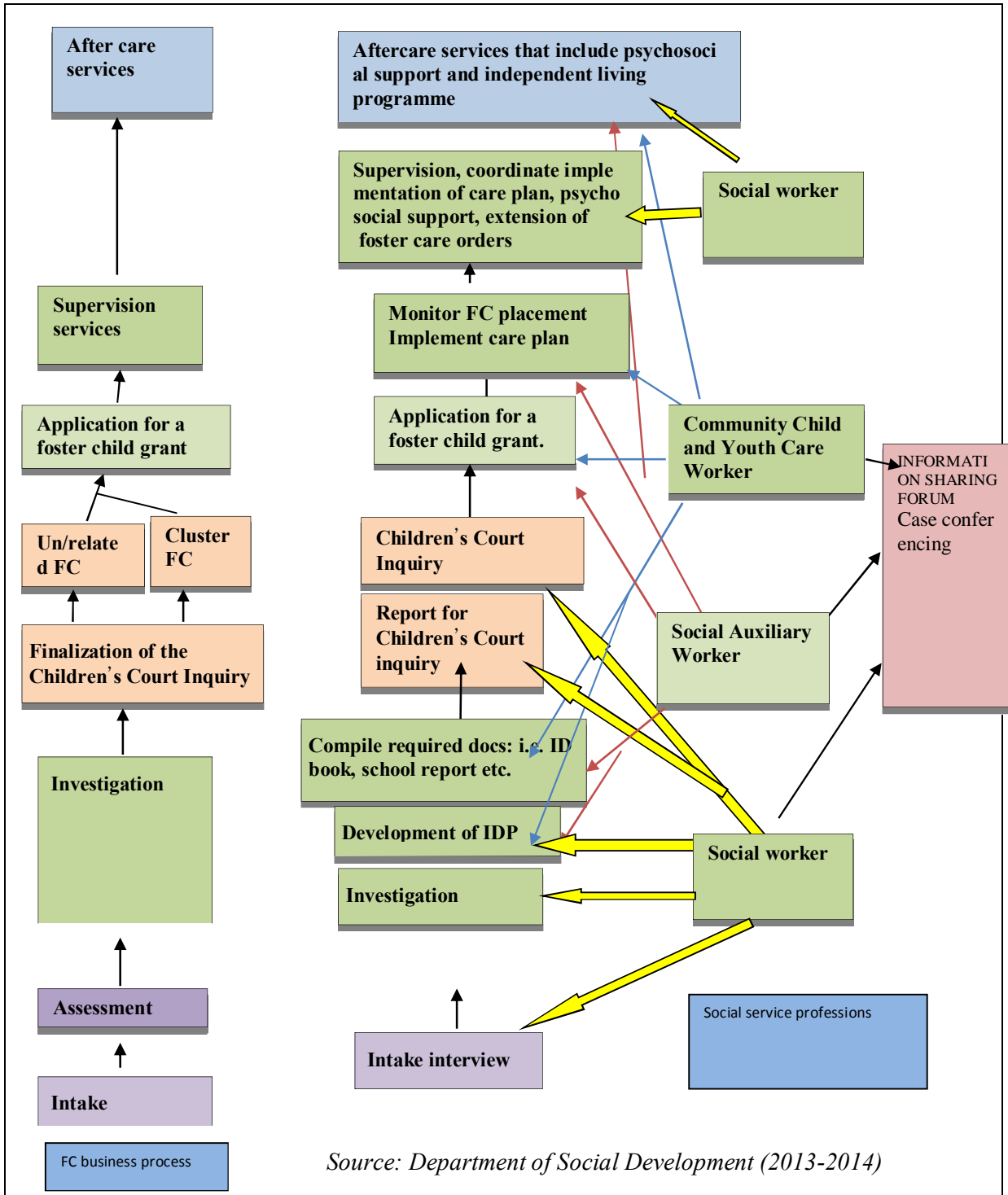
There are apparently several deliberations when establishing the timeframe for programme exit strategies according to Rodgers & Macias (2002). Exit strategies should be built into the design of programmes from the beginning. This will encourage the development of interventions that are sustainable, since an Exit Strategy is, in essence, a sustainability planö (Rodgers & Macias, 2002, p. 16).

This must be clearly communicated to the community mainly because programme implementation will influence exit strategy activities. It is important that the exit plan remains flexible with the expectation that some of the exit criteria and benchmarks may need to be modified during the programme cycle (Department Social Development, 2002). Further, implementing exit plans in a gradual, phased manner is recommended, as the staggered graduation of project sites can contribute to sustained outcomes by applying lessons learned from earlier sites to those that come later (Rodgers & Macias, 2002, p.17). This process of a planned exit strategy either by the receiver of the foster care grant or the department will in the long term help to support the sustainability of the grant in the long term.

The planning and implementation of exit strategies is not an easy task to accomplish. Exit strategies are thus part of good programme planning and their basic principle of promoting sustainable programme outcomes and components should not be entirely a foreign concept. The vision of the national strategy for Families 2009-2013, is to contribute towards well-functioning, independent, resilient and socially integrated South African family that is able to nurture, support and provide care to its members (Department Social Development, 2002). This strategy was meant to provide a foundation for the Department's interventions with various family structures towards achieving this vision and the foster care families are part of the social structures that can contribute towards nurturing children that are independent, resilient and integrated into the society (Social Development, 2002). So far however when it comes to the foster care grant undocumented evidence has shown that most foster care grant recipients have not been able to come up with an exit strategy in order to exit the grant system and this could mainly be because the poverty rate in South Africa is very high.

Figure 1.5

FOSTER CARE STAGES



2.1.5 Conclusion

This review has reviewed the key literature pertaining to the foster care grant and exit plans. This literature review has thus defined the Foster care grant and its reason for existence and the impact it has on its beneficiaries. Poverty and inequality in South Africa were also discussed as causal factors for the provision of foster care in South Africa. The review also discussed social assistance in South Africa and explored the notion of exit strategies.

CHAPTER THREE

RESEARCH METHODOLOGY

3.1 Research approach

The research adopted a qualitative approach as the information gathered consisted of the subjective experiences, practices and values of individuals receiving the foster care grant in Soweto. A qualitative research design has been known to discover and capture the rich meaning in data collection (Dey, 1993). The study was exploratory in nature as it sought to gain an in-depth understanding of the attitudes, opinions, and perspectives of the participants.

3.2 Study population and sampling procedures

The study population was made up of foster parents in Soweto who were recipients of the foster care grant. According to the statistics register at the Department of Social Development (2013), there are over 45000 foster parents around the Johannesburg Metro Region. The statistics are not disaggregated according to residential areas. It is projected that 60% of those receiving the grant live in the Soweto area. Purposive sampling was used to select the participants for this study. Specifically, availability sampling was used to select 10 foster parents from lists kept by Department of Social Development in Johannesburg. The first 10 foster parents that agreed to participate were recruited for the research. Social workers working for the Department of Social Development in the Johannesburg Metro Region were used as key informants and a purposive sample of four social workers were selected. Purposive sampling starts with a purpose in mind and the sample is thus selected to include people of interest and exclude those who do not suit the purpose (Babbie, 2008). The social

workers involved in this study were recruited through the Human Resources Department at the Department of Social Development in Johannesburg Metro region.

3.3 Research instrumentation

Two separate semi-structured interview schedules for the foster care parents and key informants were utilised to collect data. The advantage of using a semi structured interview schedule is that it allows the researcher to probe further and thus get more information that may assist the researcher (Babbie, 2008). Furthermore these interview schedules have assisted in establishing patterns in the participants' knowledge, interpretation and attitudes towards the foster care grant and their exit plans.

3.4 Method of data collection

Data were collected using face to face in depth interviews. These interviews were conducted with the recipients of the foster care grant living within the Soweto area and with the key informants. Face to face in depth interviews allowed the researcher an opportunity to probe and pursue other areas that emerged from the interview. Interviews provide access to the perspective of those interviewed beginning with the assumption that what they have to say is meaningful (Babbie, 2008). The interviews were tape recorded with the permission of participants.

According to Scheurich (1997, p 47) the advantages of using interviews are that the researcher can read non-verbal cues to enable understanding of the verbal response and get in-depth information on a particular topic. According to Gillham (2000, p.47), the

researcher through interviews, is able to see and understand what is reflected by the participant by prompting and probing. The disadvantages of using interviews are that biases are difficult to rule out. Furthermore, the participants may not be willing to share everything with the researcher (Greenstein, 2003).

3.5 Pre-Testing

Pre-testing of the instruments was carried out with two foster parents in Soweto who were not part of the study and one social worker from the Department of Social Development who was also not be part of the study. The pre-test helped the researcher to establish whether or not the questions and responses were valid and reliable or if they were appropriate, necessary and sufficient enough to answer the research question. From the actual pre-tests, the researcher was able to see that there were no problems with the tools as both participants and key informants were able to respond to the questions as set out.

3.6 Method of data analysis

Data was analysed using thematic content analysis. According to Ezzy (2002, p. 47) "Thematic content analysis is an inductive process that involves the researchers eliciting emerging categories from the data that was not specified, prior to conducting the research". The researcher went through the transcribed data to look for information pertinent to answering the research question. The researcher started off by extracting the main themes in the data, which was the grouping of statements, words and phrases that assisted in answering the research question. The identification of these themes was created from the raw data through reading and re-reading of transcripts.

3.7 Trustworthiness

According to Lincoln and Guba (1985, p. 72) "Trustworthiness is a moral value considered to be a virtue; a qualitative study cannot be called transferable unless it is credible, and it cannot be credible unless it is dependable". This included some factors that could be used to measure if the research ensured trustworthiness. The researcher tried and ensured that the research entailed truthfulness, and this was ensured through the use of only credible sources. Factual information was provided by key informants and research participants. The information gathered from other research studies added to the body of this particular study. The researcher also ensured that the research was well within its scope of focus. The researcher also ensured that the research results were consistent with other research results. This is all in line with "Guba's (1985) model based on four aspects of trustworthiness that are relevant to both quantitative and qualitative studies: (a) truth value, (b) applicability, (c) consistency, and (d) neutrality" (1985, p. 72).

3.8 Ethical considerations

The ethical factors that were taken into consideration in this study were:

Autonomy

Research participants were first and foremost respected as individuals. This entailed respecting their rights as individuals and also taking their social and cultural aspects into consideration (Loewenberg & Dolgoff, 1996). In this study, the researcher maintained autonomy by respecting the participants and treating them as individuals rather than subjects. This was maintained by means of allowing the participants to freely express themselves.

Informed consent and voluntary participation

According to Loewenberg and Dolgoff (1996) research participants should be informed about the content of the research study, the right to confidentiality and the right to have their identification concealed (anonymity). Participants were informed that participation was voluntary and that they could withdraw from the study at any point. The information regarding the nature of the study was presented in the form of an information sheet. Participants were also required to sign a consent form.

Confidentiality

According to Babbie (2008), confidentiality means that a researcher will ensure that participants' names and identity are not disclosed to anyone. In the research, participants were not identified by their natural names. All data and personal information were kept confidential. Participants were informed that only the researcher and the researcher's supervisor had access to the data. The ethical requirements for research with human subjects according to the University of the Witwatersrand were adhered to throughout the research.

Anonymity

Data was kept anonymous by means of protecting the identity of the participants. However, the researcher may often need to take more than this basic step to protect a participant's identity (O'Leary, 2004, p.66). The best way that the researcher sought to protect the research participants from the unintentional breaking of confidentiality in this study was through the process of anonymisation. In order to try and insure anonymity the researcher gave the research participants pseudonyms. This was done because research participants did not want to be identified due to the sensitive nature of this study.

3.9 Limitations of the study

A possible limitation of the study was that generalisations were not possible. However the study was qualitative so the intention was not to make generalisations but rather explorations. Another limitation is that the truthfulness of the answers cannot be guaranteed as the participants could have given socially desirable answers to protect themselves from being disqualified from the foster care grant. In order to minimise this, the researcher tried and clearly explained to the participants that there would be no consequences arising from the answers they provided in the study. The researcher also ensured that the participants understood that there was no link between the study and the activities of the Department of Social Development.

3.9 Conclusion

This chapter has explained in detail the research approach which is qualitative in nature. The study population and sampling have also been discussed. This chapter has also taken into account research instrumentation including the pre-test, method of data collection and data analysis. The chapter also explored the ethical considerations that were taken into account during the course of the study and the trustworthiness of the research.

CHAPTER 4

PRESENTATION AND DISCUSSION OF FINDINGS

4.1 Introduction

This chapter presents and discusses the findings of the study. The findings are presented and discussed as per the objectives of the study. The chapter begins by presenting the profile of the participants.

4.2 Profile of participants

A total of ten foster parents in Soweto who are the recipients of the foster care grant participated in the study. The profile of the participants is depicted in Figure 1.6.

Figure 1.6 Participant profile

Participant	Gender	Age	Years of receiving the foster care grant	Employment status	Race
1	Female	33	7 years	Part time employment	African
2	Female	67	7 years	Pensioner	African
3	Female	78	13 years	Pensioner	African
4	Female	40	2 years	Self-employed	African
5	Female	74	4 years	Pensioner	African
6	Female	35	2 years	Unemployed	African
7	Female	32	5 years	Unemployed	African
8	Female	26	7 year	Unemployed	African
9	Female	35	12 years	Unemployed	African
10	Female	28	6 years	Unemployed	African

The ages of the participants ranged from 26-78. One of the participants was self-employed, one had part time employment, three were pensioners and the remaining five were unemployed.

4.3.1 Views of the recipients on the purpose of the foster care grant

The first objective was to establish the views of the recipients of the foster care grant on the purpose of the foster care grant. According to the Department of Social Development (2012) the foster care grant is a grant that is provided to foster parents who are fostering children who may have been removed from their biological parents in order to protect them from abuse and neglect. Increasingly children who have also lost their biological parents due to HIV/AIDS or other circumstances end up in foster care. However from the findings of the study only six out of the ten participants interviewed gave a similar response of what the foster care grant is about.

Most of the participants when asked to describe what the purpose of foster care grant was their responses indicated that it was to meet the immediate basic needs of both the foster child and the family in which the child is placed. This is especially evident by participant 3 as she stated that *“It helps me pay for the rent as I am the bread winner at the house, so I buy food and pay for the society”* .

This is clearly articulated by participant 8 who stated that *“The grant is to support us people who can't support themselves to help us take care of children and feed them, make sure they attend school and are dressed. So it's for people that don't work”*. This response implies that the foster care grant is meant to provide for the poor and help support families with foster children who have no other means of support.

4.3.2 Understanding of the importance of an exit plan

The second objective of the study was to explore the understanding of the recipients of the foster care grant of the importance of an exit plan as part of the conditions of the grant. When participants were asked about the importance of having an exit plan put in place as part of the condition of the foster grant most of the participants had no idea as to what an exit strategy was or entailed. This is disturbing given that some of the participants have been receiving the foster care grant for over 5 years.

Most of the participants stated that they had not been told about an exit strategy hence they did not have an exit plan for exiting the grant. After the researcher explained to the participants what an exit strategy was the general reaction that the participants gave was that they felt that it would be helpful to have a plan to support themselves and the children under their care so that they have something to fall back on once the grant was terminated however issues of poverty hinder them from implementing such a strategy. Participant 7 stated that *“I can say that what bothers me a lot is that the money is little and even if I say I want to budget for the children still the money is little. I have tried to save the money but I went back again and ate it because there was no money for food so that’s my challenge”*.

From the study and the responses it was evident that even though the majority of the participants were experiencing high levels of poverty and unemployment the rest of the participants mentioned problems with being able to fully provide for themselves and the children placed under their care. The issue of poverty and unemployment thus makes their understanding of the importance of having an exit strategy not seem like a primary need or necessity.

Studies such as those conducted by Chiroro et al. (2009) highlight the importance of preparing the youth for independent living earlier in life to afford them an opportunity to

develop the required skills to be self-sufficient and live independently as young adults. In terms of this preparation foster parents and the department of Social Development through the development of exit plans can be able to help these children further their education to decrease poverty and award them a better opportunity when entering the job market.

When key informants were questioned if their clients had exit plans put in place in order to exit the grant system the general response was that there was no set plan put in place and this is mainly because unemployment is a huge challenge in terms of coming up with exit plans. The main issue is then that the money they get has to support the child and the family and they are then forced to rely on the money for their daily needs instead. Another challenge is that there are other children in the family who also need to be taken care of and do not have the privilege of receiving the foster care grant. So it is thus pointless to expect foster parents to come up with a plan for exiting the grant because the money is used from hand to mouth and is the only form of income that these families have. This again highlights the importance of having exit strategies in place in order to tame dependency and promote self-reliance amongst the recipients of the foster care grant and other social assistance programs.

4.3.3 Alternative arrangements for the long term support of foster children

The third objective was to establish alternative arrangements made by the recipients of the foster care grant for their long term support and that of the children under their care. Most participants stated that they were unable to plan or make alternative arrangements for their long term support and that of the children placed under their care. Participant 7 stated that *“I have tried to save the money but I went back again and ate it because there was no money for food so that’s my challenge”*. Financial constraints came up as a common theme in many of the participants’ responses for not being able to come up with exit strategies. Not only do they struggle financially to provide, but they struggle with balancing the demands of the child or children who are in their care. They also experience erratic provisioning for their foster children as they tend to rely heavily on the foster care grant on its own and this support is often irregular and unpredictable in terms of whether or not it will meet the needs of the child and the family as a whole.

Eight out of the ten participants that were interviewed were unemployed and only one had temporary employment and the other was self-employed. Parents and caregivers of the children generally experienced a high degree of poverty. In terms of income what came out of the study is that more than half the participants were surviving on the grant entirely which is R800 per month. Some of the families in the study may be described as *“transitory poor”* that is those who briefly fall into poverty, but after a spell are able to climb back out, participant 4 stated that *“I’m not dependent on the foster care grant because they don’t give you a child to foster unless if you have a stable income set in place. I have a tuck shop and rooms that people rent out. My husband also works”*. This shows that she was able to use her house and become self-employed and thus climb out of the spell of poverty. It is also however

important to note that of the ten participants three were pensioners and were unable to attain income in terms of finding work due to their age.

The problem it seems with the Foster care grant is that it is standing alone and it should be coupled with other measures of capacity building for these different families because the rate of the unemployment in south Africa. The foster care grant should ideally be used to only meet the child's needs and not to carry the families through which is the sort of the disjuncture right now because the foster care grant is used to carry families though because of their poverty situation, not only to meet the children's needs. Capacity building should thus be instituted so that those family members that can work or require skill can also contribute so the foster care grant can be used for the child and not the family.

The rationale thus of having an exit strategy is that it can be used as a control measure which is supposed to help with the budgetary implications on the part of the government because not everyone can receive foster care or the other grant because it was not meant for everyone. So in terms of the criteria there should be an exit plan because people cannot be completely reliant on the grant. So the main aim of having an exit plan put in place is to cut the cycle of dependency and promote sustainability. Foster parents are however facing challenges in terms of formulating exit strategies and this is mainly linked to the high levels of poverty. It was also however suggested by key informants that foster parents need capacity building, if they cannot find employment, if they cannot be able to provide for themselves because this then leads them to becoming dependent on the grant. The grant is no longer there to attend to the child's needs but it's rather used to attend to the foster parents' poverty and that's a challenge. The dependency that is caused by these circumstances of poverty and lack of employment and also ill health results in most foster parents becoming unable to envision even coming up with exit strategies to exit the grant system. It's almost the case that when the child reaches 21 foster parents are forced to exit the system but if that were not the case foster

parents would rather continue receiving the foster care grant as it is the only means of financial support that they receive. This highlights the importance of having an exit strategy so that recipients do not have a situation where people become completely dependent and go on without being self-reliant. Planning for the long term support of foster parent and children is thus very important as it can make a great difference in the future of these families in attempting to reduce poverty and government dependency.

4.3.4 Challenges faced by foster parents

The last objective was to explore the challenges that are faced by the recipients of the foster care grant in developing exit plans. Social support in terms of sharing of knowledge and facilitation of creating exit strategies was seen as a common challenge when it comes to the way in which recipients relate to the department of social development. This is in relation to help that can assist them in order to come up with exit strategies.

Social support is the perception that one is cared for, has assistance available from other people, and that one is part of a supportive social network. The social support can be emotional, financial, informational, or companionship. Social support can be measured as the perception that one has assistance available in terms of helping recipients of the FCG come up with exit plans and explaining the importance of having set exit plans. Support can come from many sources, such as family, friends, organizations, co-workers, and so on (Department of social development, 2012).

Participant 5 stated that she had no idea what an exit plan was as she has never heard of it while one of the key informants who was participant 11 in the study explained that *“when the grant is allocated...it is allocated in terms of sec 150 of the children’s act which finds the child in need of care and protection and then the children’s court grants the two year court order and after two years you go back and renew the court order and they check the living conditions of the child then the presiding officer then extends the court order sometimes for two years and sometimes for five years or one years, based on this they then also monitor the reports in terms of sections 65 of the children’s act and sometimes its extended till the child is 18 years of age. After the child is 18 and still in school then the grant can get extended through the social workers motivation and it is then extended till the child is 21 years old if the child is still in school then it gets cut off”*.

This statement made by the key informant clearly shows that it is expected of social workers to continue services and support to foster parents but due to high levels of case loads and pending court dates they are unable to provide the necessary support to the foster parents. The challenge is then that social workers are highly focused around getting their legislative work which is a process on its own and are thus unable to focus on anything else than that which is seen as an immediate need. Help in terms of the facilitation of exit strategies was not mentioned by any of the key informants or any of the participants. This is evident because participant 9 stated that *“I have never heard of it before so it’s news to me”*. This is an indication that there is lack of information sharing between department officials and recipients of the grant.

The abovementioned challenge experienced by foster parents in terms of coming up with exit strategies may be linked to the level of supervision and support that is needed by foster families through the department of social development.

4.4 Conclusion

This chapter has presented and discussed the findings of the study as per the objectives. The chapter began by giving a brief description of the participants. The above analysis has shown that the recipients of the foster care grant had very little knowledge of exit strategies. Due to this lack of awareness recipients were unable to come up with exit plans and the cycle of dependency was being recreated. Participants were also faced with numerous challenges that also hindered them from having exit plans. These challenges included lack of social support from the department of social development, no facilitation of exit strategies, and poverty.

CHAPTER FIVE

SUMMARY, CONCLUSIONS AND RECOMMENDATIONS

5.1 Introduction

This chapter presents the summary of the main findings of the study, the conclusion that was reached and the recommendation about the foster care grant and exit strategies. The main findings will however be discussed in relation to the set objectives of the study as stated in chapter one.

5.2 Main findings based on the study objectives

This section will attempt to summarise the main findings of the study as per each objective that was explored in the previous chapter.

5.2.1 To establish the views of the recipients of foster care grant on the purpose of the foster care grant

Only six of the participants in the study had a brief idea of what the foster care grant was about. It was however disturbing to find that most of the participants who were asked to describe the purpose of foster care grant was, their responses indicated that the FCG was not only working to meet the immediate basic needs of the foster child but the family as a whole. This then means that the money for the grant is not sufficient enough to save or use for an exit strategy.

5.2.2 The second objective of the study was to explore the understanding of the recipients of the foster care grant of the importance of an exit plan as part of the conditions of the grant

When participants were asked about the importance of having an exit plan put in place as part of the condition of the foster grant some participants, however most of the participants had no idea as to what an exit strategy was or entailed. That some of the participants have over 5years of experience in the grant system.

5.2.3 The third objective of the study was to To establish the alternative arrangements made by the recipients of the foster care grant for their long-term support and that of the children under their care

In the study conducted most participant stated that they were unable to plan or make alternative arrangements for their long term support and that of the children placed under their care let alone consider coming up with exit plans. Financial struggle and hardship thus came up as a common theme in many of the participants' responses for not being able to establish alternative arrangements or coming up with exit strategies. Not only do they struggle financially to provide, but they struggle with balancing the demands of the child or children who are in their care.

Eight out of the ten participants were unemployed and only one had temporal employment and the other was self-employed. Parents and caregivers of the children generally experienced a high degree of poverty. This highlights the importance of having an exit strategy so that we do not have situations where people become completely dependent and go on without being self-reliant.

5.2.4 The last objective of the study was to explore the challenges faced by the recipients of the foster care grant in Soweto in developing exit plans

Social support in terms of information sharing and helping foster parent formulate exit plans was seen as a common challenge when it comes to the way in which recipients relate to the department of social development. This is in relation to help that can assist them in order to come up with exit strategies. social workers were found to be highly focused around getting their legislative work done which is a process on its own and are thus unable to focus on anything else than that which is seen as an immediate need.

5.3 Conclusion

The study has identified that most of the participants and key informants agree that there are no exit strategies set in place. Given the above perhaps it is then not far-fetched to suggest that the Department of Social development needs to come up with effective programmes that will empower the recipients of the grant and help them to become self-sustaining and not dependent on the grant. The findings of this study clearly indicate that there is a need for such an intervention as previous initiatives to support foster parents and their families come up with exit plans and strategies have failed. The social assistance policy in South Africa also then needs to be reviewed in terms of persisting on empowerment and working together with the broader government. This is to create job opportunities so that people are able to provide for themselves and will not be bothered by depending heavily on state for financial assistance. Failure to come up with exit strategies can be clearly linked to high levels of poverty.

To conclude this report the findings clearly indicate that there are no exit plans or strategies put in place from the recipients of the foster care grant who are living in Soweto for exiting the foster care grant thus far.

5.4 Recommendations

Based on the findings of the study, the following recommendations are offered:

5.4.3 Educational support

- ✿ Stronger relationships should exist between the recipient of the foster care grant and their respected social workers to ensure individual attention to their needs in as far as exit strategies are concerned.
- ✿ Due to the fact there is lack of knowledge on exit plans and strategies the department of social development should perhaps hire external consultants to help in the education and implementation of exit strategies.

There should be awareness programmes on a national scale that should ensure that all social assistance beneficiaries are aware of exit programs and strategies for exiting the grant.

5.4.2 Recommendation for future studies

- ✿ Future studies should explore the importance of setting out exit strategies
- ✿ Future studies could also look at developing a policy that will focus on exit strategies as far as social assistance is concerned. This should also focus on the implementation of such a policy

References:

Aslin, R.N., (1993). "Commentary: the strange attractiveness of dynamic systems to development". In Thelen, Esther; Smith, Linda C. *A Dynamic systems approach to development applications*. Cambridge, Massachusetts: MIT Press.

Babbie, E (2008). *The Basics of Social Research*. (5thed.), Belmont, CA: Thompson Wadsworth

Bronfenbrenner, U. (1979). *The Ecology of Human Development: Experiments by Nature and Design*. Cambridge, MA: Harvard University Press.

Carter, M. R., & May, J., (1999). Poverty livelihood and class in rural south world development. *Journal of developmental studies* (pp.23-25).

De Wet, J.A.; Labuschagne, G.N.; Chiroro, P.M. (2009). *South Africa as a modern society*.

Department of Social Development, 2012. *Foster cares grant allocations*. <http://blacksash.org.za/index.php/your-rights/children/item/you-and-your-rights-foster-accessed> august 2012

Dey, I. (1993). *Qualitative data analysis*. London: Routledge.

Duncan & Aber., (1996). *Neighbourhood conditions and structure*. In *Neighbourhood Poverty: Context and Consequences for Child and Adolescent Development*, ed. GJ Duncan, J Brooks-Gunn, JL Aber. New York: Russell Sage.

D S Rothman -Foster care placements : Section 15(1)(b) of the Child Care Act 74 of 1983 (as amended)ø(1999) Vol. 2 No. 3 The Judicial Officer98.

Ezzy, D. (2002). *Qualitative analysis: Practice and innovation*. Crows Nest, Australia: Allen & Unwin

Gardner, W. L., Avolio, B. J., & Walumbwa, F. O. (Eds.). (2005). *Authentic leadership theory and practice: Origins, effects, and development*. San Diego, CA: Elsevier.

Gillham, Bill (2000). *Case study research methods*. London: Continuum

Greenstein, Theodore N. òReview of Research in the Sociology of Workö . *Contemporary Sociology*, p. 363-364.

- Hall, R. (2012). *Discrimination among oppressed populations*. Lewiston, NY: Mellen Press.
- Ife, J., (2006). *Community based alternatives in the age of globalisation*. Person Education Australia, P. 51.
- Lincoln, Y. S., & Guba, E. G. (1985). *Understanding and validity in qualitative research*. Harvard Educational Review, 62(3), p. 279-300.
- Loewenberg, F.M & Dolgoff, R. (1996). *Ethical decisions for social work practice*. (4th ed.). Itasca, Illinois: F.E. Peacock Publishers.
- Lund Committee (1997). White Paper on Social Welfare. Accessed May 1, 2013. <<http://www.info.gov.za/view/DownloadFileAction?id=127937>>
- Magasela, W., (2005). *'Towards a constitutionally-based definition of poverty in South Africa'*. South Africa 2005-2006, p.46-66, Cape Town: Human Sciences Research Council.
- Michaelis R, Asenbauer C, Buchwald- Senal M, Haas G, Krageboh-Mann I., (1993). *Transitory neurological findings in a population of at risk infants*. Early Hum.Dev. World Academy of Art & Science, USA.
- Mid-year population estimates, South Africa, 2012, statistics South Africa, 2012. Retrieved February 5, 2014, from www.statssa.gov.za.
- Midgley, J.(1995). *Social development: The developmental perspective in social welfare*. Thousand Oaks, CA: Sage Publications.
- O'Leary, L.B. (2004). *The Essential Guide to Doing Research*. London: Sage Publications Ltd.
- Patel, L., (2005). *Social welfare and social development in South Africa*. Cape Town. Oxford University Press.
- Powell, J. (2009). *'Social theory, aging, and health and welfare professionals: A Foucauldian "toolkit"'*. Journal of Applied Gerontology 28 (6), 669-682. Available from <http://dx.doi.org/10.1177/0733464809335596>

Rogers, B. and Macias, K., (2002). *Program Graduation and Exit Strategies: A Focus on Title II Food Aid Development Programs*, FANTA Technical Note No. 9, November 2002.

South African Social Service Agency, (2010). SASSA

Sewpaul, V. (2001). "Models of intervention for children in difficult circumstances in South Africa" *Child welfare*: 571-586

Scheurich, J.J. (1997). *A postmodernist critique of research interviewing. In Research method in the postmodern* London: Falmer Press. p. 61-79

Stewart, I. B., (2005). *Research in social science*. Society for Free Radical Research (Europe). 5th to 9th July, Berlin, Germany

Surender, R., (2010). "Social Assistance and Dependency in South Africa: An Analysis of Attitudes to Paid Work and Social Grants." *Journal of Social Policy* 39.2: 72-105

The Children's Act, 2005 (Act No. 38 of 2005)

Thomson Learning (2012). "South Africa: Tackling the Legacy of Apartheid." Accessed April 15, 2013.

<http://www.swlearning.com/economics/kennett/kennett2e/KennettSouthAfrica.pdf>.

Trout, A.L.; Hagaman, J.; Casey, K.; Reid, R.; Epstein, M.H. (2008). *Children and Youth Services Review*. Volume 30, Issue 9, September 2008, Pages 979-994

Van Der Berg, (1994). *Social assistance in modern times*: Routledge.

White paper for Social welfare (1997).

file:///C:/Users/26758296/Downloads/White_Paper_on_Social_Welfare.pdf

World Bank (2013). *Supported by the Social Safety Net Global Expert*.

<http://siteresources.worldbank.org/SAFETYNETSANDTRANSFERS/Resources/281945-1291746977764/6-programexit.pdf>

Appendix 1: Post graduate approval for proposal

University of the Witwatersrand, Johannesburg
Faculty of Humanities – Postgraduate Office

Private Bag 3, Wits 2050, South Africa • Tel: +27 11 717 8202 • Fax: +27 11 717 4037



Miss Rendani Rembuluwani
3452 Dzimalweli Street
P.o.tshiwelo
Soweto
Johannesburg
1818

Student Number: 382796

Dear Miss Rembuluwani

18 October 2013

APPROVAL OF PROPOSAL FOR THE DEGREE OF MASTER OF ARTS BY COURSEWORK AND RESEARCH REPORT

I am pleased to be able to advise you that the readers of the Graduate Studies Committee have approved your proposal entitled "An exploration of the exit plans of the beneficiaries of the foster care grant in Soweto" I confirm that Prof Edwell Kaseke has been appointed as your supervisor in the Social Development department.

The research report is normally submitted to the Faculty Office by 15 February, if you have started the beginning of the year, and for mid-year the deadline is 31 July. All students are required to RE-REGISTER at the beginning of each year.

You are required to submit 2 bound copies and one unbound copy plus 1 CD in pdf (Adobe) format of your research report to the Faculty Office. The 2 bound copies go to the examiners and are retained by them and the unbound copy is retained by the Faculty Office as back up.

Please note that should you miss the deadline of 15 February or 31 July you will be required to submit an application for extension of time and register for the research report extension. Any candidate who misses the deadline of 15 February will be charged fees for the research report extension.

Kindly keep us informed of any changes of address during the year.

Note: All MA and PhD candidates who intend graduating shortly must meet your ETD requirements at least 6 weeks after your supervisor has received the examiners reports. **A student must remain registered at the Faculty Office until graduation.**

Yours sincerely

MR NTSEARE

Mpho Ntseare
Postgraduate Division
Faculty of Humanities
Private Bag X3
Wits, 2050
Tel: +27 11 717 4007
Fax: +27 86 211 7362

TEL: +27 11 717 4007
FAX: +27 11 717 4001
WITS 2050
PRIVATE BAG X3
UNIVERSITY OF THE WITWATERSRAND
POSTGRADUATE DIVISION
JOHANNESBURG

MR NTSEARE

Yours sincerely

Appendix 2: Human research ethics committee clearance certificate



Research Office

HUMAN RESEARCH ETHICS COMMITTEE (NON-MEDICAL)
R14/49 Rembuluwani

CLEARANCE CERTIFICATE

PROTOCOL NUMBER H13/10/06

PROJECT TITLE

An exploration of the exit plans of the beneficiaries of the foster care grant in Soweto

INVESTIGATOR(S)

Ms R Rembuluwani

SCHOOL/DEPARTMENT

Human & Community Development/Social Work

DATE CONSIDERED

18/10/2013

DECISION OF THE COMMITTEE

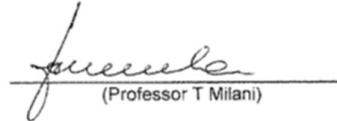
Approved Unconditionally

EXPIRY DATE

28/11/2015

DATE 29/11/2013

CHAIRPERSON



(Professor T Milani)

cc: Supervisor : Prof E Kaseke

DECLARATION OF INVESTIGATOR(S)

To be completed in duplicate and **ONE COPY** returned to the Secretary at Room 10003, 10th Floor, Senate House, University.

I/We fully understand the conditions under which I am/we are authorized to carry out the abovementioned research and I/we guarantee to ensure compliance with these conditions. Should any departure to be contemplated from the research procedure as approved I/we undertake to resubmit the protocol to the Committee. **I agree to completion of a yearly progress report.**



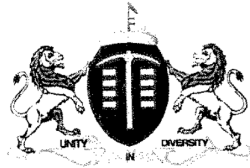
Signature

29/11/2013

Date

PLEASE QUOTE THE PROTOCOL NUMBER ON ALL ENQUIRIES

Appendix 3: Approval for research from the Department of Social Development



GAUTENG PROVINCE

SOCIAL DEVELOPMENT
REPUBLIC OF SOUTH AFRICA

Enquiries : Refilwe Makapela
011 355 7676 ; Cell No. 082 469 3131
Sub-directorate Research and Policy Co-Ordination
Dir.: Research and Demography
CD: Development and Research

Dear Miss R. Rembuluwani

RE: YOUR APPLICATION TO CONDUCT RESEARCH WITHIN THE DEPARTMENT

Thank you for your application to conduct research within the Gauteng Department of Social Development.

Your application on the research on **“An exploration of the exit plans of the beneficiaries of the foster care grant in Soweto”** has been considered and approved for support by the Department as it was found beneficial to the Department’s vision and mission.

The approval is subject to the Departmental terms and conditions as endorsed by you on the 4/10/2013

May I take this opportunity to wish you well for the research.

Looking forward to a value adding research and a fruitful co-operation.

With thanks.

MS.W.R. TSHABALALA
HEAD OF DEPARTMENT OF SOCIAL DEVELOPMENT

DATE..... 15/11/2013.....

Appendix 4

An exploration of the exit plans of the beneficiaries of the foster care grant in Soweto

Participant Information sheet

Good day

My name is Rendani Rembuluwani. I am a registered postgraduate student on the Masters in Social Development at the University of the Witwatersrand. As part of the requirements for the degree, I am conducting research into the exit plans of foster parents who are receiving the Foster Care Grant. It is hoped that the study will help sensitise both foster parents and social workers on the need to put in place exit plans for the long term support of foster parents and their families.

I therefore wish to invite you to participate in my study. Your participation is entirely voluntary and refusal to participate will not be held against you in any way. If you agree to take part, I shall arrange to interview you at a time and place that is suitable for you. You may withdraw from the study at any time and you may also refuse to answer any questions that you feel uncomfortable with answering. Please note that the estimated time that the interview session might take is about an hour. The interviewer is also willing and able to conduct the interview in your preferred language. Should you not be able to read or write the researcher will be able to assist you with this regard.

With your permission, the interview will be tape-recorded. No other than me and my supervisor will have access to the tapes. The tapes and interview schedules will be kept for two years following any publication or for six years if no publications emanate from the study. The tapes will be stored in a safe where no one except me and my supervisor will be able to access them. Please be assured that your name and other personal details will be kept confidential and no identifying information will be included in the final research report. I will provide every participant with a pseudonym (false name) to protect your identity. This will be done because you may not want to be identified due to the sensitive nature of this study. The results of the research will be reported in the form of a research report that will be stored in the main library as well as the research website. This report will be available to anyone who wishes to view it.

Please feel welcome to ask any questions regarding the study. I shall answer them to the best of my ability. You may contact me on 0768248277. My supervisors name is Professor E. Kaseke and his telephone number is 011 7174472 .Should you wish to receive a summary of the results of the study; an abstract will be made available on request. Thank you for taking time to consider participating in the study.

Regards,

Rendani Rembuluwani (Masters Student)

Appendix 5

An exploration of the exit plans of the beneficiaries of the foster care grant in Soweto

Consent form

Participant consent form

Please note that this research will not entail any risks or benefits as it for academic purposes alone, from the information gathered the researcher might use direct quotations but will insure that your identity remains withdrawn.

I hereby consent to participate in the research project. The purpose and procedures of the study have been explained to me.

I understand that my participation is voluntary and that I may refuse to answer any questions that I do not feel comfortable with or withdraw from the study at any time without any negative consequences. I also understand that my responses will be kept confidential.

Signed by _____

Date: _____ at: _____

Participant name: _____ signature: _____

Rendani Rembuluwani (Masters Student): _____

Appendix 6

An exploration of the exit plans of the beneficiaries of the foster care grant in Soweto

Tape recording Consent form

From the information gathered the researcher might use direct quotations but will insure that your identity remains withheld. Please be assured that your name and other personal details will be kept confidential and no identifying information will be included in the final research report. I will provide every participant with a pseudonym (false name) to protect your identity. This will be done because you may not want to be identified due to the sensitive nature of this study. Please also be assured that no other than me and my supervisor will have access to the tapes.

I hereby consent to tape recording of the interview. I understand that my confidentiality will be maintained at all times and that the tapes will be destroyed two years after any publication arising from the study or six years after completion if there is no publications.

Signed by _____

Date: _____ at: _____

Participant name: _____ signature: _____

Rendani Rembuluwani (Masters Student): _____

Appendix 7

To the Department of Social development

REQUEST FOR PERMISSION TO CONDUCT A RESEARCH STUDY WITH THE SOCIAL WORKERS.

An exploration of the exit plans of the beneficiaries of the foster care grant in Soweto

My name is Rendani Rembuluwani, student no. 382796 and I am a post graduate student registered for the Masters in Social Work degree at the University of the Witwatersrand. As part of the requirements for the degree, I am conducting research on the topic. The study aims to explore the exit plans of the recipients of the foster care grant in Soweto it also aims to explore the perceptions of social workers at the Department of Social Development about the foster care grant. It is envisaged that the findings may provide useful feedback to the Department of Social Development on social assistance.

I hereby request permission to conduct my research with the social workers as key informants in the study. Participation in the study will be entirely voluntary and the social workers will be provided with participants information sheets explaining what the study entails and also consent forms prior to participating in the study.

The interviews will not include any sensitive issues. Therefore, there will not be a need for the social workers to be referred for any supportive counselling following the interview. The interviews will not conflict with the social workers time of service but arrangements will be made for times when they are available such as lunch time or after work. There for the research will not have a negative impact on their working hours

My supervisor is Prof. E. Kaseke

Tel: (011) 717 4472

Email: Edwell.Kaseke@wits.ac.za.

Ethical clearance from the University for the Study will be obtained only after permission has been granted from the Department of Social Development. I therefore request permission to conduct this study at your offices with the social workers. Hope that you will take my request into consideration.

Yours sincerely,

Rendani Rembuluwani

Email: rrembuluwani@gmail.com

Cell: 0768248277

Appendix 8

An exploration of the exit plans of the beneficiaries of the foster care grant in Soweto

Participant Information sheet(Key informants)

Good day

My name is Rendani Rembuluwani. I am a registered postgraduate student on the Masters in Social Development at the University of the Witwatersrand. As part of the requirements for the degree, I am conducting research into the exit plans of foster parents who are receiving the Foster Care Grant. It is hoped that the study will help sensitise both foster parents and social workers on the need to put in place exit plans for the long term support of foster parents and their families.

I therefore wish to invite you to participate in my study. Your participation is entirely voluntary and refusal to participate will not be held against you in any way. If you agree to take part in the study, I shall arrange to interview you at a time and place that is suitable for you so it does not disrupt your work schedule. You may withdraw from the study at any time and you may also refuse to answer any questions that you feel uncomfortable with answering. Please note that the estimated time that the interview session might take is about an hour. The interviewer is also willing and able to conduct the interview in your preferred language of choice.

With your permission, the interview will be tape-recorded. No other than me and my supervisor will have access to the tapes. The tapes and interview schedules will be kept for two years following any publication or for six years if no publications emanate from the study. The tapes will be stored in a safe where no one except me and my supervisor will be able to access them. Please be assured that your name and other personal details will be kept confidential and no identifying information will be included in the final research report. I will provide every participant with a pseudonym (false name) to protect your identity. This will be done because you may not want to be identified due to the sensitive nature of this study. The results of the research will be reported in the form of a research report that will be stored in the main library as well as the research website. This report will be available to anyone who wishes to view it.

Please feel welcome to ask any questions regarding the study. I shall answer them to the best of my ability. You may contact me on 0768248277. My supervisors name is Professor E. Kaseke and his telephone number is 011 7174472 .Should you wish to receive a summary of the results of the study; an abstract will be made available on request. Thank you for taking time to consider participating in the study.

Regards,

Rendani Rembuluwani (Masters Student)

Appendix 9

INTERVIEW SCHEDULE FOR KEY INFORMANTS

Research topic: An exploration of the exit plans of foster parents who are receiving the Foster Care Grant

Part A

Introductions:

Greetings and explaining the issues of confidentiality and consent.

Identifying information of participant

*Name: not compulsory

Age:

Gender:

Race:

Years of experience in foster care:

Part B

1. Please provide a general idea of the foster care grant and what it serves to do
2. What are the objectives and rationale of the foster care grant?
3. Who is eligible for the grant and how is it means tested?
4. How is the grant allocated and for how long?
5. Based on your work experience, how effective do you think the foster care grant is as a social assistance programme?
6. Do you see the foster care grant as a sustainable strategy for reducing poverty? Explain.
7. What is the rationale behind having an exit plan?
8. At what age does the grant get terminated and why?
9. Are there exit strategies put in place by foster parents in terms of the mandate of social development?
10. What are the challenges faced by the recipients of the foster care grant in coming up with exit plans?

Appendix 10

INTERVIEW SCHEDULE FOR PARTICIPANTS

Research topic: An exploration of the exit plans of foster parents who are receiving the Foster Care Grant

Part A

Introductions:

Greetings and explaining the issues of confidentiality and consent.

Identifying information of participant

*Name: not compulsory

Age:

Gender:

Race:

Years of experience in foster care:

Part B

1. Please provide an overview about the foster care grant and its purpose
2. How where you means tested for the grant?
3. How long have you received the grant for?
4. When is the grant going to be terminated?
5. What do you understand by an exit plan and the purpose it serves?
6. Do you have a plan for exiting the foster care grant system?
7. What are the challenges that you are facings in terms of supporting yourself and the child/ren under your care?
8. Do you have alternative arrangements made by for the long -term support of the child/ren under your care?
9. What are the challenges that you are facing in terms of coming up with an exit plan?

Appendix 11

Transcript 1

INTERVIEW SCHEDULE FOR PARTICIPANTS

Research topic: An exploration of the exit plans of foster parents who are receiving the Foster Care Grant

Date: 15/01/2014

Part A

Introductions:

Greetings and explaining the issues of confidentiality and consent.

Identifying information of participant

*Name: Thobile

Age: 33

Gender: Female

Race: Black

Years of experience in foster care: 7 years

Part B

1. Please provide an overview about the foster care grant and its purpose
Its money that helps children in need of parents and helps me bring up these children because I am not financially okay, the child has to go to school, be fed and get clothed so that is what the grant helps me with.
2. How where you means tested for the grant?
The checked that the mother of the child was deceased and what kind of a home we have (home circumstances), yeah that's about it.
3. How long have you received the grant for?
7 Years.
4. When is the grant going to be terminated?
The grant will be terminated in three yearsøtime when the child is 18.
5. What do you understand by an exit plan and the purpose it serves?
They told me that when the child is 18 the grant will be terminated unless if the child is still at school going age then it will go on until the child is done with school
6. Do you have a plan for exiting the foster care grant system?
No, at the moment I don't have a plan to exit the grant because I don't have a good job, I have the grant till the child finishes matric but apart from that I don't have a plan proceeding that

7. What are the challenges that you are facing in terms of supporting yourself and the child/ren under your care?

It's hard to raise a foster child because at times you feel overwhelmed because the child needs someone to call mom and who can be there for them more than I can even though I am trying my best they still need that. Financially it's very hard and I can say that the foster care grant is really helping me a lot to raise the children

8. Do you have alternative arrangements made by for the long -term support of the child/ren under your care?

If it still continues then I don't have a problem with carrying on in terms of taking care of the child but then again if it stops then I don't know what I will do because I can't raise a child without money and I myself don't have the means. So I don't have a back-up plan

9. What are the challenges that you are facing in terms of coming up with an exit plan?

If I can get a better job yeah, because now I work for about two weeks a month and it does not provide much for me, so if I get a better job then I can do a better job of taking care of the child. I am really trying my best to find a better job but it's hard given my age at the moment.

Last comments:

I wish they can add some more money until at least the child is 21, because by then the child will be able to take better care of themselves and have completed school. The child might even be self-sustaining by that time. Because right now things are difficult.

Transcript 2

INTERVIEW SCHEDULE FOR PARTICIPANTS

Research topic: An exploration of the exit plans of foster parents who are receiving the Foster Care Grant

Part A

Introductions:

Greetings and explaining the issues of confidentiality and consent.

Date: 15/01/2014

Identifying information of participant

*Name: Easter

Age: 67

Gender: Female

Race: African

Years of experience in foster care: they first gave me the run around because I did not have the mothers death certificate. I received the grant when the child was six and now the child is thirteen (7 years experience).

Part B

1. Please provide an overview about the foster care grant and its purpose
It's for buying the child food and clothing. It's not like the first one, the R260 that was for the child support grant. After the child's father passed on I then complained and then they gave me the R800. The money is so that it can help us because we don't have money and I can't do everything just on my grant.
2. How where you means tested for the grant?
I went and applied on various occasions and I didn't have the mother's death certificate. They also came home and looked at where I stayed.
3. How long have you received the grant for?
7 years
4. When is the grant going to be terminated?
When the child is 18 or if the child decides that they do not want to continue with schooling any more. We also had to go back to court to have them renew the grant again for the next term.
5. What do you understand by an exit plan and the purpose it serves?
I have never heard of it.
6. Do you have a plan for exiting the foster care grant system?

I don't have a plan; I can't do it on my own because I won't cope.

7. What are the challenges that you are facing in terms of supporting yourself and the child/ren under your care?

I don't have any at the moment because we have the money now and when the money comes in I ask the child what they need then I get them that and the child is also grown now. We also use the money to buy food and toiletries and all the other things.

8. Do you have alternative arrangements made by for the long -term support of the child/ren under your care?

I don't have a plan because I got hurt so I can't work because my knee is hurt and I am very old. I am also trying to think of other means to make money.

9. What are the challenges that you are facing in terms of coming up with an exit plan?

The challenge is that I am unable to work and rely on the grant to help.

Transcript 3

INTERVIEW SCHEDULE FOR PARTICIPANTS

Research topic: An exploration of the exit plans of foster parents who are receiving the Foster Care Grant

Date: 16 /01/2014

Part A

Introductions:

Greetings and explaining the issues of confidentiality and consent.

Identifying information of participant

*Name: Daphne

Age: 78

Gender: Female

Race: African

Years of experience in foster care: 13 yearsøexperience

Part B

1. Please provide an overview about the foster care grant and its purpose
It helps me pay for the rent as I am the bread winner at the house, so I buy food and pay for the society (stockfell).
2. How where you means tested for the grant?
The child came when he was seven days and they gave me the child to take care of him till this day. I did not apply they just gave me the child, I am not even a relative of the child but they gave him to me.
3. How long have you received the grant for?
13 years
4. When is the grant going to be terminated?
It goes till the age of 18.
5. What do you understand by an exit plan and the purpose it serves?
I donø know about that.
6. Do you have a plan for exiting the foster care grant system?
The child will be mine by then and the child only knows me as his mother, even my family take him as my child and Iøll take care of him when we reach that point. I will support him with my pension fund.

7. What are the challenges that you are facings in terms of supporting yourself and the child/ren under your care?
I came to a realisation that the child was mentally ill so I had to take him to treatment to psychologists and they cost me money

8. Do you have alternative arrangements made by for the long -term support of the child/ren under your care?
IØl use my pension fund to support him and we will eat that money

9. What are the challenges that you are facing in terms of coming up with an exit plan?
Either than my own grant I donØt have other issues. Everything wants money and without that money I canØt do anything.

Transcript 4

INTERVIEW SCHEDULE FOR PARTICIPANTS

Research topic: An exploration of the exit plans of foster parents who are receiving the Foster Care Grant

Part A

Introductions:

Greetings and explaining the issues of confidentiality and consent.

Date: 21/01/2014

Identifying information of participant

*Name: anonymous

Age: 40

Gender: Female

Race: African

Years of experience in foster care: 2 yearsøexperience

Part B

1. Please provide an overview about the foster care grant and its purpose
The money is to support the child to meet the child's basic needs. The grant is for those without parents and also those whose parents don't want them anymore.
2. How were you means tested for the grant?
They looked at my income so that they can see that I'm not just doing this to make an income out of the foster care grant system. They also looked at where I stayed and if the environment is conducive enough for the kids to grow up in.
3. How long have you received the grant for?
2 years
4. When is the grant going to be terminated?
After two years because I have to renew it every two years. The way that the foster care grant system works now is that they give you two years and you have to go there after every two years and attend court and have it renewed. If the parents have not yet found the right place to stay or have a stable income then they extend your contract for two years.
5. What do you understand by an exit plan and the purpose it serves?
No I have not heard of it
6. Do you have a plan for exiting the foster care grant system?

I will just support the child with what I have and the child will eat what I eat as well, that's the best that I can do.

7. What are the challenges that you are facing in terms of supporting yourself and the child/ren under your care?

The money is little because R800 is nothing when it comes to raising a child and it's as if the money is there to fill what u already have as you can't survive on it alone. It meets me only halfway but it's really small, kids are expensive they get sick, they need food, school things, transport.

8. Do you have alternative arrangements made by for the long -term support of the child/ren under your care?

I'm not dependent on the foster care grant because they don't give you a child to foster unless if you have a stable income set in place. I have a tuck shop and rooms that people rent out. My husband also works.

9. What are the challenges that you are facing in terms of coming up with an exit plan?

I save R50 for each of them in a monthly basis so hopefully it will be enough to further care for them in the future.

Transcript 5

INTERVIEW SCHEDULE FOR PARTICIPANTS

Research topic: An exploration of the exit plans of foster parents who are receiving the Foster Care Grant

Date: 21/01/2014

Part A

Introductions:

Greetings and explaining the issues of confidentiality and consent.

Identifying information of participant

*Name: Dorothy

Age: 74

Gender: Female

Race: African

Years of experience in foster care: almost four years

Part B

1. Please provide an overview about the foster care grant and its purpose
The grant is to take care of orphans who have no parents
2. How where you means tested for the grant?
They wanted my Id and the child's birth certificate
3. How long have you received the grant for?
Four years.
4. When is the grant going to be terminated?
When the child reaches 18, is what.
5. What do you understand by an exit plan and the purpose it serves?
I never heard of it.
6. Do you have a plan for exiting the foster care grant system?
By the time he gets to 18 he will still be in school and ill support him with my own pension fund.
7. What are the challenges that you are facings in terms of supporting yourself and the child/ren under your care?
My challenges include paying for transport, clothing, food, and this is because the money is too little to support the child.

8. Do you have alternative arrangements made by for the long -term support of the child/ren under your care?

I don't have a plan.

9. What are the challenges that you are facing in terms of coming up with an exit plan?

I don't know because some things are just unexplainable, because I am just looking at the future of the child and hoping for the best because I have not been put as a legal parent of the child.

Transcript 6

INTERVIEW SCHEDULE FOR PARTICIPANTS

Research topic: An exploration of the exit plans of foster parents who are receiving the Foster Care Grant

Date: 22/01/2014

Part A

Introductions:

Greetings and explaining the issues of confidentiality and consent.

Identifying information of participant

*Name: Precious

Age: 35

Gender: Female

Race: African

Years of experience in foster care: 2 years

Part B

1. Please provide an overview about the foster care grant and its purpose
It's about giving external support to children who are fostered and the purpose of the grant is to provide for the basic needs of the child such as food, clothing, school and everything
2. How where you means tested for the grant?
They checked my income, where I stay if it's safe and healthy environment. They also looked at my age and if the child act allows for me to be taking care of the child.
3. How long have you received the grant for?
2 years now.
4. When is the grant going to be terminated?
It's going to be terminated in November because the court order. The mother is there but does not have custody of the child
5. What do you understand by an exit plan and the purpose it serves?
I think it's the time or the minimum of the time that the grant will be terminated on.
6. Do you have a plan for exiting the foster care grant system?
I do have a plan because I do have a savings account where I save for the children on, because I foster two kids.

7. What are the challenges that you are facing in terms of supporting yourself and the child/ren under your care?

The challenges that I am faced with is that the money is too little; I pay for transport, the day care and after care since I work very late. I also have to make sure that the children eat. But the children also get sick and now one of the children has asthma and I have to pay for the treatment and look after them. I also have to pay the lady that babysits for me when I am not around so I have to pay for her as well. So really the money is not enough to take care of the children.

8. Do you have alternative arrangements made by for the long -term support of the child/ren under your care?

Yes I invested in a trust fund for the children in care I have to exit the grant.

9. What are the challenges that you are facing in terms of coming up with an exit plan?

No I don't have any challenges if I exit I can cum up with a plan.

Transcript 7

INTERVIEW SCHEDULE FOR PARTICIPANTS

Research topic: An exploration of the exit plans of foster parents who are receiving the Foster Care Grant

Date: 22/01/2014

Part A

Introductions:

Greetings and explaining the issues of confidentiality and consent.

Identifying information of participant

*Name: Oratile

Age: 32

Gender: Female

Race: African

Years of experience in foster care: 5 yearsøexperience

Part B

1. Please provide an overview about the foster care grant and its purpose
This foster care thing I grew up not knowing so I only found out about it when my sister passed away. So I had to take care of her children so when I went to SASSA they then told me about it and advise that I register since the children donø have parents any more. The grant would then help me provide for the children.
2. How where you means tested for the grant?
They did a background check on the kind of person I am and how I conduct myself. They also did a home check to see where I stay with. They also talked to my neighbours to ask them about me. They also looked at whether or not the area I stay in is productive for the children to grow up in.
3. How long have you received the grant for?
5 years
4. When is the grant going to be terminated?

The grant will be terminated when the children are 18

5. What do you understand by an exit plan and the purpose it serves?

I heard a little about it and I was not even sure about it or what it's about. The way I understood it was that if the money no longer comes in for the children then I have to have a back-up plan about how I will help them so that they can continue with school and get dressed and stuff

6. Do you have a plan for exiting the foster care grant system?

For now I can say that I don't have a plan as the children are still young and I'm still dependent on this money. I'll see what I can cum up with as time goes on.

7. What are the challenges that you are facing in terms of supporting yourself and the child/ren under your care?

The problem is that I work but where I work I get paid very little and when I put it together with the grant, the money is still very little. Food prices are at a peak and it means that the money I have is the kind of money that does not stick around because it comes and goes just like that. Children don't have food, others its socks and others are this and that. When the child is sick I have to be the one that goes out to buy medication.

8. Do you have alternative arrangements made by for the long -term support of the child/ren under your care?

No I don't have any

9. What are the challenges that you are facing in terms of coming up with an exit plan?

I can say that thing that bothers me a lot is that the money is little and even if I say I want to budget for the children still the money is little. I have tried to save the money but I went back again and ate it because there was no money for food so that's my challenge.

Transcript 8

INTERVIEW SCHEDULE FOR PARTICIPANTS

Research topic: An exploration of the exit plans of foster parents who are receiving the Foster Care Grant

Date: 23/01/2014

Part A

Introductions:

Greetings and explaining the issues of confidentiality and consent.

Identifying information of participant

*Name: Koketso Smith

Age: 26

Gender: Female

Race: Black

Years of experience in foster care: 7years

Part B

1. Please provide an overview about the foster care grant and its purpose
The grant is to support us people who can't support themselves to help us take care of children and feed them, make sure they attend school and are dressed. So its for people that don't work
2. How where you means tested for the grant?
They checked if I have a valid South African ID and where I stay and if I can take care of the children. They also checked if I work or not
3. How long have you received the grant for?
7 years
4. When is the grant going to be terminated?
When the child is 18 or until the child completes school
5. What do you understand by an exit plan and the purpose it serves?
I don't know what that is.
6. Do you have a plan for exiting the foster care grant system?
I don't have one because I don't have a job.
7. What are the challenges that you are facings in terms of supporting yourself and the child/ren under your care?
The money is too little and children are expensive. They eat the whole month and they have to have lunch money, get dressed, school fees, and all.

8. Do you have alternative arrangements made by for the long -term support of the child/ren under your care?

No I don't have one.

9. What are the challenges that you are facing in terms of coming up with an exit plan?

When they have to eat it's a problem and I can't provide for all their needs and on the other side I don't even have money to support myself and make myself happy. All the money I get I have to add to get them what they need on a daily basis.

Transcript 9

INTERVIEW SCHEDULE FOR PARTICIPANTS

Research topic: An exploration of the exit plans of foster parents who are receiving the Foster Care Grant

Date: 23/01/2014

Part A

Introductions:

Greetings and explaining the issues of confidentiality and consent.

Identifying information of participant

*Name: Duduzile

Age: 35

Gender: Female

Race: African

Years of experience in foster care: 12years

Part B

1. Please provide an overview about the foster care grant and its purpose
The way I got it was that the child's mother died and when I went to apply for the social grant they told me that I should apply for the foster care so that's how I got it. It is for children who don't have parents
2. How were you means tested for the grant?
They want to know where I stay and if I reside with the child and they also wanted to prove that I do indeed stay with the child. They also wanted to know proof that indeed the child's parents passed away. They also checked that I don't work and that I don't have any other money left over.
3. How long have you received the grant for?
12 years in all.
4. When is the grant going to be terminated?
For now the child is about to turn 18 so it's going to be cut either way soon.

5. What do you understand by an exit plan and the purpose it serves?
I have never heard of it before so its news to me.
6. Do you have a plan for exiting the foster care grant system?
No.
7. What are the challenges that you are facings in terms of supporting yourself and the child/ren under your care?
Yoh! Itø hard because this money is like it helps you here and there but doesnø do any justice as itø the only income we have that provides us with food, school fees, books, clothing. So itø not enough.
8. Do you have alternative arrangements made by for the long -term support of the child/ren under your care?
No not all, till this day Iø still thinking to myself what is going to happen when they terminate it.
9. What are the challenges that you are facing in terms of coming up with an exit plan?
I am just praying hey, I pray that the child passes at school and thus receives a bursary to further her education. And Iø just praying to God

Transcript 10

INTERVIEW SCHEDULE FOR PARTICIPANTS

Research topic: An exploration of the exit plans of foster parents who are receiving the Foster Care Grant

Date: 23/01/2014

Part A

Introductions:

Greetings and explaining the issues of confidentiality and consent.

Identifying information of participant

*Name: Gugu Maseko

Age: 28

Gender: Female

Race: African

Years of experience in foster care: 6years

Part B

1. Please provide an overview about the foster care grant and its purpose
Foster care is for poor people and people who have no parents.
2. How where you means tested for the grant?
They first checked my ID and then they also came home to check where I stay. They also looked at if there father of the child is still alive. The child I am raising is my sister's child.
3. How long have you received the grant for?
6 years.
4. When is the grant going to be terminated?
When the child is 18 but for now my sister's child is 9 years
5. What do you understand by an exit plan and the purpose it serves?

Hai, I've never been told about such a thing such as an exit plan.

6. Do you have a plan for exiting the foster care grant system?

No I don't have one at the moment.

7. What are the challenges that you are facing in terms of supporting yourself and the child/ren under your care?

It's very hard because all in all I have three children of which two are my own so the money is not enough. These kids are also very expensive because they are under the age of 10 and their things are very expensive because they are all boys.

8. Do you have alternative arrangements made by for the long-term support of the child/ren under your care?

No I don't have. Maybe if I can get a job then I'd be able to save for them but right now no.

9. What are the challenges that you are facing in terms of coming up with an exit plan?

I don't have a job, I'm single, I'm paying for rent, food, and I also have needs so it's very hard.

Transcript 11

INTERVIEW SCHEDULE FOR KEY INFORMANTS

Research topic: An exploration of the exit plans of foster parents who are receiving the Foster Care Grant

Part A

Introductions:

Greetings and explaining the issues of confidentiality and consent.

Identifying information of participant

*Name: Msizi Phungwayo

Age: 27

Gender: Male

Race: Black

Years of experience in foster care: 4years

Part B

1. Please provide a general idea of the foster care grant and what it serves to do.

RESPONSE: To my understanding the foster care grant is a social assistance programme that was instituted to alleviate poverty and through improving income in poor people's houses and so what it serves to do is to assist children in order to meet their basic needs and so that they can be able to go to school and afford uniform

2. What are the objectives and rationale of the foster care grant?

RESPONSE: I am not sure about the objectives but I think it links to elevating poverty and I guess it is in line with the objective of social development whose major objective is to alleviate poverty through improving their income that is why foster parents receive the grant. As for the rationale I don't know

3. Who is eligible for the grant and how is it means tested?

RESPONSE: people who receive the foster care grant firstly they should be living with the child, the child's biological parents should be deceased or at least one of the parents and the other one should be unknown in terms of the whereabouts or who they are. In terms of the means test the foster parents regardless of whether they have enough income in the home

they are still eligible to receive the grant just as long as the child is not provided for the child or are not there and have no means for the child

4. How is the grant allocated and for how long?

RESPONSE: Initially the grant is allocated when the first court order comes out and it for two years and then it is renewed after two years. As I am saying it allocated in terms of sec 150 of the children's act which is finding the child in need of care and protection and then the children's court grants the two year court order and after two years you go back and renew the court order and they check the living conditions of the child then the presiding officer then extends the court order sometimes for two years and sometimes for five years or one years, based on this they then also monitor the reports in terms of sections 65 of the children's act and sometimes its extended till the child is 18 years of age. After the child is 18 and still in school then the grant can get extended through the social workers motivation and it is then extended till the child is 21 years old if the child is still in school then it gets cut off.

5. Based on your work experience, how effective do you think the foster care grant is as a social assistance programme?

RESPONSE: I think it is very effective I think there is evidence of change in the families' households in terms of meeting the children's basic needs in terms of food, clothing and school utilities. In terms of the social development approach it is said that the grant system is the most effective system in terms of making a dent towards alleviating poverty.

6. Do you see the foster care grant as a sustainable strategy for reducing poverty? Explain.

RESPONSE: yes, it is but I think the problem is that it's standing alone and it should be coupled with other measures of capacity building for these different families because the rate of the unemployment in south Africa. The foster care grant should ideally be used to only meet the child's needs and not to carry the families through which is the sort of the disjuncture right now because the foster care grant is used to carry families though because of their poverty situation, not only to meet the children's needs. Capacity building should be instituted so that those family members that can work or require skill can also contribute so the foster care money can be used for the child and not the family.

7. What is the rationale behind having an exit plan?

RESPONSE: It's a control measure which is supposed to help with the budgetary implications on the part of the government because not everyone can receive foster care or the other grant because it was not meant for everyone. So in terms of the criteria there should be an exit plan because people cannot be completely reliant on the grant. So I think most importantly it's to cut the dependency.

8. At what age does the grant get terminated and why?

RESPONSE: As it stands right now the foster care grant can be terminated at 21 years of age, because according to the new case law the and sassa they have extended the period for children, previously children that were in tertiary they were not counted even if you were 19 the grant does not cover you but since last year September it was communicated that now from that period if the child is in tertiary and there is confirmation or proof of registration you can extend the grant until the child turns 21. So 21 is the time when you can terminate services. As for termination that happens in between the age of 21 is circumstantial, it depends on what is happening.

9. Are there exit strategies put in place by foster parents in terms of the mandate of social development?

RESPONSE: No. I don't know of any.

10. What are the challenges faced by the recipients of the foster care grant in coming up with exit plans?

RESPONSE: I think as I said, because the issue of foster care is there to, it's a mechanism that is there to reduce child poverty to help meet the basic needs of the child. With the issue of the parents, they need capacity building, if they cannot find employment, if they cannot be able to provide for themselves not the child but themselves I think that's one which leads them to be dependent on the grant. The grant is no longer there to attend to the child's needs but now it's attending to the foster parents' poverty so I think that's the challenge. The dependency that is caused by these circumstances of poverty and lack of employment and also ill health, so they come dependent and as a result they become unable to envision even coming up with exiting the grant. It's almost when the child reaches 21 you're forced to exit but if it was up to them they would continue receiving the foster care. This highlights the

importance of having an exit strategy so that you don't have a situation where people become completely dependent and go on and go on without being self-sufficient.

Transcript 12

INTERVIEW SCHEDULE FOR KEY INFORMANTS

Research topic: An exploration of the exit plans of foster parents who are receiving the Foster Care Grant

Date: 10/02/14

Part A

Introductions:

Greetings and explaining the issues of confidentiality and consent.

Identifying information of participant

*Name: Phumzile

Age: 26

Gender: Female Race: African

Years of experience in foster care: 1 year

Part B

1. Please provide a general idea of the foster care grant and what it serves to do.

RESPONSE: The foster care grant is provided to help children that are in need of care and protection. What it serves to do is to alleviate poverty and to help the children in need of care and protection.

2. What are the objectives and rationale of the foster care grant?

RESPONSE: The objective of the foster care grant is to alleviate poverty especially the children that lost their parents and mostly the neglected children so that they can get a better life. The foster care grant helps the children in terms of food, uniform or whatever they will need so it helps for things like that.

3. Who is eligible for the grant and how is it means tested?

RESPONSE: the applicant usually is the foster parent. We do means test by, we first assess the home circumstances and then we conduct an interview with the applicant who is the prospective foster parent and the child. And then we do assessment we, speak to the neighbours as well to get more information, and people that know the foster parent and the child to do our means test.

4. *How is the grant allocated and for how long?*

RESPONSE: The grant is usually allocated for two years and we do our assessment and our reports and then recommend to the magistrate and once the grant is approved by court then its allocated to them for two years then the social worker supervision is implemented, we usually supervise using the grant according to what they should be using the grant for. After two years we go and assess again the situation and we determine if the extension is still needed and if not then some alternative placement or removal will be done.

5. *Based on your work experience, how effective do you think the foster care grant is as a social assistance programme?*

RESPONSE: I think it is very effective because in the communities we work with a lot of orphans are prevalent because a lot of things happen that put the children at risk and I think its very effective because it changes their lives in terms of some children were lacking food and school uniform things like that but with this foster care they are able to meet their needs.

6. *Do you see the foster care grant as a sustainable strategy for reducing poverty? Explain.*

RESPONSE: Yes I think it is a suitable strategy to reduce poverty because it makes a difference, because you know when you assess before you can take a case to court its better you check the home circumstances so that you can receive the foster care grant. We go and continue supervision services to see how they use the money and you can see that its really making a difference in the childrens life.

7. *What is the rationale behind having an exit plan?*

RESPONSE: ok, the reason is making sure that after the child is out of the system they will be able to have a better life, working with the client maybe with the future plan of their life maybe what they want, so that they will not go back to the situation they were in before they received the grant, especially those that are going out the system and things like that.

8. *At what age does the grant get terminated and why?*

RESPONSE: Usually the grant is terminated at the age of 18 at court while they are still in school and then we extend at canalisation until the age of 21.

9. *Are there exit strategies put in place by foster parents in terms of the mandate of social development?*

RESPONSE: some are able to especially the children that are in direction (some they will tell you that the child is in university and stuff) some are not especially those that are involved in substance abuse some of them are not able to. But the majority are able to because when we check we find that even thou they were not in university but they were able to get jobs.

10. *What are the challenges faced by the recipients of the foster care grant in coming up with exit plans?*

RESPONSE: The challenge is that some of them have become dependent on the foster care grant and when it comes to termination it becomes difficult for them to come to terms with the termination.

Transcript 13

INTERVIEW SCHEDULE FOR KEY INFORMANTS

Research topic: An exploration of the exit plans of foster parents who are receiving the Foster Care Grant

Date: 10/02/14

Part A

Introductions:

Greetings and explaining the issues of confidentiality and consent.

Identifying information of participant

*Name: Adelaide

Age: 30

Gender: Female

Race: African

Years of experience in foster care: 5 years

Part B

1. Please provide a general idea of the foster care grant and what it serves to do

RESPONSE: you know the foster care grant is meant to alleviate poverty but now as we look it promotes dependency people are no longer doing it for its purpose but rather for the benefit of the money.

2. What are the objectives and rationale of the foster care grant?

RESPONSE: the main objective is to alleviate poverty and to provide children with a safe and secure environment to thrive in and also to secure those homes or placements.

3. Who is eligible for the grant and how is it means tested?

RESPONSE: I think any child who is an orphan is eligible for the grant but now we are not able to means test for the grant so anyone can apply for the grant as we no longer look at who needs it and who does not, because now people have a tendency that even if the child has got a father they have a tendency of saying we don't know the father and then they don't know the consequences of denying the child a relationship with their fathers for the sake of money. So right now we don't know who is eligible or not.

4. How is the grant allocated and for how long?

RESPONSE: first the social worker must do an investigation to check if the person who has applied for the grant is suitable to care for the child then from there we go to church to finalise the matter then after that the client must go to SASSA to apply for grant. This grant is allocated for until the child turns 18. It depends if the child is still in school or not. If the child is still in school then it can get extended till the age of 21 but the social worker must motivate why the child must get the money after 18 years.

5. Based on your work experience, how effective do you think the foster care grant is as a social assistance programme?

RESPONSE: For me it's not that effective as it was meant to alleviate poverty and not create dependency. I think the way it was allocated it was meant well but the way the people have internalised it they think that with the grant everything is fine. For that period when the grant is there it's fine but what about when it ends? So that's the problem that we are facing now.

6. Do you see the foster care grant as a sustainable strategy for reducing poverty? Explain.

RESPONSE: I don't think so; I think our department must come up with other measures, if we can use this money to equip people with skills especially the foster parents. I believe that for someone to receive the foster care grant someone must have died in the family and you find that they never went for bereavement counselling and they don't even have parenting skills and now they get this grant for the sake of getting it but they are not equip to be parents and they are not even able to plan ahead for these kids to get a better future so if maybe government can come up with a programme to teach them how to be better parents and give them skills to utilise this grant to plan for the future for instance when the child is done with matric they can further their education. We need programmes like that.

7. What is the rationale behind having an exit plan?

RESPONSE: with foster parents for them it's not have exit plans but from our side it's a crucial issue because the main purpose is to empower them and see them get somewhere so if we don't have exit plans then it's heart breaking because what's going to happen when the child turns 18? The very same child will get involved in social ills and against the law and we want to see them get somewhere so exit plans are very important but for foster parents they don't see them as important.

8. *At what age does the grant get terminated and why?*

RESPONSE: when the child turns 18 or any age when the child drops out of school so basically it's about school.

9. *Are there exit strategies put in place by foster parents in terms of the mandate of social development?*

RESPONSE: No

10. *What are the challenges faced by the recipients of the foster care grant in coming up with exit plans?*

RESPONSE: they don't have knowledge and they don't have skills. Their parents but lack better skills that's why they don't even think about what's going to happen to this child after 18 all they care about is daily needs, if they have food in the house and goes to school but they don't think about exit plans.

Transcript 14

INTERVIEW SCHEDULE FOR KEY INFORMANTS

Research topic: An exploration of the exit plans of foster parents who are receiving the Foster Care Grant

Part A

Introductions:

Greetings and explaining the issues of confidentiality and consent.

Identifying information of participant

*Name: Lungiswa

Age:

Gender: Female Race: African

Years of experience in foster care: 14 years

Part B

1. Please provide a general idea of the foster care grant and what it serves to do

RESPONSE: the foster care grant was meant for orphaned children who no longer have parents alive. It was really for those children catered for in the children's act of 2008 under section 150 as a child who is in need of care and protection. This also includes abandoned children as well.

2. What are the objectives and rationale of the foster care grant?

RESPONSE: The main objective is to assist families who are in need of support while raising a child whose parents are no longer there. It is also to help reduce poverty so that there is income in the house hold and that they are able to cater for their basic needs and that is the main reason.

3. Who is eligible for the grant and how is it means tested?

RESPONSE: Orphaned children who are vulnerable and are in need of care and support. The way it is means tested is that we tend to investigate the home circumstances of these families and also find out if the person is able to care for the child or not but nower days there is no set criteria for being eligible as long as you apply and you're staying with the child then you qualify.

4. *How is the grant allocated and for how long?*

RESPONSE: it is allocated in court in terms of section 150 and 156. And the grant goes on till the child completes their matric or at 18 years of age. It can be extended till 21 only if the child is still in school.

5. *Based on your work experience, how effective do you think the foster care grant is as a social assistance programme?*

RESPONSE: I don't think that it is effective at all because it further creates dependency among these people and it is seen as financial assistance more than anything else. And the grant on it is not enough.

6. *Do you see the foster care grant as a sustainable strategy for reducing poverty? Explain.*

RESPONSE: No. Most families rely heavily on the grant and they don't have any other form of income in the household in terms of money so like I said it just further recreates poverty and dependency.

7. *What is the rationale behind having an exit plan?*

RESPONSE: the main reason is so that when the child is no longer eligible for the grant then the family should be able to sustain themselves, even before the grant is terminated they should at least be able to sustain themselves. But that is not happening in the real world because they are dependent and are not self-sustaining.

8. *At what age does the grant get terminated and why?*

RESPONSE: At 21 but it can get terminated at any time should the child be not going to school or decides they want to drop out of school then the grant gets cut.

9. *Are there exit strategies put in place by foster parents in terms of the mandate of social development?*

RESPONSE: there is none that is put in the moment, these people can't even save or think of saving but the department has no expectations whatsoever.

10. *What are the challenges faced by the recipients of the foster care grant in coming up with exit plans?*

RESPONSE: unemployment is a huge challenge because if they don't have jobs then it means that the money they get has to support the child and the family and they are then forced to rely on the money for their daily needs instead. Another challenge is that you find that there are other children in the family who also need to get taken care of and don't have the grant like the one in foster care. So it useless to come up with a plan because you are using the money from hand to mouth and that is all that you think about.