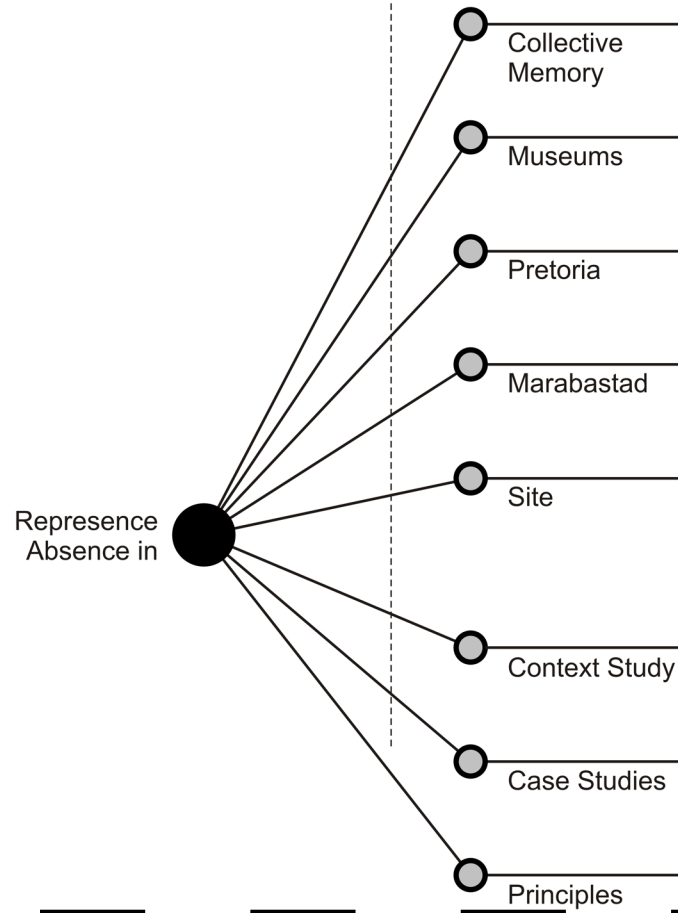


Premise

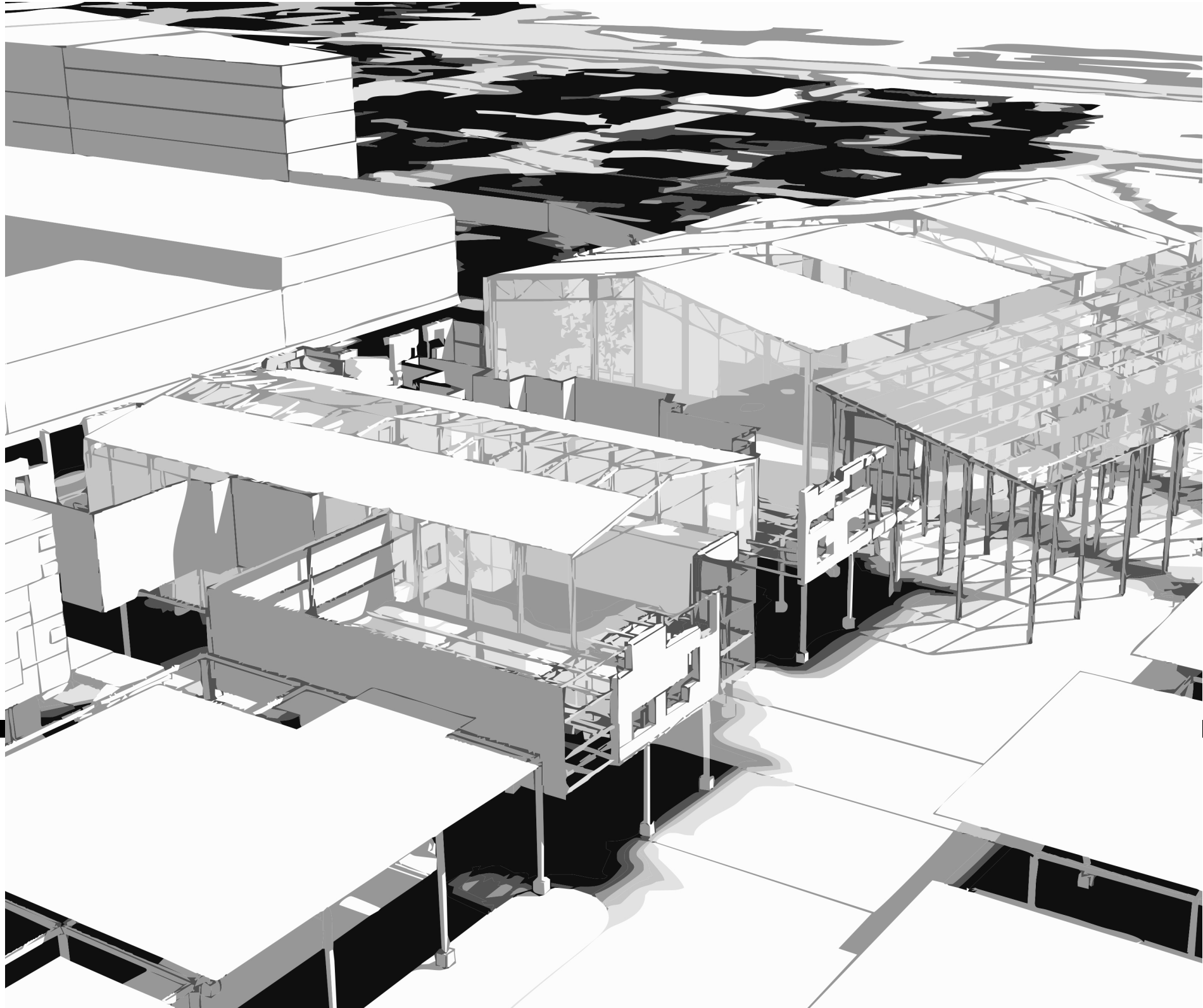
Sections



This diagram shows the different chapters that precede the design. This diagram will develop in the later stages of the document.



INTRODUCTION



Preface

“On a deep psychological level, our **architecture is built memory**, it is a legacy, both acclaimed architecture and anonymous building. **When we remove any part of it, we erase part of that memory**, performing an incremental cultural lobotomy.”
Roth 1993: 136

Architecture is built memory, when we remove any part, we erase memory...

Introduction

This thesis is an investigation which explores South Africa's history of erasing histories and its consequences on the urban landscape. If we are to believe Rossi's hypothesis that our cities are inherently linked to our collective memory, then what happens to these memories when layers of cities have been removed and destroyed? More specifically what are the spatial implications on these eroded landscapes?

This thesis focuses on histories of erased South African urban landscapes. It focuses specifically on Pretoria, the symbolic seat of power and its uncomfortable relationship with the township of Marabastad, located on the north west outskirts of the inner city. Apartheid planning policies only continued and formalised what was already a history of separation, destruction and erosion in Marabastad.

The resulting landscape is one marked with historical and physical voids. Marabastad's missing histories now manifest themselves in an urban fabric of vacancies which highlight the impact of apartheid's oppressive urban policies.

This thesis takes a view that there is an opportunity for architecture to work within these vacancies and historical absences. By working within these voids, this thesis seeks to represent these historical absences and create a more humane and dignified urban landscape for the people of Marabastad.

