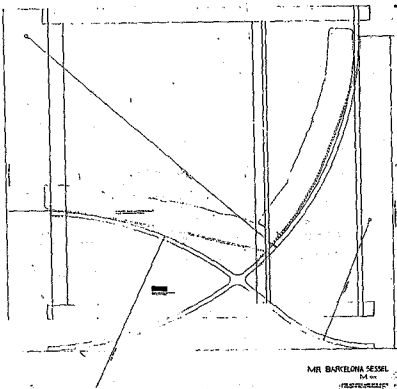


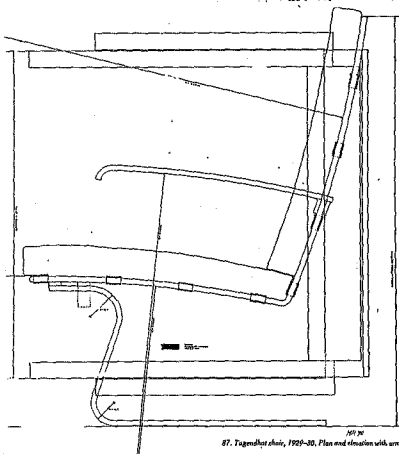
*The blind spaces relied on exotic and opulent furnishings and fabrics to give the interiors the desired 'class'. Expensive and opulent finishes are still considered a sine-qua-non for good design by many architects.*

fig: 18.



relaxo chair, 1927. Plan and elevation.

MR. BARCELONA SESSEL  
14 cm



87. Tugendhat chair, 1929-30. Plan and elevation with arms.

*Every architect has had to design chairs as a badge of affiliation. Mies's chairs reveal a love of a 'machine image' rather than the 'mechanical perfection, honesty and minimalism' etc., that was to perplex his alien critics. They have strong visual appeal that caught the public fancy 30 years later.*

fig: 19.



Looking at this picture

you can see

just by the way

they are smiling

and they are

very happy

and they are

very much

in love

and they are

very much

in love

and they are

very much

in love

and they are

very much

in love

and they are

very much

in love

and they are

very much

in love

and they are

very much

in love

and they are

very much

in love

and they are

very much

in love

and they are

very much

in love

and they are

very much

in love

and they are

very much

in love

and they are

very much

in love

and they are

very much

in love

and they are

very much

in love

and they are

very much

in love

and they are

very much

in love

and they are

very much

in love

and they are

very much

in love

and they are

very much

in love

and they are

very much

in love

and they are

very much

in love

and they are

very much

in love

and they are

very much

in love

and they are

very much

in love

and they are

very much

in love

and they are

very much

in love

and they are

very much

in love

and they are

very much

in love

and they are

very much

in love

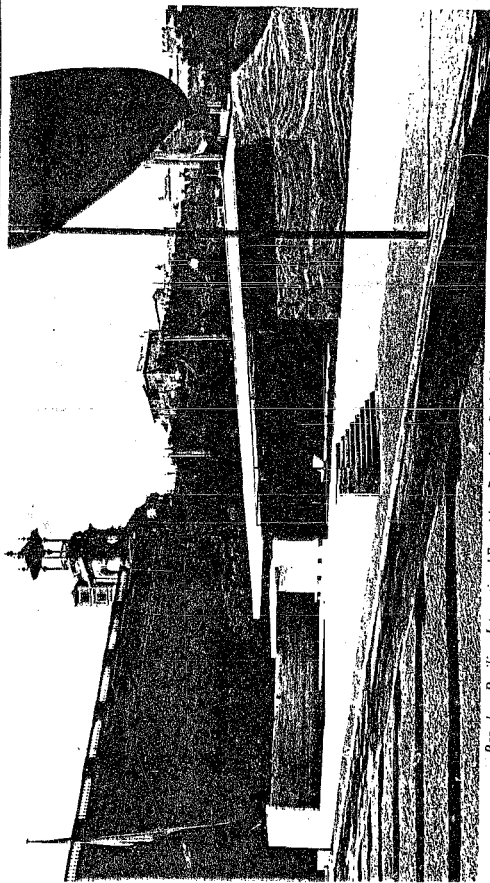
and they are

very much

in love

and they are

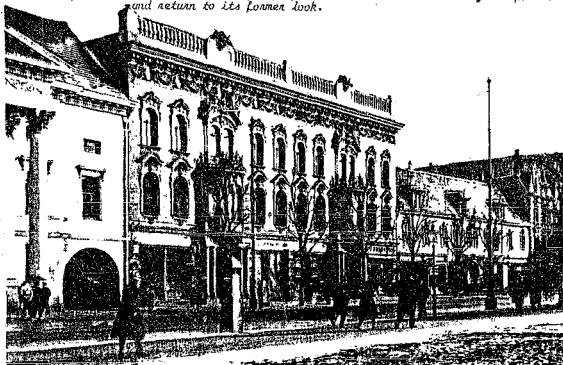
fig. 20.



Barcelona Pavilion, International Exposition, Barcelona, Spain, 1928-29.

*The building that became a myth from illustration. It will be interesting to see how this myth will be perpetuated now that the building has been resurrected.*

*Adherence to a 'style' makes people zealous about blotting out other styles. Today maybe people would want to remove the glass facade and return to its former look.*



*Under Mies. Eduard Ludewig redesigned an existing department store in Dessau, Germany, 1932. The store and its proposed new facade.*

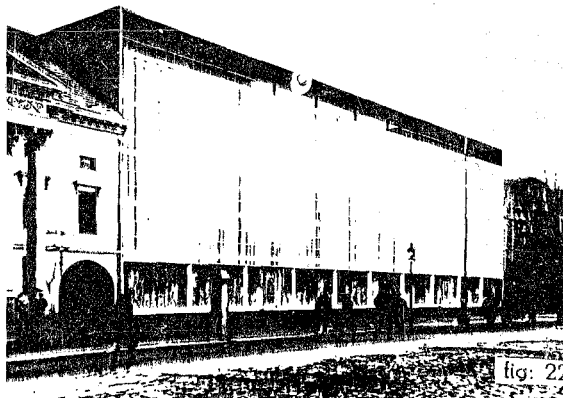
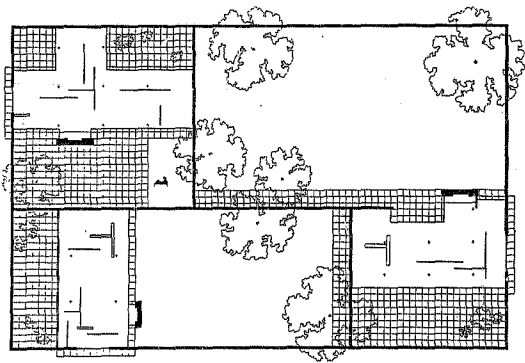
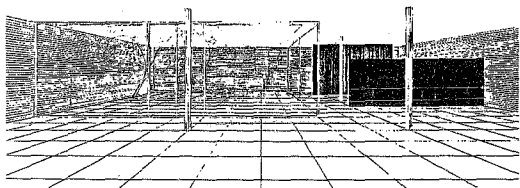


fig: 22

*Two Thespians in characteristic costume and gesture. Mies and Le Cobusièr—  
The modern movement was moving from fringe to centre.*

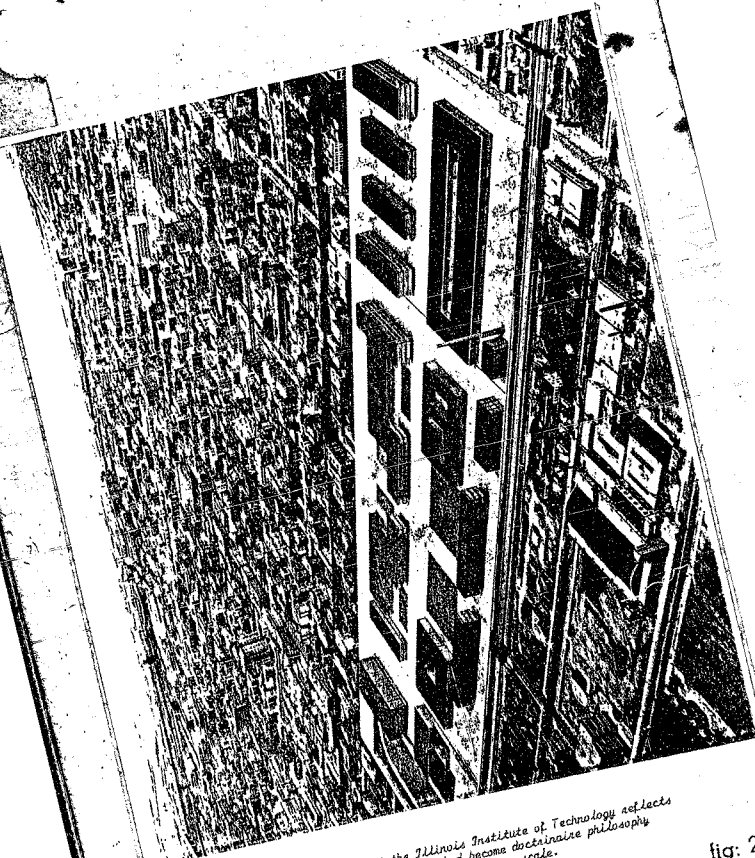


fig: 23.



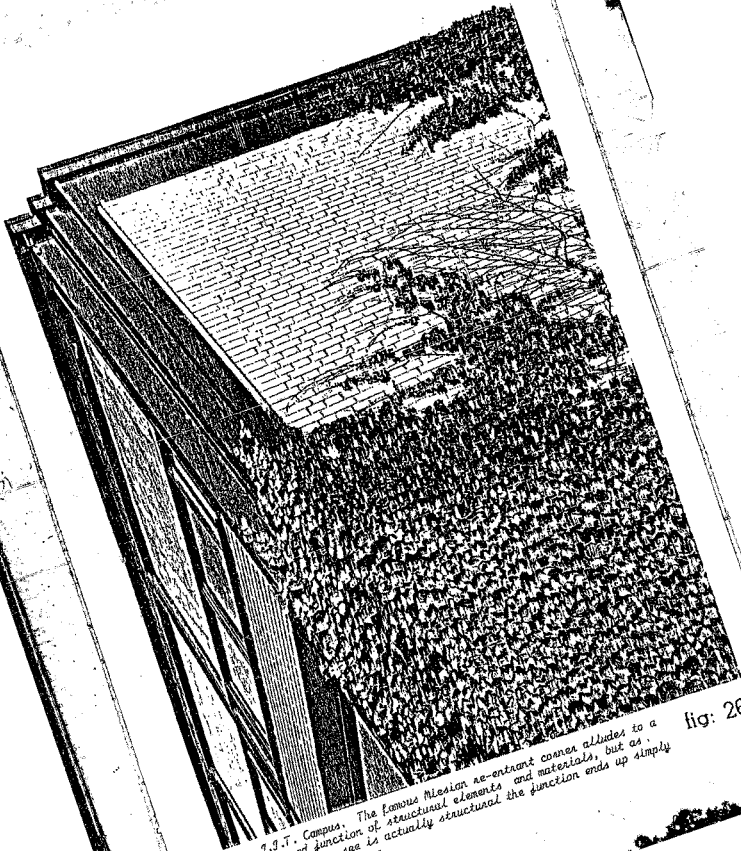
*The 'Courtyard House' projects conceived in the barren last turbulent days of the Bauhaus reflect invention in the grouping of buildings and an attempt at converting the intersecting planes into liveable entities. They were to inspire much subsequent housing with leaky flat roofs.*

fig: 24.



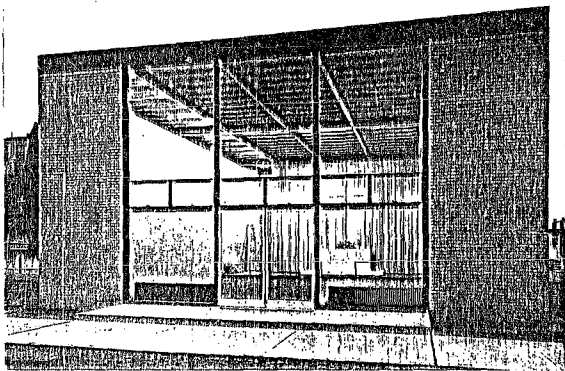
*The campus layout at the Illinois Institute of Technology reflects an attempt to transpose what had become doctrinaire philosophy and planning principles to a large urban scale.*

fig: 25.



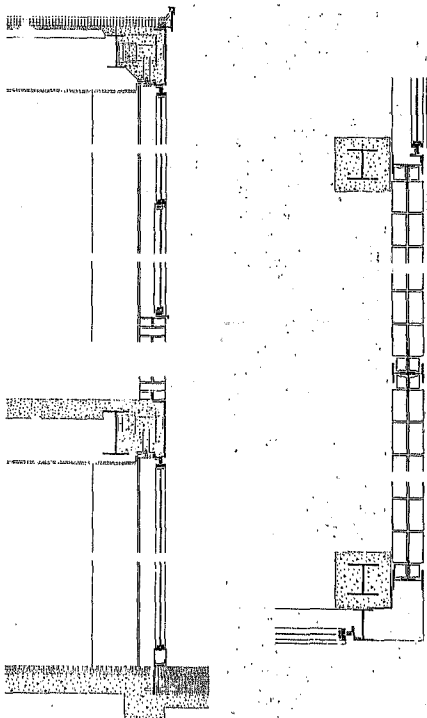
J. J. T. Campus. The famous Alteson apartment corner alludes to a refined function of structural elements and materials, but as nothing we see is actually structural the function ends up simply as dull decoration.

fig: 26.



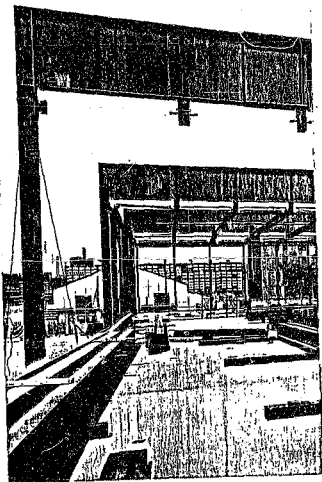
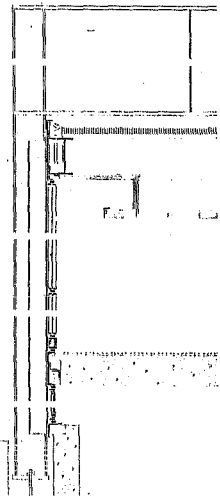
Kapelle, Illinois Institute of Technology, Chicago. 1952

*The much criticised I.T.T. Chapel is a plain building among other plain buildings. Its pristine purity is hard to sustain and calls for a cadre of like-minded image worshippers. 'Beinah nicht!' as a doctrine does not make a building a delight.*



*S.S.T. Campus. This section and plan reveal that the exposed steelwork externally serves only a decorative function for a two story building. This exposed steelwork is so extensive that it constitutes an entire duplication of structure and cost.*

fig: 28.



*J.P.T. Campus: Crown Hall. The large 'over-roof' portal beams have only an auxiliary role in supporting the roof slab. Hardly minimalist and essential.*

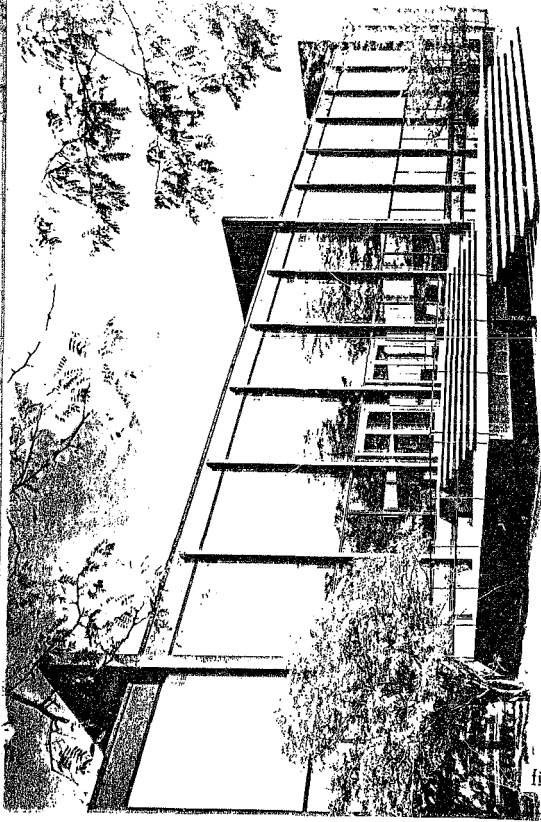
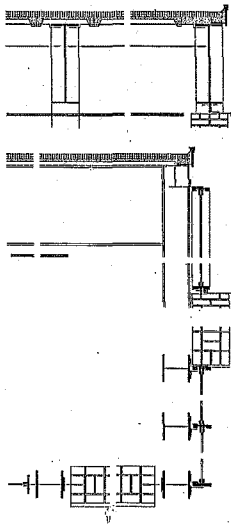
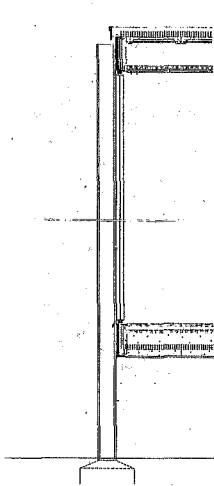


fig 30.

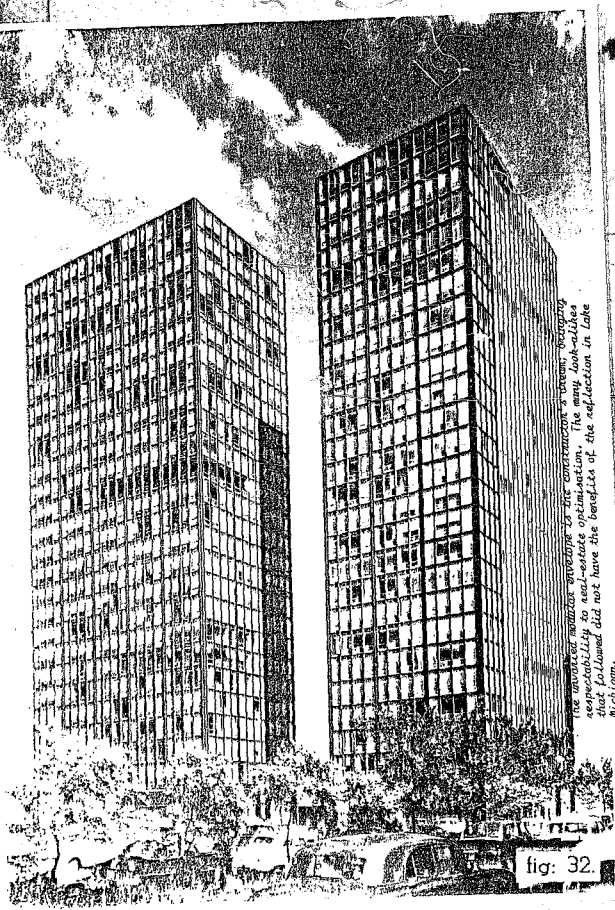
J. J. I. Campus: Four-Hall. The floating board stairs and the glass facade rhythm reflects the sky and foliage well. The use of the inside space has always been questionable and most of the teaching is in the basement. Age has taken the colossus from the building to leave it somewhat dilapidated.



*a. Section through the Farnsworth House. The fixing of the beams to the sides of the columns and the sizing of the steel for a single storey structure suggests the principal concern can only be a poetic homage to steel.*

*b. This plan again reflects excessive sizing and a duplication of the structural needs.*

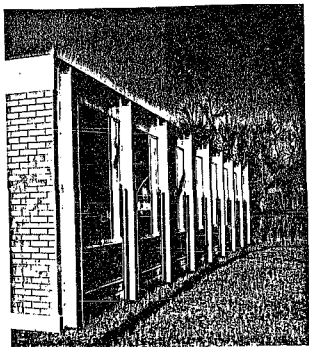
fig: 31.



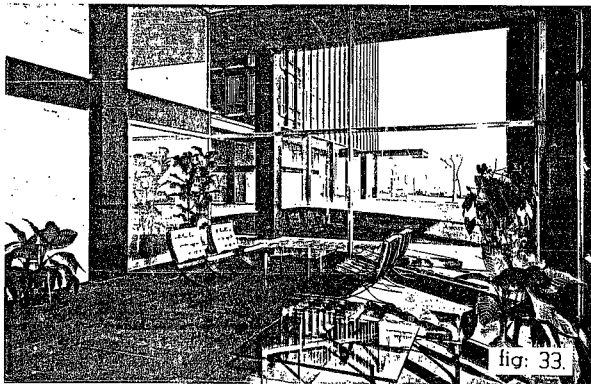
*the unvarnished, monolithic envelope is the concentration of vision, wrapping respectability to real-estate optimism. The many look-alikes that followed did not have the benefits of the reflection in Lake Michigan.*

fig: 32.

- a. *The Reichen Apartments, 1951.*—The steel columns are hardly required for structural purposes on a single storey building. If it is poetry or structural metaphor, it is also dull.

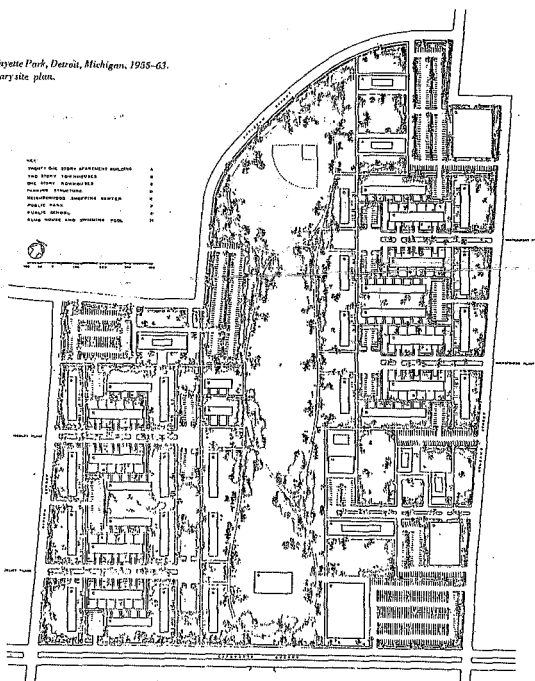


- b. *The Barcelona chair, the indoor plants, the see-through table and plate glass windows* spawned countless similar anonymous office foyers and reception areas.



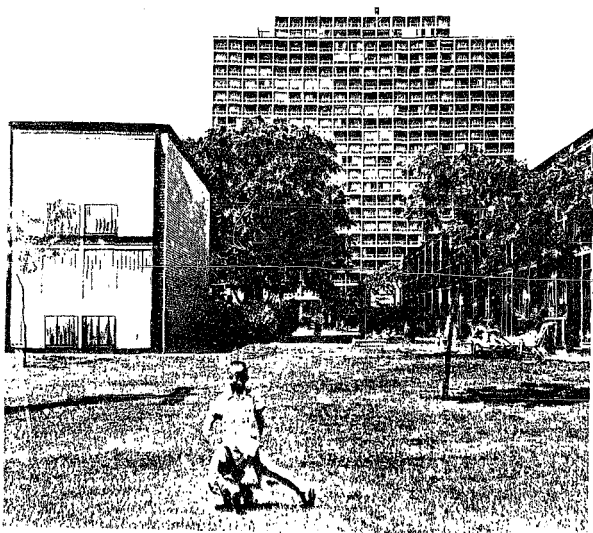
860 Lake Shore Drive. View of the lobby.

*Lafayette Park, Detroit, Michigan, 1935-63.  
Preliminary site plan.*



*This was the housing development built when Mies was at the zenith of his career and which brought so much praise from his critics. The slab blocks echo the I.I.T. campus.*

fig: 34.



Lafayette Park.

*Demarcation of private spaces of the inhabitants is absent and it would be interesting to see what has happened to the development today. A strong measure of social policing would be required to preserve the quality shown.*

*Framsworth house, Plano, Illinois, 1945-50.  
The very photogenic house in a photogenic  
setting, demonstrating that above all, the  
doctrine Mies was motivated by visual  
beauty first and foremost.*

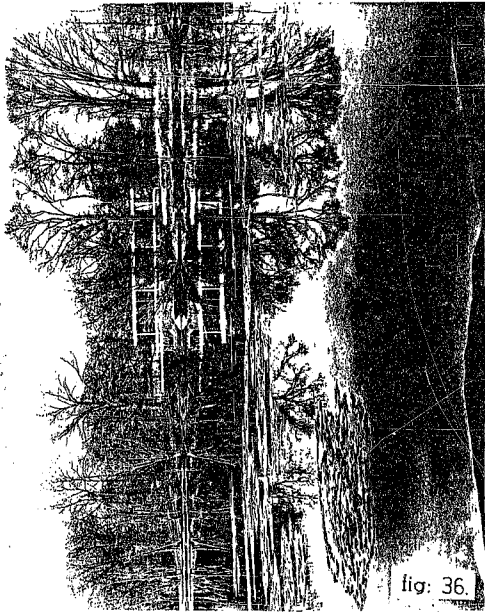
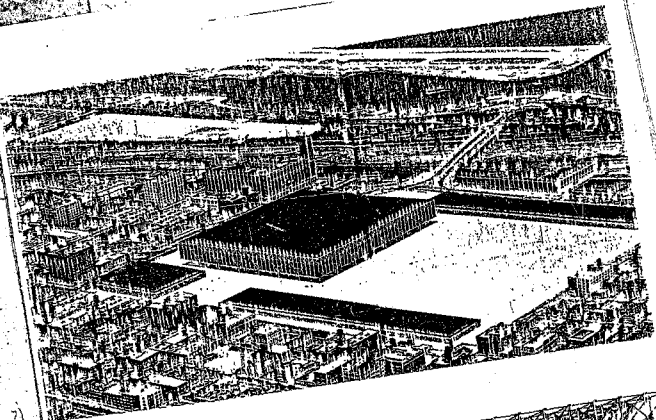
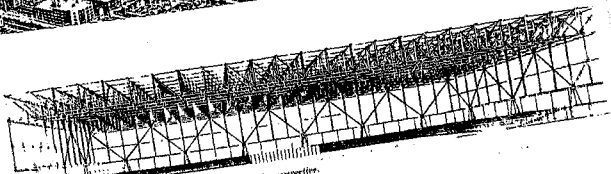


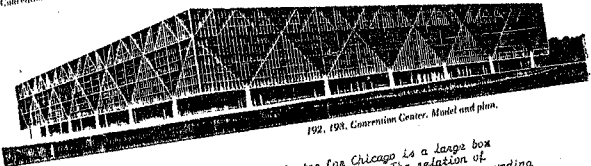
fig: 36.



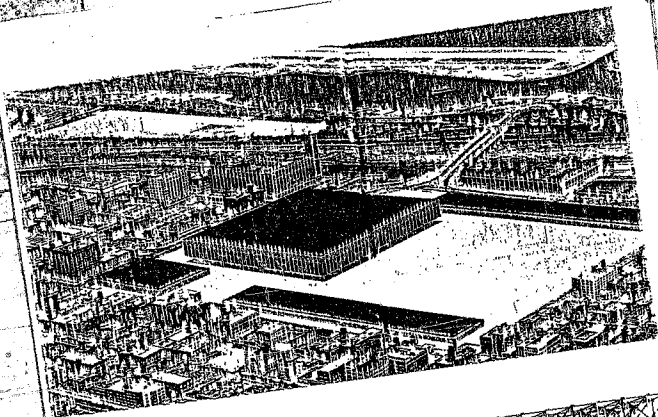
191. Convention Center, Chicago, Illinois, 1951-54. Interior perspective.



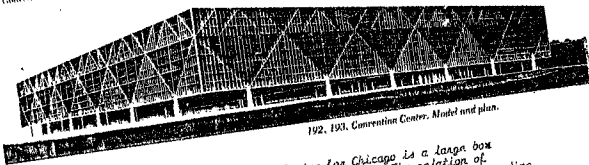
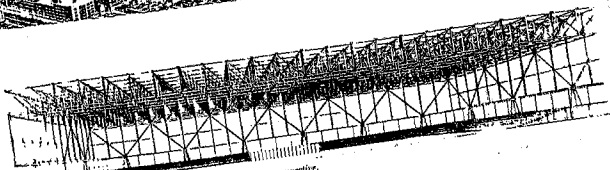
192. 193. Convention Center, Model and plan.



This massive intended Convention Center for Chicago is a large box expressing the pattern of its pe... trusses. The relation of this massive building to the adjoining open space and to the surrounding urban fabric raises many questions. There are many fine precedents for handling the scale of large buildings and relating to the surrounding open space, if one is still humble enough to look.



191. Convention Center, Chicago, Illinois, 1933-51. Interior perspective.

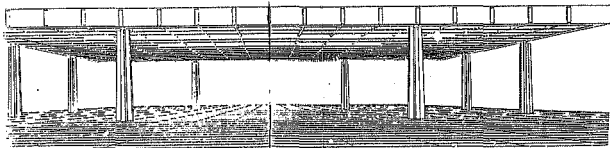


192. 193. Convention Center. Model and plan.

This massive intended Convention Centre for Chicago is a large box expressing the pattern of its perimeter trusses. The relation of this massive building to the adjoining open space and to the surrounding urban fabric raises many questions. There are many fine precedents for handling the scale of large buildings and relating to the surrounding open space, if one is still humble enough to look.

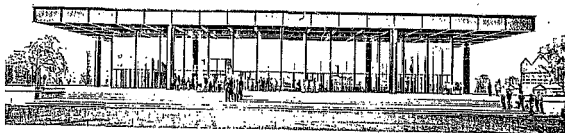
fig: 37.

a.



a. Structural system - Bicardi Building (1958) Santiago, Cuba.

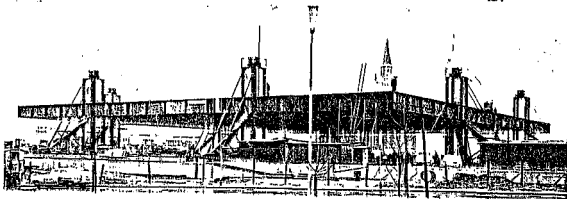
b. Structural system - National Gallery Berlin.



New National Gallery, Berlin. Exterior view.

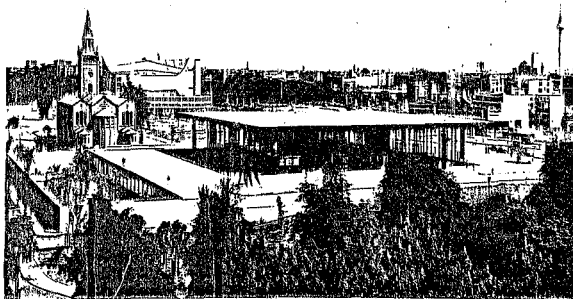
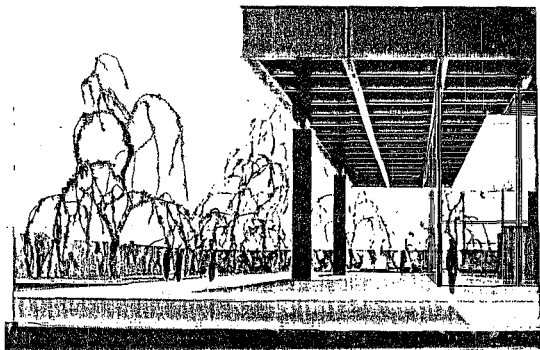
New National Gallery, Berlin. The raising of the roof and columns into position.

b.



An engineering exercise and an engineering miracle - no wonder  
Mies was greatly admired by engineers.

fig: 38.



*New National Gallery and adjacent buildings in the Koperplatz.*

*The transparent glass box as an Art Gallery to display painting and sculpture will tamé and haunt the supporters of the idea. In Berlin today the Ries National Gallery and Scharoun's Philharmonic Building in the background stand finally as monuments to the debate between the expressionists and the modernists of the early twenties.*

fig: 39.

*Seagram's, New York - an elegant tombstone in a designer's graveyard.  
To straightjacket the divisive whims of the client and the authorities  
must be the pinnacle of pontifical virtue.*



*Toronto Dominion Centre -  
The human art in the inflexible  
skyscraper.  
Clarity and order may not  
be enough.*

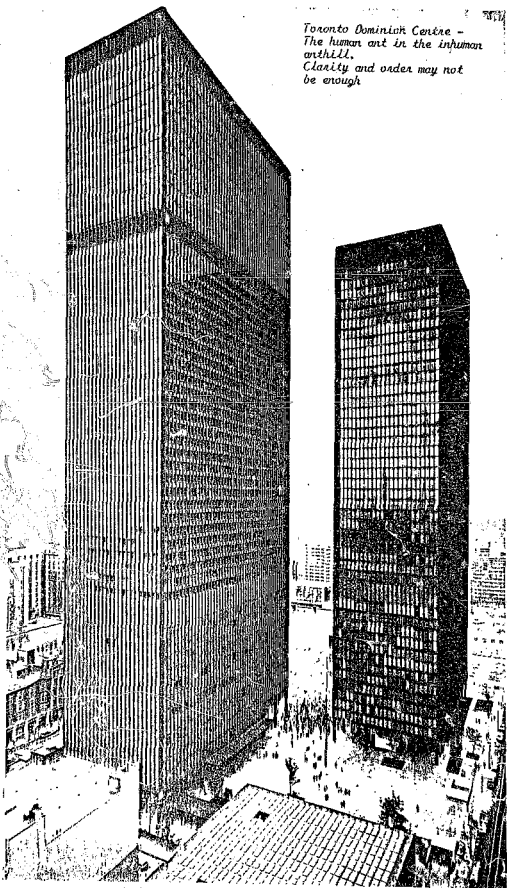
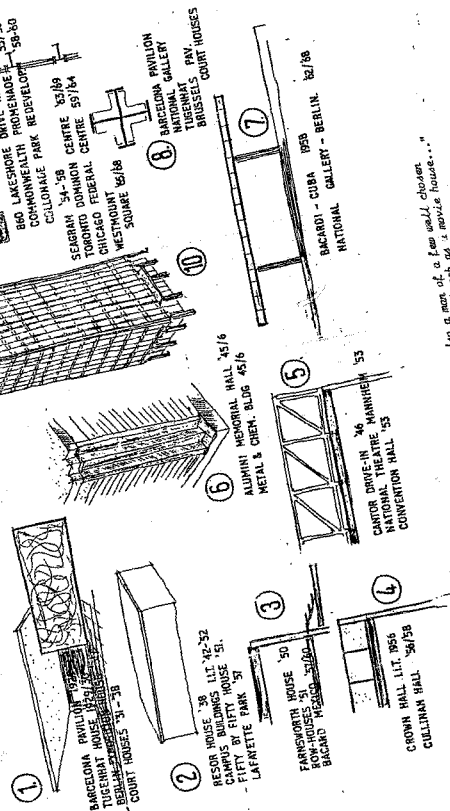


fig: 41.

# ELEMENTS OF MIES'S DESIGN



*A man of a few well chosen words, and also a man of a few well chosen architectural elements. "I would not build a church as a movie house..."*

fig: 42.



*Poised to pontificate !!*

fig: 43.

MIES VAN DER ROHE : NEO-RELIGIOUS PHILOSOPHY

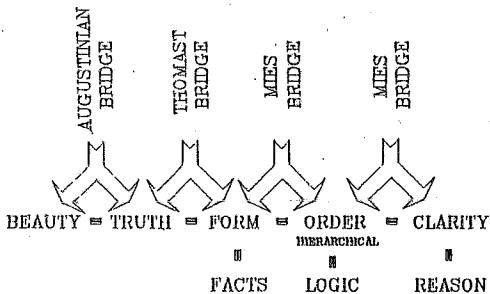


fig. 44



**Author** Gordon G

**Name of thesis** Mies Van Der Rohe: Less Is More: More Or Less?: An Exploration Of His Doctrines For The Purpose Of Illustrating The Problem Of Architectural Pontification. 1987

***PUBLISHER:***

University of the Witwatersrand, Johannesburg

©2013

***LEGAL NOTICES:***

**Copyright Notice:** All materials on the University of the Witwatersrand, Johannesburg Library website are protected by South African copyright law and may not be distributed, transmitted, displayed, or otherwise published in any format, without the prior written permission of the copyright owner.

**Disclaimer and Terms of Use:** Provided that you maintain all copyright and other notices contained therein, you may download material (one machine readable copy and one print copy per page) for your personal and/or educational non-commercial use only.

The University of the Witwatersrand, Johannesburg, is not responsible for any errors or omissions and excludes any and all liability for any errors in or omissions from the information on the Library website.