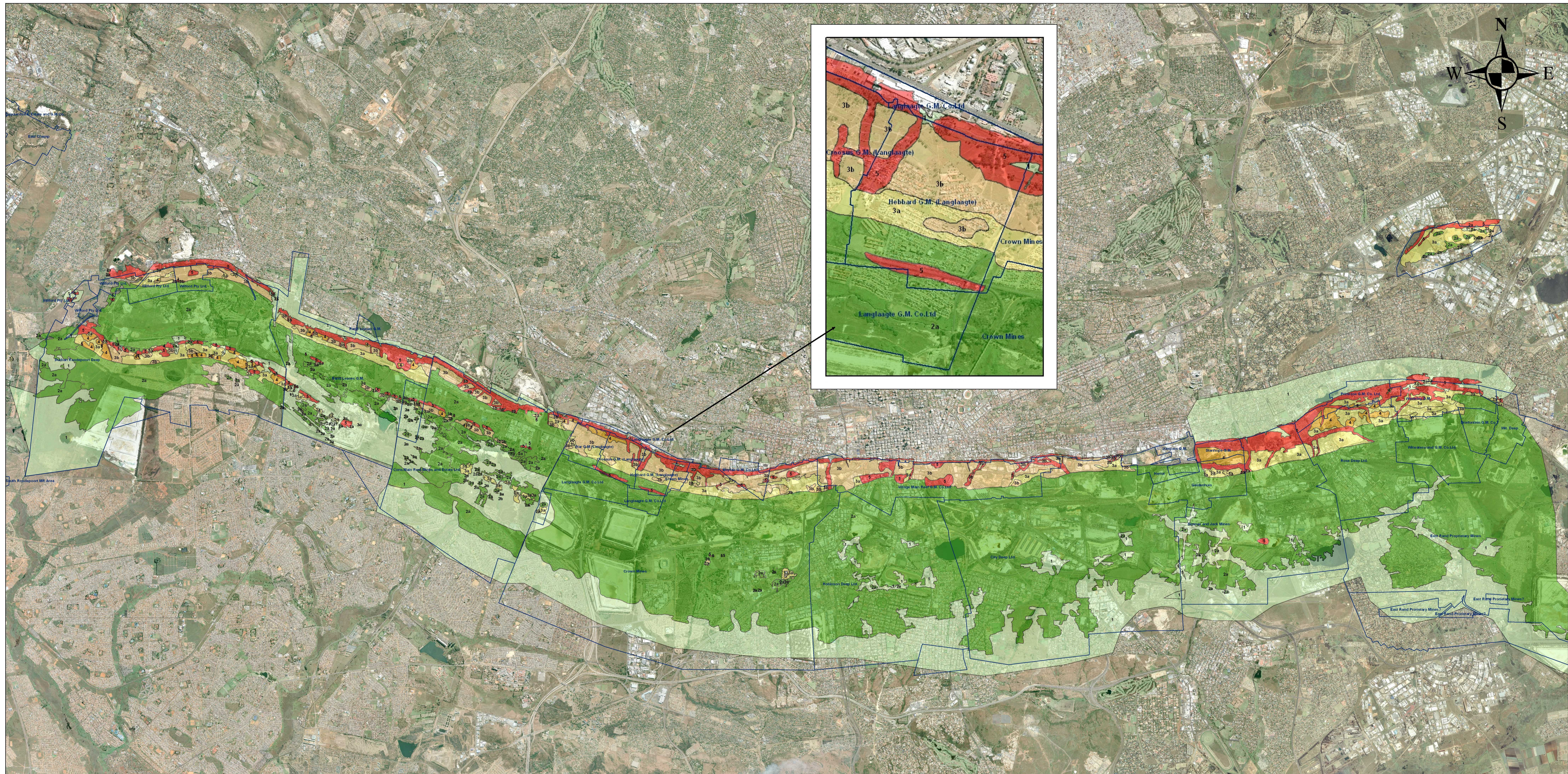


# CENTRAL WITWATERSRAND MINING LAND STUDY SUBSIDENCE RISK ANALYSIS (BARKER, 1993)



## Legend

- 1- No undermining(North of Reef)
- 2a-Negligible risk to structures. Minor elastic deformation-condition will not change were mining to reoccur
- 3a-Negligible risk to structures. Minor elastic deformation-condition would change significantly were mining to reoccur
- 3b-Zone of previously significant surface movement has now reached a minimum i.e. no mining since 1963. Condition could dramatically change were mining to recommence
- 4-Zone in which rate of surface movement is in decline i.e. mining has occurred in the period between 1963 & 1983
- 5- Zone of incipient instability

0 1 2 4 6 8 Kilometers

1:35,000