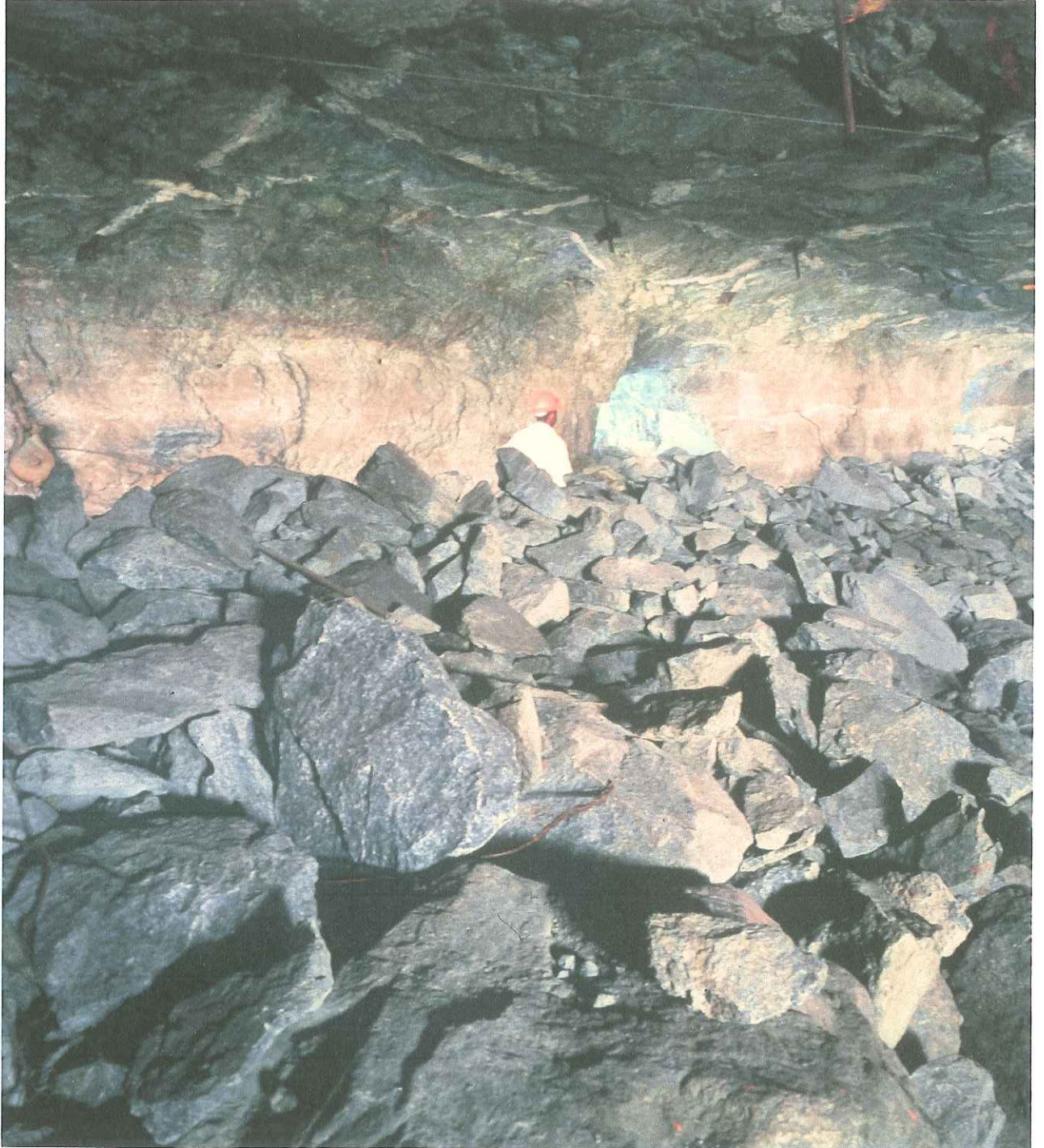


VOLUME 2

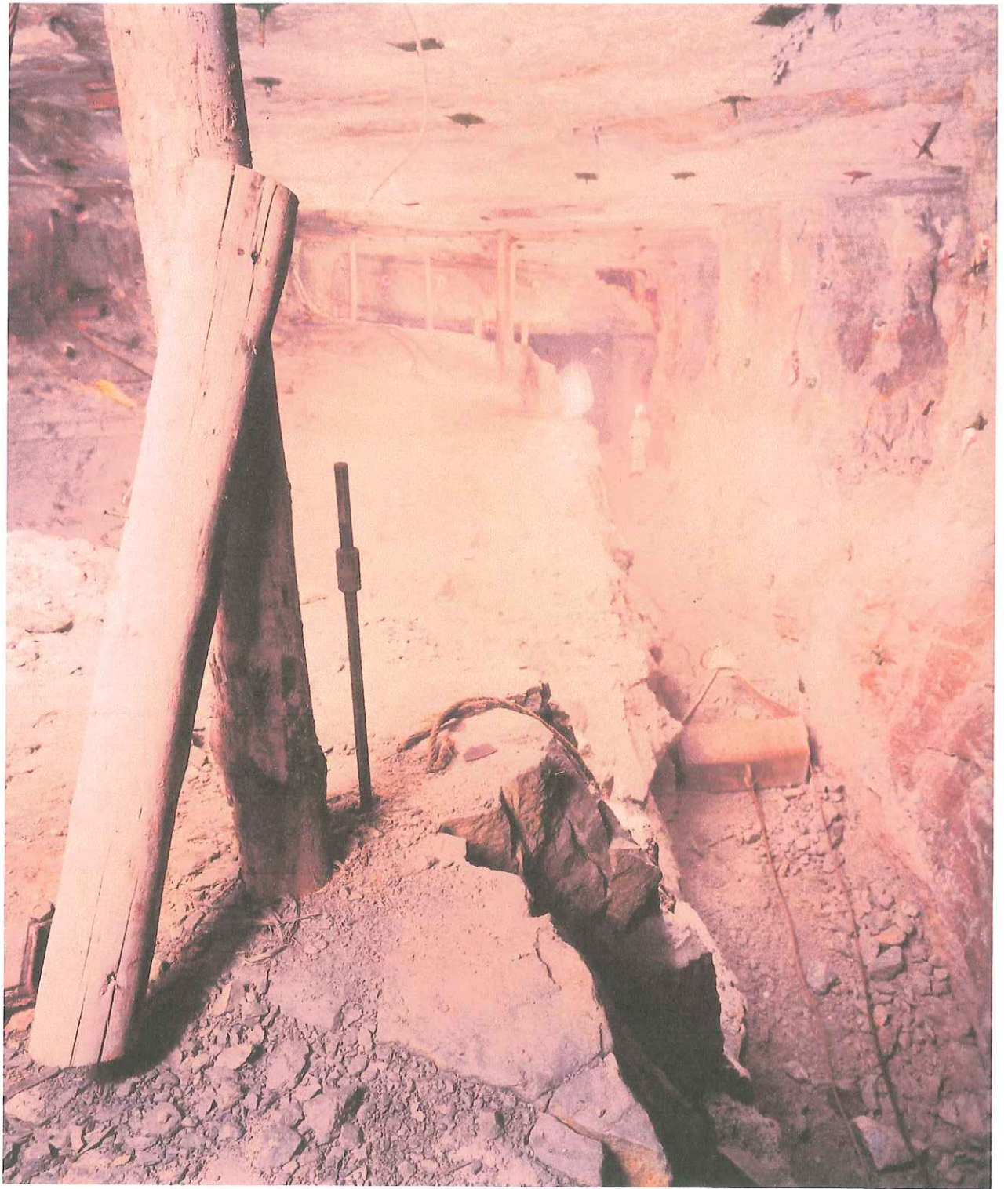
ANNEXURE 2.1

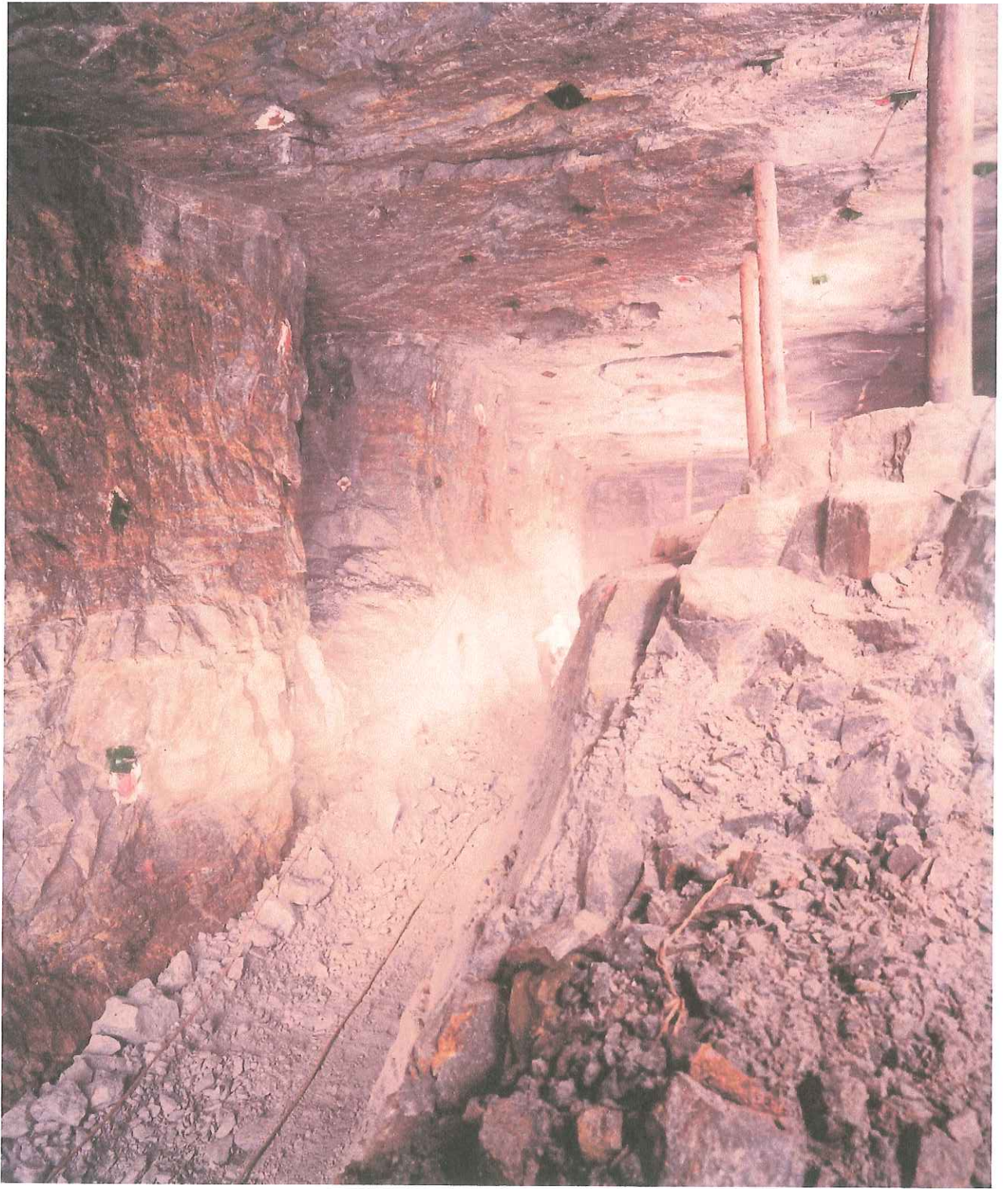
**Photographs showing accumulation of rock
and also dilution from the necessity to
establish deep gullies to provide capacity for
scraper mining in conventional wide reef
stopes**









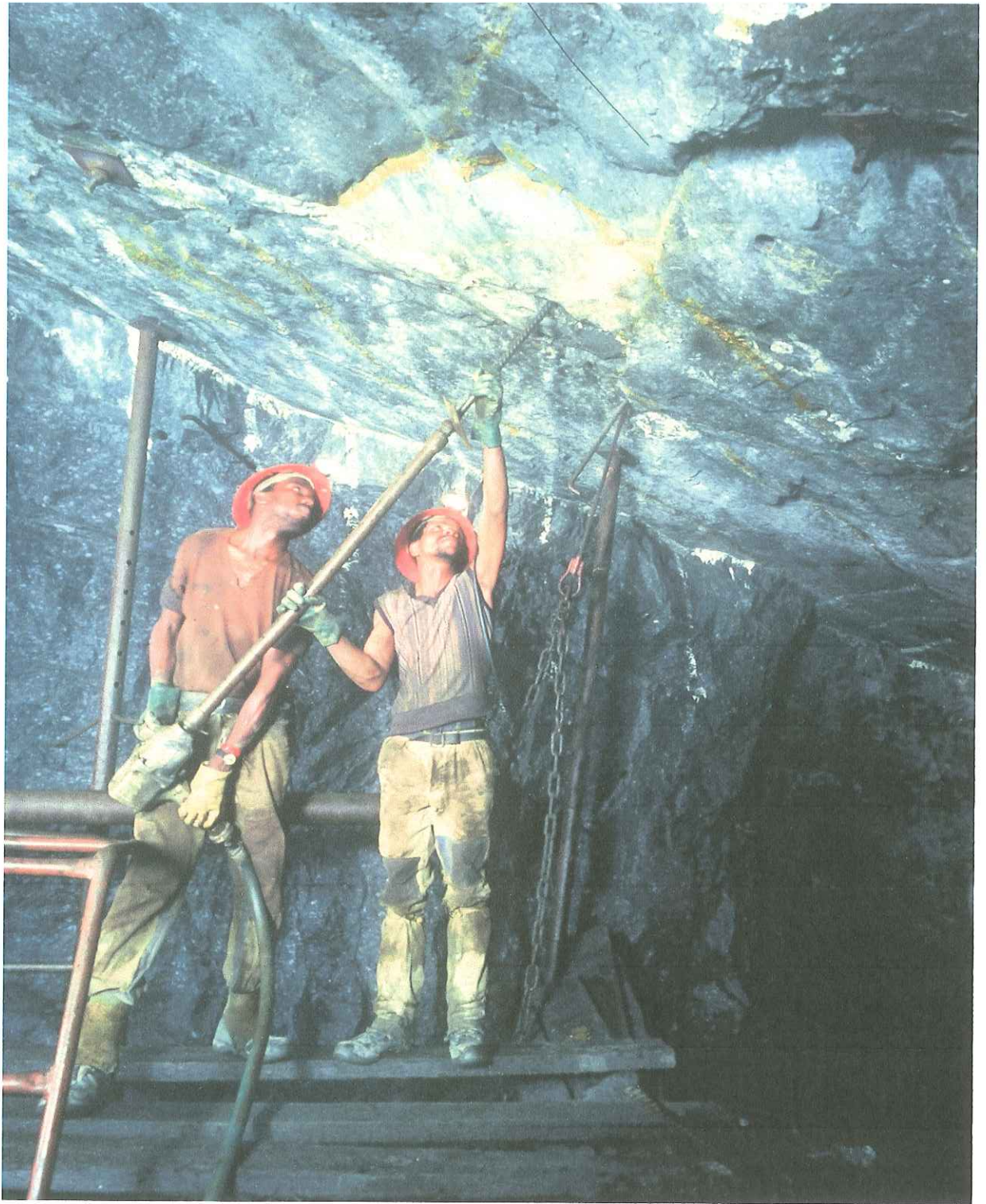


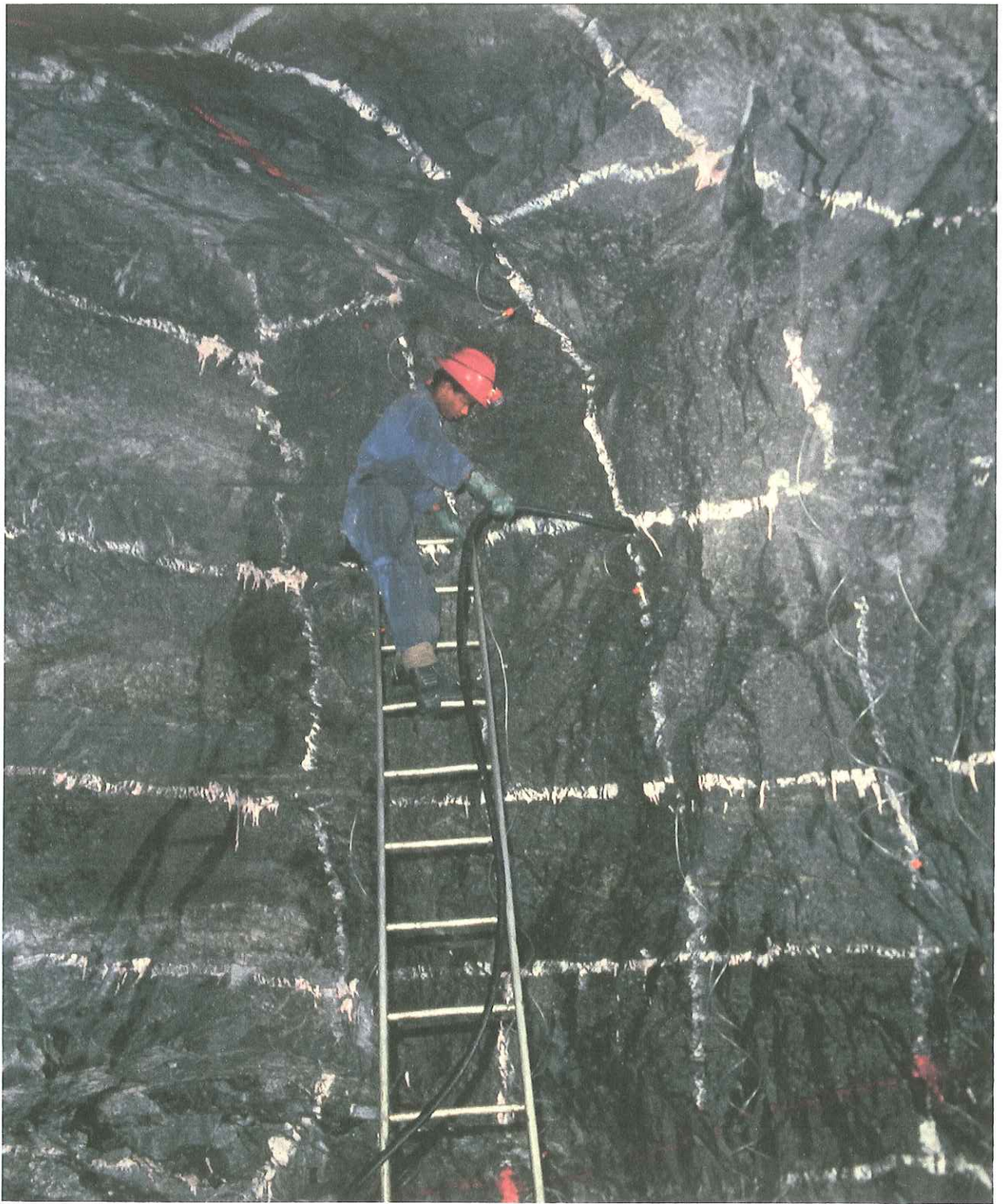


VOLUME 2

ANNEXURE 2.2

**Photographs showing the necessity for
platforms and ladders for drilling, making
safe and charging up operations in
conventional wide reef stopes**





VOLUME 2

ANNEXURE 3.1

Final Preliminary Motivational Report

RANDFONTEIN ESTATES GOLD MINING COMPANY, WITWATERSRAND, LIMITED

MEMORANDUM

TO : THE GENERAL MANAGER

FROM : ACTING MINE MANAGER - COOKE 1 & 2

SUBJECT : TRACKLESS MINING AT COOKE 2

DATE : 31 JANUARY 1984

I hereby submit a final preliminary report on a proposed trackless mining operation at Cooke 2 Shaft.



K.A. RHODES
ACTING MINE MANAGER
COOKE 1 & 2

KAR/im

TRACKLESS MINING OPERATION AT COOKE 2 SHAFT

I N D E X

	<u>Page</u>
SUMMARY REPORT	
TECHNICAL REPORT	
1. INTRODUCTION	1.
2. GEOLOGY	1.
3. RESERVES	4.
4. ROCK MECHANICS CONSIDERATIONS	4.
4.1 Overstoping	4.
4.2 Regional Pillars	6.
4.3 Primary and Secondary Extraction	6.
4.4 Pillar Size and Percentage Extraction	6.
5. MINING DESIGN AND PLANNING	6.
5.1 Production Parameters	6.
5.2 General Mining Layout	7.
5.3 Cycle of Operations	7.
5.4 Ventilation	14.
5.5 Equipment, Workshops and Other Engineering Constructions	15.
6. LABOUR	17.
7. TRAINING	17.
8. EFFICIENCIES	18.
9. SAFETY	19.
10. COSTS	21.