

Images

Red Mounds, 1995

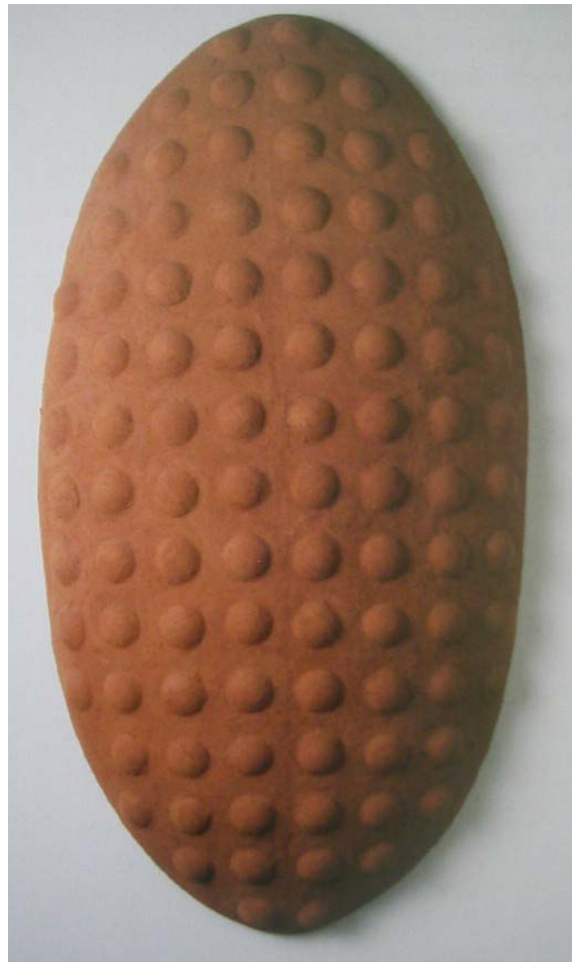
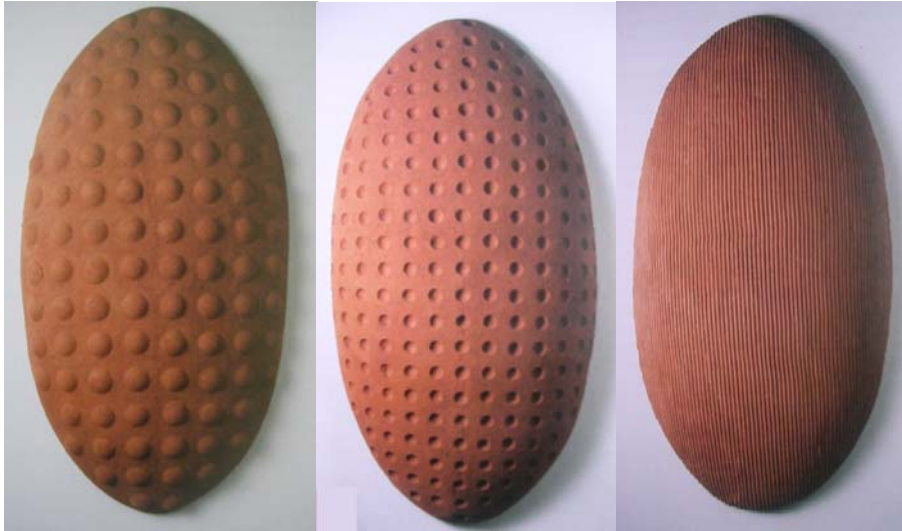


Figure 1a
Jeremy Wafer, *Red Mound 'Pocked'*, (1995)



Figure 1b
Jeremy Wafer, *Red Mound 'Imped'*, (1995)



Figure 1c
Jeremy Wafer, *Red Mound 'Scratched'*, (1995)

African Forms, 1996



Figure 2a
Jeremy Wafer, *African Form i*, (1996)
Plaster, Wax, Pigment



Figure 2b
Jeremy Wafer, *African Form ii*, (1996)
Plaster, Wax, Pigment



Figure 2c
Jeremy Wafer, *African Form iii*, (1996)
Plaster, Wax, Pigment



Figure 2d
Jeremy Wafer, *African Form iv*, (1996)
Plaster, Wax, Pigment



Figure 2e
Jeremy Wafer, *African Form v*, (1996)
Plaster, Wax, Pigment



Figure 2f
Jeremy Wafer, *African Form vi*, (1996)
Plaster, Wax, Pigment



Figure 2g
Jeremy Wafer, *African Form vii*, (1996)
Plaster, Wax, Pigment



Figure 2h
Jeremy Wafer, *African Form viii*, (1996)
Plaster, Wax, Pigment

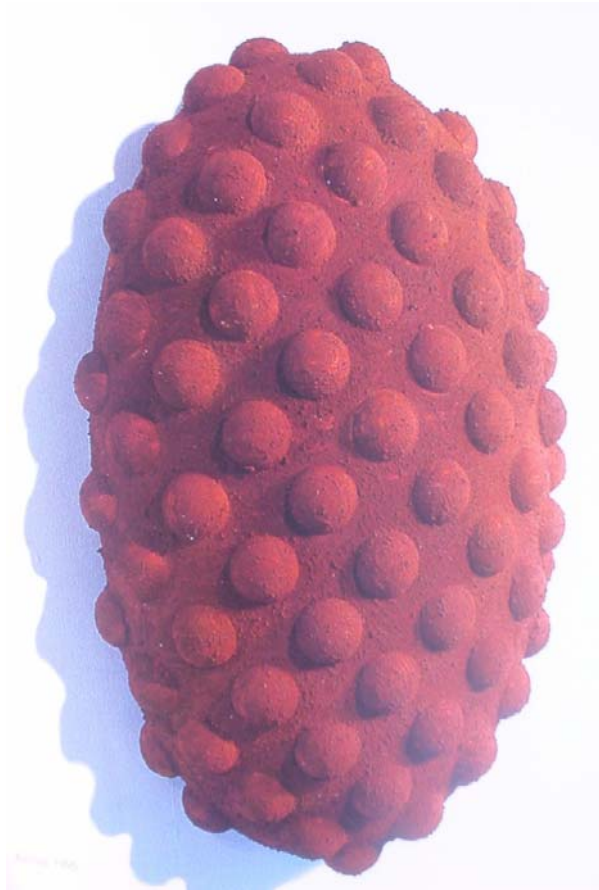


Figure 2i
Jeremy Wafer, *African Form i*, (1996)
Plaster, red *Ibomvu*

Red Ovals, second series, 1998

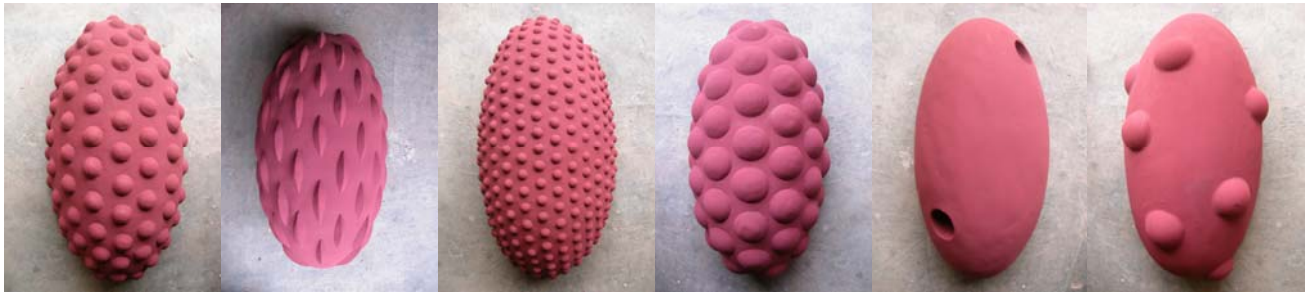


Figure 3a
Jeremy Wafer, *Red Oval 1*, (1998)
Polymer, red oxide or *Ibomvu*



Figure 3b
Jeremy Wafer, *Red Oval 2*, (1998)
Polymer, red oxide or *Ibomvu*



Figure 3c
Jeremy Wafer, *Red Oval 3*, (1998)
Polymer, red oxide or *Ibomvu*



Figure 3d
Jeremy Wafer, *Red Oval 4*, (1998)
Polymer, red oxide or *lbomvu*



Figure 3e
Jeremy Wafer, *Red Oval 5*, (1998)
Polymer, red oxide or *Ibomvu*



Figure 3f
Jeremy Wafer, *Red Oval 6*, (1998)
Polymer, red oxide or *lbomvu*



Figure 4
Jeremy Wafer, *Large White Oval*, (2004)
Polymer



Figure 5
Zulu Beer Pot

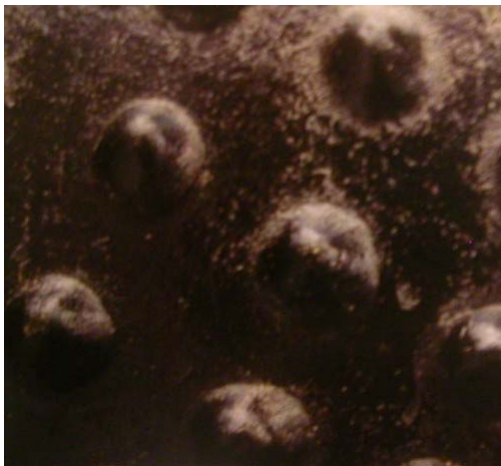


Figure 6
Amasumpa



Figure 7
Zulu Meat Platter



Figure 8
Zulu Milk Pail



Figure 9
Scarification



Figure 10
Constantin Brancusi
Bird in Space



Figure 11
Constantin Brancusi
Sleeping Muse



Figure 12
Linda du Preez, *Simulacra*
View 1



Figure 13
Linda du Preez, *Simulacra*
View 2



Figure 14
Linda du Preez, *9 Forms (white)*
Polymer

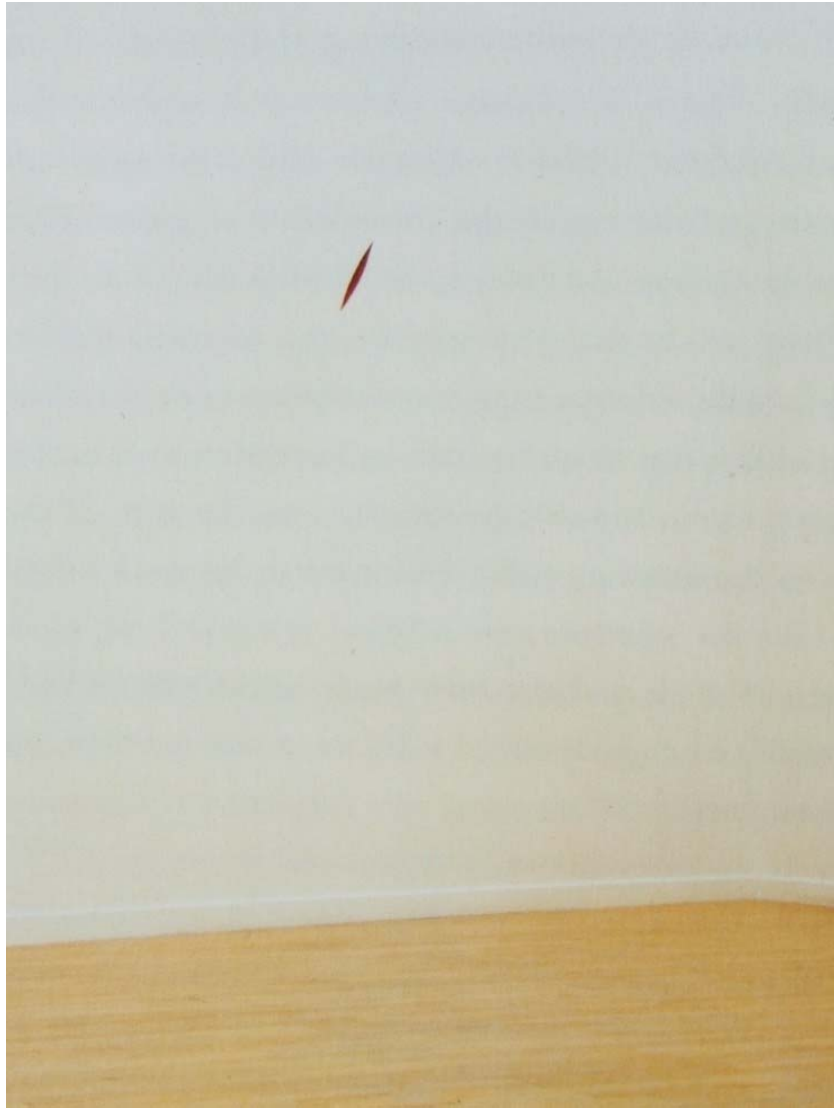


Figure 15
Anish Kapoor, *The Healing of St Thomas*



Figure 16
Linda du Preez, detail: 9 *Forms (white)*
'coupure'
Polymer



Figure 17
Linda du Preez, 2 *single white forms*
'floating'
Polymer



Figure 18
Linda du Preez, *9 Forms (black)*
Urethane



Figure 19
Linda du Preez, *3 Spikes*
Polymer, Wood, Marble Dust



Figure 20
Linda du Preez, *Black Suspended Spikes*
Detail
Wood, Rubber, Shoe Polish



Figure 21
Linda du Preez, *small pile of bones*
Wood, Cast Iron



Figure 22
Linda du Preez, *Large Bones*
Polymer, Plaster-of-Paris, Wax



Figure 23
Linda du Preez, *Endless Column*
Plaster-of-Paris, Wax



Figure 24
Linda du Preez, *3 protruding Mounds*
Plaster-of-Paris

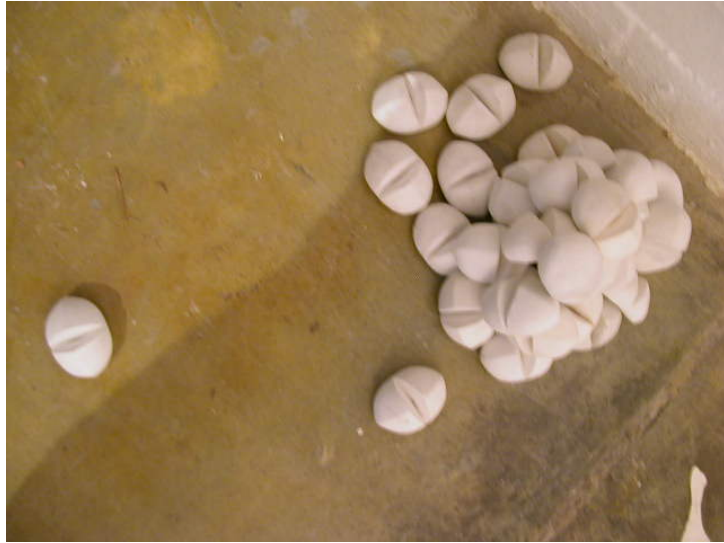


Figure 25
Linda du Preez, *small Mesembs*
Polymer, Plaster-of-Paris



Figure 26 a
Linda du Preez, *Toes 1*
Polymer

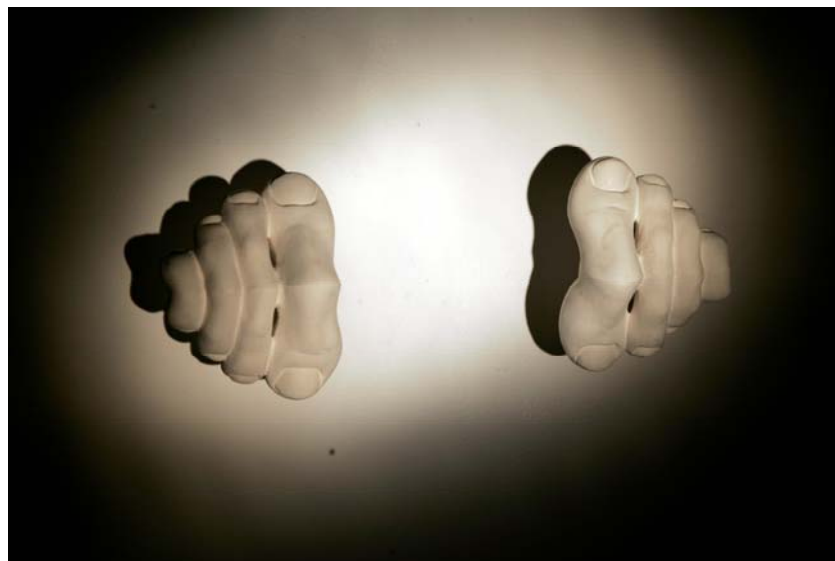


Figure 26 b
Linda du Preez, *Toes 2*
Polymer



Figure 27a
Linda du Preez, *Simulacra*
Detail: Video Projection



Figure 27b
Linda du Preez, *Simulacra*
Detail: Video Projection