

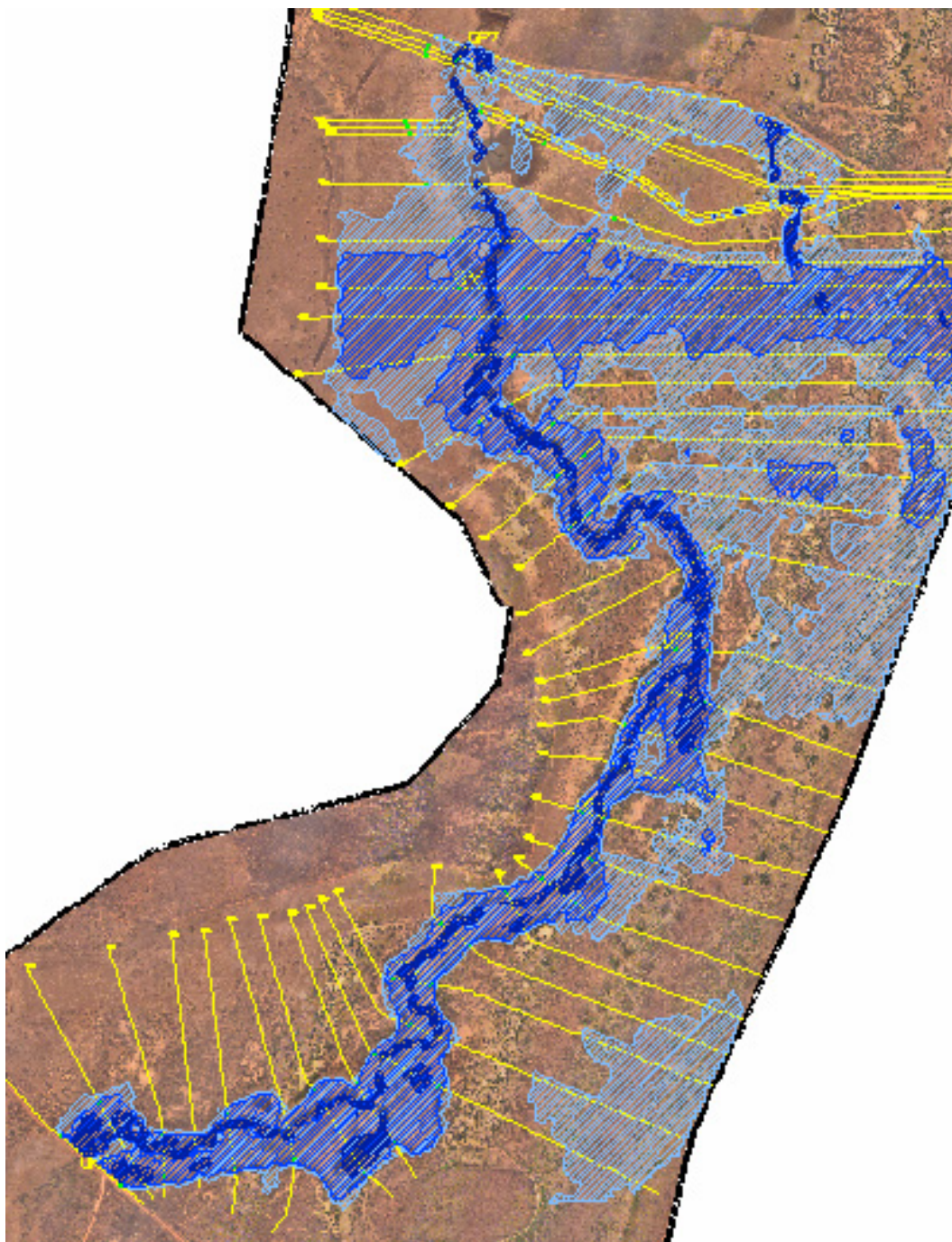
## Appendix C:

### ***Example of a flood inundation map drawn with RiverCAD***

Figure 1 (after Birkhead *et al*, 2004) is an example of a floodplain inundation map drawn with RiverCAD, using the water stage levels at each cross-section from the HEC-RAS simulations. The figure shows the progression of flooding in the Nylsvley Reserve for the first six days of the first flow event in 2000, superimposed on a background orthophoto of the floodplain. The positions of cross-sections are indicated in yellow. The flows for the first, third and sixth days are given in Table 1.

**Table 1: Modelled inflow and outflow discharges for the Nylsvley Reserve for a six day period in January 2000 (after Birkhead *et al*, 2004)**

Date	Average daily discharge (m <sup>3</sup> /s)	
	Inflow	Outflow
15/01/2000	0.38	0.15
18/01/2000	2.21	0.23
21/01/2000	8.67	2.30



**Figure 1:** Modelled progression of a flood wave through the Nylsvley Reserve, plotted for 15, 18 and 21 January 2000 in reducing shades of blue (after Birkhead *et al*, 2004)