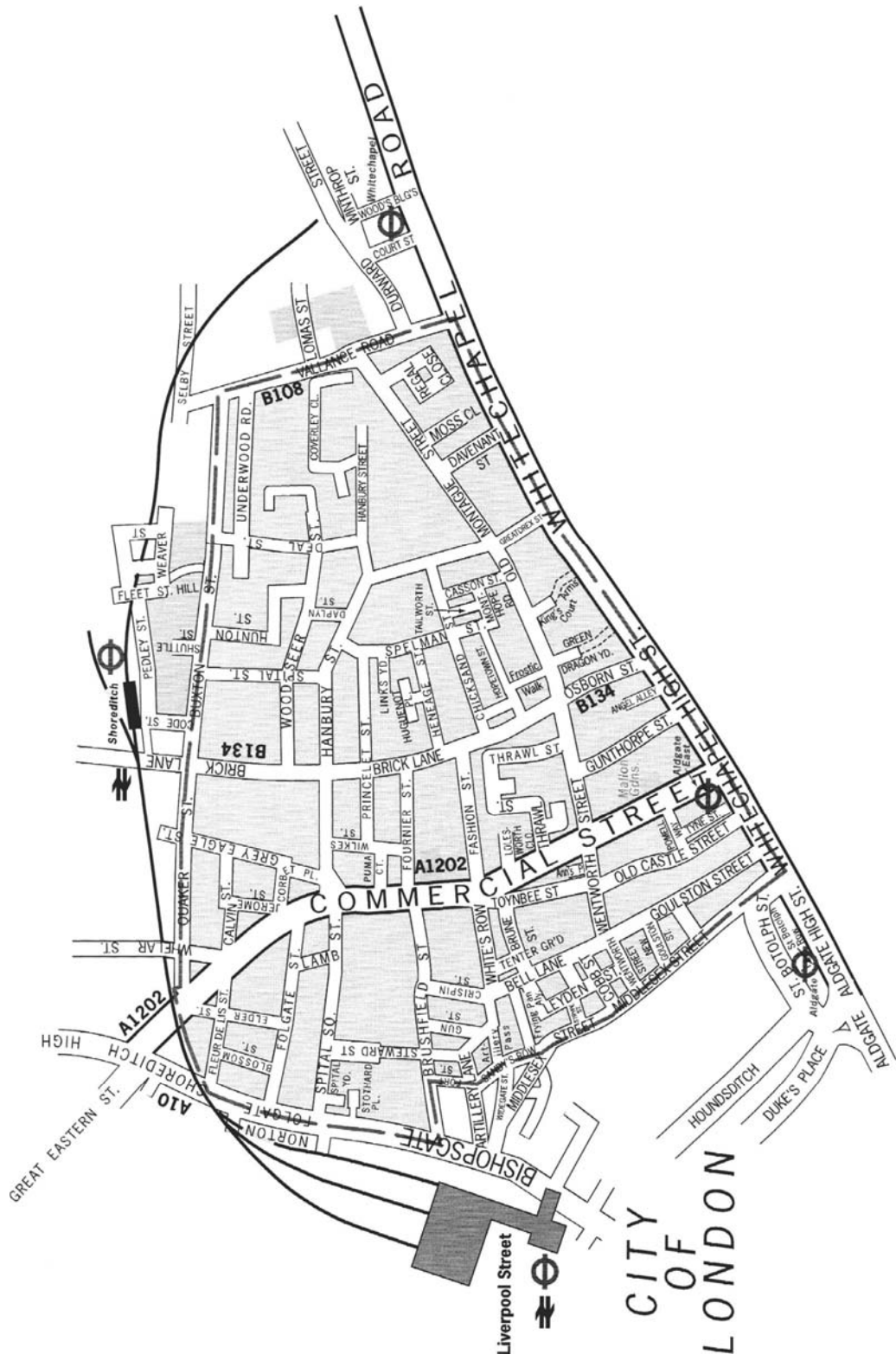


APPENDIX A

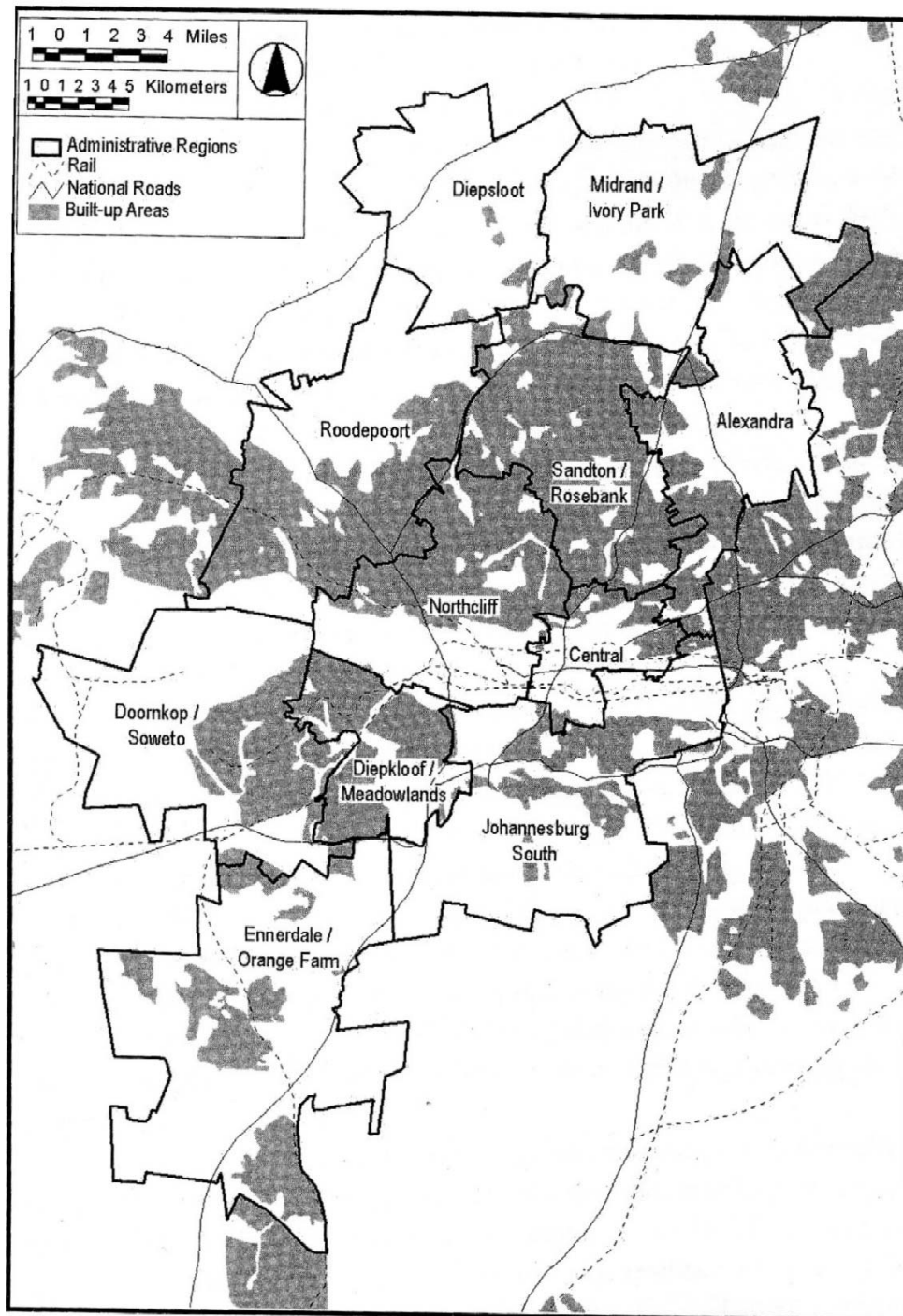
SPITALFIELDS STREET MAP

(Source: www.towerhamlets.gov.uk)



APPENDIX B

CITY OF JOHANNESBURG METROPOLITAN MUNICIPALITY
(Source: Tomlinson, R., Beauregard, R., Bremner, L. & Mangcu, X. (2003))



APPENDIX C

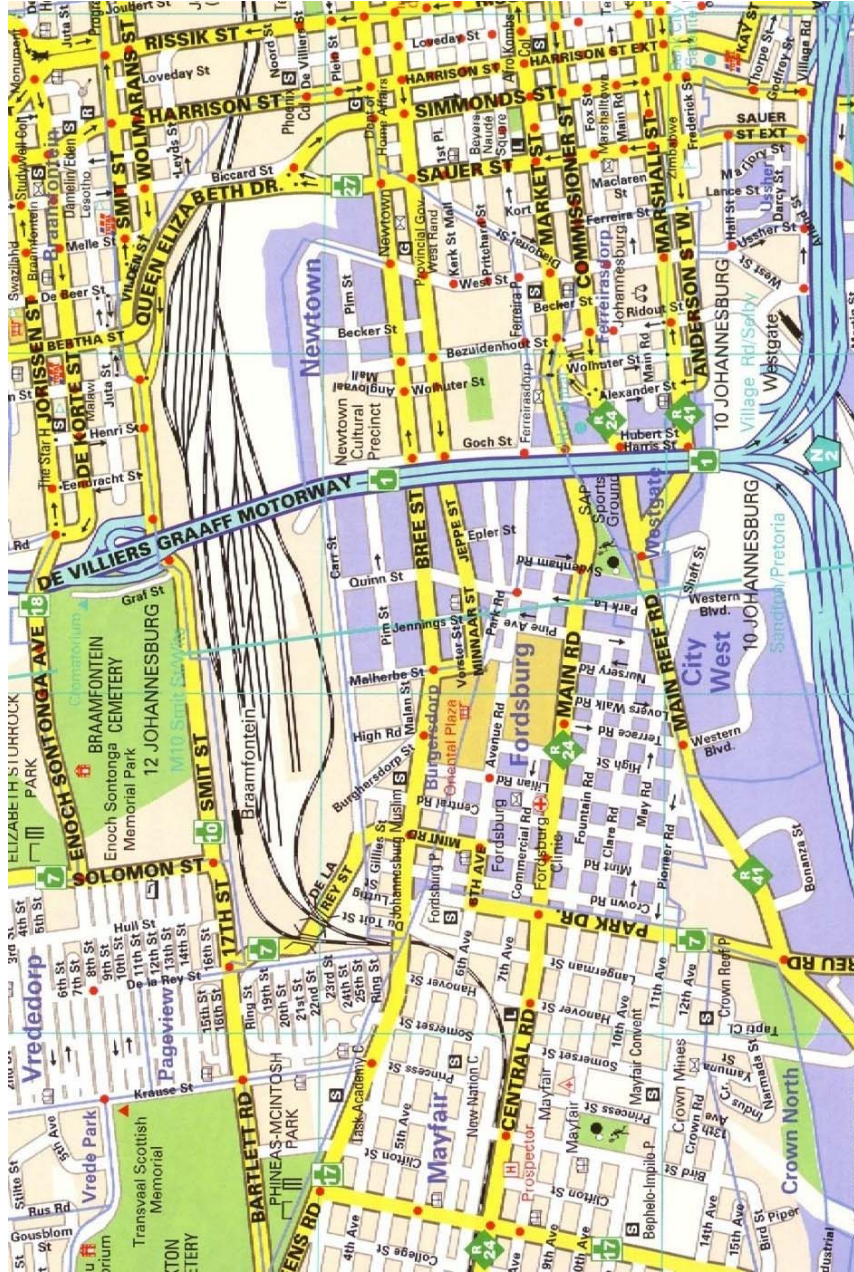
URBAN DEVELOPMENT ZONE: JOHANNESBURG INNER CITY (Source: City of Johannesburg Metropolitan Municipality)



APPENDIX D

JHB INNER CITY STREET MAP

(Source: MapStudio Street Guide: Witwatersrand, 12th Edition)



APPENDIX E

PROPOSED SITE FOR INDIAN COMMERCIAL CENTRE

(Source: Dunlop, Heywood & Co., Chartered Surveyors, 1965)



PROPOSED SITE FOR INDIAN COMMERCIAL CENTRE

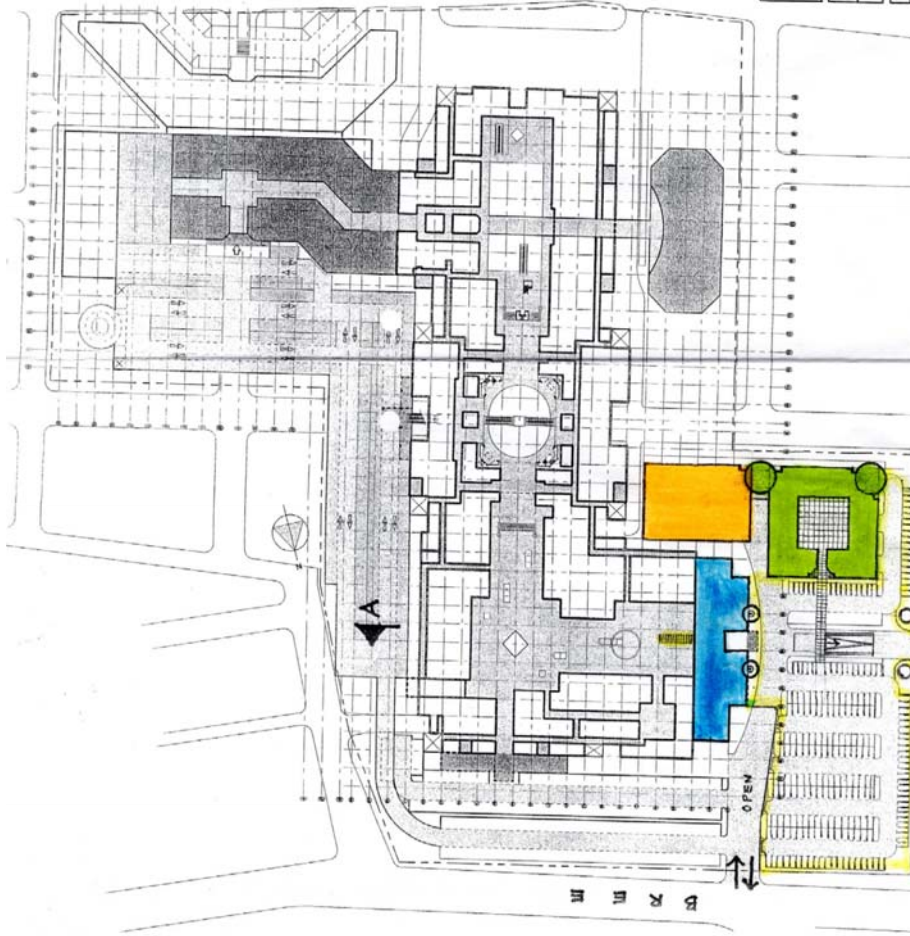
APPENDIX F

AERIAL PHOTOGRAPH OF FORDSBURG & SURROUNDS (Source: City of Johannesburg Metropolitan Municipality)



APPENDIX G

PLAN FOR PROPOSED ORIENTAL PLAZA UPGRADE (Source: Oriental Plaza Body Corporate)



ENTRANCE

RETAIL DEPARTMENT
(45x22.5m)

ENTERTAINMENT
CENTRE (CINEMA)
(22m x 10m)

LINE OF NEW SHOPS
(17.75m x 10m)

NEW BANKING MALL

NEW FOOD COURT

NEW PUBLIC
PARKING BAYS

EXISTING SHOPS
AND PARKING

ATZ
ARCHITECTS
PRACTICE
ARCHITECTS INC
1A, 100, NORTH BRIDGE ROAD
TEL: 002 244 2220 FAX: 002 244 2714

PROJECT ORIENTAL PLAZA

CLIENT

DESCRIPTION
MASTERPLAN

SCALE 1:1500 DRAWN SW DATE JUN '03 CHECKED

PROJECT NO. 369/02 DRAWING NO. SK 03

OPTION II SCALE 1:1500
NORTH BRIDGE ROAD LEVEL 1500
ENTRANCE LEVEL 1500
ENTERTAINMENT CENTRE LEVEL 1500
NEW BANKING MALL LEVEL 1500
NEW FOOD COURT LEVEL 1500
NEW PUBLIC PARKING BAYS LEVEL 1500
EXISTING SHOPS AND PARKING LEVEL 1500

ENTRANCE
LEVEL 2: Parking
And Banking Mall

ORIENTAL PLAZA
LVL 2 UPGRADE OF EXISTING CENTRE