

FIG. 4.

Reconstruction and analysis of palatal view
of skull of Specimen A.

FIG. 4.

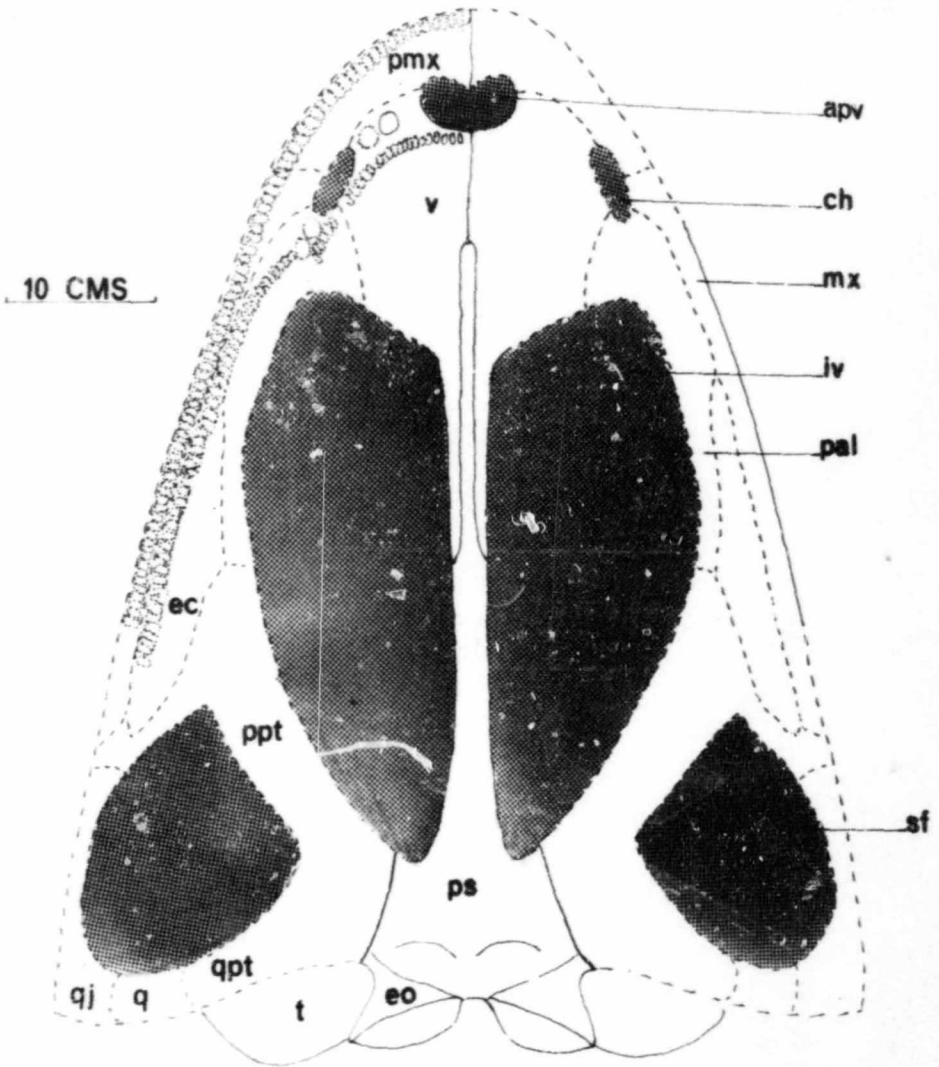


FIG. 5.

Reconstruction and analysis of occipital view of Specimen A.

FIG. 5.

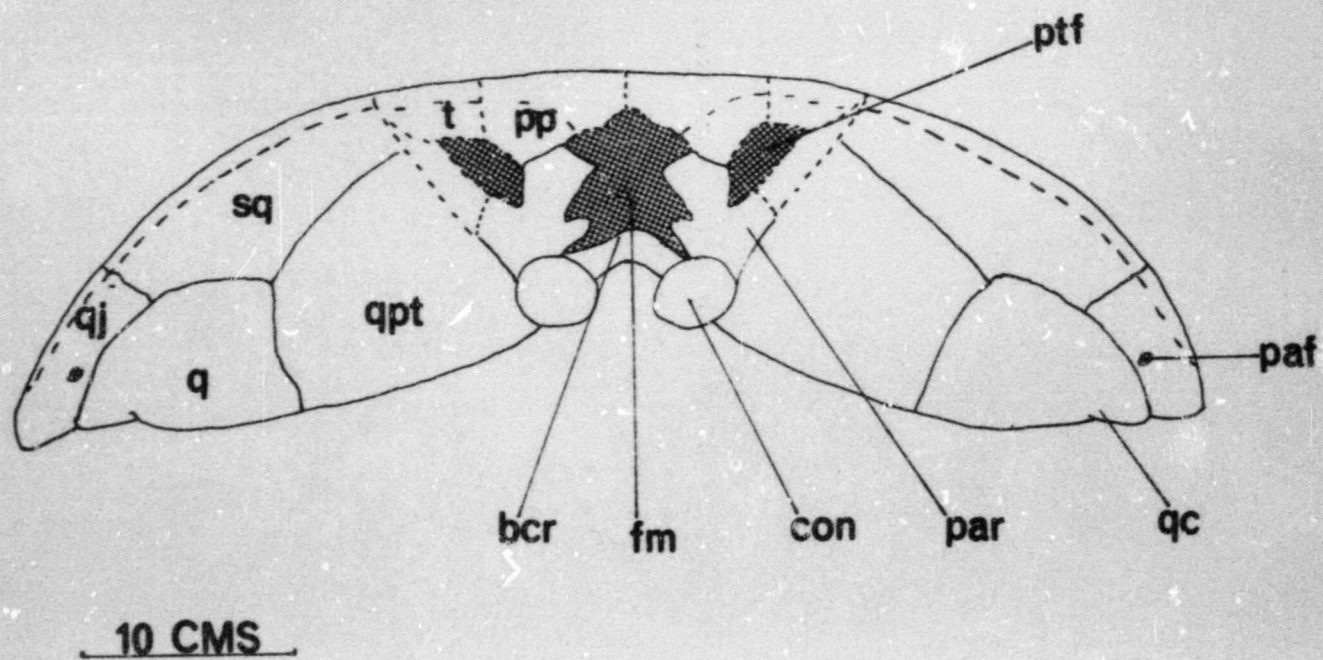


FIG. 5.

tion and analysis of occipital view of Specimen A.

FIG. 6.

Palatal view of vomer and cultriform process
of Specimen A, as preserved.

FIG. 6.

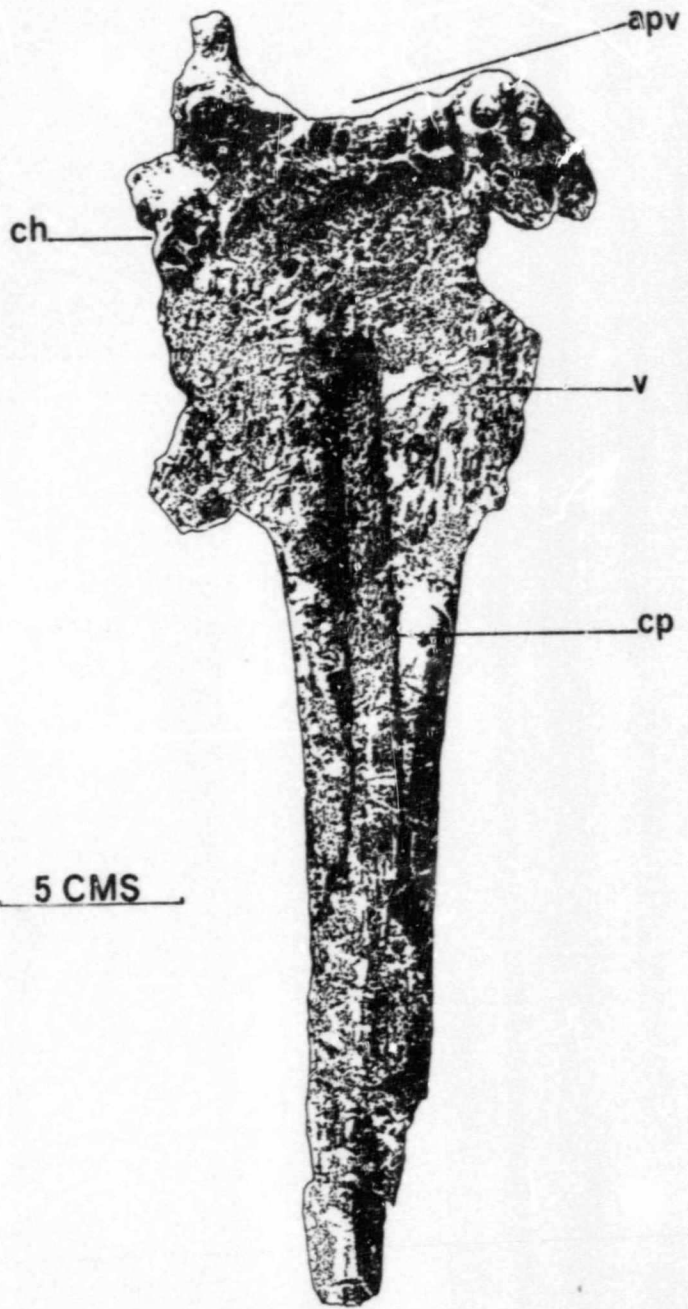


FIG. 7.

Posterior view of braincase of Specimen A, also
showing posterior view of left exoccipital.

FIG. 7.

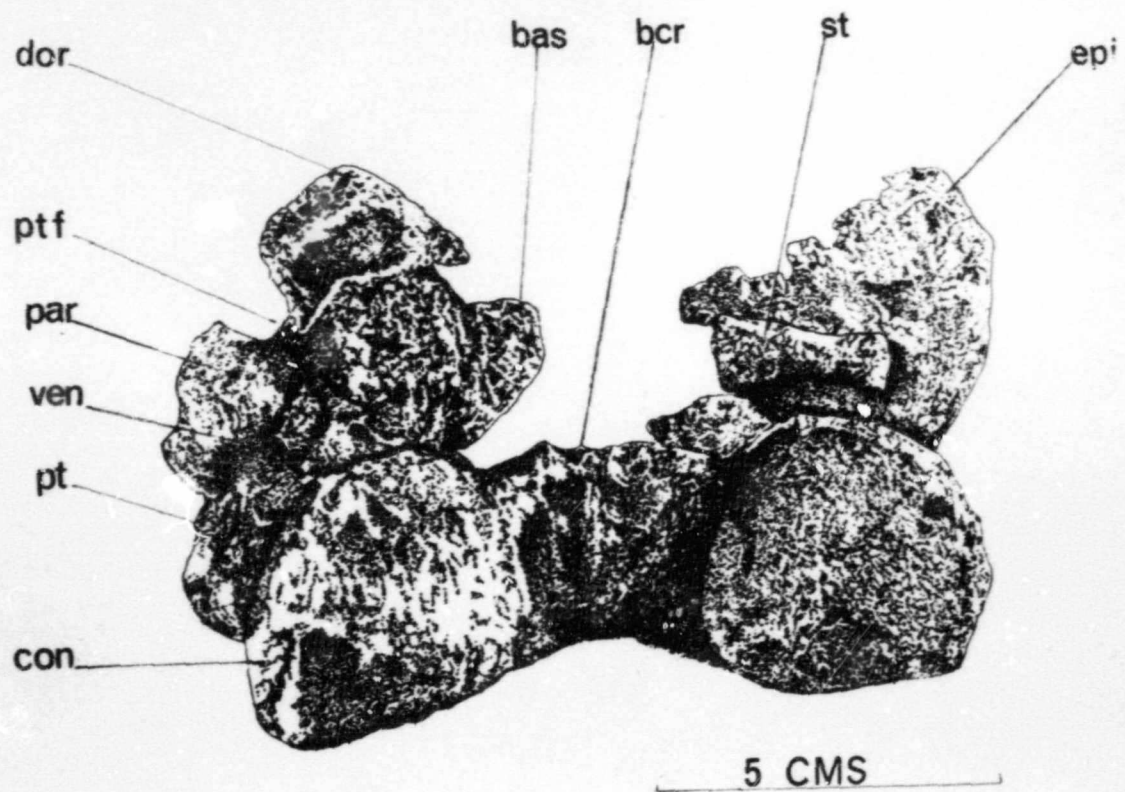


FIG. 7.

posterior view of braincase of Specimen A, also
showing posterior view of left exoccipital.

Posterior view of postero-lateral area of
skull of Specimen A.

FIG. 8.

FIG. 8.

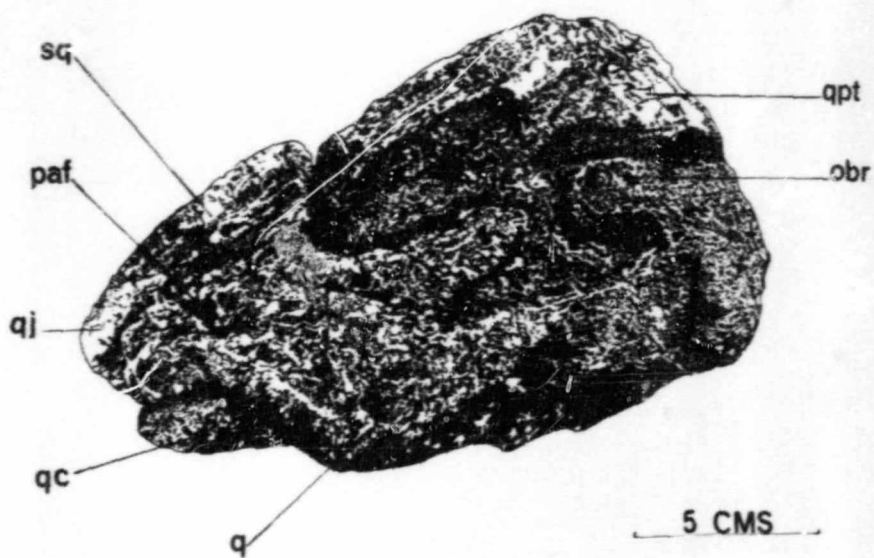
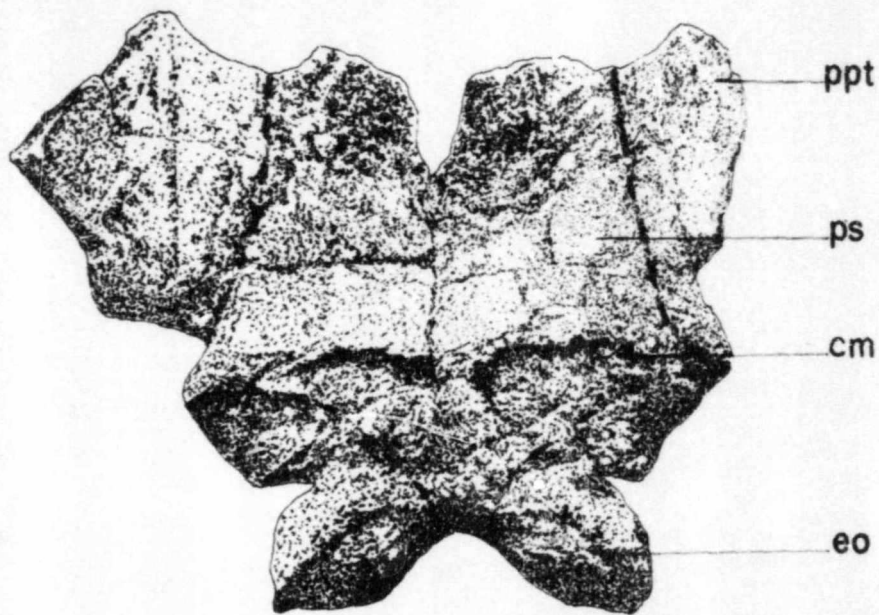


FIG.9.



5 CMS

FIG. 11.

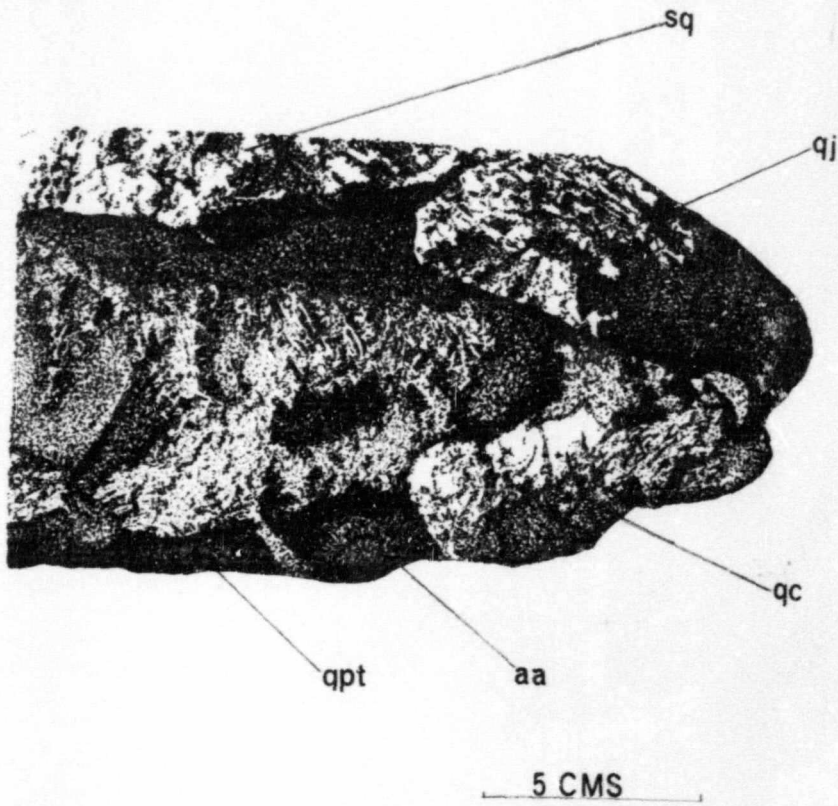
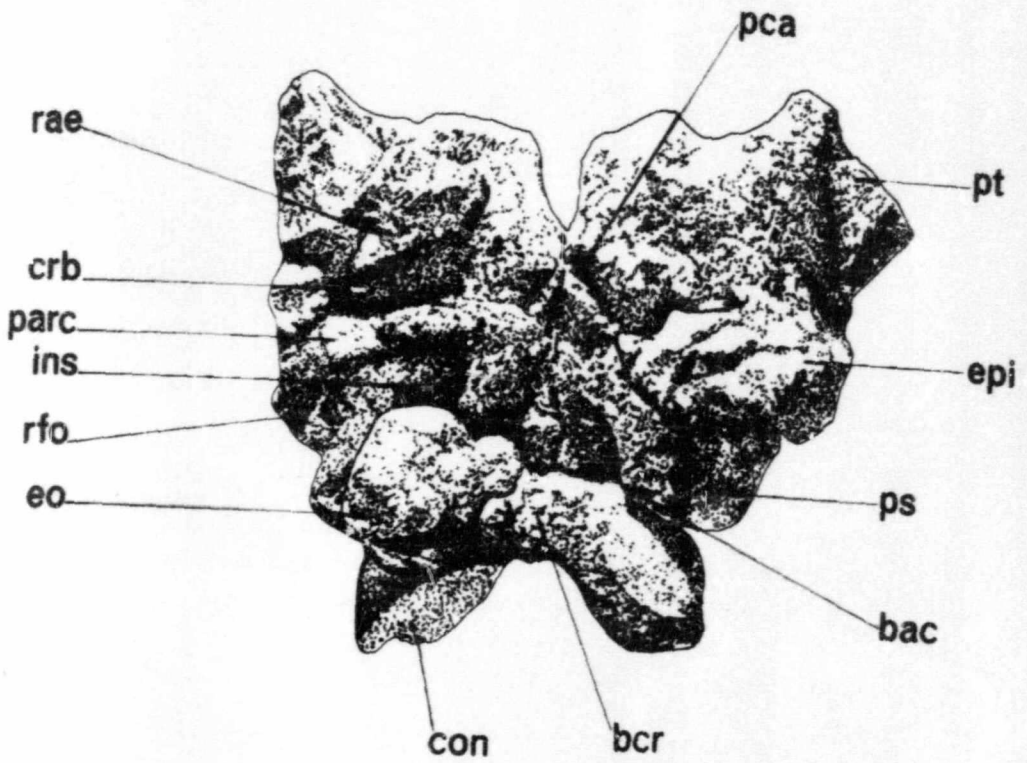


FIG. 12.



5 CMS

FIG. 9.

Ventral view of occipital region of Specimen A.

FIG. 10A.

Median view of left exoccipital of Specimen A.

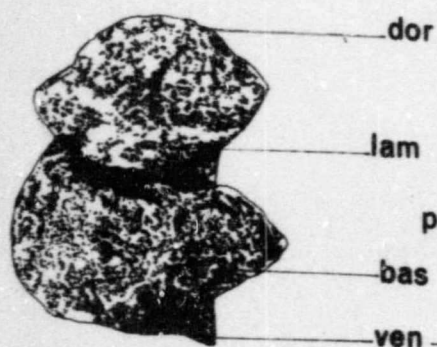
FIG. 10B.

Lateral view of left exoccipital of Specimen A.

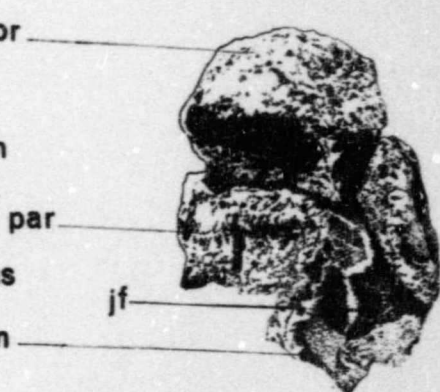
FIG. 10C.

Anterior view of left exoccipital of Specimen A.

FIG. 10 A.



10 B.



10 C.



5 CMS

FIG. 11.

Internal view of quadrate ramus of
pterygoid of Specimen A.

N.B. A distinction of P. pronus is a roughened area of bone on the quadrate ramus of the pterygoid in an internal position adjacent to the quadrate. This appears to have been a continuation on to the pterygoid of the articular surface of the screw-shaped quadrate condyle. (Howie, 1969)

FIG. 12.

Dorsal view of Braincase of Specimen A.

N.B. The right exoccipital is missing.

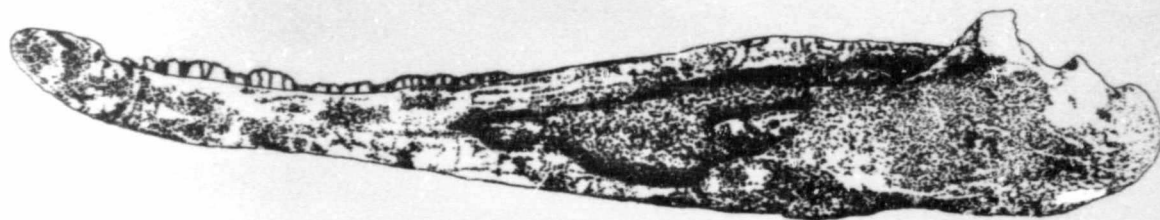
FIG. 13A.

Lower jaw of Specimen A, seen lingually.
(Reversed from left side)

FIG. 13B.

Reconstruction and analysis of lower
jaw of Specimen A, seen lingually.

FIG. 13A.



13B.

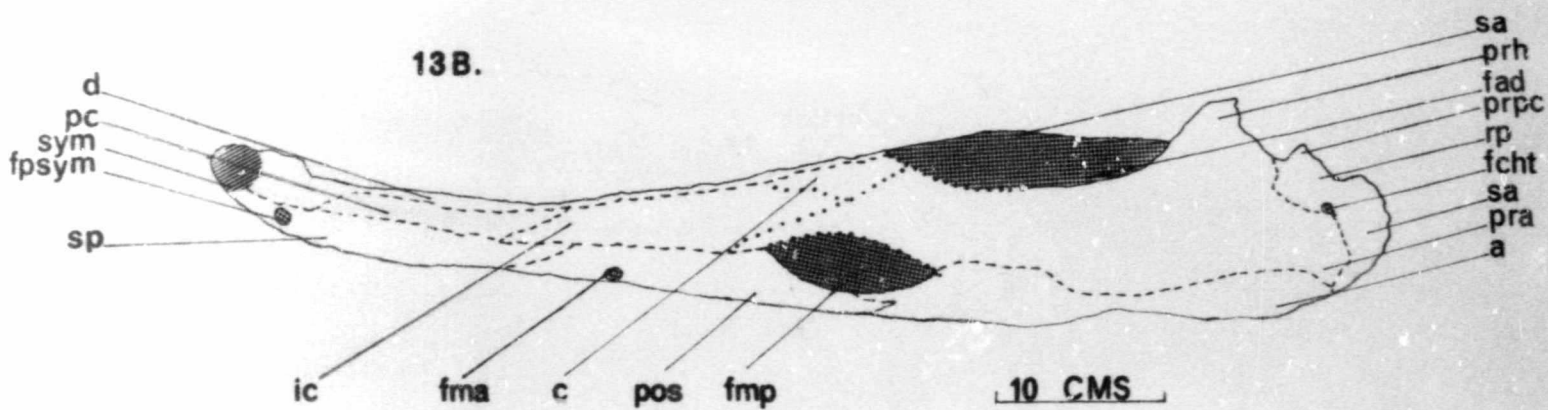


FIG. 13A.

Lower jaw of Specimen A, seen lingually.
(Reversed from left side)

FIG. 13B.

Reconstruction and analysis of lower
jaw of Specimen A, seen lingually.

FIG. 14A.

Lingual view of anterior end of lower
jaw ramus of Specimen A.
(Reversed from left)

FIG. 14B.

Reconstruction and analysis of lingual view of
anterior end of lower jaw ramus of Specimen A.

N.B. The posterior lower end of the bone is
twisted at an acute angle so that the
reconstruction of that area is tentative.

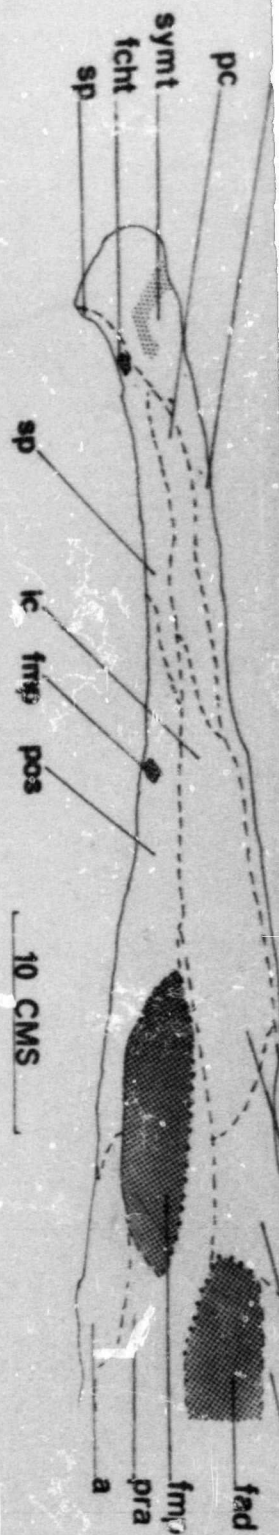
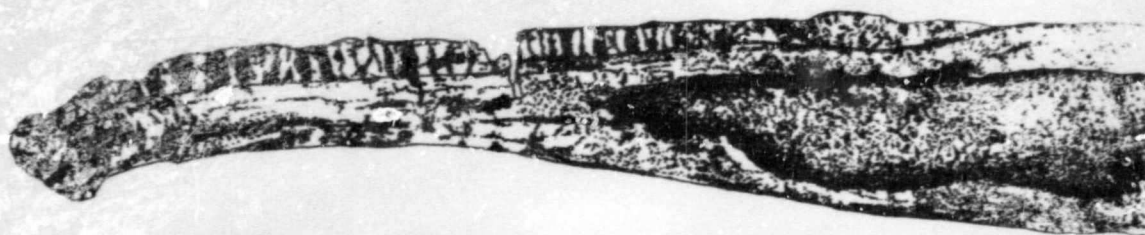


FIG. 14A.



14B.

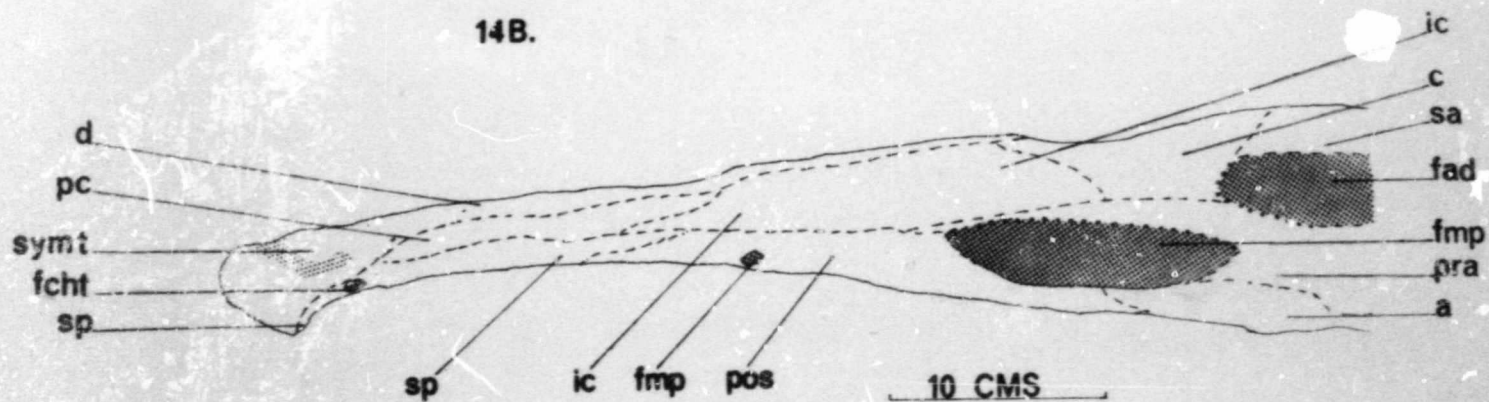


FIG. 14A.

Lingual view of anterior end of lower
jaw ramus of Specimen A.
(Reversed from left)

FIG. 14B.

Reconstruction and analysis of lingual view of
anterior end of lower jaw ramus of Specimen A.

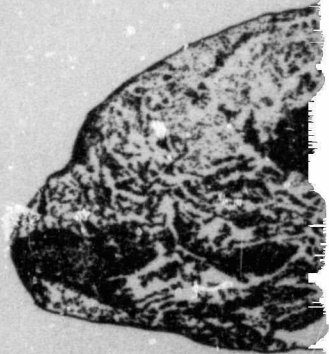
N.B. The posterior lower end of the bone is
twisted at an acute angle so that the
reconstruction of that area is tentative.

FIG. 15A.

Posterior view of left lower jaw of Specimen A.

FIG. 15B.

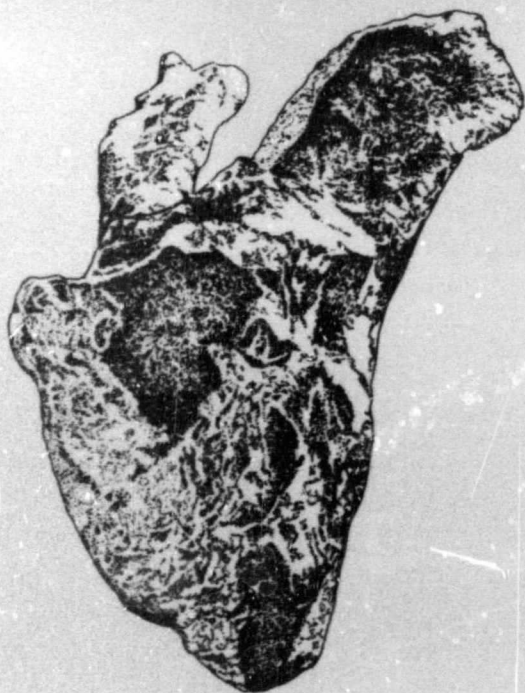
Analysis of posterior view of left lower jaw.



5 CMS



FIG. 15A.



15B.

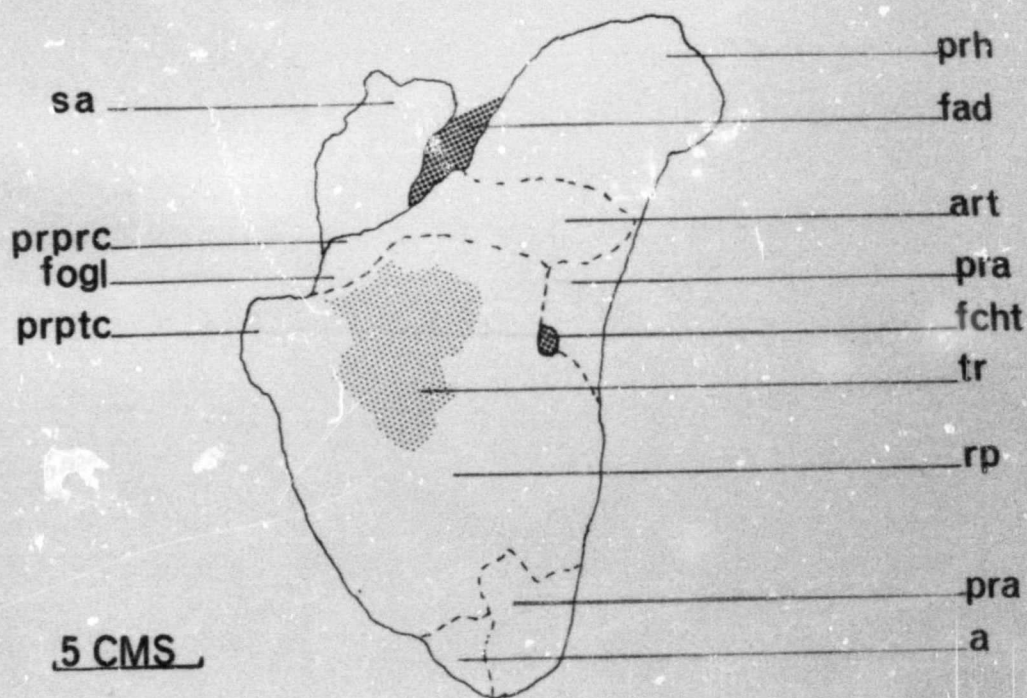


FIG. 15A.

Posterior view of left lower jaw of Specimen A.

FIG. 15B.

Analysis of posterior view of left lower jaw.

FIG. 16A.

Postero-dorsal view of left lower ramus of Specimen A.

FIG. 16B.

Analysis of postero-dorsal view of left
lower ramus of Specimen A.

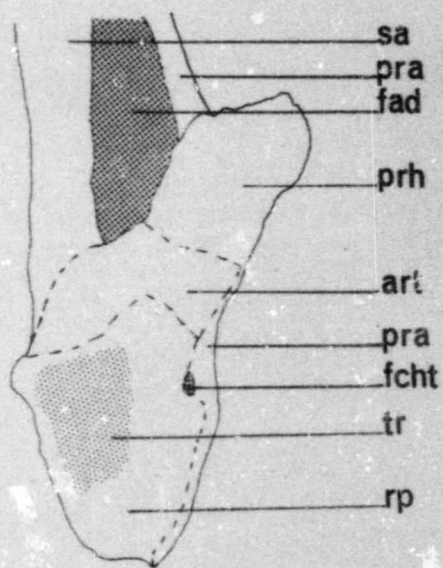
FIG. 16A.



FIG. 16 A.



16B.



5 CMS

of Specimen A.

f left

Author Chernin Sharon

Name of thesis Capitosaurid amphibians from the upper Luangwa Valley, Zambia.

PUBLISHER:

University of the Witwatersrand, Johannesburg

©2013

LEGAL NOTICES:

Copyright Notice: All materials on the University of the Witwatersrand, Johannesburg Library website are protected by South African copyright law and may not be distributed, transmitted, displayed, or otherwise published in any format, without the prior written permission of the copyright owner.

Disclaimer and Terms of Use: Provided that you maintain all copyright and other notices contained therein, you may download material (one machine readable copy and one print copy per page) for your personal and/or educational non-commercial use only.

The University of the Witwatersrand, Johannesburg, is not responsible for any errors or omissions and excludes any and all liability for any errors in or omissions from the information on the Library website.