

CHAPTER 4

The Species Traded

A lexicon of plants traded in the Witwatersrand *umuthi* shops, South Africa

V.L. WILLIAMS*, K. BALKWILL* and E.T.F. WITKOWSKI*

Keywords: families, medicinal plants, plant parts, survey, trade, *umuthi*, vernacular names

ABSTRACT

At least 511 medicinal plant species are traded commercially in 50 Witwatersrand *umuthi* shops. The plants are listed alphabetically by genus and common (vernacular) name. The orthographic vernacular names, as well as the orthographic variations in these names, are incorporated into the list. Annotations include the plant family, the number of *umuthi* shops stocking the species, the language of the common name, and the plant part traded. The plant family in the region which has the highest number of species and infraspecific taxa in trade is Liliaceae *sensu lato.*, followed in descending order by Fabaceae, Asteraceae, Euphorbiaceae and Amaryllidaceae. Approximately 88.6% of the vernacular names are in Zulu. The mean number of *umuthi* shops per species is 12.3, ranging from 1 to 41. Three hundred and fifty three species (69.2%) occur in the four northern provinces, and 23 species are listed as threatened on the Red Data List.

INTRODUCTION

In 1994, a semiquantitative survey of 50 Witwatersrand *umuthi* shops was undertaken. Prior to the survey, no attempt had been made to describe the commercial market for medicinal plants and parts in the region. The dynamics of the medicinal plant trade in Witwatersrand *umuthi* shops have now been quantitatively described in terms of the species used, sources and suppliers of plants, the adequacy of the sample size, the diversity and equitability of species being traded and the probability of certain taxa being utilized based on their availability in the southern African flora and biomes (Williams *et al.* 2000). In addition, that paper lists the species most commonly available in at least two-thirds of the *umuthi* shops on the Witwatersrand. The purpose of this paper is to present a checklist of species in trade on the Witwatersrand. In addition, a list of all orthographic vernacular names and their variants referred to in this study is provided, with cross references to the appropriate botanical names. The list will be useful to researchers wanting to identify species in trade.

METHODS

A stratified random sample of 50 *umuthi* shops was surveyed on the Witwatersrand in 1994. The research participants selected (including traditional healers who owned shops) were proportionately representative of the geographical distribution, ethnicity and gender of the herb traders on the Witwatersrand at the time of the survey (Williams *et al.* 1997). The vernacular names for the plants sold in each *umuthi* shop were recorded—either from a label on the shelf, or from the name cited by the research participant. The language of the plant names was also recorded to aid identification. It was not determined whether the plants sold were used as medicine or for charm purposes.

Forty-three references were used to identify most of the plants (Watt & Breyer-Brandwijk 1932, 1962; Gerstner 1938a, b, 1939a, b, c, 1941a, b; Miller 1941; Ferreira 1949; Watt 1956; Bryant 1966; Hanekom 1967; Stayt 1968; Jacot Guillarmod 1971; Immelman *et al.* 1973; Netshiungani & Van Wyk 1980; Liengme 1981; Netshiungani 1981; Von Breitenbach 1981a, b, 1984, 1986, 1989, 1991; Arnold & Gulumian 1984; Cunningham 1988; Scott-Shaw 1990; Hutchings 1992, 1996; Moll 1992; Veale *et al.* 1992; Pooley 1993; Loxton *et al.* 1994; Hahn 1994; Brandt *et al.* 1995; Estes 1995; Nichols 1995; Van Wyk *et al.* 1997; Kroon 1999). In addition, species were identified from descriptions of aerial plant parts given by the herb traders, or from specimens purchased at the market and identified at the C.E. Moss Herbarium (J), University of the Witwatersrand. An incomplete set of voucher specimens was purchased, and is presently being incorporated into the traditional medicine collection at the Adler Museum of the History of Medicine, University of the Witwatersrand.

Species identification from plant parts recorded in a trade survey is a problem, especially when tracing the plants through their vernacular names in the literature. Errors in identification are sometimes made by the recorders of this information, and there are likely to be citation errors of the vernacular names given by the traders. However, the scientific names allocated to these plants are, for the most part reliable, especially for the names recorded in the Zulu vernacular for which an extensive body of literature exists.

Following species identification, the data were entered into a relational database designed in the program DATAEASE by modifying the herbarium management system of the C.E. Moss Herbarium. This obviated entry of every scientific name encountered. The data capture format was designed specifically for the entry of the survey records, and the data were entered under some of the following fields for each species recorded in an *umuthi* shop, including: 1, genus and species number (Genspec No., following Arnold & De Wet 1993); 2, genus and species; 3, common names; 4, language of the

* Department of Animal, Plant and Environmental Sciences, University of the Witwatersrand, Private Bag 3, WITS 2050, South Africa. MS. received: 1999-02-19.

common name, and 5, trader information and code. Herb traders were given codes denoting the region and order in which they were surveyed, for instance 'JB30' for 'Johannesburg Shop 30'. The number of records entered for the fifty herb traders totalled 6 285.

In the commercial medicinal plant market, the names cited for plants are generally not orthographically correct. Quite often in Zulu, for example, the prefix of the stem word is omitted or shortened. Therefore, to identify plants from Zulu names from some species lists requires searching for stem words that are orthographically or phonetically similar. In order to produce a 'user friendly' list, both the orthographic names and their variants were captured on this database. The correct, or orthographic, form of the vernacular names in this paper was checked by A. Ngwenya from the Natal Herbarium (NH) in Durban.

Following data capture, a complete checklist of all families, genera, species, plant parts, orthographic vernacular names and orthographic variants, was extracted from the database, as well as the number of citation records per species; authors of the botanical names are provided in this list (Appendix 1). Citation records were extracted according to the vernacular names, thus it was not possible to discriminate between the species. In Appendix 1, the number of shops cited is for the applicable vernacular name, not necessarily the precise species (e.g. seven species of *Helichrysum* called *imphepho* are cited as being recorded in 35 shops, as *imphepho* was recorded from 35 shops). The checklist was compared with the Red Data List (Hilton-Taylor 1996a, b, 1997) to compile a list of red data taxa traded medicinally on the Witwatersrand. The checklist was also compared with the flora found in the four northern provinces (Retief & Herman 1997) to examine the extent to which species may be harvested in areas other than KwaZulu-Natal, where most of the harvesting occurs (Williams *et al.* 2000).

RESULTS AND DISCUSSION

Five hundred and eleven species from 328 genera and 119 families were identified as being traded on the Witwatersrand (Appendix 1). The most commonly traded families in terms of the number of genera (in parenthe-

TABLE 1.—Broad floristic analysis of taxa traded on the Witwatersrand

Major families and groups	No. families	No. genera [†]	No. taxa*
Monocotyledonae	11	52	110
Iridaceae		6	8
Amaryllidaceae		6	15
Orchidaceae		7	10
Liliaceae <i>s.l.</i>		23	57
Dicotyledonae	97	263	384
Asclepiadaceae		7	11
Celastraceae		9	13
Rubiaceae		13	14
Euphorbiaceae		14	28
Asteraceae (Compositae)		20	34
Fabaceae (Leguminosae)		28	38
Angiospermae	108	315	494
Gymnospermae	5	6	6
Pteridophyta	6	7	10
Total	119	328	510

[†] only families with ≥ 6 genera are included in this listing.

* including species, subspecies and varieties.

ses), are: Fabaceae (Leguminosae) (28), Liliaceae *sensu lato* (23), Asteraceae (Compositae) (20), Euphorbiaceae (14) and Rubiaceae (13) (Table 1). The largest families traded, in terms of the number of species and infraspecific taxa, are: Liliaceae *s.l.* (57), Fabaceae (Leguminosae) (38), Asteraceae (Compositae) (34), Euphorbiaceae (28) and Amaryllidaceae (15) (Table 1; Figure 1).

A mean of 126 ± 65.9 (SD) species was recorded per *umuthi* shop, ranging from a minimum of 10 species to a maximum of 294 species in a shop (Williams *et al.* 2000). On average, a species was recorded in 12.3 ± 11.3 shops. Seventy eight species were recorded in only one shop, and no species was recorded in more than 42 out of a maximum 50 *umuthi* shops (Williams *et al.* 2000). *Drimia* spp. had the highest recorded frequency of occurrence (82%), followed by *Eucomis autumnalis* and *Scilla natalensis* (78% each) (Williams *et al.* 2000). Thirty six species were found in more than 33 of the shops surveyed.

A comparison with the flora of the four northern provinces (Retief & Herman 1997) shows that 353 of the 510 species (69.2%) are found in the Northern Province, North-West, Gauteng and/or Mpumalanga. A mean of

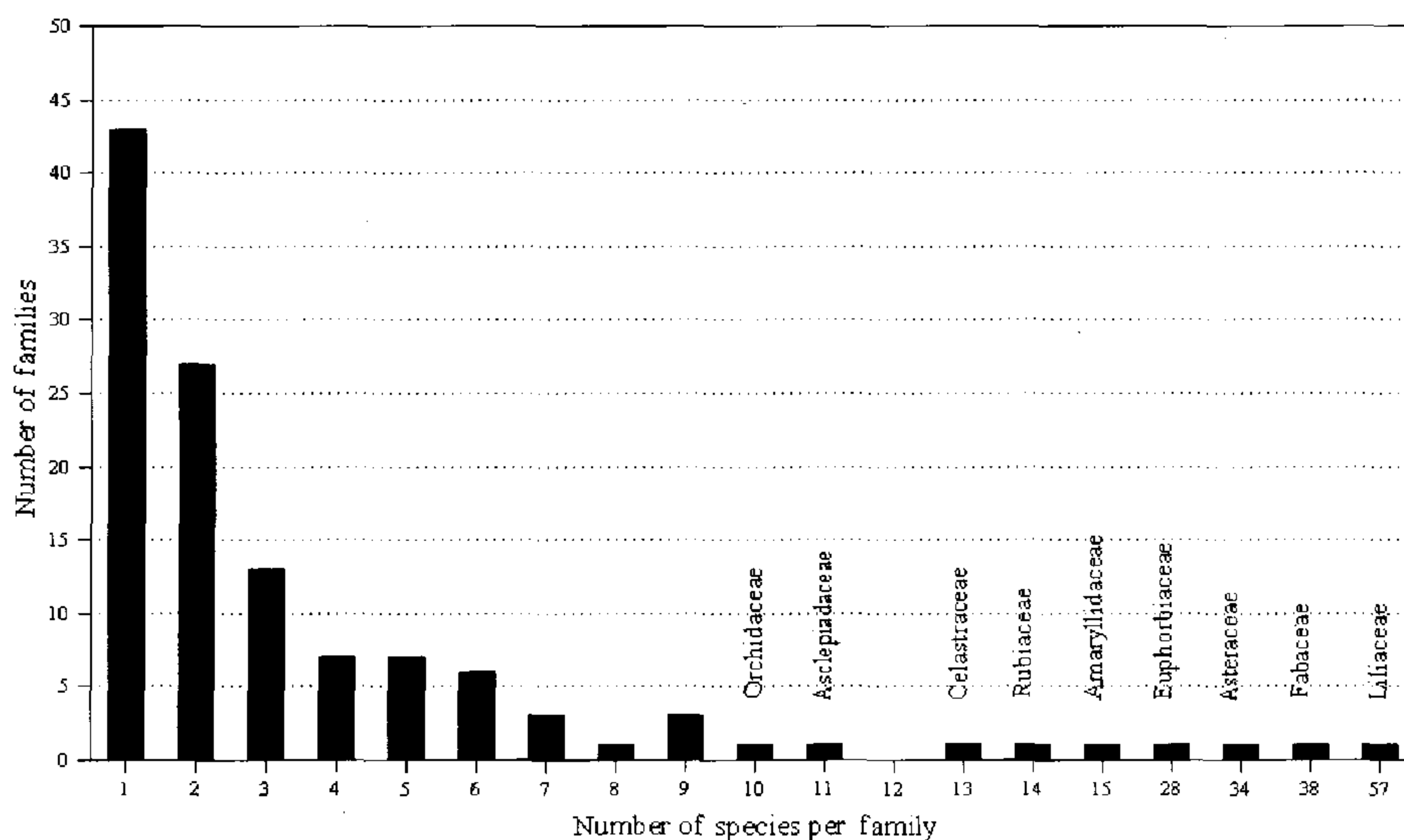


FIGURE 1.—The number of families with particular number of species traded on the Witwatersrand.

27.6% of the species are known to be harvested from this region, compared to 42.1% for KwaZulu-Natal (Williams *et al.* 2000). Therefore, the pressure on plant resources in KwaZulu-Natal could be relieved if commercial gatherers harvested plants in one of the four northern provinces. However, the predominance in utilization, demand and trade of and for Zulu medicinal plants in the region, and the familiarity (or lack thereof) of other ethnic groups with the Zulu plant pharmacopoeia are constraints to accessing and harvesting these resources from elsewhere.

Twenty one species (4.1%) from 17 genera and 16 families represent alien plant species. These species are naturalized in the regions harvested by commercial gatherers. In addition to the exotics harvested in southern Africa, there are at least five plants imported from India by Asian traders.

A total of 23 species (4.7%) traded on the Witwatersrand are threatened according to the Red Data List (Hilton-Taylor 1996a, b; 1997) (Table 2). A further 28 species are on the Red Data List, but are characterized as 'not threatened'. The global conservation status of *Siphonochilus aethiopicus* is listed in Table 2 as 'Not Threatened', even though subsequent corrections to the Red Data List (Hilton-Taylor 1997) have listed the species as extinct in the wild in KwaZulu-Natal. The plant is only obtainable from farmers in KwaZulu-Natal,

or collected in the veld in Mpumalanga and Swaziland. *Schlechterina mitostemmatoides* is also reported to be threatened (A. Hutchings pers. comm.).

The common names of medicinal plants in trade are predominantly in the Zulu vernacular. Eighty-nine percent of the plant names recorded were Zulu (Table 3) (Appendix 2). Despite the inclusion of Sotho, Venda, Shangaan and Swazi traditional healers (who were shop owners) in the survey, the proportion of plant names traded in these languages was low. This shows how traditional healers of other ethnic groups have adapted to the trade and become familiar with the names of plants in the language that dominates the trade, i.e. Zulu.

There is practical value in listing both the orthographic plant names and the orthographic variants in the plant checklist. Firstly, species identification is made easier, and secondly, the checklist provides a guide by suggesting the correct form of vernacular names to be used in the future. The justification for using capitals to separate the prefix from the stem of the noun, while not strictly correct in Zulu, is incorporated in the paper for the benefit of those using this list who are familiar with the structure of Zulu nouns. Most Zulu dictionaries enter nouns under the stem, but for readers not being able to identify the stem it is useful to capitalize it (A. Koopman pers. comm.). It is the authors' experience that this separation makes species identification from vernacular

TABLE 2.—Global conservation status of taxa traded on the Witwatersrand, according to the Red Data List for southern Africa (Hilton-Taylor 1996a, b; 1997)

IUCN Categories*			
Vulnerable (V)	Rare (R)	Insufficiently known (K)	Not threatened (nt)
<i>Encephalartos</i> sp.	<i>Alberta magna</i>	<i>Bowiea volubilis</i>	<i>Agathosma ovata</i>
<i>Gasteria croucheri</i>	<i>Aloe microcantha</i>	<i>Eucomis autumnalis</i>	<i>Ansellia africana</i>
<i>Haworthia limifolia</i>	<i>Bauhinia bowkeri</i>	<i>Scilla natalensis</i>	<i>Blighia unijugata</i>
<i>Warburgia salutaris</i>	<i>Begonia dregei</i>		<i>Boscia foetida</i>
	<i>Begonia homonyma</i>		<i>Bridelia cathartica</i>
	<i>Cassipourea flanaganii</i>		<i>Catha edulis</i>
	<i>Diaphananthe millarii</i>		<i>Celtis mildbraedii</i>
	<i>Euphorbia woodii</i>		<i>Clivia miniata</i>
	<i>Faurea macnaughtonii</i>		<i>Clivia nobilis</i>
	<i>Haworthia fasciata</i>		<i>Commiphora harveyi</i>
	<i>Pellaea rufa</i>		<i>Cyathea dregei</i>
	<i>Sandersonia aurantiaca</i>		<i>Dianthus mooiensis</i>
	<i>Stangeria eriopus</i>		<i>Elaeodendron croceum</i>
	<i>Strophanthus luteolus</i>		<i>Entada rheedii</i>
	<i>Vitellariopsis dispar</i>		<i>Euphorbia bupleurifolia</i>
			<i>Gardenia thunbergia</i>
			<i>Harpagophytum procumbens</i>
			<i>Mondia whitei</i>
			<i>Noltea africana</i>
			<i>Ocotea bullata</i>
			<i>Protea gaguedi</i>
			<i>Schlechterina mitostemmatoides</i>
			<i>Siphonochilus aethiopicus</i> ‡
			<i>Stapelia gigantea</i>
			<i>Strychnos mitis</i>
			<i>Uvaria lucida</i>
			<i>Widdringtonia nodiflora</i>
			<i>Zantedeschia albomaculata</i>

* The old IUCN categories (Davis *et al.* 1986) rather than the new categories (IUCN 1994) were used by Hilton-Taylor because many of the southern African data are still too sparse to apply the new criteria and categories (Hilton-Taylor 1996a).

‡ Hilton-Taylor (1996a) listed *Siphonochilus* as Endangered (E) in KwaZulu-Natal and the former Transvaal and Indeterminate (I) in Swaziland. The overall global conservation status of the species was listed as Not Threatened (nt). A subsequent correction to the conservation status of the species in KwaZulu-Natal listed *Siphonochilus* as Extinct (Ex) in the province (Hilton-Taylor 1997). However, no changes to the global conservation status of the taxon was recommended, hence the species is cited as Not Threatened in the above table.

TABLE 3.—Language of common names

Language of vernacular name	No. of names for unidentified plants	No. of names for identified plants	Total
Zulu (Z)	56	887 (orthographic = 392; variants = 495)	943
Sotho (S)	15	50	65
Venda (V)	9	19	28
Shangaan (Sh)	6	5	11
Tsonga (T)	1	5	6
Xhosa (X)	0	5	5
Tswana (Ts)	0	1	1
English (E)	3	0	3
Afrikaans (A)	0	2	2
Total	90	974	1064

names in the literature easier. Entering the Zulu name alphabetically under both the initial vowel of the prefix and the stem of the noun is also an approach to accommodate a variety of users of the list.

CONCLUSION

The aim of this paper is to provide a checklist of the flora traded in Witwatersrand *umuthi* shops. The value of this list is that it can also be used by researchers in other regions to identify plants used medicinally and traded commercially. Knowing what species are traded commercially is the foundation for identifying taxa threatened by the trade, and comparisons with other regional and national medicinal plant markets.

ACKNOWLEDGEMENTS

We thank: Fanie Mokgaba from the Johannesburg Zoological Gardens for his assistance with the survey; the NRF, Endangered Wildlife Trust and TRAFFIC southern Africa for financial support; C. Prentice and R. Archer from NBI Pretoria for help with updating the nomenclature; A.E. van Wyk, N. Hahn and M. Mander for help with plant identification; A. Hutchings, N. Crouch and A. Koopman for valuable comments on the manuscript; Alfred Ngwenya from the Natal Herbarium (NH) in Durban for providing the correct Zulu format and checking all the vernacular names; and finally the research participants who took part in the survey.

REFERENCES

- ARNOLD, H.-J. & GULUMIAN, M. 1984. Pharmacopoeia of traditional medicine in Venda. *Journal of Ethnopharmacology* 12: 35–74.
- ARNOLD, T.H. & B.C. DE WET, B.C. (eds). 1993. Plants of southern Africa: names and distribution. *Memoirs of the Botanical Survey of South Africa* No. 62. National Botanical Institute, Pretoria.
- BRANDT, H.D., OSUCH, E., MATHIBE, L. & TSIPA, P. 1995. Plants associated with accidentally poisoned patients presenting at Ga-Rankuwa Hospital, Pretoria. *South African Journal of Science* 91: 57–59.
- BRYANT, A.T. 1966. *Zulu medicine and medicine men*. Struik, Cape Town.
- CUNNINGHAM, A.B. 1988. *An investigation of the herbal medicine trade in Natal-KwaZulu*. Investigational Report No. 29, Institute of Natural Resources, University of Natal, Pietermaritzburg.
- DAVIS, S.D., DROOP, S.J.M., GREGERSON, P., HENSON, L., LEON, C.J., VILA-LOBOS, J.L., SYNGE, H. & ZANTOVSKA, J. 1986. *Plants in danger: what do we know?* IUCN, Gland.
- ESTES, L. 1995. *A preliminary list of indigenous medicinal plants and their African names (SiSwati, Tsonga or Zulu)*. Unpublished.
- FERREIRA, F.H. 1949. Bantu customs and legends protect trees. *African Wild Life* 3,1: 59.
- GERSTNER, J. 1938a. A preliminary checklist of Zulu names of plants with short notes. *Bantu Studies* 12: 215–236.
- GERSTNER, J. 1938b. A preliminary checklist of Zulu names of plants with short notes. *Bantu Studies* 12: 321–342.
- GERSTNER, J. 1939a. A preliminary checklist of Zulu names of plants with short notes. *Bantu Studies* 13: 49–64.
- GERSTNER, J. 1939b. A preliminary checklist of Zulu names of plants with short notes. *Bantu Studies* 13: 131–149.
- GERSTNER, J. 1939c. A preliminary checklist of Zulu names of plants with short notes. *Bantu Studies* 13: 307–326.
- GERSTNER, J. 1941a. A preliminary checklist of Zulu names of plants with short notes. *Bantu Studies* 15: 277–301.
- GERSTNER, J. 1941b. A preliminary checklist of Zulu names of plants with short notes. *Bantu Studies* 15: 369–383.
- HAHN, N. 1994. *Tree list of the Soutpansberg*. Fantique, Pretoria.
- HANEKOM, C. 1967. Tradisionele geneeskunde by enkele Noord-Sothostamme. *African Studies* 26,1: 37–42.
- HILTON-TAYLOR, C. 1996a. Red Data List of southern African plants. *Strelitzia* 4.
- HILTON-TAYLOR, C. 1996b. Red Data List of southern African plants. 1. Corrections and additions. *Bothalia* 26: 177–182.
- HILTON-TAYLOR, C. 1997. Red Data List of southern African plants. 2. Corrections and additions. *Bothalia* 27: 195–209.
- HUTCHINGS, A. 1992. *Plants used for some stress-related ailments in traditional Zulu, Xhosa and Sotho medicine*. M.Sc. dissertation, University of Natal, Pietermaritzburg.
- HUTCHINGS, A. 1996. *Zulu medicinal plants: an inventory*. University of Natal Press, Pietermaritzburg.
- IMMELMAN, W.F.E., WICHT, C.L. & ACKERMAN, D.P. 1973. *Our green heritage. The South African book of trees*. Tafelberg.
- IUCN 1994. *IUCN Red List Categories*. IUCN, Gland, Switzerland.
- JACOT GUILLARMOD, A. 1971. *Flora of Lesotho*. Cramer, Lehre.
- KROON, N. 1999. A checklist of the flora of Grid 2627DD, Sasolburg, Free State: springboard for conservation at Wonderwater Strip Mine, Sasol Coal. *PlantLife Supplementary Vol. 1,1*: 1–36.
- LIENGME, C.A. 1981. Plants used by the Tsonga people of Gazankulu. *Bothalia* 13: 501–518.
- LOXTON, VENN & ASSOCIATES. 1994. *Mitigation options: traditional and medicinal plants*. Driekoppies Dam Valuation and Resettlement Program. Report for the Department of Home Affairs, Kangwane. LVA Report No. 100. Loxton, Venn and Associates, Johannesburg.
- MILLER, O.B. 1941. Native names in use in Swaziland for trees, shrubs and other plants. *The Journal of the South African Forestry Association* 6: 88–97.
- MOLL, E.J. 1992. *Trees of Natal*. Ecolab Trust, University of Cape Town, Cape Town.
- NETSHIUNGANI, E.N. 1981. Notes on the uses of indigenous trees in Venda. *Journal of Dendrology* 1,1 & 2: 12–17.
- NETSHIUNGANI, E.N. & VAN WYK, A.E. 1980. Mutavhasindi—mysterious plant from Venda. *Veld & Flora* 66: 87–90.
- NICHOLS, G. 1995. *Cross reference of botanical names to Zulu names*. Unpublished.
- POOLEY, E. 1993. *The complete field guide to trees of Natal, Zululand and Transkei*. Natal Flora Publications Trust, Durban.
- RETIEF, E. & HERMAN, P.P.J. 1997. Plants of the northern provinces of South Africa: keys and diagnostic characters. *Strelitzia* 6.
- SCOTT-SHAW, C.R. (ed.). 1990. *A directory of medicinal plants traded in Natal*. Natal Parks Board, Pietermaritzburg.
- STAYT, H.A. 1968. *The Bavenda*. Cass Library of African Studies, General Publication No. 58. Frank Cass, London.
- VEALE, D.J.H., FURMAN, K.I. & OLIVER, D.W. 1992. South African traditional herbal medicines used during pregnancy and childbirth. *Journal of Ethnopharmacology* 36: 185–191.
- VAN WYK, B.-E., VAN OUDTSHOORN, B. & GERICKE, N. 1997. *Medicinal plants of South Africa*. Briza Publications, Pretoria.
- VON BREITENBACH, F. 1981a. Standard names of trees in southern Africa. Part I: South Sotho tree names. *Journal of Dendrology* 1: 18–28.
- VON BREITENBACH, F. 1981b. Standard names of trees in southern Africa. Part II: Venda tree names. *Journal of Dendrology* 1: 84–94.
- VON BREITENBACH, F. 1984. Standard names of trees in southern Africa. Part III: North Sotho tree names. *Journal of Dendrology* 4: 33–41.

- VON BREITENBACH, F. 1986. Standard names of trees in southern Africa. Part V: Zulu tree names. *Journal of Dendrology* 6: 46–57.
- VON BREITENBACH, F. 1989. Standard names of trees in southern Africa. Part VI: Xhosa tree names. *Journal of Dendrology* 12: 15–22.
- VON BREITENBACH, F. 1991. Standard names of trees in southern Africa. Part VII: Setswana tree names. *Journal of Dendrology* 13: 29–35.
- WATT, J. M. 1956. Magic and trees. *Trees of South Africa* 8,1: 3–15.
- WATT, J.M. & BREYER-BRANDWIJK, M.G. 1932. *The medicinal and poisonous plants of southern Africa*. Livingstone, Edinburgh.
- WATT, J.M. & BREYER-BRANDWIJK, M.G. 1962. *The medicinal and poisonous plants of southern and eastern Africa*, edn 2. Livingstone, London.
- WILLIAMS, V.L., BALKWILL, K. & WITKOWSKI, E.T.F. 1997. *Muthi traders on the Witwatersrand, South Africa—an urban mosaic*. *South African Journal of Botany* 63: 378–381.
- WILLIAMS, V.L., BALKWILL, K. & WITKOWSKI, E.T.F. 2000. Unravelling the commercial market for medicinal plants and plant parts on the Witwatersrand, South Africa. *Economic Botany* 54: 310–327.

APPENDIX 1.—CHECKLIST OF TAXA TRADED MEDICINALLY ON THE WITWATERSRAND

Taxa are arranged alphabetically according to genus and species. After the author(s) of species name, the sequence of annotation is as follows:

plant family;

number of herb traders stocking the species, maximum of 50 herb traders;

vernacular name(s): orthographic/correct Zulu names are in *italics*;

language of vernacular name: Z = Zulu, S = Sotho, V = Venda, Sh = Shangaan, T = Tswana, Ts = Tsonga, X = Xhosa, Sw = Swazi, E = English, A = Afrikaans or combination/variation thereof;

plant part traded: bk = bark, bb = bulb/tuber/corm, fl = flower, fr = fruit, l = leaf, rt = root, sd = seed, st = stem, wpl = whole plant.

*exotic taxa, including naturalized taxa.

+Apiaceae = Umbelliferae; Asteraceae = Compositae; Clusiaceae = Guttiferae; Fab. = Fabaceae = Leguminosae; Lamiaceae = Labiatae; Poaceae = Graminae.

Abrus precatorius L. subsp. **africanus**, Verdc., Fab.+/Papilionoideae, 2
imkoka (Z) sd; *umKhokha* (Z) sd

Acacia

caffra (Thunb.) Willd., Fab.+/Mimosoideae, 6

mthole (Z) bk; *umTholo* (Z) bk

karroo, Hayne, Fab.+/Mimosoideae, 2

umuNga (Z) bk

robusta Burch.

subsp. **clavigera** (E.Mey.) Brenan, Fab.+/Mimosoideae, 1

umgamazi (Z) bk; umkomasi (Z) bk; *umNgamanzi* (Z) bk

subsp. **robusta**, Fab.+/Mimosoideae, 1

umgamazi (Z) bk; umkomasi (Z) bk; *umNgamanzi* (Z) bk

sieberiana DC. var. **woodii** (Burt Davy) Keay & Brenan, Fab.+/Mimosoideae, 2

mkhamba (Z) bk; *umKhamba* (Z) bk

xanthophloea Benth., Fab.+/Mimosoideae, 35

kanyakude (Z) bk; mkanyakude (Z) bk; *umKhanyakude* (Z) bk

Acalypha

glandulifolia Buchinger ex Meisn., Euphorbiaceae, 8

bonisele (Z) wpl; gibonisele (Z) wpl; ibonisele (Z) wpl; *unGibonisele* (Z) wpl

peduncularis E.Mey. ex Meisn., Euphorbiaceae, 4

sununundu (Z) rt; *uSununundu* (Z) rt

punctata Meisn., Euphorbiaceae, 4

sununundu (Z) rt; *uSununundu* (Z) rt

schinzii Pax, Euphorbiaceae, 4

sununundu (Z) wpl; *uSununundu* (Z) wpl

villicaulis Hochst., Euphorbiaceae, 22

byere (Sh) rt; mpendulo (Z) rt; *umPendulo* (Z) rt

Achyrocline stenoptera (DC.) Hilliard & B.L.Burt, Asteraceae*, 35

iMphepho (Z) l/st; mpepo (Z) l/st; mphepho (Z) l/st

Achyroopsis avicularis (E.Mey. ex Moq.) Cooke & Wright, Amaranthaceae, 11

bohloholo (Z) wpl; *iBohloholo* (Z) wpl; isigiba-nyongo (Z) wpl; *isiNamasenyongo* (Z) wpl; sinama-senyonga (Z) wpl; siphaseenyuko (Z) wpl; *umSiphawenyoka* (Z) wpl

Acokanthera

oblongifolia (Hochst.) Codd, Apocynaceae, 6

hlungunyembe (Z) l/rt; *iHlungunyembe* (Z) l/rt; nhlungunyembe (Z) l/rt;

oppositifolia (Lam.) Codd, Apocynaceae, 9

hlungunyembe (Z) l/rt; *iHlungunyembe* (Z) l/rt; khwangu (Z) l/rt;

mgwangu (Z) l/rt; mhlungunyembe (Z) l/rt; mkwangu (Z) l/rt;

nhlungunyembe (Z) l/rt; *umKhwangu* (Z) l/rt

Acorus calamus L.*, Araceae, 20

iKalamuzi (Z) rt; kalmoes (Z) rt

Acridocarpus

natalitius Juss.

var. **linearifolius** Launert, Malpighiaceae, 28

mabophe (Z) rt; mahbhope (Z) rt; *uMabopha* (Z) rt

var. **natalitius**, Malpighiaceae, 28

mabophe (Z) rt; mahbhope (Z) rt; *uMabopha* (Z) rt

Adenia gummifera (Harv.) Harms var. **gummifera**, Passifloraceae, 34

impendewa shaye (Z) st; *imPindamshaye* (Z) st; mpindamshaye (Z) st;

phindamshye (Z) st; pindamshaye(Z) st

Adenostemma

caffra DC., Asteraceae*, 15

mahogwe (Z) l/st; *uMahogwe* (Z) l/st

viscosum J.R. & G.Forst., Asteraceae*, 15

mahogwe (Z) l/st; *uMahogwe* (Z) l/st

Afzelia quanzensis Welw., Fab.+/Caesalpinioideae, 3

dlavusa (Z) bk; inkehli (Z) bk; mdlavusa (Z) bk; nkehle (Z) bk; *umDlavuza* (Z) bk

Agapanthus

africanus (L.) Hoffm., Liliaceae s.l., 20

ubane (Z) rt; *uBani* (Z) rt; uhlakahla (Sw) rt

campanulatus Leighton, Liliaceae s.l., 10

ubane (Z) rt; *uBani* (Z) rt

praecox Willd. subsp. **orientalis** (Leighton) Leighton, Liliaceae s.l., 10

ubane (Z) rt; *uBani* (Z) rt

Agathosma ovata (Thunb.) Pillans, Rutaceae, 17

mahirisaka, white (Z/E) rt; maisaka, white (Z/E) rt; mayisake, white (Z/E) rt; mysaka, white (Z/E) rt; *uMahesakomhlope* (Z) rt

Alberta magna E.Mey., Rubiaceae, 3

mchumane (Z) bk; *umCumane* (Z) bk

Albizia adianthifolia (Schumach.) W.Wight, Fab.+/Mimosoideae, 33

katankawu (Z) bk; mbhando (V) bk; mdlanlothi (Z) bk; mgadankawu (Z) bk; mhlandloti (X) bk; mkadankawu (Z) bk; mslangoti (Z) bk; solo (Z) bk; *umGadankawu* (Z) bk; *umHladloti* (X) bk; *umKadankawu* (Z) bk; *uSolo* (Z) bk; zinhla (Z) bk

Albuca

fastigiata (L.f.) Dryand, Liliaceae s.l., 9

maphipha ntelezi (Z) bb; *uMaphiphintelezi* (Z) bb

nelsonii N.E.Br., Liliaceae s.l., 9

maphipha ntelezi (Z) bb; *uMaphiphintelezi* (Z) bb

Albuca (cont.)**setosa** Jacq., Liliaceae *s.l.*, 20*inGcino* (Z) bb; *ncino* (Z) bb; *ngcina* (Z) bb; *ngcino* (Z) bb**Alepidea****amatymbica** Eckl. & Zeyh. var. **amatymbica**, Apiaceae⁺, 34*iKhathazo* (Z) rt; *kataza* (Z) rt; *kathazo* (Z) rt**longifolia** E.Mey., Apiaceae⁺, 34*iKhathazo* (Z) rt; *kataza* (Z) rt; *kathazo* (Z) rt**pilifera** Weim., Apiaceae⁺, 1

lesokwana (S) rt

setifera N.E.Br., Apiaceae⁺, 1

lesokwana (S) rt

Aloe**aristata** Haw., Liliaceae *s.l.*, 16mathithibala (Z) wpl; *uMathithibala* (Z) wpl**maculata** All., Liliaceae *s.l.*, 5*cena* (Z) l; *iCena* (Z) l**micrantha** Haw., Liliaceae *s.l.*, 1

sekgopha (S) l

sp., Liliaceae *s.l.*, 5*cena* (Z) l; *iCena* (Z) l; *inqgene* (Z) l; *marobadibogale* (S) l**Andrachne ovalis** (Sond.) Müll.Arg., Euphorbiaceae, 19*mbeza* (Z) rt; *uMbesa* (Z) rt; *uMembeza* (Z) rt**Anemone****caffra** Eckl. & Zeyh., Ranunculaceae, 14*manzemnyama* (Z) rt; *uManzamnyama* (Z) rt**fanninii** Harv. ex Mast., Ranunculaceae, 14*manzemnyama* (Z) rt; *uManzamnyama* (Z) rt**Ansellia africana** Lindl., Orchidaceae, 11*imFeyenkawu* (Z) rt**Anthospermum rigidum** Eckl. & Zeyh. subsp. **pumilum** (Sond.) Puff.
Rubiaceae, 19*mlomo mnandi* (Z) rt; *umLomomnandomncane* (Z) rt**Apodytes dimidiata** E.Mey. ex Arn. subsp. **dimidiata**, Icacinaceae, 4*dakane* (Z) rt; *indakane* (Z) rt; *uDakane* (Z) rt**Aptenia cordifolia** (L.f.) Schwant. var. **cordifolia**, Mesembryanthemaceae, 4*bohloholo* (Z) wpl; *iBohloholo* (Z) wpl**Argyrobium tuberosum** Eckl. & Zeyh., Fab.* / Papilionoideae, 2*tsoetla-e-nyenyane* (S) rt; *tswetlane* (S) rt**Artemisia afra** Jacq. ex Willd., Asteraceae⁺, 19*lengana* (S) l/st; *hlonyane* (Z) l/st; *mhlonyane* (Z) l/st; *umHlonyane* (Z) l/st**Asclepias****cucullata** (Schltr.) Schltr., Asclepiadaceae, 9*delawena* (Z) l/st; *delunina* (Z) l/st; *uDelunina* (Z) l/st**spp.**, Asclepiadaceae, 23*iShongwe* (Z) rt; *shongwe* (Z) rt**Asparagus****africanus** Lam., Liliaceae *s.l.*, 19*isiGoba* (Z) rt**asparagoides** (L.) W.Wight, Liliaceae *s.l.*, 20*buthe* (Z) rt; *iButha* (Z) rt**falcatus** L., Liliaceae *s.l.*, 19*isiGoba* (Z) rt**laricinus** Burch., Liliaceae *s.l.*, 19*buthe* (Z) rt; *iButha* (Z) rt**ramosissimum** Baker, Liliaceae *s.l.*, 20*buthe* (Z) rt; *iButha* (Z) rt**setaceus** (Kunth) Jessop, Liliaceae *s.l.*, 19*buthe* (Z) rt; *iButha* (Z) rt**sp.**, Liliaceae *s.l.*, 19*isiGoba* (Z) rt**virgatus** (Baker) Oberm., Liliaceae *s.l.*, 19*buthe* (Z) rt; *iButha* (Z) rt**Aspilia natalensis** (Sond.) Wild, Asteraceae⁺, 4*pamapuce* (Z) l/st; *phamaphuce* (Z) l/st; *ubuHlungwana* (Z) l/st; *uPhamephuce* (Z) l/st**Aster bakerianus** Burt Davy ex C.A.Sm., Asteraceae⁺, 30*dlutjane* (Z) rt; *dlutshani* (Z) rt; *idlutshane* (Z) rt; *lutjane* (Z) rt; *uDlutshana* (Z) rt**Balanites maughamii** Sprague, Balanitaceae, 28*gobandlovu* (Z) bk; *ipamba* (Z) bk; *iPhamba* (Z) bk; *uGobandlovu* (Z) bk**Baphia racemosa** (Hochst.) Baker, Fab.* / Papilionoideae, 1*isiFithi* (Z) bk**Barringtonia racemosa** (L.) Roxb., Lecythidaceae, 6*mhuluka* (Z) rt; *mululuka* (Z) rt; *uMululuka* (Z) rt**Basella paniculata** Volkens, Basellaceae, 1*ndaba-ugehlele* (Z) l/st; *unDabingehlele* (Z) l/st**Bauhinia bowkeri** Harv., Fab.* / Caesalpinoideae, 17*dlandlovu* (X) rt; *mdlandlovu* (X) rt; *umDlandlovu* (X) rt**Begonia****dregei** Otto & Dietr., Begoniaceae, 3*iDlula* (Z) rt**homonyma** Steud., Begoniaceae, 3*iDlula* (Z) rt**Behnia reticulata** (Thunb.) Didr., Liliaceae *s.l.*, 18*isiGoba* (Z) rt; *iZaza* (Z) rt**Belamcanda spp.**, Iridaceae, 1*inDawoluthi* (Z) rt; *ndauluti* (Z) rt**Berchemia discolor** (Klotzsch) Hemsl., Rhamnaceae, 7*madlozana* (Z) rt; *mahlozane* (Z) rt; *uMadlozana* (Z) rt**Berkheya****multijuga** (DC.) Roessl., Asteraceae⁺, 5*iKhakhasi* (Z) rt; *ugashi* (Z) rt; *ukashi* (Z) rt**onopordifolia** (DC.) O.Hoffm. ex Burt Davy var. **onopordifolia**, Asteraceae⁺, 1*mohato* (S) rt**Bersama****lucens** (Hochst.) Szyszyl., Melianthaceae, 32*isiNdiyandiya* (Z) bk; *sindiyandiya* (Z) bk**stayneri** E.Phillips, Melianthaceae, 32*indiyaza* (Z) bk; *isiNdiyandiya* (Z) bk; *ndiyaza* (Z) bk; *sindiyandiya* (Z) bk; *unDiyaza* (Z) bk**swinnyi** E.Phillips, Melianthaceae, 32*indiyaza* (Z) bk; *isiNdiyandiya* (Z) bk; *ndiyaza* (Z) bk; *sindiyandiya* (Z) bk; *unDiyaza* (Z) bk**tysoniana** Oliv., Melianthaceae, 32*indiyaza* (Z) bk; *isiNdiyandiya* (Z) bk; *ndiyaza* (Z) bk; *sindiyandiya* (Z) bk; *unDiyaza* (Z) bk**Blighia unijugata** Baker, Sapindaceae, 2*iDiebendlovu* (Z) bk; *mhlabele* (Z) bk; *ndiebendlovu* (Z) bk; *umHlabele* (Z) bk; *umHlabeleloweqolo* (Z) bk**Boophane disticha** (L.f.) Herb., Amaryllidaceae, 27*iNcotho* (Z) bb; *incoto* (Z) bb; *ngoto* (Z) bb; *ngubozohlonya* (Z) bb**Boscia****albitrunca** (Burch.) Gilg & Gilg-Ben., Capparaceae, 14*inYokiziphinda* (Z) rt; *mvithi* (Z) rt; *nogimpinda* (Z) rt; *nyokaspinda* (Z) rt; *umnyokiziphinda* (Z) rt; *umvete* (Z) rt; *umVithi* (Z) rt**foetida** Schinz subsp. **rehmanniana** (Pest.) Toelken, Capparaceae, 10*mvithi* (Z) rt; *umvete* (Z) rt; *umVithi* (Z) rt**Bowiea volubilis** Harv. ex Hook.f., Liliaceae *s.l.*, 32*gibisile* (Z) bb; *uGibisila* (Z) bb**Brachylaena discolor** DC. subsp. **discolor** var. **discolor**, Asteraceae⁺, 23*isiPhahluka* (Z) l/st; *spahluka* (Z) l/st; *spatluga* (Z) l/st; *umPhahla* (Z) l/st**Brackenridgea zanguebarica** Oliv., Ochnaceae, 5*mutavhatsindi* (V) rt; *ntabazimbi* (V) rt; *tabazimbi* (V) rt; *thabatsindi* (V) rt**Bridelia****cathartica** Bertol.f., Euphorbiaceae, 3*gazine* (Z) bk; *ngazine* (Z) bk; *unGazine* (Z) bk**micrantha** (Hochst.) Baill., Euphorbiaceae, 20*hlalamakwababa* (Z) bk; *mutshutshunga* (V) bk; *umHlalamagwababa* (Z) bk; *umhlalimakwaba* (Z) bk**Brunsvigia sp.**, Amaryllidaceae, 35*maime* (Z) bb; *mayime* (Z) bb; *uMayime* (Z) bb**Buddleja salviifolia** (L.) Lam., Loganiaceae, 2*iLoshana* (Z) rt; *loshana* (Z) rt

Bulbine

aloooides (L.) Willd., Liliaceae *s.l.*, 2
iBhucu (Z) wpl; *ibuco* (Z) wpl; *ibuqu* (Z) wpl
asphodeloides (L.) Willd., Liliaceae *s.l.*, 2
iBhucu (Z) wpl; *ibuco* (Z) wpl; *ibuqu* (Z) wpl
frutescens (L.) Willd., Liliaceae *s.l.*, 2
iBhucu (Z) wpl; *ibuco* (Z) wpl; *ibuqu* (Z) wpl
latifolia (L.f.) Roem. & Schult., Liliaceae *s.l.*, 2
iBhucu (Z) wpl; *ibuco* (Z) wpl; *ibuqu* (Z) wpl

Burchellia bubalina (L.f.) Sims, Rubiaceae, 2
intshwalabenyoni (Z) bk; *iqongqo* (Z) bk; *tshwalabenyoni* (Z) bk;
umqonqo (Z) bk; *uQongqo* (Z) bk; *uTshwalabenyoni* (Z) bk

Buxus

macowanii Oliv., Buxaceae, 1
galagala (X) l/fl; *umGalagala* (X) l/fl; *umPhicamagama* (Z) l/fl
natalensis (Oliv.) Hutch., Buxaceae, 1
galagala (X) l/fl; *umGalagala* (X) l/fl

Cadaba natalensis Sond., Capparaceae, 4
amangwe, black (Z/E) bk; *amaNgwamnyama* (Z) bk

Callilepis laureola DC., Asteraceae*, 27
hlamvu (Z) rt; *iHlamvu* (Z) rt; *imPila* (Z) rt; *mpila* (Z) rt

Calodendrum capense (L.f.) Thunb., Rutaceae, 29
memezi, white (Z/E) bk; *uMemezomhlope* (Z) bk

Canthium inerme (L.f.) Kuntze, Rubiaceae, 2
umVuthwemini (Z) rt; *vutwamini* (Z) rt

Capparis

brassii DC., Capparaceae, 15
cwaningi (Z) rt; *iQwaningi* (Z) rt; *mabusane* (Z) rt; *moapatladi* (S) rt;
moopatladi (S) rt; *uMabusane* (Z) rt
tomentosa Lam., Capparaceae, 15
cwaningi (Z) rt; *iQwaningi* (Z) rt; *mabusane* (Z) rt; *moapatladi* (S) rt;
moopatladi (S) rt; *uMabusane* (Z) rt

Carpobrotus edulis (L.) L.Bolus, Mesembryanthemaceae, 8
iKhambilamabulawo (Z) l/st

Casearia gladiiformis Mast., Flacourtiaceae, 1
juluka (Z) rt; *mjuluka* (Z) rt; *umJuluka* (Z) rt

Cassia abbreviata Oliv. subsp. **beareana** (Holmes) Brenan, Fab.*
 Caesalpinioideae, 1
nomanyama (Sh) bk

Cassine peragua L. subsp. **peragua**, Celastraceae, 4
maqadini (X) bk

Cassipourea

flanaganii (Schinz) Alston, Rhizophoraceae, 29
memezi, red (Z/E) bk; *uMemeziobomvu* (Z) bk
gerrardii (Schinz) Alston, Rhizophoraceae, 29
memezi, red (Z/E) bk; *mqonga* (X) bk; *uMemeziobomvu* (Z) bk; *um-Qonga* (X) bk

Catha edulis (Vahl) Forssk. ex Endl., Celastraceae, 2
mhlwazi (Z) bk/l; *shikwane* (S) bk/l; *umHlwazi* (Z) bk/l

Catunaregam spinosa (Thunb.) Tirveng. subsp. **spinosa**, Rubiaceae, 5
maqadani (Z) fr; *uMaqadini* (Z) fr

Celosia trigyna L., Amaranthaceae, 8
uVelabahleke (Z) wpl; *velabahleka* (Z) wpl

Celtis mildbraedii Engl., Ulmaceae, 3
uZinhla (Z) bk; *zinhla* (Z) bk

Cephalaria humilis (Thunb.) Roem. & Schult., Dipsacaceae, 22
dira-ga-dibone (S) rt; *mpheabonwe* (S) rt; *mpikayiboni* (Z) rt; *pigabone* (Z) rt; *pigayibone* (Z) rt; *pikayiboni* (Z) rt; *raadeboni* (S) rt;
uMpikayiboni (Z) rt

Cheilanthes hirta Swartz, Adiantaceae, 11
iNkomankoma (Z) rt/l; *khomankhoma* (Z) rt/l; *nkomankoma* (Z) rt/l

Chenopodium

ambrosioides L. *, Chenopodiaceae, 5
hlahlabadimo (S) l/st; *insukumbili* (Z) l/st; *ntsukumbili* (Z) l/st;
slaslabadiem (S) l/st; *sukumbili* (Z) l/st; *tlhatlhabadimo* (T) wpl;
uNsukumbili (Z) l/st
sp., Chenopodiaceae, 1
phate-ca-ngaka (S) rt; *phateyangaka* (S) rt

Chlorophytum comosum (Thunb.) Jacq., Liliaceae *s.l.*, 5
iPhamba (Z) wpl; *pamba* (Z) wpl; *phamba* (Z) wpl

Chrysanthemoides monilifera (L.) Norl. subsp. **monilifera**, Astera-
 ceae*, 1
inKupheyana (Z) wpl; *nqapulwane* (Z) wpl

Cinnamomum

camphora (L.) J.Presl*, Lauraceae, 31
loselina (Z) bk; *roselina* (Z) bk; *uLoselina* (Z) bk; *uRoselina* (Z) bk
zeylancium Nees*, Lauraceae, 4
mondi (Z) bk; *uMondi* (Z) bk

Cissampelos torulosa E.Mey. ex Harv., Menispermaceae, 2
kalimele (Z) l/st; *uKhalimele* (Z) l/st

Clausena anisata (Willd.) Hook.f. ex Benth., Rutaceae, 3
nukelamabiba (Z); *umnukela mbiba* (Z); *umNukelambiba* (Z); *unukam-biba* (Z)

Clivia

miniata (Lindl.) Regel var. **miniata**, Amaryllidaceae, 35
maime (Z) wpl; *mayime* (Z) wpl; *uMayime* (Z) wpl
nobilis Lindl., Amaryllidaceae, 35
maime (Z) wpl; *mayime* (Z) wpl; *uMayime* (Z) wpl
spp., Amaryllidaceae, 35
maime (Z) wpl; *mayime* (Z) wpl; *uMayime* (Z) wpl

Clutia

hirsuta E.Mey. ex Sond., Euphorbiaceae, 2
ngwedlane (Z) l/rt; *uNgwaleni* (Z) l/rt
platyphylla Pax & K.Hoffm., Euphorbiaceae, 2
ngwedlane (Z) l/rt; *uNgwaleni* (Z) l/rt
pulchella L., Euphorbiaceae, 2
ngwedlane (Z) l/rt; *uNgwaleni* (Z) l/rt
spp., Euphorbiaceae, 1
umBethe (Z) rt

Coddia rudis (E.Mey. ex Harv.) Verdc., Rubiaceae, 1
dondweni (Z) rt; *umDondwani* (Z) rt

Combretum

caffrum (Eckl. & Zeyh.) Kuntze, Combretaceae, 6
mdubu (Z) rt; *umDubu* (Z) rt
erythrophyllum (Burch.) Sond., Combretaceae, 6
mdubu (Z) rt; *umDubu* (Z) rt
hereroense Schinz, Combretaceae, 6
mdubu (Z) rt; *umDubu* (Z) rt
kraussii Hochst., Combretaceae, 6
mdubu (Z) rt; *umDubu* (Z) rt

Commiphora

africana (A.Rich.) Engl., Burseraceae, 1
uMinyela (Z) bk
harveyi (Engl.) Engl., Burseraceae, 1
uMinyela (Z) bk
woodii Engl., Burseraceae, 1
umDewehlati (Z) bk

Convolvulus sagittatus Thunb., Convolvulaceae, 15
uVimbukhalo (Z) rt; *vimbokhalo* (Z) rt

Corbichonia decumbens (Forssk.) Exell, Aizoaceae, 4
iNyongwane (Z) rt; *nyongwane* (Z) rt

Corchorus

asplenifolius Burch., Tiliaceae, 34
bangalala (Z) rt; *uBangalala* (Z) rt
confusus Wild, Tiliaceae, 10
bonisele (Z) rt; *gibonisele* (Z) rt; *ibonisele* (Z) rt; *unGibonisele* (Z) rt

Cotula anthemoides L., Asteraceae*, 1
hlonyane (Z) l/st; *mhlonyane* (Z) l/st; *umHlonyane* (Z) l/st

Crabbea hirsuta Harv., Acanthaceae, 23
musa (Z) rt; *ntantanyana* (Z) rt; *uMusa* (Z) rt

Crinum

bulbispermum (Burm.f.) Milne-Redh. & Schweick., Amaryllidaceae, 12
mduze (Z) bb; *umduze* (Z) bb; *umNduze* (Z) bb
delagoense I.Verd., Amaryllidaceae, 12
mduze (Z) bb; *umduze* (Z) bb; *umNduze* (Z) bb
macowanii Baker, Amaryllidaceae, 12
mduze (Z) bb; *umduze* (Z) bb; *umNduze* (Z) bb

Crinum (cont.)

moorei *Hook.f.*, Amaryllidaceae, 12
mduze (Z) bb; umduze (Z) bb; *umNduze* (Z) bb
sp., Amaryllidaceae, 12
mduze (Z) bb; umduze (Z) bb; *umNduze* (Z) bb

Crocasmia

aurea (*Pappe ex Hook.*) *Planch.*, Iridaceae, 12
dwendweni (Z) bb; mlunge (Z) bb; udwendweni (Z) bb; *umLunge* (Z) bb; *unDwendweni* (Z) bb
paniculata (*Klatt*) *Goldblatt*, Iridaceae, 12
dwendweni (Z) bb; mlunge (Z) bb; udwendweni (Z) bb; *umLunge* (Z) bb; *unDwendweni* (Z) bb

Crotalaria

globifera *E.Mey.*, Fab./Papilionoideae, 12
bhubhubhu (Z) rt; bububu (Z) rt; *uBhubhubhu* (Z) rt
spp., Fab./Papilionoideae, 30
uVelabahleke (Z) rt; velabahleka (Z) rt

Croton

gratissimus *Burch.* var. **subgratissimus** (*Prain*) *Burt Davy*, Euphorbiaceae, 31
iLethi (Z) bk; mahlabekufeni (Z) bk; mahlabufeni (Z) l/st; *uMahlabekufeni* (Z) bk
sylvaticus *Hochst.*, Euphorbiaceae, 30
umaHlabekufeni (Z) bk; dubanhlosi (Z) bk; indumbadlozi (Z) bk; indumbahlozi (Z) bk; mahlabekufeni (Z) bk; mahlabufeni (Z) bk; minya (Z) bk; moolologa (S) bk; mzilanyoni (Z) bk; ndumbadlozi (Z) bk; *uMinya*(Z) bk; *umZilanyoni* (Z) bk

Cryptocarya

latifolia *Sond.*, Lauraceae, 25
mdlangwenya (Z) bk; mkhondweni (Z) bk; ndlangwenya (Z) bk; *uMdlangwenya* (Z) bk; *umKhondweni* (Z) bk
myrtifolia *Stapf*, Lauraceae, 25
mkondweni (Z) bk; *umKhondweni* (Z) bk

Cunonia capensis *L.*, Cunoniaceae, 5

lulama (Z) bk; malulek (Z) bk; mlulama (Z) bk; *umLulamomkhulu* (Z) bk

Cupressus **sp.***, Cupressaceae, 19

abaNqonqosi (Z) bk; abaqonqosi (Z) rt

Curtisia dentata (*Burm.f.*) *C.A.Sm.*, Cornaceae, 19

inJundumlahleni (Z) bk; jundu (Z) bk; mlahleni (Z) bk; mlahlenisefile (Z) bk; pepelangen (Z) bk; *umLahleni* (Z) bk; *umLahlenisefile* (Z) bk; umlatleni (Z) bk; *uPhephelelangeni* (Z) bk;

Cussonia spicata *Thunb.*, Araliaceae, 4

msenge (Z) bk/st; musenzhe (V) bk/st; *umSenge* (Z) bk/st; usenge (Z) bk/st

Cyanotis speciosa (*L.f.*) *Hassk.*, Commelinaceae, 1

makhotigobile (Z) rt; *uMakhothigobile* (Z) rt

Cyathea dregei *Kunze*, Cyathaceae, 11

iNkomankoma (Z) rt; khomankhoma (Z) rt; nkomankoma (Z) rt

Cyathula **sp.**, Amaranthaceae, 2

uBulawu (Z) bk

Cynium racemosum *Benth.*, Scrophulariaceae, 6

hlabalangane (Z) rt; shlabahlangane (Z) rt; *uHlabahlangane* (Z) rt

Cymbopogon

excavatus (*Hochst.*) *Stapf ex Burt Davy*, Poaceae⁺, 4
isiQunga (Z) l/st/rt; siqunga (Z) l/st/rt
marginatus (*Steud.*) *Stapf ex Burt Davy*, Poaceae⁺, 4
isiQunga (Z) l/st/rt; siqunga (Z) l/st/rt
plurinodis (*Stapf*) *Stapf ex Burt Davy*, Poaceae⁺, 4
isiQunga (Z) l/st/rt; siqunga (Z) l/st/rt
spp., Poaceae⁺, 19
ihozawoza (Z) l/st; *iWozawoza* (Z) l/st; sukasamba (Z) l/st; sukasihamba (Z) l/st; *uSukasihambe* (Z) l/st; wozawoza (Z) l/st
validus (*Stapf*) *Stapf ex Burt Davy*, Poaceae⁺, 4
isiQunga (Z) l/st/rt; siqunga (Z) l/st/rt

Cyrtorchis arcuata (*Lindl.*) *Schltr.*, Orchidaceae, 2

ipamba (Z) rt; *iPhamba* (Z) rt; pamba (Z) rt; phamba (Z) rt; phamba (Z)

Dalbergia obovata *E.Mey.*, Fab./Papilionoideae, 1

umZungulu (Z) st

Datura

metel *L.**, Solanaceae, 1
iLoyi (Z) l/st
stramonium *L.**, Solanaceae, 1
iLoyi (Z) l/st

Deinbollia oblongifolia (*E.Mey. ex Arn.*) *Rudlk.*, Sapindaceae, 31

iPhengulula (Z) rt; lulama (Z) bk; mlulama (Z) bk; pengulula (Z) rt; phengulula (Z) rt; *umLulamaomkhulu* (Z) bk

Dianthus

basuticus *Burt Davy*, Caryophyllaceae, 4
hlokwaletsela (S) wpl; hlokwana-latesela (S) wpl; ilokwalatsela (S) wpl; tlokwana la tsela (S) wpl
crenatus *Thunb.*, Caryophyllaceae, 2
iNingizimu (Z) wpl; mningizimu (Z) wpl
mooiensis *F.N.Williams*, Caryophyllaceae, 32
chambeswe (Z) wpl; chanibeswe (Z) wpl; hlokwaletsela (S) wpl; hlok-wana-latesela (S) wpl; ilokwalatsela (S) wpl; tjanibeswe (Z) wpl; tlokwana la tsela (S) wpl; tshanibezwe (Z) wpl; tshokha-lasile (S) wpl; uTshanibezwe (Z) wpl; utyanibsw (Z) wpl
zeyheri *Sond.*
subsp. **natalensis** *Hooper*, Caryophyllaceae, 2
iNingizimu (Z) wpl; mningizimu (Z) wpl
subsp. **zeyheri**, Caryophyllaceae, 2
iNingizimu (S) wpl; mningizimu (S) wpl

Diaphananthe millarii (*Bolus*) *H.P.Linder*, Orchidaceae, 4

ipamba (Z) rt; *iPhamba* (Z) rt; pamba (Z) rt; phamba (Z) rt

Dicoma anomala *Sond.*, Asteraceae⁺, 7

hloenya (S) rt; hlwenya (Z) rt; *iNyongwane* (Z) rt; nyongwane (Z) rt

Dierama pendulum (*L.f.*) *Baker*, Iridaceae, 11

dwendweni (Z) bb; *isiDwa* (Z) bb; udwendweni (Z) bb; *unDwendweni* (Z) bb

Dietes iridioides (*L.*) *Sweet ex Klatt*, Iridaceae, 27

isiGqiki-sikatokoloshe (Z) l/st; isiqunga sikatokoloshe (Z) l/st; siqunga si tokoloshe (Z) l/st

Dioscorea

dregeana (*Kunth*) *T.Durand & Schinz* var. **hutchinsonii** *Burkill ined.*, Dioscoreaceae, 21
dakwa (Z) rt; mokamba (V) rt; sitshetsane (V) rt; *uDakwa* (Z) rt
rupicola *Kunth*, Dioscoreaceae, 1
iMpiyampinya (Z) rt; mpiyampinya (Z) rt
sylvatica (*Kunth*) *Eckl.*, Dioscoreaceae, 28
iNgwevu (Z) rt; sekolopatas (S) rt; skilpad (A) rt; skulptati (A) rt; *uFudu* (Z) rt

Diospyros

galpinii (*Hiern*) *De Winter*, Ebenaceae, 26
dodemnyama (Z) rt; *iMpishimpishi* (Z) rt; *inDodemnyama* (Z) rt; ndodemnyama (Z) rt
villosa (*L.*) *De Winter* var. **villosa**, Ebenaceae, 26
dodemnyama (Z) rt; *inDodemnyama* (Z) rt; ndodemnyama (Z) rt

Disa **spp.**, Orchidaceae, 3

hlamvu (Z) rt; *iHlamvu* (Z) rt

Dombeya rotundifolia (*Hochst.*) *Planch.* var. **rotundifolia**, Sterculiaceae, 20

ilukuluku (Z) bk; *inHliziyonkulu* (Z) bk; nhliziyonkulu (Z) bk

Drimia

elata *Jacq.*, Liliaceae *s.l.*, 41
isiKlenama (Z) bb; ndongwana zimbomvana (Z) bb; sekanama (S) bb; skanama (S) bb; *unDonganazibomvana* (Z) bb
robusta *Baker*, Liliaceae *s.l.*, 41
isiKlenama (Z) bb; ndongwana zimbomvana (Z) bb; sekanama (S) bb; skanama (S) bb; *unDonganazibomvana* (Z) bb

Dryopteris

athamantica (*Kunze*) *Kuntze*, Aspidiaceae, 11
iNkomankoma (Z) rt; khomankhoma (Z) rt; nkomankoma (Z) rt
inaequalis (*Schldl.*) *Kuntze*, Aspidiaceae, 11
iNkomankoma (Z) rt; khomankhoma (Z) rt; nkomankoma (Z) rt

Dumasia villosa *DC.* var. **villosa**, Fab./Papilionoideae, 15

kalimela (Z) l/st; *uKhalimele* (Z) l/st

Eclipta prostrata (*L.*) *L.**, Asteraceae⁺, 10

iPhamephu (Z) wpl; phamaphuce (Z) wpl; pamapuce (Z) wpl

Ehretia rigida (Thunb.) Druce, Boraginaceae, 2
umHlele (Z) rt; *umKele* (Z) rt

Ekebergia capensis Sparrm., Meliaceae, 26
imanaye (Z) bk; *isiManaye* (Z) bk; mahlunzidintaba (Z) bk; mnyamati (Z) bk; simanaye (Z) bk; *uMathunzini*(Z) bk; *uMathunzini-wezintaba* (Z) bk; *umNyamathi* (Z) bk

Elaeodendron
croceum (Thunb.) DC., Celastraceae, 15
isiNama (Z) bk; *isiThundu* (Z) bk; sahlula-amanye (Z) bk; sahlula-manye (Z) bk; sehlulamanye (Z) bk; sithundu (Z) bk; snama (Z) bk; *umBovana* (Z) bk; *uSahlulamanye* (Z) bk; *uSehlulamanye* (Z) bk
transvaalense (Burt Davy) R.H.Archer, Celastraceae, 37
gwavuma (Z) bk; *iNgwavuma* (Z) bk; mulumananma (V) bk; ngwavuma (Z) bk

Elephantorrhiza elephantina (Burch.) Skeels, Fab.+/Mimosoideae, 28
dabu (Z) rt (lt); *inTolwane* (Z) rt (lt); mdabu (Z) rt (lt); modabo (S) rt (lt); mosehlana (S) rt (lt); ntolwane(Z) rt (lt); *umDabu* (Z) rt (lt)

Embelia ruminata (E.Mey. ex A.DC.) Mez, Myrsinaceae, 1
binini (Z) rt; *isiBhinini* (Z) rt

Encephalartos sp., Zamiaceae, 2
isiGqikisomkhovu (Z) fl/st; *isiKotshonkovu* (Z) fl/st; kotsonkovu (Z) fl/st

Entada rheedii Spreng., Fab.+/Mimosoideae, 12
inTindili (Z) sd; ntindili (Z) sd

Equisetum ramosissimum Desf., Equisetaceae, 2
iShobalehashi (Z) rt; iShobalenyathi (Z) rt; shoba lenyathi (Z) rt

Eragrostis plana Nees, Poaceae⁺, 10
mvithi (Z) rt; umvete (Z) rt; *umVithi* (Z) rt

Eriosema
cordatum E.Mey., Fab.+/Papilionoideae, 13
qontsi (Z) rt; *uQonsi* (Z) rt
salignum E.Mey., Fab.+/Papilionoideae, 7
bangalala (Z) rt; *iQonsi* (Z) rt; qontsi (Z) rt; *uBangalala* (Z) rt; *uQonsi* (Z) rt

Eriospermum
cooperi Baker, Liliaceae *s.l.*, 5
iNcamashela (Z) rt; ncamashela (Z) rt
luteo-rubrum Baker, Liliaceae *s.l.*, 9
mathinta (Z) rt; matinta (Z) rt; *uMathinta* (Z) rt
mackenii (Hook.f.) Baker, Liliaceae *s.l.*, 21
iNsihlansula (Z) rt; ntsulansula (Z) rt
ornithogaloides Baker, Liliaceae *s.l.*, 5
iNcamashela (Z) rt; ncamashela (Z) rt
spp., Liliaceae *s.l.*, 21
iNsulansula (Z) rt; ntsulansula (Z) rt

Erythrophleum lasianthum Corbishley, Fab.+/Caesalpinioideae, 27
khwangu (Z) bk; mgwangu (Z) bk; mkhwangu (Z) bk; *umKhwangu* (Z) bk

Eucalyptus sp. *, Myrtaceae, 16
dlavusa (Z) bk; dlebe (Z) bk; *imPisikayihlangulwa* (Z) bk; mdelebe (Z) bk; mhlavusa (Z) bk; mpiskayi hlangulwa (Z) bk; mslavusa (Z) bk; *umDlavusa* (Z) bk; *umDlebe* (Z) bk

Euclea
crispa (Thunb.) Guerke subsp. **crispa**, Ebenaceae, 1
iDungamuzi (Z) rt
divinorum Hiern, Ebenaceae, 9
mhlangu (Z) rt; mhlangu (Z) rt; mshekisani (Z) rt; sakchaan (Z) rt; shekisane (Z) rt; *umHlangula* (Z) rt; *umShekisane* (Z) rt
natalensis A.DC., Ebenaceae, 2
iNkunzemnyama (Z) rt; nkunzi, black (Z/E) rt; nkunzi-emnyama (Z) rt; nzimane (Z) rt
spp., Ebenaceae, 2
dungamuzi (Z) rt; *iDungamuzi* (Z) rt
undulata Thunb., Ebenaceae, 7
mshekisani (Z) rt; sakchaan (Z) rt; shekisane (Z) rt; *umShekisane* (Z) rt

Eucomis
autumnalis (Mill.) Chitt., Liliaceae *s.l.*, 39
mathunga (Z) bb; *uMathunga* (Z) bb
bicolor Baker, Liliaceae *s.l.*, 10
imBola (Z) bb; mbola (Z) bb; *imbola* (Z) bb

Eulophia
cucullata (Afzel. ex Sw.) Steud., Orchidaceae, 6
amabelejongosi (Z) rt; dwendweni (Z) rt; udwendweni (Z) rt; mabelejongosi (Z) rt; *uMabelejongosi* (Z) rt; *unDwendweni* (Z) rt
spp., Orchidaceae, 6
amabelejongosi (Z) rt; dwendweni (Z) rt; udwendweni (Z) rt; mabelejongosi (Z) rt; *uMabelejongosi* (Z) rt; *unDwendweni* (Z) rt

Euphorbia
bupleurifolia Jacq., Euphorbiaceae, 2
kalmasan (Z) wpl; *inKamamasane* (Z) wpl
natalensis Bernh., Euphorbiaceae, 2
kalmasan (Z) wpl; *inKalamasane* (Z) wpl
pulvinata Marl., Euphorbiaceae, 2
kalmasan (Z) wpl; *inKamamasane* (Z) wpl
woodii N.E.Br., Euphorbiaceae, 20
iNhlehle (Z) wpl; sihlenhle (Z) wpl

Faurea
macnaughtonii E.Phillips, Proteaceae, 11
isiSefu (Z) bk; sefo (Z) bk; sisefo (Z) bk
saligna Harv., Proteaceae, 11
isiSefu (Z) bk; sefo (Z) bk; sisefo (Z) bk

Ficus sur Forssk., Moraceae, 4
iNtombi kayibhinci (Z) bk; mkiwane (Z) bk; ntombi-kayibhinci (Z) bk; *umKhiwane* (Z) bk

Foeniculum vulgare Mill. *, Apiaceae⁺, 13
iMbozisa (Z) l/st; *iMboziso* (Z) l/st; mbozisa (Z) l/st; mboziso (Z) l/st

Garcinia
gerrardii Harv. ex Sim, Clusiaceae⁺, 8
mbinda (Z) bk; *umBinda* (Z) bk
livingstonei T.Anderson, Clusiaceae⁺, 13
isaphulo (Z) bk; mphimbi (Z) bk; mupimbi (V) bk; saphulo (Z) bk; sepula (Z) bk; *umPhimbi* (Z) bk

Gardenia
thunbergia Thunb., Rubiaceae, 1
umValasangweni (Z) rt; velasangweni (Z) rt
volkensii K.Schum. subsp. **spatulifolia** (Stapf & Hutch.) Verdc., Rubiaceae, 1
umValasangweni (Z) rt; velasangweni (Z) rt

Gasteria croucheri (Hook.f.) Baker, Liliaceae *s.l.*, 1
imPundu (Z) l; pundu (Z) l

Gerbera piloselloides (L.) Cass., Asteraceae⁺, 8
moya-wezwe (Z) st; *uMoyawezwe* (Z) st

Gerrardina foliosa Oliv., Flacourtiaceae, 31
iLethi (Z) bk; lulama (Z) bk; maleleka (X) bk; mlulama bk; *umaLuleka* (Z) bk; *umLulama* (Z) bk

Gladiolus
dalenii Van Geel, Iridaceae, 12
dwendweni (Z) bb; udwendweni (Z) bb; *unDwendweni* (Z) bb
sericeo-villosus Hook.f. subsp. **sericeo-villosus**, Iridaceae, 12
dwendweni (Z) bb; *isiDwa* (Z) bb; mlunge (Z) bb; udwendweni (Z) bb; *umLunge* (Z) bb; *unDwendweni* (Z) bb

Gloriosa superba L., Liliaceae *s.l.*, 3
hlamvu (Z) rt; *iHlamvu* (Z) rt

Glycyrrhiza glabra L. *, Fab.+/Papilionoideae, 19
mlomo mnandi (Z) rt; *umLomomnandomncane* (Z) rt

Gnidia
burchellii (Meisn.) Gilg, Thymelaeaceae, 13
dikili (Z) rt; *isiDikili* (Z) rt; mongadi (S) rt; sidikili (Z) rt
cuneata Meisn., Thymelaeaceae, 13
dikili (Z) rt; *isiDikili* (Z) rt; mongadi (S) rt; sidikili (Z) rt
kraussiana Meisn. var. **kraussiana**, Thymelaeaceae, 24
dikili (Z) rt; *isiDikili* (Z) rt; selengwe (Z) rt; sidikili (Z) rt; silawengwe (Z) rt; *umSilawengwe* (Z) rt
spp., Thymelaeaceae, 14
dikili (Z) rt; *isiDikili* (Z) rt; sidikili (Z) rt

Gomphocarpus
fruticosus (L.) W.T.Aiton, Asclepiadaceae, 2
msingala salugazi (Z) rt; singala salugazi (Z) rt; *uSingalwesalukazi* (Z) rt
physocarpus E.Mey., Asclepiadaceae, 2
msingala salugazi (Z) rt; singala salugazi (Z) rt; *uSingalwesalukazi* (Z) rt

Greyia sutherlandii *Hook. & Harv.*, Greyiaceae, 1
ubande (Z) bk; *umBande* (Z) bk

Gunnera perpensa *L.*, Haloragaceae, 31
gobo (Z) rt; gopho (Z) rt; tangazane (S) rt; *uGobho* (Z) rt; ugopo (Z) rt

Gymnosporia buxifolia (*L.*) *Szyszl.*, Celastraceae, 34
bangalala (Z) rt; *uBangalala* (Z) rt

Haemanthus

albiflos *Jacq.*, Amaryllidaceae, 2
uZeneke (Z) bb; zaneke (Z) bb
coccineus *L.*, Amaryllidaceae, 2
uZeneke (Z) bb; zaneke (Z) bb
deformis *Hook.f.*, Amaryllidaceae, 2
uZeneke (Z) bb; zaneke (Z) bb
spp., Amaryllidaceae, 2
uZeneke (Z) bb; zaneke (Z) bb

Halleria lucida *L.*, Scrophulariaceae, 1
tshwalabenyon (S) l/st

Harpagophytum procumbens (*Burch.*) *DC. ex Meisn.*, Pedaliaceae, 3
mziwalapho ungaphi (Z) sd; sumuso owalapha wayongaphi (Z) fr/rt;
umZiwalaphungaphi (Z) fr/rt

Harpephyllum caffrum *Bernh. ex Krauss.*, Anacardiaceae, 11
gwenya (Z) bk; ngwenya (Z) bk; *umGwenya* (Z) bk

Haworthia

fasciata (*Willd.*) *Haw.*, Liliaceae *s.l.*, 16
mathithibala (Z) wpl; *uMathithibala* (Z) wpl
limifolia *Marloth*, Liliaceae *s.l.*, 16
mathithibala (Z) wpl; *uMathithibala* (Z) wpl

Helichrysum

acutatum *DC.*, Asteraceae⁺, 9
uZangume (Z) rt; zangume (Z) rt
cymosum (*L.*) *D.Don* subsp. **calvum** *Hilliard*, Asteraceae⁺, 35
iMphepho (Z) l/st; mpepo (Z) l/st; mphepho (Z) l/st
decorum *DC.*, Asteraceae⁺, 35
iMphepho (Z) l/st; mpepo (Z) l/st; mphepho (Z) l/st
epapposum *Bolus*, Asteraceae⁺, 35
iMphepho (Z) l/st; mpepo (Z) l/st; mphepho (Z) l/st
gymnocomum *DC.*, Asteraceae⁺, 35
iMphepho (Z) l/st; mpepo (Z) l/st; mphepho (Z) l/st
natalitium *DC.*, Asteraceae⁺, 35
iMphepho (Z) l/st; mpepo (Z) l/st; mphepho (Z) l/st
nudifolium (*L.*) *Less.*, Asteraceae⁺, 35
iMphepho (Z) l/st; mpepo (Z) l/st; mphepho (Z) l/st
odoratissimum (*L.*) *Sweet.*, Asteraceae⁺, 35
iMphepho (Z) l/st; mpepo (Z) l/st; mphepho (Z) l/st

Helinus integrifolius (*Lam.*) *Kuntze*, Rhamnaceae, 12
bhuhubhu (Z) rt; bububu (Z) rt; *uBhubhubhu* (Z) rt

Heliophila subulata *Burch. ex DC.*, Brassicaceae, 8
moya wezwe (Z) rt; *uMoyawezwe* (Z) rt

Hermannia depressa *N.E.Br.*, Sterculiaceae, 7
phate-ea-ngaka (S) rt; phateyangaka (S) rt

Heteropyxis natalensis *Harv.*, Myrtaceae, 1
thathayane (T) rt; *umKhuze* (Z) rt

Hippobromus pauciflorus (*L.f.*) *Radlk.*, Sapindaceae, 25
fazi-tetayo (Z) rt; iqhume (Z) rt; *isiPhahluka* (Z) rt; lilathile (Z) rt;
mfazi-othethayo (X) rt; mfazitetio (Z) rt; qhume (Z) rt; spahlu-
ka (Z) rt; spatluga (Z) rt; ucume (Z) rt; *umFazothethayo* (Z) rt;
uQhume (Z) rt; *uTiye* (Z) rt

Hippocratea longipetiolata *Oliv.*, Celastraceae, 34
bangalala (Z) rt; *uBangalala* (Z) rt

Homalium dentatum (*Harv.*) *Warb.*, Flacourtiaceae, 1
iDlebeyendlovu (Z) bk; ndlewendlovu (Z) bk

Hydnora africana *Thunb.*, Hydnoraceae, 21
mafumbuka (Z) rt; *uMavumbuka* (Z) rt

Hypericum aethiopicum *Thunb.* subsp. **aethiopicum**, Clusiaceae⁺, 7
isiVumelwane (Z) wpl; ntsukumbili (Z) wpl; sukumbili (Z) wpl;
unSukumbili (Z) wpl; *uNtsukumbili* (Z) wpl; vumelewana (Z)
wpl

Hypoxis

colchicifolia *Baker*, Hypoxidaceae, 33
iLabatheka (Z) bb; *iLabathekelimnyama* (Z) bb; labateka (Z) bb
gerrardii *Baker*, Hypoxidaceae, 4
ikomfe (Z) bb; iNkomfe (Z) bb
hemerocallidea *Fisch. & C.A.Mey.*, Hypoxidaceae, 4
ikomfe (Z) bb; *iNkomfe* (Z) bb
sp., Hypoxidaceae, 33
iLabatheka (Z) bb; labatheka (Z) bb

Ilex mitis (*L.*) *Radlk.* var. **mitis**, Apocynaceae, 21
iPhuphuma (Z) st; *isiDumo* (Z) bk; phuphuma (Z) st; sdumo (Z) bk;
sedumo (T) bk; sidumo (Z) bk; *tshidzungu* (Sh) bk

Ipomoea

crassipes *Hook.*, Convolvulaceae, 15
uVimbukhalo (Z) rt; vimbokhalo (Z) rt
spp., Convolvulaceae, 22
bhoqo (Z) rt; boqo (Z) rt; *uBoqo* (Z) rt; *uBhoqo* (Z) rt

Jatropha

hirsuta *Hochst.*, Euphorbiaceae, 6
godide (Z) rt; *uGodide* (Z) rt
zeyheri *Sond.*, Euphorbiaceae, 6
godide (Z) rt; *uGodide* (Z) rt

Justicia capensis *Thunb.*, Acanthaceae, 11
iKhokhela (Z) rt; khokhela (Z) rt; kokela (Z) rt

Kalanchoe

crenata (*Andr.*) *Haw.*, Crassulaceae, 15
mahogwe (Z) l/st; *uMahogwe* (Z) l/st
sp., Crassulaceae, 35
mvuthuza (Z) l/st; *umVuthuza* (Z) l/st; vuthuza (Z) l/st

Kigelia africana (*Lam.*) *Benth.*, Bignoniaceae, 13
mvongoti (Z) fr; *umVongothi* (Z) fr

Kniphofia uvaria (*L.*) *Oken*, Liliaceae *s.l.*, 4
iCacane (Z) rt

Knowltonia bracteata *Harv. ex Zahlbr.*, Ranunculaceae, 35
mvuthuza (Z) rt; *umVuthuza* (Z) rt; vuthuza (Z) rt

Kohautia amatymbica *Eckl. & Zeyh.*, Rubiaceae, 3
umFanozacile (Z) rt

Ledebouria

cooperi (*Hook.f.*) *Jessop*, Liliaceae *s.l.*, 1
cubudwana (Z) bb; *iCubudwana* (Z) bb
ovatifolia (*Baker*) *Jessop*, Liliaceae *s.l.*, 1
cubudwana (Z) bb; *iCubudwana* (Z) bb
revoluta (*L.f.*) *Jessop*, Liliaceae *s.l.*, 1
cubudwana (Z) bb; *iCubudwana* (Z) bb

Lichtensteinia interrupta (*Thunb.*) *Sond.*, Apiaceae⁺, 4
iMbozisa (Z) rt; kapalanga (Z) rt; mbozisa (Z) rt; mkapalanga (Z) rt;
umKhalaphanga (Z) rt

Lippia javanica (*Burm.f.*) *Spreng.*, Verbenaceae, 6
msuzwane (Z) l/st; suzwane (Z) l/st; *umSuzwane* (Z) l/st; usuzwane (Z)
l/st

Lithospermum cinereum *DC.*, Boraginaceae, 1
moshala-shuping (S) bb

Littonia modesta *Hook.*, Liliaceae *s.l.*, 2
hlamvu (Z) rt; *iHlamvu* (Z) rt

Lonchocarpus capassa *Rolfe*, Fab.+Papilionoideae, 1
impandezoviyo (Z) bk; *umBhandu* (Z) bk; *umPhanda* (Z) bk

Lycopodium clavatum *L.*, Lycopodiaceae, 1
nwelele (Z) wpl; *unWele* (Z) wpl

Macaranga capensis (*Baill.*) *Benth. ex Sim.*, Euphorbiaceae, 10
mphumalelo (Z) bk; umphumeleli (Z) bk; *unOmpumelelo* (Z) bk

Maesa lanceolata *Forssk.*, Myrsinaceae, 17
denda (Z) rt; *isiDenda* (Z) rt; *isiThende* (Z) rt; maguqu (Z) rt; maguqu
(Z) rt; sdenda (Z) rt; *uMaguqu* (Z) rt

Malva

parviflora *L.**, Malvaceae, 2
phate-ea-ngaka (S) rt; phateyangaka (S) rt
verticellata *L.* var. **verticellata*, Malvaceae, 2
moshala-shuping (S) rt**

Margaritaria discoidea (Baill.) Webster, Euphorbiaceae, 2
khwangu (Z) rt; mgwangu (Z) rt; mkwangu (Z) rt; *umKhwangu* (Z) rt

Maytenus

acuminata (L.f.) Loes., Celastraceae, 31
isiNama (Z) bk; lulama (Z) bk; mlulama (Z) bk; snama (Z) bk; *um-Lulama-omkhulu* (Z) bk

undata (Thunb.) Blakelock, Celastraceae, 30
dabulovallo (Z) bk; *inDabulalualo* (Z) bk; ndabula lovalo (Z) bk; nda-bulovallo (Z) bk

Mentha aquatica L., Lamiaceae⁺, 1
iMbozisa (Z) l/st; mbozisa (Z) l/st

Mesembryanthemum sp., Mesembryanthemaceae, 8
gibleweni (Z) st; ngebeleweni (Z) st; *uGebeleweni* (Z) st; iKhambi-lamabulawo (Z) l/st

Microgramma lycopodioides (L.) Copel., Polypodiaceae, 13
iKhambilezintwala (Z) wpl; ikhumbile-twala (Z) wpl; kambile ntswala (Z) wpl; khambi-lentwala (Z) wpl

Milletia sutherlandii Harv., Fab.+Papilionoideae, 1
umKhunye (X) rt

Mimosa

pigra L., Fab.+Mimosoideae, 11
iMbuna (Z) l/st; mbuna (Z) l/st
pudica L. var. **hispida** Brenan, Fab.+Mimosoideae, 11
iMbuna (Z) l/st; mbuna (Z) l/st

Mimusops

caffra E.Mey. ex DC., Sapotaceae, 3
amaSethole (Z); masethole (Z) bk
obovata Sond., Sapotaceae, 3
amaSethole (Z); masethole (Z) bk
sp., Sapotaceae, 1
thunzikulu (Z) bk

Momordica foetida Schumach., Cucurbitaceae, 2
inTshungu (Z) l/st

Monanthotaxis caffra (Sond.) Verdc., Annonaceae, 6
mazwende (Z) rt; mgogentilanya (S) rt; *uMazwende* (Z) rt; *umGogawezinhlangany* (Z) rt

Mondia whitei (Hook.f.) Skeels, Periplocaceae, 2
mondi (Z) rt; *uMondi* (Z) rt

Monsonia natalensis Knuth, Geraniaceae, 1
inagile (Z) rt; *uNakile* (Z) rt

Moraea spathulata (L.f.) Klatt, Iridaceae, 3
hlamvu (z) rt; *iHlamvu* (Z) rt

Mucuna coriacea Baker subsp. **irritans** (Burt Davy) Verdc., Fab.+Papilionoideae, 1
shirtsisi (V) rt

Mundulea sericea (Willd.) A.Chev., Fab.+Papilionoideae, 2
mukundandou (V) rt; masimba ndlovu (Z) rt; *umSindandlovu* (Z) rt

Myrica serrata Lam., Myricaceae, 30
iLethi (Z) bk; lulama (Z) bk; mlulama (Z) bk; *umLulama* (Z) bk

Myrothamnus flabellifolius (Sond.) Welw., Myrothamnaceae, 26
uVukwababa (Z) l/st; *uVukwabafile* (Z) l/st; vugamafile (Z) l/st; vuka-kwa-bafile (Z) l/st; vukakwabafileyo (Z) l/st

Mystacidium

capense (L.f.) Schltr., Orchidaceae, 3
ipamba (Z) rt; *iPhamba* (Z) rt; pamba (Z) rt; phamba (Z) rt
spp., Orchidaceae, 3
ipamba (Z) rt; *iPhamba* (Z) rt; pamba (Z) rt; phamba (Z) rt

Noltea africana (L.) Rchb.f., Rhamnaceae, 1
maleleka (X) bk; *umaLuleka* (Z) bk

Nuxia floribunda Benth., Loganiaceae, 30
lulama (Z) bk; mlulama (Z) bk; *umLulama* (Z) bk

Nymphaea

nouchali Burm.f., Nymphaeaceae, 6
iZibu (Z) wpl
spp., Nymphaeaceae, 6
iZibu (Z) wpl

Ochna

holstii Engl., Ochnaceae, 11
espangu (Z) bk; *isiBhanku* (Z) bk; sibanku (Z) bk; spanku (Z) bk
natalitia (Meisn.) Walp., Ochnaceae, 9
isiThundu (Z) rt; madlozana (Z) rt; mahlozana (Z) rt; sithundu (Z) rt; *uMadlozana* (Z) rt

Ocotea bullata (Burch.) E.Mey., Lauraceae, 33
nukani (Z) bk; *uNukane* (Z) bk

Olea woodiana Knobl., Oleaceae, 14
mhlwazimamba (Z) rt; mlwazi mamba (Z) rt; *umHlwazimamba* (Z) rt

Olinia

radiata J.Hofmeyr & E.Phillips, Oliniaceae, 12
mzaneno (Z) bk; *umZaneno* (Z) bk; zaneno (Z) bk
ventosa (L.) Cufod., Oliniaceae, 3
iNgobamakhosi (Z) rt

Ornithogalum longibracteatum Jacq., Liliaceae s.l., 18
mababaza (Z) bb; *uMababaza* (Z) bb

Osteospermum imbricatum L. subsp. **nervatum** (DC.) Norl. var. **nervatum**, Asteraceae⁺, 8
inKuphulana (Z) l/st; mokuphule (S) l/st; nkuphulana (Z) l/st; nku-phulwane (Z) l/st; sebelele (S) l/st

Osyridocarpus schimperianus (Hochst. ex A.Rich.) A.DC., Santalaceae, 8
malala (Z) l/st; marobalo (S) l/st; *uMalala* (Z) l/st

Othonna natalensis Sch.Bip., Asteraceae⁺, 2
iNcama (Z) rt

Ozoroa spp., Anacardiaceae, 1
isiFice (Z) bk/ l/ rt

Pachycarpus

rigidus E.Mey., Asclepiadaceae, 23
iShongwe (Z) rt; poho-tshela (S) rt; pootshetla (S) rt; shongwe (Z) rt
spp., Asclepiadaceae, 23
iShongwe (Z) rt; shongwe (Z) rt

Pappea capensis Eckl. & Zeyh., Sapindaceae, 31
uVumebomvu (Z) rt; vuma, red (Z/E) rt

Parinari curatellifolia Planch. ex Benth., Chrysobalanaceae, 1
uBulawu (Z) bk

Pelargonium luridum (Andr.) Sweet, Geraniaceae, 7
eshaka (Z) rt; *iShaga* (Z) rt; isihaga (Z) rt; shaqa (Z) rt; *unYawolwenkukhu* (Z) rt; *uVendle*(Z) rt; *vendhle* (Z) rt

Pellaea

calomelanos (Sw.) Link, Adiantaceae, 11
iNkomankoma (Z) rt/l; khomankhoma (Z) rt/l; nkomankoma (Z) rt/l
rufa A.F.Tryon, Adiantaceae, 4
iKhambi (Z) rt
sp., Adiantaceae, 11
iNkomankoma (Z) rt; khomankhoma (Z) rt; nkomankoma (Z) rt

Peltophorum africanum Sond., Fab.+Caesalpinioideae, 12
mosehla (T) bk; mosetla (T) bk; msehla (Z) bk; *umSehle* (Z) bk

Pentanisia prunelloides (Eckl. & Zeyh.) Walp. subsp. **prunelloides**, Rubiaceae, 30
cimamlilo (Z) rt; gcimamlilo (Z) rt; *iCimamlilo* (Z) rt; *iCishamlilo* (Z) rt; setima mollo (S) rt

Peucedanum

magalismontanum Sond., Apiaceae⁺, 28
bheka (Z) wpl; bheka-mina (Z) wpl; bhekaminagedwa (S) wpl; *iBheka* (Z) wpl
thodei Arnold, Apiaceae⁺, 4
iMpondovu (Z) l/st; mpondofu (Z) l/st

Phyllanthus meyerianus Müll.Arg., Euphorbiaceae, 31
iLethi (Z) bk

Phytolacca

dioica L., Phytolaccaceae, 5
mzimuka (Z) rt; *umZimuka* (Z) rt; zimuka (Z) rt
heptandra Retz., Phytolaccaceae, 1
poho-tshela (S) rt; pootshetla (S) rt

Piliostigma thonningii (Schum.) Milne-Redh., Fab.+Caesalpinioideae, 1
nkolokotso (Sh)

Scilla

natalensis *Planch.*, Liliaceae *s.l.*, 39
 guduza (Z) bb; *inGuduza* (Z) bb; nguduza (Z) bb
nervosa (*Burch.*) *Jessop*, Liliaceae *s.l.*, 21
inGcino (Z) bb; ncino (Z) bb; ngcina (Z) bb; ngcino (Z) bb

Sclerocarya birrea (*A.Rich.*) *Hochst.* subsp. **caffra** (*Sond.*) *Kokwaro*,
 Anacardiaceae, 28
 mganu (Z) bk; *umGanu* (Z) bk

Scolopia mundii (*Eckl. & Zeyh.*) *Warb.*, Flacourtiaceae, 10
 mdwendwelencuba (Z) bk; *uDwendwelwegcuba* (Z) bk

Secamone gerrardii *Harv. ex Benth.*, Asclepiadaceae, 22
iPhophoma (Z) rt; phophoma (Z) rt; popoma (Z) rt

Securidaca longepedunculata *Fresen.*, Polygalaceae, 2
iPhuphuma (Z) st; phuphuma (Z) st

Senecio

coronatus (*Thunb.*) *Harv.*, Asteraceae⁺, 24
 balebatsa (S) rt; bulibazi (Z) rt; lepatsi (S) rt; libazi (Z) rt; molebatsa
 (S) rt; *ubuLibazi* (Z) rt
gregatus *Hilliard*, Asteraceae⁺, 19
 ntsukumbili (Z) l/st; sukumbili (Z) l/st; *unSukumbili* (Z) l/st;
uNtsukumbili (Z) l/st
speciosus *Willd.*, Asteraceae⁺, 4
 bohloholo (Z) wpl; *iBohloholo* (Z) wp

Sideroxylon inerme *L.*, Sapotaceae, 2
amaSethole (Z) bk; masethole (Z) bk; *uMaphipha* (Z) bk

Silene bellidioides *Sond.*, Caryophyllaceae, 13
 gwayana (Z) wpl; isigwayana (Z) wpl; *uGwayana* (Z) wpl

Siphonochilus aethiopicus (*Schweinf.*) *B.L.Burt*, Zingiberaceae, 12
isiPhephetho (Z) rt; siphephetho (Z) rt; sphephetho (Z) rt

Sisyranthus sp., Asclepiadaceae, 3
umFanozacile (Z) rt

Smilax anceps *Willd.*, Liliaceae *s.l.*, 5
inGqaqabulani (Z) rt; xaxabulane (Z) rt

Solanum

aculeastrum *Dun.*, Solanaceae, 19
inTuma (Z) fr; ntuma (Z) fr; *umThuma* (Z) fr
hermannii *Dun.*, Solanaceae, 19
inTuma (Z) fr; ntuma (Z) fr; *umThuma* (Z) fr
mauritianum *Scop.**, Solanaceae, 13
 bhoqo (Z) rt; boqo (Z) rt; *uBoqo* (Z) rt; *uBhoqo* (Z) rt; *uGwayana* (Z)
 bk/st
panduriforme *E.Mey.*, Solanaceae, 19
inTumemncane (Z) fr; ntuma (Z) fr

Spermacoce natalensis *Hochst.*, Rubiaceae, 27
inSulansula (Z) rt; *isiNdiyandiya* (Z) rt; mabophe (Z) rt; mahbhope (Z)
 rt; ndyandiya (Z) rt; ntsulansula (Z) rt; sindiyandiya (Z) rt;
 sulansula (Z) rt; *uMabophe* (Z) rt

Spilanthes mauritiana (*Pers.*) *DC.*, Asteraceae⁺, 1
isiSinini (Z) l/st; sinini (Z) l/st

Spirostachys africana *Sond.*, Euphorbiaceae, 15
 mthombothi (Z) bk; tomboti (Z) bk; *umThombothi* (Z) bk

Stachys nigricans *Benth.*, Lamiaceae⁺, 5
 musa (Z) rt; *uMusa* (Z) rt

Stangeria eriopus (*Kuntze*) *Baill.*, Stangeriaceae, 27
 fingo (Z) rt (lt); *imFingo* (Z) rt (lt); mfingo (Z) rt (lt)

Stapelia gigantea *N.E.Br.*, Asclepiadaceae, 14
 isililo (Z) wpl; maliliza (Z) wpl; *uZililo* (Z) wpl

Strophanthus

gerrardii *Stapf*, Apocynaceae, 1
 hlungubendlovu (Z) fr; *ubuHlungubendlovu* (Z) fr
luteolus *Codd*, Apocynaceae, 1
 hlungubendlovu (Z) fr; *ubuHlungubendlovu* (Z) fr
petersianus *Klotzsch*, Apocynaceae, 1
 hlungubendlovu (Z) fr; *ubuHlungubendlovu* (Z) fr
speciosus (*Ward & Harv.*) *Reber*, Apocynaceae, 1
 hlungu (Z) fr; *isiHlungu* (Z) fr; uhlungu (Z) fr

Strychnos

decussata (*Pappe*) *Gilg*, Loganiaceae, 1
 lahlankosi (Z) bk; mlahlankosi (Z) bk; mpafa (Z) bk; *umLahlankosi* (Z)
 bk

henningsii *Gilg*, Loganiaceae, 8
 mkwalothi (Z) bk; nkawulothi (Z) bk; nkwalothi (Z) bk; *umNono* (Z)
 bk; *uManono* (X) bk; *umQalothi* (Z) bk

mitis *S.Moore*, Loganiaceae, 7
 mkwalothi (Z) bk; nkawulothi (Z) bk; nkwalothi (Z) bk; *umNono* (Z)
 bk; *uManono* (X) bk; *umQalothi* (Z) bk

spinosa *Lam.*, Loganiaceae, 1
 mhlahla (Z); mslasa (Z); *umHlala* (Z)

Synadenium cupulare (*Boiss.*) *L.C.Wheeler*, Euphorbiaceae, 3
 mdlebe (Z) bk; *umDlebe* (Z) bk

Synaptolepis kirkii *Oliv.*, Thymelaeaceae, 31
uVumomhlope (Z) rt; vuma, white (Z/E) rt

Tabernaemontana elegans *Stapf*, Apocynaceae, 2
 Muhatu (V) rt/fr

Talinum caffrum (*Thunb.*) *Eckl. & Zeyh.*, Portulacaceae, 33
 punyu (Z) rt; punyuka (Z) rt; *uMpunyu* (Z) rt

Teedia lucida *Rudolphi*, Scrophulariaceae, 1
 hloenya (S) rt; hlwenya (Z) rt

Tephrosia

marginella *H.M.Forbes*, Fab.* / Papilionoideae, 1
isiDala (Z) l/st; sidala (Z) l/st
spp., Fab.* / Papilionoideae, 1
iLozana (Z) rt; lozlana (Z) rt

Terminalia

phanerophlebia *Engl. & Diels*, Combretaceae, 9
amaNgwansundu (Z) rt; *amaNgwamhlophe* (Z) rt
sericea *Burch. ex DC.*, Combretaceae, 9
amaNgwamhlophe (Z) rt
spp., Combretaceae, 9
amaNgwe (Z) rt

Tetradenia riparia (*Hochst.*) *Codd*, Lamiaceae⁺, 1
iBoza (Z) l/st

Thesium pallidum *A.DC.*, Santalaceae, 35
 mahesaka, red (Z/E) rt; maisaka, red (Z/E) rt; maysaka, red (Z/E) rt;
 mysaka, red (Z/E) rt; *uMahesakobomvu* (Z) rt

Thespesia acutiloba (*Baker f.*) *Exell & Mendonca*, Malvaceae, 1
iPhuphuma (Z) st; phuphuma (Z) st

Tieghemia quinquenervia (*Hochst.*) *Balle*, Loranthaceae, 8
iPhakama (Z) wpl; phakama (Z) wpl

Toddaliopsis bremekampii *I.Verd.*, Rutaceae, 1
iNtana (Z) bk

Tragia

meyeriana *Müll.Arg.*, Euphorbiaceae, 34
 bangalala (Z) rt; *imBabazane* (Z) rt; mbabazane (Z) rt; *uBangalala* (Z) rt
rupestris *Sond.*, Euphorbiaceae, 2
imBabazane (Z) rt; mbabazane (Z) rt

Trema orientalis (*L.*) *Blume*, Ulmaceae, 2
 muvungazi (Z) bk; umuvungazi (Z) bk; *umVangazi* (Z) bk; uvangasi
 (Z) bk

Tribulus terrestris *L.*, Zygophyllaceae, 1
 sekanama (T) bb

Tricalysia lanceolata (*Sond.*) *Burt Davy*, Rubiaceae, 6
 msuzwane (Z) l/st; suzwane (Z) l/st; *umSuzwane* (Z) l/st; usuzwane (Z) l/st

Trichilia

dregeana *Sond.*, Meliaceae, 29
 mkhuhlu (Z) bk; mutuhu (V) bk; *uMathunzi* (Z) bk; *umKhuhlu* (Z) bk;
 vungulamoya (Z) bk; vungulomo (Z) bk
emetica *Vahl*, Meliaceae, 29
 mkhuhlu (Z) bk; mutuhu (V) bk; *uMathunzi* (Z) bk; *umKhuhlu* (Z) bk;
 vungulamoya (Z) bk; vungulomo (Z) bk

Tridactyle

bicaudata (*Lindl.*) *Schltr.*, Orchidaceae, 4
 ipamba (Z) rt; *iPhamba* (Z) rt; pamba (Z) rt; phamba (Z) rt

- abaNqonqosi** (Z)
see Nqonqosi, aba
- abaPhaphe** (Z)
see Phaphe, aba
- abaqonqosi** (Z)
Cupressus sp.* bk
Podocarpus henkelii bk
- amabelejongosi** (Z)
Eulophia cucullata rt
E. spp. rt
- amaNgwamhlope** (Z)
see Ngwamhlope, ama
- amaNgwamnyama** (Z)
see Ngwamnyama, ama
- amaNgwansundu** (Z)
see Ngwansundu, ama
- amangwe, black** (Z)
Cadaba natalensis bk
- amaNgwe** (Z)
see Ngwe, ama
- amaSethole** (Z)
see Sethole, ama
- Babazane, im** (Z)
Tragia meyeriana rt
T. rupestris rt
- balebatsa** (S)
Senecio coronatus rt
- Bande, um** (Z)
Greyia sutherlandii bk
- bangalala omhlope** (Z)
unknown 1 rt
- Bangalala, u** (Z) (also **bangalala**)
Corchorus asplenifolius rt
Eriosema saligna rt
Gymnosporia buxifolia rt
Hippocratea longipetiolata rt
Rhynchosia spp. rt
Salacia kraussii rt
Tragia meyeriana rt
- Bani, u** (Z)
Agapanthus africanus rt
A. campanulatus rt
A. praecox subsp. *orientalis* rt
- Belejongosi, uma** (Z)
Eulophia cucullata rt
E. spp. rt
- Bethe, um** (Z)
Clutia spp. rt
- Bhaha, isi** (Z)
Warburgia salutaris bk
- Bhandu, um** (Z)
Lonchocarpus capassa bk
- Bhanku, isi** (Z)
Ochna holstii bk
- bheka-mina** (Z)
Peucedanum magalismontanum wpl
Pimpinella caffra wpl
Scabiosa columbaria wpl
- Bheka, i** (Z) (also **bheka**)
Peucedanum magalismontanum wpl
Pimpinella caffra wpl
Scabiosa columbaria wpl
- bhekaminagedwa** (S)
Peucedanum magalismontanum wpl
Scabiosa columbaria wpl
- Bhinini, isi** (Z)
Embelia ruminata rt
- Bhoqo, u** (Z) (also **bhoqo**)
Ipomoea spp. rt
Solanum mauritianum rt
Turbina oblongata rt
- Bhubhubhu, u** (Z) (also **bhubhubhu**)
Crotalaria globifera rt
Helinus integrifolius rt
- Bhucu, i** (Z)
Bulbine alooides wpl
B. asphodeloides wpl
B. frutescens wpl
B. latifolia wpl
- Bhuma, i** (Z)
Typha capensis rt
- Binda, um** (Z)
Garcinia gerrardii bk
- binini** (Z)
Embelia ruminata rt
- Bohlololo, i** (Z) (also **bohlololo**)
Achyroopsis avicularis wpl
Aptenia cordifolia var. *cordifolia* wpl
Senecio speciosus wpl
- Bola, um** (Z)
Eucomis bicolor bb
- bonisele** (Z)
Acalypha glandulifolia wpl
Corchorus confusus rt
- Boqo, u** (Z) (also **boqo**)
Ipomoea spp. rt
Solanum mauritianum rt
Turbina oblongata rt
- Bovana, um** (Z)
Elaeodendron croceum bk
- bovimba** (Z)
Withania somnifera rt
- Boza, i** (Z)
Tetradenia riparia l, st
- bububu** (Z)
Crotalaria globifera rt
Helinus integrifolius rt
- Bulawu, u** (Z)
Parinari curatellifolia bk
Cyathula sp. bk
- bulibazi** (Z)
Senecio coronatus rt
- Butha, i** (Z) (also **buthe**)
Asparagus laricinus rt
A. setaceus rt
A. virgatus rt
Myrsiphyllum asparagoides rt
M. ramosissimum rt
- byere** (Sh)
Acalypha villicaulis rt
- Cacane, i** (Z)
Kniphofia uvaria rt
- Cena, i** (Z) (also **cena**)
Aloe maculata l
A. sp. l
- chambeswe** (S)
Dianthus mooiensis subsp. wpl
- chanibeswe** (S)
Dianthus mooiensis subsp. wpl
- chisizwe** (Z)
Portulaca sp. rt
- Cimamlili, i** (Z) (also **cimamlilo**)
Pentanisia prunelloides subsp. *prunelloides* rt
- Cishamlilo, i** (Z)
Pentanisia prunelloides subsp. *prunelloides* rt
- Cubudwana, i** (Z) (also **cubudwana**)
Ledebouria cooperi bb
L. ovatifolia bb
L. revoluta bb
- Cumane, um** (Z)
Alberta magna bk
- cwaningi** (Z)
Capparis brassii rt
C. tomentosa rt
- Dabingehlele, un** (Z)
Basella paniculata
- Dabu, um** (Z) (also **dabu**)
Elephantorrhiza elephantina rt
- Dabulaluvalo, in** (Z)
Maytenus undata bk
- dabulamava** (Z)
unknown 2 wpl
- dabulovalo** (Z)
Maytenus undata bk
- Dakane, um** (Z) (also **dakane**)
Apodytes dimidiata subsp. *dimidiata* rt
- Dakwa, u** (Z)
Dioscorea dregeana rt
- Dala, isi** (Z)
Tephrosia marginella l, st
- Dawoluthi, in** (Z)
Belamcanda spp. rt
- delawena** (Z)
Asclepias cucullata l, rt
- Delunina, u** (Z) (also **delunina**)
Asclepias cucullata rt
- Denda, isi** (Z) (also **denda**)
Maesa lanceolata rt
- Dewehlathi, um** (Z)
Commiphora woodii bk
- Dikili, isi** (Z) (also **dikili**)
Gnidia burchellii rt
G. cuneata rt
G. kraussiana var. *kraussiana* rt
G. spp. rt
- dira-ga-dibone** (S)
Cephalaria humilis rt
- Diyaza, un** (Z)
Bersama stayneri bk
B. swinnyi bk
B. tysoniana bk
- Dlandlovu, um** (X) (also **dlandlovu**)
Bauhinia bowkeri rt
- Dlavusa, um** (Z) (also **dlavusa**)
Afzelia quanzensis bk
Eucalyptus sp.* bk
- Dlebe, um** (Z) (also **dlebe**)
Eucalyptus sp.* bk
Synadenium cupulare bk
- Dlebelendlovu, i** (Z)
Trimeria grandifolia bk
T. trinervis bk
- Dlebeyendlovu, i** (Z)
Blighia unijugata bk
Homalium dentatum bk
- Dlolenkonyane, i** (Z)
Rumex crispus rt
R. lanceolatus rt
- Dlula, i** (Z)
Begonia dregei rt
B. homonyma rt
- dlutjane** (Z)
Aster bakeranus rt
- Dlutshana, u** (Z)
Aster bakeranus rt
- dlutshani** (Z)
Aster bakeranus rt
- Dodemnyama, in** (Z) (also **dodemnyama**)
Diospyros galpinii rt
Diospyros villosa var. *villosa* rt
- Dolencane, in** (Z)
Triumfetta rhomboidea rt
- dolenkonyane** (Z)
Triumfetta rhomboidea rt
- dololenkonyan** (Z)
Rumex crispus rt
R. lanceolatus rt
- Dondwani, um** (Z) (also **dondweni**)
Coddia rudis rt
- Dongana-zibomvana, un** (Z)
Drimia elata bb
D. robusta bb
- dubanhlosi** (Z)
Croton sylvaticus bk
- Dubu, um** (Z)
Combretum caffrum rt
C. erythrophyllum rt
C. hereroense rt
C. kraussii rt
- duganeswe** (Z)
unknown 3 bk
- dumaphantsi** (Z)
unknown 4 bk
- Dumbahlozi, in** (Z)
Croton sylvaticus bk

- Dumo, isi (Z)**
Ilex mitis var. *mitis* bk
- dungamuzi (Z)**
Euclea spp. rt
- Dungamuzi, i (Z)**
Euclea crispa subsp. *crispa* rt
Euclea spp. rt
- Dwa, isi (Z)**
Gladiolus sericeo-villosus forma *sericeo-villosus* bb
- Dwendwelencuba, u (Z)**
Rhus chirindensis bk
- Dwendwelwegcuba, u (Z)**
Scolopia mundii bk
- Dwendweni, un (Z) (also dwendweni)**
Crocosmia aurea bb
C. paniculata bb
Dierama pendulum bb
Eulophia cucullata rt
E. spp. rt
Gladiolus dalenii bb
G. sericeo-villosus forma *sericeo-villosus* bb
- dwendwenlencuba (Z)**
Rhus chirindensis bk
- eshaka (Z)**
Pelargonium luridum rt
- espangu (Z)**
Ochna holstii bk
- Fanozacile, um (Z)**
Kohautia amatymbica rt
Sisyranthus sp. rt
- fazi-tetayo (Z)**
Hippobromus pauciflorus rt
- Fazothethayo, um (Z)**
Hippobromus pauciflorus rt
- Feyenkawu, im (Z)**
Ansellia africana rt
- Fice, isi (Z)**
Ozoroa spp. bk, l, st
- Fico, isi (Z)**
Protorhus longifolia bk
- Ficosehlati, isi (Z)**
Protorhus longifolia bk
- Fingo, im (Z) (also fingo)**
Stangeria eriopus rt
- Fithi, isi (Z)**
Baphia racemosa bk
- Fudu, u (Z)**
Dioscorea sylvatica rt
- Fusamvu, um (Z) (also fusamfu)**
Pittosporum viridiflorum bk
- Gadankawu, um (Z)**
Albizia adianthifolia bk
- Galagala, um (X) (also galagala)**
Buxus macowanii l, fl
B. natalensis l, fl
- Ganu, um (Z)**
Sclerocarya birrea subsp. *caffra* bk
- garpe (S)**
unknown 5 bb
- gashi (Z)**
unknown 6 bb
- Gazine, un (Z) (also gazine)**
Bridelia cathartica bk
- gcimamlilo (Z)**
Pentanisia prunelloides subsp. *prunelloides* rt
- Gcino, in (Z)**
Albuca pachychlamys bb
Scilla nervosa bb
- Gebeleweni, u (Z)**
Mesembryanthemum sp. l, st
Rhipsalis baccifera st
- Gibisila, u (Z) (also gibisile)**
Bowiea volubilis bb
- gibleweni (Z)**
Mesembryanthemum sp. l, st
Rhipsalis baccifera st
- gibonisele (Z)**
Acalypha glandulifolia wpl
Corchorus confusus rt
- Gibonisele, u (Z)**
Acalypha glandulifolia wpl
- Gibonisele, un (Z)**
Corchorus confusus rt
- Goba, isi (Z)**
Asparagus africanus rt
A. falcatus rt
A. sp. rt
Behnia reticulata rt
- Gobandlovu, u (Z) (gobandlovu)**
Balanites maughamii bk
- Gobho, u (Z)**
Gunnera perpensa rt
- gobo (Z)**
Gunnera perpensa rt
- Godide, u (Z) (also godide)**
Jatropha hirsuta rt
J. zeyheri rt
- Gogawezinhlanganya, um (Z)**
Monanthes affra rt
- gopho (Z)**
Gunnera perpensa rt
- Gqaqabulani, in (Z)**
Smilax anceps rt
- Gqikisikatokoloshe, isi (Z)**
Dietes iridioides l, st
- Gqikisomkhovu, isi (Z)**
Encephalartos sp. fl, st
- Guduza, in (Z) (also guduza)**
Scilla natalensis bb
- gwavuma (Z)**
Elaeodendron transvaalense bk
- gwayana (Z)**
Silene bellidioides wpl
- Gwayana, u (Z)**
Silene bellidioides wpl
- Gwayana, i (Z)**
Silene bellidioides wpl
- Gwenya, um (Z) (also gwenya)**
Harpephyllum caffrum bk
- Gxamu, um (Z)**
Schotia brachypetala bk
- Hlabahlangane, u (Z)**
Cycnium racemosum rt
- hlabalangan (Z)**
Cycnium racemosum rt
- hlabamanzi (Z)**
Rauvolfia caffra bk
- hlabehlangan (Z)**
Cycnium racemosum rt
- Hlabekufeni, uma (Z)**
Croton sylvaticus bk
- Hlabelo, um (Z)**
Urginea spp. bb
- Hladlothi, um (X)**
Albizia adianthifolia bk
- hlahlabadimo (S)**
Chenopodium ambrosioides * l, st
- Hlahlankosi, um (Z)**
Ziziphus mucronata subsp. *mucronata* bk
- hlahlanyosi, white (Z)**
Schlechterina mitostemmatoides wpl
- hlala kwabafileyo (Z)**
unknown 7 wpl
- Hlala, um (Z)**
Strychnos spinosa bk
- Hlalamagwababa, um (Z)**
Bridelia micrantha bk
- hlalamakwababa (Z)**
Bridelia micrantha bk
- hlalanyosi (Z)**
Schlechterina mitostemmatoides wpl
- hlalanyosi, red (Z)**
unknown 8 rt
- Hlalanyosi, i (Z)**
Schlechterina mitostemmatoides wpl
- Hlambamanzi, um (Z)**
Rauvolfia caffra bk
- Hlamvu, i (Z) (also hlamvu)**
Callilepis laureola rt
Disa spp. rt
Gloriosa superba rt
Littonia modesta rt
Moraea spathulata rt
Sandersonia aurantiaca rt
- Hlangothi, un (Z)**
Protorhus longifolia bk
- Hlangula, um (Z)**
Euclea divinorum rt
- Hlele, um (Z)**
Ehretia rigida rt
- Hliziynkulu, in (Z)**
Dombeya rotundifolia var. *rotundifolia* bk
- hloenya (S)**
Dicoma anomala rt
Teedia lucida rt
- Hlokoshiyane, in (Z) (also hlokoshiyane)**
Rhus chirindensis bk
- hlokwaletsela (S)**
Dianthus basuticus subspp. wpl
D. mooiensis subspp. wpl
- hlokwana-latesela (S)**
Dianthus basuticus subspp. wpl
D. mooiensis subspp. wpl
- Hlonishwa, um (Z)**
Psoralea pinnata rt
- Hlonyane, u (Z)**
Vernonia adoensis rt
- Hlonyane, um (Z) (also hlonyane)**
Artemisia afra l, st
Cotula anthemoides l, st
- Hluguwendlovu, u (Z)**
Strophanthus luteolus fr
- Hlungu, isi (Z) (also hlungu)**
Strophanthus speciosus fr
- Hlungu-lungu, u (Z)**
Vernonia tigna rt
- hlungubendlovu (Z)**
Strophanthus gerrardii fr
S. luteolus fr
S. petersianus fr
- Hlungubendlovu, u (Z)**
Strophanthus sp. fr
- Hlungubendlovu, ubu (Z)**
Strophanthus gerrardii fr
S. petersianus fr
- hlunguhlungu (Z)**
Vernonia tigna rt
- Hlunguhlungu, um (Z)**
Vernonia tigna rt
- Hlungunyembe, i (Z) (also hlungunyembe)**
Acokanthera oblongifolia rt, l
A. oppositifolia rt, l
- Hlungwana, ubu (Z)**
Aspilia natalensis l/st
- Hluthi, um (Z)**
Protorhus longifolia bk
Rapanea melanophloeos bk
- Hluze, i (Z)**
Schotia brachypetala bk
- Hlwazi, um (Z)**
Catha edulis bk, l
- Hlwazimamba, um (Z)**
Olea woodiana rt
- hlwenya (Z)**
Dicoma anomala rt
Teedia lucida rt
- iBheka (Z)**
see Bheka, i
- iBhucu (Z)**
see Bhucu, i
- iBhuma (Z)**
see Bhuma, i

- iBohlololo (Z)**
see Bohlololo, i
- ibonisele (Z)**
Acalypha glandulifolia wpl
Corchorus confusus rt
- iBoza (Z)**
see Boza, i
- ibuco (Z)**
Bulbine alooides wpl
B. asphodeloides wpl
B. frutescens wpl
B. latifolia wpl
- ibuqu (Z)**
Bulbine alooides wpl
B. asphodeloides wpl
B. frutescens wpl
B. latifolia wpl
- iButha (Z)**
see Butha, i
- iCacane (Z)**
see Cacane, i
- iCena (Z)**
see Cena, i
- iCimamlili (Z)**
see Cimamlilo, i
- iCishamlilo (Z)**
see Cishamlilo, i
- iCubudwana (Z)**
see Cubudwana, i
- iDlebelendlovu (Z)**
see Dlebelendlovu, i
- iDlebeyendlovu (Z)**
see Dlebeyendlovu, i
- iDlula (Z)**
see Dlula, i
- idlutshane (Z)**
Aster bakeranus
- iDololenkonyane (Z)**
see Dlololenkonyane, i
- iDungamuzi (Z)**
see Dungamuzi, i
- iGwayana (Z)**
see Gwayana, i
- iHlalanyosi (Z)**
see Hlalanyosi, i
- iHlamvu (Z)**
see Hlamvu, i
- iHlungunyembe (Z)**
see Hlungunyembe, i
- iHluze (Z)**
see Hluze, i
- ihozawoza (Z)**
Cymbopogon spp. rt, st
- ijikantambo (Z)**
unknown 9 sd
- iJingijolo (Z)**
see Jingijolo, i
- iKalamuzi (Z)**
see Kalamuzi, i
- iKhakhasi (Z)**
see Khakhasi, i
- iKhambi (Z)**
see Khambi, i
- iKhambilamabulawo (Z)**
see Khambilamabulawo, i
- iKhambilezintwala (Z)**
see Khambilezintwala, i
- iKhathazo (Z)**
see Khathazo, i
- iKhokhela (Z)**
see Kkokhela, i
- ikhumbile-twala (Z)**
Microgramma lycopodioides wpl
- ikomfe (Z)**
Hypoxis gerrardii bb
H. hemerocallidea bb
- iLabatheka (Z)**
see Labatheka, i
- iLabathekelimhlophe (Z)**
see Labathekelimhlophe, i
- iLabathekelimnyama (Z)**
see Labathekelimnyama, i
- iletha (Z)**
unknown 10
- iLethi (Z)**
see Lethi, i
- ilokwalatsela (S)**
Dianthus basuticus subspp. wpl
D. mooiensis subspp. wpl
- iLoshana (Z)**
see Loshana, i
- iLoyi (Z)**
see Loyi, i
- iLozana (Z)**
see Lozana, i
- ilugulugu (Z)**
unknown 11 bk
- ilukuluku (Z)**
Dombeya rotundifolia var. *rotundifolia* bk
- imanaye (Z)**
Ekebergia capensis bk
- imBabazane (Z)**
see Babazane, im
- imbola (Z)**
Eucomis bicolor bb
- iMbozisa (Z)**
see Mbozisa, i
- iMboziso (Z)**
see Mboziso, i
- iMbuna (Z)**
see Mbuna, i
- imFeyenkawu (Z)**
see Feyenkawu, im
- iMfingo (Z)**
see Fingo, im
- imkoka (Z)**
Abrus precatorius subsp. *africanus* sd
- impandezoviyo (Z)**
Lonchocarpus capassa bk
- impendewa shaye (Z)**
Adenia gummifera var. *gummifera* st
- iMphepho (Z)**
see Mphepho, i
- iMphephotshani (Z)**
see Mphephotshani, i
- imPila (Z)**
see Pila, im
- imPindamshaye (Z)**
see Pindamshaye, im
- iMpishimpishi (Z)**
see Mpishimpishi, i
- imPiskayihlangulwa (Z)**
see Piskayihlangulwa, im
- iMpiyampinya (Z)**
see Mpinyampinya, i
- iMpondovu (Z)**
see Mpondovu, i
- imPundu (Z)**
see Pundu, im
- inagile (Z)**
Monsonia natalensis rt
- iNcama (Z)**
see Ncama, i
- iNcamashela (Z)**
see Ncamashela, i
- iNcotho (Z)**
see Ncotho, i
- incoto (Z)**
Boophane disticha bb
- inDabulaluvalo (Z)**
see Dabulaluvalo, in
- indakane (Z)**
Apodytes dimidiata subsp. *dimidiata* rt
- inDawoluthi (Z)**
see Dawoluthi, in
- Indian kalmoes (E)**
unknown 12 rt
- Indian pills (E)**
unknown 13 sd
- indiyaza (Z)**
Bersama stayneri bk
B. swinnyi bk
B. tysoniana bk
- indlaba baloyi (Z)**
unknown 14 bk
- indlebendlovu (Z)**
unknown 15 bb
- inDodemnyama (Z)**
see Dodemnyama, in
- inDolencane (Z)**
see Dolencane, in
- indumbadlozi (Z)**
Croton sylvaticus bk
- inDumbahlozi (Z)**
see Dumbahlozi, in
- inGcino (Z)**
see Gcino, in
- iNgobamakhosi (Z)**
see Ngobamakhosi, i
- inGqaqabulani (Z)**
see Gqaqabulani, in
- inGuduza (Z)**
see Guduza, in
- iNgwavuma (Z)**
see Ngwavuma, in
- iNgwevu (Z)**
see Ngwevu, i
- inhlanhla mpedi (Z)**
unknown 16 rt
- iNhlanhla (Z)**
see Nhlanhla, i
- iNhlehle (Z)**
see Nhlehle, i
- inHliziyonkulu (Z)**
see Hliziyonkulu, in
- inHlokoshiyane (Z)**
see Hlokoshiyane, in
- iNingizimu (Z)**
see Ningizimu, i
- inJundumlahleni (Z)**
see Jundumlahleni, in
- inKalamasane (Z)**
see Kalamasane, in
- inKamamasane (Z)**
see Kamamasane, in
- inkehli (Z)**
Afzelia quanzensis bk
- iNkomankoma (Z)**
see Nkomankoma, i
- iNkomfe (Z)**
see Nkomfe, i
- iNkunzemnyama (Z)**
see Nkunzemnyama, i
- inKupheyana (Z)**
see Kupheyana, in
- inKuphulana (Z)**
see Kuphulana, in
- inNyathelo (Z)**
see Nyathelo, in
- inqgene (Z)**
Aloe sp. l
- iNsulansula (Z)**
see Nsulansula, i
- iNtana (Z)**
see Ntana, in
- inTindili (Z)**
see Tindili, in
- inTolwane (Z)**
see Tolwane, in
- iNtombikayibhinci (Z)**
see Ntombikayibhinci, i
- inTshungu (Z)**
see Tshungu, in
- intshwalabenyoni (Z)**
Burchellia bubalina bk

- inTuma** (Z)
see Tuma, in
- inTumemncane** (Z)
see Tumemncane, in
- inTwalalubombo** (Z)
see Twalalubombo, in
- inYathelo** (Z)
see Yathelo, in
- inYazangomelimnyama** (Z)
see Yazangomelimnyama, in
- inYokiziphinda** (Z)
see Yokiziphinda, in
- iNyongwane** (Z)
see Nyongwane, i
- ipamba** (Z)
Balanites maughamii bk
Chlorophytum comosum wpl
Cyrtorchis arcuata rt
Diaphananthe millarii rt
Mystacidium capense rt
M. spp. rt
Tridactyle bicaudata rt
T. tridentata rt
- iPhakama** (Z)
see Phakama, i
- iphamba lephanzi** (Z)
unknown 17 bb
- iPhamba** (Z)
see Phamba, i
- iphambala** (Z)
unknown 18 bk
- iPhengulula** (Z)
see Phengulula, i
- iPhophoma** (Z)
see Phophoma, i
- iPhuphuma** (Z)
see Phuphuma, i
- iqhume** (Z)
Hippobromus pauciflorus rt
- iQongqo** (Z)
see Qongqo, i
- iQonsi** (Z)
see Qonsi, i
- iQwaningi** (Z)
see Qwaningi, i
- isaphulo** (Z)
Garcinia livingstonii bk
- iShaladilezinyoka** (Z)
see Shaladilezinyoka, i
- iShaqa** (Z)
see Shaqa, i
- iShinga** (Z)
see Shinga, i
- iShobalehashi** (Z)
see Shobalehashi, i
- iShongwe** (Z)
see Shongwe, i
- isiBhaha** (Z)
see Bhaha, isi
- isiBhanku** (Z)
see Bhanku, isi
- isiBhinini** (Z)
see Bhinini, isi
- isiDala** (Z)
see Dala, isi
- isiDenda** (Z)
see Denda, isi
- isiDikili** (Z)
see Dikili, isi
- isiDumo** (Z)
see Dumo, isi
- isiDwa** (Z)
see Dwa, isi
- isiFice** (Z)
see Fice, isi
- isiFico** (Z)
see Fico, isi
- isiFicosehlathi** (Z)
see Ficosehlathi, isi
- isiFithi** (Z)
see Fithi, isi
- isigiba-nyongo** (Z)
Achyroopsis avicularis wpl
- isiGoba** (Z)
see Goba, isi
- isiGqikisikatokoloshe** (Z)
see Gqikisikatokoloshe, isi
- isiGqikisomkhovu** (Z)
see Gqikisomkhovu, isi
- isihaga** (Z)
Pelargonium luridum rt
- isiHlungu** (Z)
see Hlungu, isi
- isiKlenama** (Z)
see Klenama, isi
- isiKotshonkovu** (Z)
see Kotshonkovu, isi
- isililo** (Z)
Stapelia gigantea wpl
- isilumi** (Z)
unknown 19 rt
- isiManaye** (Z)
see Manaye, isi
- isiNama** (Z)
see Nama, isi
- isiNamasenyongo** (Z)
see Namasenyongo, isi
- isiNdiyandiya** (Z)
see Ndiyandiya, isi
- isinga** (Z)
Xysmalobium undulatum bk
- isiNwazi** (Z)
see Nwazi, isi
- isiPhahluka** (Z)
see Phahluka, isi
- isiPhephetho** (Z)
see Phephetho, isi
- isiqunga sikatokoloshe** (Z)
Dietes iridioides l, st
- isiQunga** (Z)
see Qunga, isi
- isiSefu** (Z)
see Sefu, isi
- isiSinini** (Z)
see Sinini, isi
- isiThaphuka** (Z)
see Thaphuka, isi
- isiThende** (Z)
see Thende, isi
- isiThundu** (Z)
see Thundu, isi
- isiVumelwane** (Z)
see Vumelwane, isi
- iThethe** (Z)
see Thethe, i
- iWozawoza** (Z)
see Wozawoza, i
- ixapuzi** (Sw)
Ranunculus multifidus l, st
- izapuzi** (Z)
Ranunculus multifidus l, st
- iZaza** (Z)
see Zaza, i
- iZibu** (Z)
see Zibu, i
- izimpande zomthunduluka** (Z)
Ximenia caffra var. *natalensis* rt
- Jingijolo, i** (Z) (also **jingijolo**)
Rubus pinnatus rt
R. rigidus rt
- Juluka, um** (Z) (also **juluka**)
Casearia gladiiformis rt
- jundu** (Z)
Curtisia dentata bk
- Jundumlahleni, in** (Z)
Curtisia dentata bk
- junundu** (Z)
unknown 20 bk
- Kalamasane, in** (Z)
Euphorbia natalensis wpl
- Kalamuzi, i** (Z)
Acorus calamus rt
- kalimele** (Z)
Cissampelos torulosa l, st
Dumasia villosa var. *villosa* l, st
Rhynchosia spp. l, st
- kalmasan** (Z)
Euphorbia bupleurifolia wpl
E. natalensis wpl
E. pulvinata wpl
- kalmoes** (Z)
Acorus calamus rt
- Kamamasane, in** (Z)
Euphorbia bupleurifolia wpl
E. natalensis wpl
E. pulvinata wpl
- kambi le ntuala** (Z)
Microgramma lycopodioides wpl
- kanyakude** (Z)
Acacia xanthophloea bk
- kapalanga** (Z)
Lichtensteinia interrupta rt
- katankawu** (Z)
Albizia adianthifolia bk
- kataza** (Z)
Alepidea amatymbica var. *amatymbica* rt
A. longifolia rt
- kathazo** (Z)
Alepidea amatymbica var. *amatymbica* rt
A. longifolia rt
- Kele, um** (Z)
Ehretia rigida rt
- khaba** (Z)
Rauvolfia caffra bk
- khabamanzi** (Z)
Rauvolfia caffra bk
- Khakhasi, i** (Z)
Berkheya multijuga rt
- Khalimele, u** (Z)
Cissampelos torulosa l, st
Dumasia villosa var. *villosa* l, st
Rhynchosia spp. l, st
- Khamba, um** (Z)
Acacia sieberiana var. *woodii* bk
- khambi-lentwala** (Z)
Microgramma lycopodioides wpl
- Khambi, i** (Z)
Pellaea rufa rt
Turraea obtusifolia rt
- Khambilamabulawo, i** (Z)
Carpobrotus edulis l, st
Mesembryanthemum sp. l, st
- Khambilezintwala, i** (Z)
Microgramma lycopodioides wpl
- Khanyakude, um** (Z)
Acacia xanthophloea bk
- Khaphalapanga, um** (Z)
Lichtensteinia interrupta rt
- Khathazo, i** (Z) (also **khatazo**)
Alepidea amatymbica var. *amatymbica* rt
A. longifolia rt
- khawulani** (Z)
unknown 21 l, st
- Khiwane, um** (Z)
Ficus sur bk
- Khokha, um** (Z)
Abrus precatorius subsp. *africanus* sd
- Khokhela, i** (Z) (also **khokhela**)
Justicia capensis rt
- khomankhoma** (Z)
Cheilanthes hirta rt, l
Cyathea dregei rt
Dryopteris athamantica rt
D. inaequalis rt
Pellaea calomelanos rt, l
P. sp. rt

- Khondweni, um (Z)**
Cryptocarya latifolia bk
C. myrtifolia bk
- Khuhlu, um (Z)**
Trichilia dregeana bk
T. emetica bk
- Khumizo, um (X)**
Protorhus longifolia bk
- Khunye, um (X)**
Millettia sutherlandii rt
- Khuze, um (Z)**
Heteropyxis natalensis rt
- Khwangu, um (Z) (also khwangu)**
Acokanthera oppositifolia l, rt
Erythrophleum lasianthum bk
Margaritaria discoidea rt, bk
- Klenama, isi (Z)**
Drimia elata bb
D. robusta bb
Urginea altissima bb
U. delagoensis bb
U. macrocentra bb
U. sanguinea bb
- kokela (Z)**
Justicia capensis rt
- komba (Z)**
 unknown 22 bb
- Kotshonkovu, isi (Z)**
Encephalartos sp. fl, st
- kotsonkovu (Z)**
Encephalartos sp. fl, st
- kungwini (Z)**
Plectranthus sp. rt
- Kupheyana, in (Z)**
Chrysanthemoides monilifera subsp.
monilifera wpl
- Kuphulana, in (Z)**
Osteospermum imbricatum subsp. *nervatum* l, st
- labateka (Z)**
Hypoxis colchicifolia bb
H. sp. bb
- labatheka, white (Z)**
Zantedeschia albomaculata subsp. *albomaculata* bb
- Labatheka, i (Z)**
Hypoxis colchicifolia bb
H. sp. bb
- Labathekelimhlophe, i (Z)**
Zantedeschia albomaculata subsp. *albomaculata* bb
- Labathekelimnyama, i (Z)**
Hypoxis colchicifolia bb
- lahlankosi (Z)**
Gerrardina foliosa bk
Vernonia natalensis l, rt
Ziziphus mucronata subsp. *mucronata* bk
- Lahlankosi, um (Z)**
Gerrardina foliosa bk
Vernonia natalensis l, rt
- Lahleni, um (Z)**
Curtisia dentata bk
- Lahlenisefile, um (Z)**
Curtisia dentata bk
- lebone (Z)**
 unknown 23 rt
- lehwama (S)**
 unknown 24 bb
- lengana (S)**
Artemisia afra l, st
- lengwana (S)**
 unknown 25 l, st
- lepatsi (S)**
Senecio coronatus rt
- lesokwana (S)**
Alepidea pilifera rt
A. setifera rt
- Lethi, i (Z)**
Croton gratissimus var. *subgratissimus* bk
- Gerrardina foliosa* bk
Myrica serrata bk
Phyllanthus meyerianus bk
- letswelane (S)**
 unknown 26 rt
- Libazi, ubu (Z) (also libazi)**
Senecio coronatus rt
- lilathile (Z)**
Hippobromus pauciflorus rt
- Lomomnandomncane, um (Z)**
Anthospermum rigidum subsp. *pumilum* rt
Glycyrrhiza glabra rt
- Loselina, u (Z) (also loselina)**
Cinnamomum camphora bk
- Loshana, i (Z) (also loshana)**
Buddleja salviifolia rt
- Loyi, i (Z)**
Datura metel l, st
D. stramonium * l, st
- Lozana, i (Z)**
Tephrosia spp. rt
- lozlana (Z)**
Tephrosia spp. rt
- lucky beans (E)**
 unknown 27 sd
- lulama (Z)**
Cunonia capensis bk
Deinbollia oblongifolia bk
Gerrardina foliosa bk
Maytenus acuminata var. *acuminata* bk
Myrica serrata bk
Nuxia floribunda bk
Turraea floribunda bk
- Lulama, um (Z)**
Deinbollia oblongifolia bk
Maytenus acuminata var. *acuminata* bk
Myrica serrata bk
Nuxia floribunda bk
- Lulama-omncane, um (Z)**
Turraea floribunda bk
- Lulama-womfula, um (Z)**
Gerrardina foliosa bk
- Lulamomkhulu, um (Z)**
Cunonia capensis bk
- Luleka, uma (Z)**
Gerrardina foliosa bk
Noltea africana bk
- Lunge, um (Z)**
Crocosmia aurea bb
C. paniculata bb
Gladiolus sericeo-villosus forma *sericeo-villosus* bb
- lungumabele (Z)**
Zanthoxylum capense rt
Z. davyi rt
- Luthu, um (Z)**
Vitex rehmannii l
V. wilmsii var. *reflexa* l
- lutjane (Z)**
Aster bakeranus rt
- Mababaza, u (Z) (also mababaza)**
Ornithogalum longibracteatum bb
- Mabelejongosi, u (Z) (also mabelejongosi)**
Eulophia cucullata rt
E. spp. rt
- mabone (Z)**
Rubia cordifolia subsp. *conotricha* rt
- Mabopha, u (Z) (also mabophe)**
Acridocarpus natalitius var. *natalitius* rt
A. natalitius var. *linearifolius* rt
Spermacoce natalensis rt
- Mabusane, u (Z) (also mabusane)**
Capparis brassii rt
C. tomentosa rt
- Madilika, u (Z) (also madilika)**
Rhynchosia nervosa var. *nervosa* bk
- madiophalana (S)**
 unknown 28 rt
- Madlozana, u (Z) (also madlozana)**
Berchemia discolor rt
Ochna natalitia rt
Turraea floribunda rt
- Madlozanomncane, u (Z)**
Turraea obtusifolia rt
- mafumbuka (Z)**
Hydnora africana rt
Sarcophyte sanguinea subsp. *sanguinea* rt
- magoga (T)**
Urginea spp. bb
- Maguqu, u (Z) (also maguqu)**
Maesa lanceolata rt
- mahbhope (Z)**
Acridocarpus natalitius var. *natalitius* rt
A. natalitius var. *linearifolius* rt
Spermacoce natalensis rt
- mahesaka, red (Z)**
Thesium pallidum rt
- Mahesakobomvu, u (Z)**
Thesium pallidum rt
- Mahesakomhlope, u (Z)**
Agathosma ovata rt
- mahirisaka, white (Z)**
Agathosma ovata rt
- Mahlabekufeni, u (Z) (also mahlabekufeni)**
Croton gratissimus var. *subgratissimus* bk
C. sylvaticus bk
- mahlabufeni (Z)**
Croton gratissimus var. *subgratissimus* bk
- mahlabufeni (Z) (cont.)**
C. sylvaticus bk
- Mahlanganisa, u (Z) (also mahlanganisa)**
Urginea delagoensis bb
- mahlokolosa (Z)**
Urginea altissima bb
U. spp. bb
- Mahlongoloji, u (Z)**
Urginea altissima bb
U. spp. bb
- mahlozana (Z)**
Berchemia discolor rt
Ochna natalitia rt
Turraea floribunda rt
- mahlunzidintaba (Z)**
Ekebergia capensis bk
- Mahogwe, u (Z) (also mahogwe)**
Adenostemma caffra l, st
A. viscosum l, st
Kalanchoe crenata l, st
- mahpipa (Z)**
Rapanea melanophloeos bk
- maime (Z)**
Brunsvigia sp. wpl
Clivia miniata var. *miniata* wpl
C. nobilis wpl
C. spp. wpl
- maisaka, red (Z)**
Thesium pallidum rt
- maisaka, white (Z)**
Agathosma ovata rt
- maisaka, black (Z)**
 unknown 29 rt
- Makhothigobile, u (Z) (also makhotigobile)**
Cyanotis speciosa rt
- Malala, u (Z) (also malala)**
Jasminum angulare l, st
Osyridocarpus schimperianus l, st
- maleleka (X)**
Gerrardina foliosa bk
Noltea africana bk
- malidalanga (Z)**
 unknown 30 bk
- maliliza (Z)**
Stapelia gigantea wpl
- malubakupekwa (Sh)**
 unknown 31 rt
- malulek (Z)**
Cunonia capensis bk

- Manaye, isi (Z)**
Ekebergia capensis bk
- mankunkuniku (Z)**
unknown 32 bk
- manolo (S)**
Wahlenbergia sp. rt
- Manono, u (X)** (also **manono**)
Strychnos henningsii bk
S. mitis bk
- Manzamnyama, u (Z)** (also **manzemnyama**)
Anemone caffra rt
A. fanninii rt
- maphipha ntelezi (Z)**
Albuca fastigiata rt
A. nelsonii rt
- Maphipha, u (Z)** (also **maphipha**)
Rapanea melanophloeos bk
- Maphiphakhubalo, u (Z)**
Rapanea melanophloeos bk
- Maphiphintelezi, u (Z)**
Albuca fastigiata rt
A. nelsonii rt
- maqadini (X)**
Cassine peragua subsp. *peragua* bk
- Maqadini, u (Z)** (also **maqadani**)
Catunaregam spinosa subsp. *spinosa* fr
- maququ (Z)**
Maesa lanceolata rt
- marobadibogale (S)**
Aloe sp. l
- marobalo (S)**
Osyridocarpus schimperianus l, st
- masethole (Z)**
Mimusops caffra bk
M. obovata bk
Sideroxylon inerme bk
- mashinishini (Z)**
Plumbago auriculata rt
- mashwileshwile (Z)**
Plumbago auriculata rt
- masimba ndlovu (Z)**
Mundulea sericea rt
- masunungule (V)**
unknown 33 bk
- Maswelisweli, u (Z)**
Plumbago auriculata rt
- matanjana (Z)**
Raphionacme sp. rt
- Mathanjana, u (Z)**
Raphionacme sp. rt
- Mathinta, u (Z)** (also **mathinta**)
Eriospermum luteo-rubrum rt
- Mathithibala, u (Z)** (also **mathithibala**)
Aloe aristata wpl
Haworthia fasciata wpl
H. limifolia wpl
- Mathunga, u (Z)** (also **mathunga**)
Eucomis autumnalis bb
- Mathunzini, u (Z)**
Ekebergia capensis bk
- Mathunziwezintaba, u (Z)**
Ekebergia capensis bk
- matinta (Z)**
Eriospermum luteo-rubrum rt
- Matshintshine, u (Z)**
Plumbago auriculata rt
- Mavumbuka, u (Z)**
Hydnora africana rt
Sarcophyte sanguinea subsp. *sanguinea* rt
- Mayime, u (Z)** (also **mayime**)
Brunsvigia sp. wpl
Clivia miniata var. *miniata* wpl
C. nobilis wpl
C. spp. wpl
- mayisake, white (Z)**
Agathosma ovata rt
- maysaka, red (Z)**
Thesium pallidum rt
- mazwende (Z)**
Monanthes affra rt
Uvaria affra rt
U. lucida subsp. *virens* rt
- Mazwende, u (Z)**
Monanthes affra rt
- Mazwendumnyama, u (Z)**
Uvaria affra rt
Uvaria lucida subsp. *virens* rt
- mbabazane (Z)**
Tragia meyeriana rt
T. rupestris rt
- Mbesa, u (Z)** (also **mbeza**)
Andrachne ovalis rt
- mbhando (V)**
Albizia adianthifolia bk
- mbinda (Z)**
Garcinia gerrardii bk
- mbola (Z)**
Eucomis bicolor bb
- Mbozisa, i (Z)** (also **mbozisa**)
Foeniculum vulgare l, st
Lichtensteinia interrupta rt
Mentha aquatica l, st
- Mboziso, i (Z)** (also **mboziso**)
Foeniculum vulgare l, st
- Mbuna, i (Z)** (also **mbuna**)
Mimosa pigra l, st
M. pudica var. *hispida* l, st
- mcaka (Z)**
unknown 34 l, st
- mchumane (Z)**
Alberta magna bk
- mdabu (Z)**
Elephantorrhiza elephantina rt
- mdlandlovu (X)**
Bauhinia bowkeri rt
- mdlangwenya (Z)**
Cryptocarya latifolia bk
- Mdlangwenya, u (Z)**
Cryptocarya latifolia bk
- mdlanlothe (Z)**
Albizia adianthifolia bk
- mdlavusa (Z)**
Azelia quanzensis bk
Eucalyptus sp.* bk
- mdlebe (Z)**
Eucalyptus sp. * bk
Synadenium cupulare bk
- mdubu (Z)**
Combretum caffrum rt
C. erythrophyllum rt
C. hereroense rt
C. kraussii rt
- mduza (Z)** (also **mduze**)
Crinum delagoense bb
C. macowanii bb
C. moorei bb
- mdwendwelencuba (Z)**
Scolopia mundii bk
- Membeza, u (Z)**
Andrachne ovalis rt
- memeza, white (Z)**
Calodendrum capense bk
- memezi, red (Z)**
Cassipourea flanaganii bk
C. gerrardii bk
- Memeziobomvu, u (Z)**
Cassipourea flanaganii bk
C. gerrardii bk
- Memezomhlope, u (Z)**
Calodendrum capense bk
- mfazi-othethayo (X)**
Hippobromus pauciflorus rt
- mfazitetio (Z)**
Hippobromus pauciflorus rt
- mfingo (Z)**
Stangeria eriopus rt
- mfusamvu (Z)**
Pittosporum viridiflorum bk
- mgadankawu (Z)**
Albizia adianthifolia bk
- mganu (Z)**
Sclerocarya birrea subsp. *caffra* bk
- mgogentilanya (S)**
Monanthes affra rt
- mgwangu (Z)**
Acokanthera oppositifolia l, rt
Erythrophleum lasianthum bk
Margaritaria discoidea rt, bk
- mhlabele (Z)**
Blighia unijugata bk
- mhlahla (Z)**
Strychnos spinosa bk
- mhlandloti (X)**
Albizia adianthifolia bk
- mhlangula (Z)**
Euclea divinorum rt
- mhlangulwa (Z)**
Euclea divinorum rt
- mhlavusa (Z)**
Eucalyptus sp. * bk
- mhlonyane (Z)**
Artemisia afra l, st
Cotula anthemoides l, st
- mhlwazi (Z)**
Catha edulis bk, l
- mhlwazimamba (Z)**
Olea woodiana rt
- mhuluka (Z)**
Barringtonia racemosa rt
- minya (Z)**
Croton sylvaticus bk
- Minya, u (Z)**
Croton sylvaticus bk
- Minyela, u (Z)**
Commiphora africana bk
C. harveyi bk
- mjuluka (Z)**
Casearia gladiiformis rt
- mkadankawu (Z)**
Albizia adianthifolia bk
- mkanyakude (Z)**
Acacia xanthophloea bk
- mkapalanga (Z)**
Lichtensteinia interrupta rt
- mkhamba (Z)**
Acacia sieberiana var. *woodii* bk
- mkhapalanga (Z)**
Lichtensteinia interrupta rt
- mkhondweni (Z)**
Cryptocarya latifolia bk
C. myrtifolia bk
- mkhuhlu (Z)**
Trichilia dregeana bk
T. emetica bk
- mkhwangu (Z)**
Acokanthera oppositifolia l, rt
Erythrophleum lasianthum bk
Margaritaria discoidea rt, bk
- mkiwane (Z)**
Ficus sur bk
- mkwalothi (Z)**
Strychnos henningsii bk
S. mitis bk
- mkwangu (Z)**
Acokanthera oppositifolia l, rt
Erythrophleum lasianthum bk
Margaritaria discoidea rt, bk
- mlahleni (Z)**
Curtisia dentata bk
- mlahlenisefile (Z)**
Curtisia dentata bk
- mlomo mnandi (Z)**
Anthospermum rigidum subsp. *pumilum* rt
Glycyrrhiza glabra rt

- mlulama** (Z)
Cunonia capensis bk
Deinbollia oblongifolia bk
Gerrardina foliosa bk
Maytenus acuminata var. *acuminata* bk
Myrica serrata bk
Nuxia floribunda bk
Turraea floribunda bk
- mlunge** (Z)
Crocosmia aurea bb
C. paniculata bb
Gladiolus sericeo-villosus forma *sericeo-villosus* bb
- mlungendodeni** (Z)
 unknown 35 bb
- mlungumabele** (Z)
Zanthoxylum capense rt
Z. davyi rt
- mluthu** (Z)
Vitex rehmannii l
V. wilmsii var. *reflexa* l
- mlwazi mamba** (Z)
Olea woodiana rt
- mmolate** (S)
 unknown 36 bk
- mningizimu** (Z)
Dianthus crenatus wpl
D. zeyheri subsp. wpl
- mnokwana** (S)
Zanthoxylum capense rt
Z. davyi rt
- mningwane** (Z)
Zanthoxylum capense rt
Z. davyi rt
- mnyama we mpunzi** (Z)
Plectranthus grallatus rt
- mnyamati** (Z)
Ekebergia capensis bk
- moakaila** (V)
 unknown 37 st
- moapatladi** (S)
Capparis brassii rt
C. tomentosa rt
- mobade** (V)
 unknown 38 bk
- modabo** (S)
Elephantorrhiza elephantina rt
- mohato** (S)
Berkheya onopordifolia var. *onopordifolia* rt
- moilela** (Z)
Tulbaghia alliacea bb
T. ludwigiana bb
T. simmleri bb
- mokamba** (V)
Dioscorea dregeana rt
- mokhura** (S)
Ricinus sp. l, st
- mokuphule** (S)
Osteospermum imbricatum subsp. *nervatum* l, st
- molebatsa** (S)
Senecio coronatus rt
- momotheka** (S)
 unknown 39 rt
- Mondi, u** (Z) (also **mondi**)
Cinnamomum zeylancium bk
Mondia whitei bk
- mongadi** (S)
Gnidia burchellii rt
- moolologa** (S)
Croton sylvaticus bk
- moopatladi** (S)
Capparis brassii rt
C. tomentosa rt
- morensoeng** (S)
 unknown 40 rt
- morulela** (S)
Pleurostyliia capensis bk
- mosaye** (S)
 unknown 41 bk
- mosehla** (T)
Peltophorum africanum bk
- mosehlana** (S)
Elephantorrhiza elephantina rt
- mosetla** (T)
Peltophorum africanum bk
- moshala-shuping** (S)
Lithospermum cinereum rt
Malva verticellata var. *verticellata* rt
- Moyawezwe, u** (Z) (also **moya-wezwe**)
Gerbera piloselloides st
Heliophila subulata rt
- mpafa** (Z)
Ziziphus mucronata subsp. *mucronata* bk
- mpendulo** (Z)
Acalypha villicaulis rt
- mpepeshwane** (Z)
Psammotropha myriantha rt
- mpepo** (Z)
Achyrocline stenoptera l, st
Helichrysum cymosum subsp. *calvum* l, st
H. decorum l, st
H. epapposum l, st
H. gymnocomum l, st
H. natalitium l, st
H. nudifolium l, st
H. odoratissimum l, st
- mpheabonwe** (S)
Cephalaria humilis rt
- Mphepho, i** (Z) (also **mphepho**)
Achyrocline stenoptera l, st
Helichrysum cymosum subsp. *calvum* l, st
H. decorum l, st
H. epapposum l, st
H. gymnocomum l, st
H. natalitium l, st
H. nudifolium l, st
H. odoratissimum l, st
- Mphephotshani, i** (Z)
Psammotropha myriantha rt
- mphimbi** (Z)
Garcinia livingstonei bk
- mphompho** (Z)
Scadoxus puniceus bb
- mphumalelo** (Z)
Macaranga capensis bk
- Mpikayiboni, u** (Z) (also **mpikayiboni**)
Cephalaria humilis rt
- mpila** (Z)
Callilepis laureola rt
- mpindamshaye** (Z)
Adenia gummifera var. *gummifera* st
- Mpinyampinya, i** (Z)
Dioscorea rupicola rt
- Mpishimpishi, i** (Z)
Diospyros galpinii rt
- mpiskayi hlanguwa** (Z)
Eucalyptus sp. * bk
- mpiyampinya** (Z)
Dioscorea rupicola rt
- Mpondovu, i** (Z) (also **mpondofu**)
Peucedanum thodei l, st
- Mpunyu, u** (Z)
Talinum caffrum rt
- mqonga** (X)
Cassipourea gerrardii bk
- msehla** (Z)
Peltophorum africanum bk
- msenge** (Z)
Cussonia spicata bk, st
- mshekisani** (Z)
Euclea divinorum rt
E. undulata rt
- msingala salugazi** (Z)
Asclepias fruticosa rt
A. physocarpa rt
- mslangoti** (Z)
Albizia adianthifolia bk
- mslasa** (Z)
Strychnos spinosa bk
- mslavusa** (Z)
Eucalyptus sp. * bk
- msuzwane** (Z)
Lippia javanica l, st
Tricalysia lanceolata l, st
- mthathi** (Z)
Ptaeroxylon obliquum bk
- mthole** (Z)
Acacia caffra bk
- mthombothi** (Z)
Spirostachys africana bk
- mthunduluka** (Z)
Ximenia caffra var. *natalensis* rt
- mthunyelelwa** (Z)
Pleurostyliia capensis bk
- mtoto** (Z)
 unknown 42 bk
- mtunyelwa** (Z)
Pleurostyliia capensis bk
- muangata** (V)
 unknown 43 rt
- muhatu** (V)
Tabernaemontana elegans rt, fr
- mukundandou** (V)
Mundulea sericea rt
- Mululuka, u** (Z) (also **mululuka**)
Barringtonia racemosa rt
- mulumananma** (V)
Elaeodendron transvaalense bk
- munyu** (Z)
 unknown 44 rt
- mupimbi** (V)
Garcinia livingstonei bk
- murulela** (V)
Pleurostyliia capensis bk
- murumelelwa** (V)
Pleurostyliia capensis bk
- Musa, u** (Z) (also **musa**)
Crabbea hirsuta rt
- musenzhe** (V)
Cussonia spicata bk, st
- musinde** (V)
 unknown 45 bk
- musunzi** (V)
Wrightia natalensis rt
- mutavhatsindi** (V)
Brackenridgea zanguebarica rt
- mutshutshunga** (V)
Bridelia micrantha bk
- mutuhu** (V)
Trichilia dregeana bk
- mutzene** (V)
 unknown 46 bk
- muvhungo** (V)
 unknown 47 rt
- muvungazi** (Z)
Trema orientalis bk
- mvhakata** (Sh)
 unknown 48 rt
- mvithi** (Z)
Boscia albitrunca rt
B. foetida subsp. *rehmanniana* rt
Eragrostis plana rt
- mvongoti** (Z)
Kigelia africana fr
- mvuthuza** (Z)
Kalanchoe sp. l, st
Knowltonia bracteata l, st
- mwelela** (Z)
Tulbaghia alliacea bb
T. ludwigiana bb
T. simmleri bb
- mysaka, red** (Z)
Thesium pallidum rt

- mysaka, white** (Z)
Agathosma ovata rt
- mzaneno** (Z)
Olinia radiata bk
- mzilanyoni** (Z)
Croton sylvaticus bk
- mzimuka** (Z)
Phytolacca dioica rt
- mziwalapha ungaphi** (Z)
Harpagophytum procumbens rt, sd
- mzunya** (Z)
unknown 49 rt
- Nakile, u** (Z)
Monsonia natalensis rt
- Nama, isi** (Z)
Elaeodendron croceum bk
Maytenus acuminata bk
Priva cordifolia var. *abyssinica* rt
- Namasenyongo, isi** (Z)
Achyroopsis avicularis wpl
- Ncama, i** (Z)
Othonna natalensis rt
- Ncamashela, i** (Z) (also **ncamashela**)
Eriospermum cooperi rt
E. ornithogaloides rt
- ncino** (Z)
Albuca pachychlamys bb
Scilla nervosa bb
- Ncotho, i** (Z)
Boophane disticha bb
- ndaba-ugehlele** (Z)
Basella paniculata l, st
- ndabula lovalo** (Z)
Maytenus undata bk
- ndabulovalu** (Z)
Maytenus undata bk
- ndauluti** (Z)
Belamcanda spp. rt
- ndengandhlela** (Z)
Polygala confusa rt
P. gerrardii rt
P. marensis rt
P. ohlendorffiana rt
P. serpentaria rt
- Ndiyandiya, isi** (Z)
Bersama lucens bk
B. stayneri bk
B. swinnyi bk
B. tysoniana bk
Spermacoce natalensis bk
- ndiyaza** (Z)
Bersama stayneri bk
B. swinnyi bk
B. tysoniana bk
- ndlangwenya** (Z)
Cryptocarya latifolia bk
- ndlebelendlovu** (Z)
Trimeria grandifolia bk
T. trinervis bk
- ndlebendlovu** (Z)
Homalium dentatum bk
- ndodemnyama** (Z)
Diospyros galpinii rt
D. villosa var. *villosa* rt
- ndolenkonyane** (Z)
Triumfetta rhomboidea rt
- ndongwana zimbomvana** (Z)
Drimia elata bb
D. robusta bb
- ndumbadlozi** (Z)
Croton sylvaticus bk
- Nduze, um** (Z)
Crinum bulbispermum bb
C. delagoense bb
C. macowanii bb
C. moorei bb
C. sp. bb
- Nga, umu** (Z)
Acacia karroo bk
- Ngamanzi, um** (Z)
Acacia robusta subsp. *clavigera* bk
A. robusta subsp. *robusta* bk
- ngazine** (Z)
Bridelia cathartica bk
- ngcina** (Z)
Albuca pachychlamys bb
Scilla nervosa bb
- ngcino** (Z)
Albuca pachychlamys bb
Scilla nervosa bb
- ngebeleweni** (Z)
Mesembryanthemum sp. l, st
Rhipsalis baccifera st
- Ngobamakhosi, i** (Z)
Olinia ventosa rt
- ngoto** (Z)
Boophane disticha bb
- Ngqengendlela, u** (Z)
Polygala confusa rt
P. gerrardii rt
P. marensis rt
P. ohlendorffiana rt
P. serpentaria rt
- ngubozohlonya** (Z)
Boophane disticha bb
- nguduza** (Z)
Scilla natalensis bb
- ngwahma** (X)
unknown 50 bk
- Ngwaleni, u** (Z)
Clutia hirsuta l, rt
C. platyphylla l, rt
C. pulchella l, rt
- Ngwamhlope, ama** (Z)
Terminalia phanerophlebia rt
T. sericea rt
- Ngwamnyama, ama** (Z)
Cadaba natalensis bk
- Ngwansundu, ama** (Z)
Terminalia phanerophlebia rt
- Ngwavuma, in** (Z) (also **ngwavuma**)
Elaeodendron transvaalense bk
- Ngwe, ama** (Z)
Terminalia spp. rt
- ngwedlane** (Z)
Clutia hirsuta l, rt
C. platyphylla l, rt
C. pulchella l, rt
- ngwenya** (Z)
Harpephyllum caffrum bk
- Ngwevu, i** (Z)
Dioscorea sylvatica rt
- nhlangothi** (Z)
Protorhus longifolia bk
- nhlanhla omhlope** (Z)
unknown 51 rt, st
- Nhlanhla, i** (Z) (also **nhlanhla**)
Tylophora flanaganii rt
- Nhlehle, i** (Z)
Euphorbia woodii wpl
- nhliziyonkulu** (Z)
Dombeya rotundifolia var. *rotundifolia* bk
- nhlungunyembe** (Z)
Acokanthera oblongifolia rt, l
A. oppositifolia rt, l
- Ningizimu, i** (Z)
Dianthus crenatus wpl
D. zeyheri subsp. wpl
- nkawulothi** (Z)
Strychnos henningsii bk
S. mitis bk
- nkehle** (Z)
Afzelia quanzensis bk
- nkolokotso** (Sh)
Piliostigma thonningii bk
- Nkomankoma, i** (Z) (also **nkomankoma**)
Cheilanthes hirta rt, l
Cyathea dregei rt
- Dryopteris athamantica* rt
D. inaequalis rt
Pellaea calomelanos rt, l
P. sp. rt
- Nkomfe, i** (Z)
Hypoxis gerrardii bb
H. hemerocallidea bb
- Nkungwini, u** (Z) (also **nkungwini**)
Plectranthus sp. rt
- Nkunzemnyama, i** (Z)
Euclea natalensis
- nkunzi, black** (Z)
Euclea natalensis rt
- nkunzi-emnyama** (Z)
Euclea natalensis rt
- nkuphulana** (Z)
Osteospermum imbricatum subsp. *nervatum* l, st
- nkuphulwane** (Z)
Osteospermum imbricatum subsp. *nervatum* l, st
- nkwalothi** (Z)
Strychnos henningsii bk
S. mitis bk
- nogimpinda** (Z)
Boscia albitrunca rt
- nokoloka** (Sh)
unknown 52 rt
- nomanyama** (Sh)
Cassia abbreviata subsp. *beareana* bk
- nomuhlahli** (Z)
unknown 53 rt
- Nono, um** (Z)
Strychnos henningsii bk
S. mitis bk
- nqangandlela** (Z)
Polygala confusa rt
P. gerrardii rt
P. marensis rt
P. ohlendorffiana rt
P. serpentaria rt
- Nqonqosi, aba** (Z)
Cupressus sp.* bk
Podocarpus henkelii bk
- nqupulwane** (Z)
Chrysanthemoides monilifera subsp. *monilifera* wpl
- Nsukumbili, u** (Z)
Chenopodium ambrosioides l, st
Hypericum aethiopicum subsp. *aethiopicum* l, st
Senecio gregatus l, st
S. serratuloides var. *gracilis* l, st
- Nsulansula, i** (Z)
Eriospermum mackenii rt
E. sp. rt
Spermacoce natalensis rt
- nswila** (Sh)
unknown 54 st
- ntabazimbi** (V)
Brackenridgea zanguebarica rt
- ntalibombo** (Z)
Rubia cordifolia subsp. *conotricha* rt
- Ntana, in** (Z)
Toddalopsis bremekampii bk
- ntantanyana** (Z)
Crabbea hirsuta rt
- ntemulula** (Z)
unknown 55 bk
- ntindili** (Z)
Entada rheedii sd
- ntolwane** (Z)
Elephantorrhiza elephantina rt
- Ntombikayibhinci, i** (Z) (also **ntombi-kayibhinci**)
Ficus sur bk
- ntsekele** (Sh)
Ximenia americana rt

- ntsontane** (Z)
unknown 56 rt
- ntsukumbili** (Z)
*Chenopodium ambrosioides** 1, st
Hypericum aethiopicum subsp. *aethiopicum* 1, st
Senecio gregatus 1, st
S. serratuloides var. *gracilis* 1, st
- ntsulansula** (Z)
Eriospermum mackenii rt
E. sp. rt
Spermacoe natalensis rt
- ntswila** (Ts)
Vangueria infausta subsp. *infausta* st
- ntuma** (Z)
Solanum aculeastrum fr
S. hermannii fr
S. panduriforme fr
- ntwalubombo** (Z)
Rubia cordifolia subsp. *conotricha* rt
- Nukane, u** (Z) (also **nukani**)
Ocotea bullata bk
- nukelamabiba** (Z)
Clausena anisata bk
- Nukelambiba, um** (Z)
Clausena anisata rt
- Nungumabele, um** (Z)
Zanthoxylum capense rt
Z. davyi rt
- Nungwane, um** (Z) (also **nungwane**)
Zanthoxylum capense rt
Z. davyi rt
- Nwazi, isi** (Z)
Rhoicissus tridentata subsp. *tridentata* rt
- nwelele** (Z)
Lycopodium clavatum wpl
- Nyamathi, um** (Z)
Ekebergia capensis bk
- Nyamawempunzi, um** (Z)
Plectranthus grallatus rt
- Nyathelo, in** (Z) (also **nyathelo**)
Vernonia adoensis rt
- nyazangoma, black** (Z)
Prunus africana bk
- nyazangoma, white** (Z)
unknown 57 bk
- nyazangoma, red** (Z)
Rhus chirindensis bk
- Nyenya, u** (Z)
Rhamnus prinoides rt
- nyokaspinda** (Z)
Boscia albitrunca rt
- Nyongwane, i** (Z) (also **nyongwane**)
Corbichonia decumbens rt
Dicoma anomala rt
- nzimane** (Z)
Euclea natalensis rt
- Ompumelelo, un** (Z)
Macaranga capensis bk
- pahte-ea-ngaka** (S)
Hermannia depressa rt
- pamapuce** (Z)
Aspilia natalensis 1, st
Eclipta prostrata wpl
- pamba** (Z)
Balanites maughamii bk
Chlorophytum comosum wpl
Cyrtorchis arcuata rt
Diaphananthe millarii rt
Mystacidium capense rt
M. spp. rt
Tridactyle bicaudata rt
T. tridentata rt
- payabashemane** (S)
unknown 58 rt
- Pendulo, um** (Z)
Acalypha villicaulis rt
- pengulula** (Z)
Deinbollia oblongifolia rt
- pepelangeni** (Z)
Curtisia dentata bk
- Phafa, um** (Z)
Ziziphus mucronata subsp. *mucronata* bk
- Phahla, um** (Z),
Brachylaena discolor subsp. *discolor* 1, rt
Hippobromus pauciflorus rt
- Phahluka, isi** (Z)
Brachylaena discolor subsp. *discolor* 1, rt
Hippobromus pauciflorus rt
- Phakama, i** (Z) (also **phakama**)
Tiegheemia quinquenervia wpl
Viscum verrucosum wpl
- phamaphuce** (Z)
Aspilia natalensis 1, st
Eclipta prostrata wpl
- Phamba, i** (Z) (also **phamba**)
Balanites maughamii bk
Chlorophytum comosum wpl
Cyrtorchis arcuata rt
Diaphananthe millarii rt
Mystacidium capense rt
M. spp. rt
Tridactyle bicaudata rt
T. tridentata rt
- Phamepuce, u** (Z)
Aspilia natalensis 1, st
Eclipta prostrata wpl
- Phanda, um** (Z)
Lonchocarpus capassa bk
- Phaphe, aba** (Z)
*Pinus sp.** bk
- phate-ea-ngaka** (S)
Chenopodium sp. rt
Hermannia depressa rt
Malva parviflora * rt
- phateyangaka** (S)
Chenopodium sp. rt
Hermannia depressa rt
Malva parviflora * rt
- Phengulula, i** (Z) (also **phengulula**)
Deinbollia oblongifolia rt
- Phephelelangeni, u** (Z)
Curtisia dentata bk
- Phephetho, isi** (Z)
Siphonochilus aethiopicus rt
- Phicamagama, um** (X)
Buxus macowanii 1, fl
B. natalensis 1, fl
- Phimbi, um** (Z)
Garcinia livingstonei bk
- phindamshye** (Z)
Adenia gummifera var. *gummifera* st
- Phompho, um** (Z)
Scadoxus puniceus bb
- Phophoma, i** (Z) (also **phophoma**)
Secamone gerrardii rt
- Phumbulu, um** (Z)
Vitellariopsis dispar bk
V. marginata bk
- Phuphuma, i** (Z) (also **phuphuma**)
Ilex mitis st
Securidaca longipedunculata st
Thespesia acutiloba st
- pigabone** (Z)
Cephalaria humilis rt
- pigayibone** (Z)
Cephalaria humilis rt
- pikayiboni** (Z)
Cephalaria humilis rt
- Pila, im** (Z)
Callilepis laureola rt
- Pindamshaye, im** (Z) (also **pindamshaye**)
Adenia gummifera var. *gummifera* st
- pindamuva** (Z)
unknown 59 rt
- Piskayihlangulwa, im** (Z)
*Eucalyptus sp. ** bk
- poho-tsehla** (S)
Pachycarpus rigidus rt
Phytolacca heptandra rt
Xysmalobium undulatum rt
- pootshetla** (S)
Pachycarpus rigidus rt
Phytolacca heptandra rt
Xysmalobium undulatum rt
- popoma** (Z)
Secamone gerrardii rt
- pumbulu** (Z)
Vitellariopsis dispar bk
V. marginata bk
- Pundu, im** (Z) (also **pundu**)
Gasteria croucheri 1
- punyu** (Z)
Talinum caffrum rt
- punyuka** (Z)
Talinum caffrum rt
- Qalothi, um** (Z)
Strychnos henningsii bk
S. mitis bk
- Qhume, u** (Z) (also **qhume**)
Hippobromus pauciflorus rt
- Qonga, um** (X)
Cassipourea gerrardii bk
- Qongqo, u** (Z)
Burchellia hubalina bk
- Qongqo, i** (Z)
Burchellia hubalina bk
- Qonsi, i** (Z)
Eriosema salignum rt
- Qontsi, u** (Z) (also **qontsi**)
Eriosema cordatum rt
E. salignum rt
- Qunga, isi** (Z)
Cymbopogon excavatus rt, 1, st
C. marginatus rt, 1, st
C. plurinodis rt, 1, st
C. validus rt, 1, st
- Qwaningi, i** (Z)
Capparis brassii rt
C. tomentosa rt
- raadeboni** (S)
Cephalaria humilis rt
- rooi-storm** (A)
Rubia cordifolia subsp. *conotricha* rt
- Roselina, u** (Z) (also **roselina**)
Cinnamomum camphora bk
- Sahlulamanye, u** (Z) (also **sahlulamanye**)
Elaeodendron croceum bk
Pterocelastrus echinatus bk
P. rostratus bk
P. tricuspidatus bk
- sakchaan** (Z)
Euclea divinorum rt
E. undulata rt
- sakhe yedwa** (S)
unknown 60 bk
- saphulo** (Z)
Garcinia livingstonii bk
- sbaga** (Z)
Warburgia salutaris bk
- sbhaha** (Z)
Warburgia salutaris bk
- sdenda** (Z)
Maesa lanceolata rt
- sdumo** (Z)
Ilex mitis var. *mitis* bk
- sebelele** (S)
Osteospermum imbricatum subsp. *nervatum* 1, st
- sebelele** (S)
unknown 61 rt
- sedumo** (T)
Ilex mitis var. *mitis* bk
- sefo** (Z)
Faurea mcnaughtonii bk
F. saligna bk

- Sefu, isi (Z)**
Faurea mcnaughtonii bk
F. saligna bk
- Sehle, um (Z)**
Peltophorum africanum bk
- Sehlulamanye, u (Z)** (also **sehlulamanye**)
Elaeodendron croceum bk
Pterocelastrus echinatus bk
P. rostratus bk
P. tricuspidatus bk
- sekanama (S)**
Drimia elata bb
D. robusta bb
Tribulus terrestris bb
Urginea altissima bb
U. delagoensis bb
U. macrocentra bb
U. sanguinea bb
- sekgopha (S)**
Aloe microcantha l
- sekolopatas (S)**
Dioscorea sylvatica rt
- sekunda mahose (V)**
unknown 62 rt
- selengwe (Z)**
Gnidia kraussiana var. *kraussiana* rt
- selepane (S)**
unknown 63 rt
- Senge, um (Z)**
Cussonia spicata bk, st
- senokomaropa (S)**
Zanthoxylum capense rt
- sepula (Z)**
Garcinia livingstonei bk
- sesembane (Sh)**
unknown 64 rt
- Sethole, ama (Z)**
Mimusops caffra bk
M. obovata bk
Sideroxylon inerme bk
- setima mollo (S)**
Pentanisia prunelloides subsp. *prunelloides* rt
- Shaladilezinyoka, i (Z)**
Tulbaghia alliacea bb
T. spp. bb
- Shaqa, i (Z)** (also **shaqa**)
Pelargonium luridum rt
- Shekisane, um (Z)** (also **shekisane**)
Euclea divinorum rt
E. undulata rt
- shikwane (S)**
Catha edulis bk, l
- shilwane (S)**
unknown 65 st
- Shinga, i (Z)**
Xysmalobium undulatum rt
- shiritsi (V)**
Mucuna coriacea subpp. *irritans* rt
- Shisizwe, u (Z)** (also **shisizwe**)
Portulaca sp. rt
- shlabahlangane (Z)**
Cycnium racemosum rt
- shoba lenyathi (Z)**
Equisetum ramosissimum rt
- Shobalehashi, i (Z)**
Equisetum ramosissimum rt
- Shongwe, i (Z)** (also **shongwe**)
Asclepias spp. rt
Pachycarpus rigidus rt
P. spp. rt
Xysmalobium undulatum rt
- shwilieshwili (Z)**
Plumbago auriculata rt
- sibanku (Z)**
Ochna holstii bk
- sibindi sengwenya (Z)**
unknown 66 bk
- sidala (Z)**
Tephrosia marginella l, st
- sidikili (Z)**
Gnidia burchellii rt
G. cuneata rt
G. kraussiana var. *kraussiana* rt
G. spp. rt
- sidumo (Z)**
Ilex mitis var. *mitis* bk
- sihlenhle (Z)**
Euphorbia woodii wpl
- Silawengwe, um (Z)** (also **silawengwe**)
Gnidia kraussiana var. *kraussiana* rt
- silepe (Z)**
unknown 67 rt
- simanaye (Z)**
Ekebergia capensis bk
- sinama-senyonga (Z)**
Achyroopsis avicularis wpl
- Sinandlovu, um (Z)**
Mundulea sericea rt
- sindiyandiya (Z)**
Bersama lucens bk
B. stayneri bk
B. swinyi bk
B. tysoniana bk
Spermacoce natalensis bk
- singala salugazi (Z)**
Asclepias fruticosa rt
A. physocarpa rt
- Singalwesalukazi, u (Z)**
Asclepias fruticosa rt
A. physocarpa rt
- Sinini, isi (Z)** (also **sinini**)
Spilanthes mauritiana l, st
- sinwazi (Z)**
Rhoicissus tridentata subsp. *tridentata* rt
- sipha senyuko (Z)**
Achyroopsis aviculris wpl
- Siphawenyoka, um (Z)**
Achyroopsis avicularis wpl
- siphephetho (Z)**
Siphonochilus aethiopicus rt
- sigunga (Z)**
Cymbopogon excavatus rt, l, st
C. marginatus rt, l, st
C. plurinodis rt, l, st
C. validus rt, l, st
- sigunga si tokoloshe (Z)**
Dietes iridioides l, st
- sisefo (Z)**
Faurea mcnaughtonii bk
F. saligna bk
- sithundu (Z)**
Elaeodendron croceum bk
Ochna natalitia rt
- sitshetsane (V)**
Dioscorea dregeana rt
- sizo (Z)**
unknown 68 bk
- skanama (Z)**
Drimia elata bb
D. robusta bb
Tribulus terrestris bb
Urginea altissima bb
U. delagoensis bb
U. macrocentra bb
U. sanguinea bb
- skanama, white (S)**
Urginea sp. bb
- skilpad (Z)**
Dioscorea sylvatica rt
- skulpati (Z)**
Dioscorea sylvatica rt
- slaslabadiem (S)**
Chenopodium ambrosioides * l, st
- slonyane (Z)**
Vernonia adoensis rt
- snama (Z)**
Elaeodendron croceum bk
Maytenus acuminata bk
Priva cordifolia var. *abyssinica* rt
- snwazi (Z)**
Rhoicissus tridentata subsp. *tridentata* rt
- Solo, u (Z)** (also **solo**)
Albizia adianthifolia bk
- spahluka (Z)**
Brachylaena discolor subsp. *discolor* rt, l
Hippobromus pauciflorus rt
- spanku (Z)**
Ochna holstii bk
- spatluga (Z)**
Brachylaena discolor subsp. *discolor* l, rt
Hippobromus pauciflorus rt
- spele (T)**
unknown 69 bb
- sphephetho (Z)**
Siphonochilus aethiopicus rt
- stapuga (Z)**
Pulicaria scabra rt
- sukasamba (Z)**
Cymbopogon spp. rt, st
- Sukasihambe, u (Z)** (also **sukasihamba**)
Cymbopogon spp. rt, st
- Sukumbili, un (Z)** (also **sukumbili**)
*Chenopodium ambrosioides** l, st
Hypericum aethiopicum subsp. *aethiopicum* l, st
Senecio gregatus l, st
S. serratuloides var. *gracilis* l, st
- sulansula (Z)**
Eriospermum mackenii rt
E. sp. rt
Spermacoce natalensis rt
- sumuso owalapha wayongaphi (Z)**
Harpagophytum procumbens fr, rt
- Sununundu, u (Z)** (also **sununundu**)
Acalypha peduncularis rt
A. punctata rt
A. schinzii wpl
- Suzwane, um (Z)** (also **suzwane**)
Lippia javanica l, st
Tricalysia lanceolata l, st
- swazi (Z)**
Turraea obtusifolia l, st
- Swazi, u (Z)**
Turraea obtusifolia l, st
T. emetica bk
- tabazimbi (V)**
Brackenridgea zanguebarica rt
- tangazane (S)**
Gunnera perpensa rt
- thabatsindi (V)**
Brackenridgea zanguebarica rt
- Thaphuka, isi (Z)**
Pulicaria scabra rt
- thathayane (T)**
Heteropyxis natalensis rt
- Thathe, um (Z)**
Ptaeroxylon obliquum bk
- thaululo (V)**
Widdringtonia nodiflora rt
- Thende, isi (Z)**
Maesa lanceolata rt
- Thethe, i (Z)**
Polygala fruticosa rt
- Thibomvu, umu (Z)**
Protorhus longifolia bk
- Tholo, um (Z)**
Acacia caffra bk
- Thombothi, um (Z)**
Spirostachys africana bk
- Thuma, um (Z)**
Solanum aculeastrum fr
S. hermannii fr

- Thumelela, um** (Z)
Pleurostyliia capensis bk
- Thundu, isi** (Z)
Elaeodendron croceum bk
Ochna natalitia rt
- Thunduluka, um** (Z)
Ximenia caffra var. *natalensis* rt
- Thunyelelwa, um** (Z)
Pleurostyliia capensis bk
- thunzikulu** (Z)
Mimusops sp. bk
- Thwazi, um** (Z)
Rhoicissus rhomboidea rt
R. tridentata subsp. *tridentata* rt
- Tindili, in** (Z)
Entada rheedii sd
- titikwane** (V)
unknown 70 bb
- Tiye, u** (Z)
Hippobromus pauciflorus rt
- tjanibeswe** (S)
Dianthus mooiensis subsp. wpl
- tlhatlhabadimo** (T)
*Chenopodium ambrosioides** l, st
- Tlokwana la tsela** (S)
Dianthus basuticus subsp. wpl
D. mooiensis subsp. wpl
- Tolwane, in** (Z)
Elephantorrhiza elephantina rt
- tomboti** (Z)
Spirostachys africana bk
- tshanibezwe** (Z)
Dianthus mooiensis subsp. wpl
- tshidzungu** (Sh)
Ilex mitis var. *mitis* bk
Protea gaguedi fl, rt
- tshokhalasile** (S)
Dianthus mooiensis subsp. wpl
- tshukwane** (S)
unknown 71 rt
- Tshungu, in** (Z)
Momordica foetida l, st
- Tshwalabenyoni, u** (Z) (also **tshwalabenyoni**)
Burchellia bubalina bk
- tshwetshwe** (Z)
unknown 72 rt
- tsoetla-e-nyenyane** (S)
Argyrobium tuberosum rt
- tswetlane** (S)
Argyrobium tuberosum rt
- Tuma, in** (Z)
Solanum aculeastrum fr
S. hermannii fr
- Tumemncane, in** (Z)
Solanum panduriforme fr
- Twalalubombo, in** (Z)
Rubia cordifolia subsp. *conotricha* rt
- ubande** (Z)
Greyia sutherlandii bk
- ubane** (Z)
Agapanthus africanus rt
A. campanulatus rt
A. praecox subsp. *orientalis* rt
- uBangalala** (Z)
see Bangalala, u
- uBani** (Z)
see Bani, u
- uBhoqo** (Z)
see Bhoqo, u
- uBhubhubhu** (Z)
see Bhubhubhu, u
- uBoqo** (Z)
see Boqo, u
- ubovimba** (Z)
Withania somnifera rt
- ubuHlungubendlovu** (Z)
see Hlungubendlovu, ubu
- ubuHlungwana** (Z)
see Hlungwana, ubu
- uBulawu** (Z)
see Bulawu, u
- ubuLibazi** (Z)
see Libazi, ubu
- ubuVimbo** (Z)
see Vimbo, ubu
- ucume** (Z)
Hippobromus pauciflorus rt
- uDakwa** (Z)
see Dakwa, u
- uDelunina** (Z)
see Delunina, u
- uDlutshana** (Z)
see Dlutshana, u
- uDwendwelencuba** (Z)
see Dwendwelencuba, u
- uDwendwelwegcuba** (Z)
see Dwendwelwegcuba, u
- udwendweni** (Z)
Crocasmia aurea bb
C. paniculata bb
Dierama pendulum bb
Eulophia cucullata rt
E. spp. rt
Gladiolus dalenii bb
G. sericeo-villosus forma *sericeo-villosus* bb
- uFudu** (Z)
see Fudu, u
- ugashi** (Z)
Berkheya multijuga rt
- uGebeleweni** (Z)
see Gebeleweni, u
- uGibisila** (Z)
see Gibisila, u
- uGibonisele** (Z)
see Gibonisele, u
- ugini** (Z)
unknown 73 st
- uGobandlovu** (Z)
see Gobandlovu, u
- uGobho** (Z)
see Gobho, u
- uGodide** (Z)
see Godide, u
- ugopo** (Z)
Gunnera perpensa rt
- uGwayana** (Z)
see Gwayana, u
- uHlabahlangane** (Z)
see Hlabahlangane, u
- uhlakahla** (Sw)
Agapanthus africanus rt
- uHlonyane** (Z)
see Hlonyane, u
- uHluguwendlovu** (Z)
see Hluguwendlovu, u
- uhlungu** (Z)
Strophanthus speciosus fr
- uHlungu-lungu** (Z)
see Hlungu-lungu, u
- uHlungubendlovu** (Z)
see Hlungubendlovu, u
- ukashi** (Z)
Berkheya multijuga rt
- uKhalimele** (Z)
see Khalimele, u
- ukhathwa** (Z)
unknown 74 rt
- uLoselina** (Z)
see Loselina, u
- uMababaza** (Z)
see Mababaza, u
- umaBelejongosi** (Z)
see Belejongosi, umu
- uMabelejongosi** (Z)
see Mabelejongosi, u
- uMabopha** (Z)
see Mabopha, u
- uMabusane** (Z)
see Mabusane, u
- uMadilika** (Z)
see Madilika, u
- uMadlozana** (Z)
see Madlozana, u
- uMadlozanomncane** (Z)
see Madlozanomncane, u
- uMaguqu** (Z)
see Maguqu, u
- uMahesakobomvu** (Z)
see Mahesakobomvu, u
- uMahesakomhlope** (Z)
see Mahesakomhlope, u
- umaHlabekufeni** (Z)
see Hlabekufeni, uma
- uMahlabekufeni** (Z)
see Mahlabekufeni, u
- uMahlanganisa** (Z)
see Mahlangqisa, u
- umahlogolosi** (Z)
Urginea altissima bb
U. spp. bb
- uMahlongolozi** (Z)
see Mahlongolozi, u
- uMahogwe** (Z)
see Mahogwe, u
- uMakhothigobile** (Z)
see Makhothigobile, u
- uMalala** (Z)
see Malala, u
- umaLuleka** (Z)
see Luleka, uma
- uManono** (X)
see Manono, u
- uManzamnyama** (Z)
see Manzamnyama, u
- uMaphipha** (Z)
see Maphipha, u
- uMaphiphakhubalo** (Z)
see Maphiphakhubalo, u
- uMaphiphintelezi** (Z)
see Maphiphintelezi, u
- uMaqadini** (Z)
see Maqadini, u
- umasangana** (Z)
unknown 75 st
- uMaswelisweli** (Z)
see Maswelisweli, u
- uMathanjana** (Z)
see Mathanjana, u
- uMathinta** (Z)
see Mathinta, u
- uMathithibala** (Z)
see Mathithibala, u
- uMathunga** (Z)
see Mathunga, u
- uMathunzini** (Z)
see Mathunzini, u
- uMathunziniwezintaba** (Z)
see Mathunziwezintaba, u
- uMatshintshine** (Z)
see Matshintshine, u
- uMavumbuka** (Z)
see Mavumbuka, u
- uMayime** (Z)
see Mayime, u
- uMazwende** (Z)
see Mazwende, u
- uMazwendomnyama** (Z)
see Mazwendomnyama, u
- umBande** (Z)
see Bande, um
- uMbesa** (Z)
see Mbesa, u
- umBethe** (Z)
see Bethe, um
- umBhandu** (Z)
see Bhandu, um

- umBinda** (Z)
see Binda, um
- umbitchi khubalo** (Z)
unknown 76 bk
- umBola** (Z)
see Bola, um
- umBovana** (Z)
see Bovana, um
- umchambalala** (Z)
unknown 77 rt
- umCumane** (Z)
see Cumane, um
- umDabu** (Z)
see Dabu, um
- umDakane** (Z)
see Dakane, um
- umDewehlati** (Z)
see Dewehlati, um
- umDlandlovu** (X)
see Dlandlovu, um
- umDlangwenya** (Z)
see Dlangwenya, u
- umDlavusa** (Z)
see Dlavusa, um
- umDlebe** (Z)
see Dlebe, um
- umDondwani** (Z)
see Dondwani, um
- umDubu** (Z)
see Dubu, um
- umduze** (Z)
Crinum bulbispermum bb
C. delagoense bb
C. macowanii bb
C. moorei bb
C. sp. bb
- uMembeza** (Z)
see Membeza, u
- uMemeziobomvu** (Z)
see Memeziobomvu, u
- uMemezomhlope** (Z)
see Memezomhlope, u
- umFanozacile** (Z)
see Fanozacile, um
- umFazothethayo** (Z)
see Fazothethayo, um
- umFusamvu** (Z)
see Fusamvu, um
- umGadankawu** (Z)
see Gadankawu, um
- umGalagala** (X)
see Galagala, um
- umgamazi** (Z)
Acacia robusta subsp. *clavigera* bk
A. robusta subsp. *robusta* bk
- umGanu** (Z)
see Ganu, um
- umGogawezinhlanya** (Z)
see Gogawezinhlanya, um
- umGwenya** (Z)
see Gwenya, um
- umGxamu** (Z)
see Gxamu, um
- umhlabelo-we-qolo** (Z)
Blighia unijugata bk
- umHlabelo** (Z)
see Hlabelo, um
- umHladlothi** (X)
see Hladlothi, um
- umHlahlankosi** (Z)
see Hlahlankosi, um
- umHlala** (Z)
see Hlala, um
- umHlalamagwababa** (Z)
see Hlalamagwababa, um
- umhlalimakwaba** (Z)
Bridelia micrantha bk
- umHlambamanzi** (Z)
see Hlambamanzi, um
- umHlangula** (Z)
see Hlangula, um
- umHlele** (Z)
see Hlele, um
- umHlonishwa** (Z)
see Hlonishwa, um
- umHlonyane** (Z)
see Hlonyane, um
- umHlunguhlungu** (Z)
see Hlunguhlungu, um
- umHluthi** (Z)
see Hluthi, um
- umHlwazi** (Z)
see Hlwazi, um
- umHlwazimamba** (Z)
see Hlwazimamba, um
- uMinya** (Z)
see Minya, u
- uMinyela** (Z)
see Minyela, u
- umJuluka** (Z)
see Juluka, um
- umkadankawu** (Z)
Albizia adianthifolia bk
- umKele** (Z)
see Kele, um
- umkhabamasi** (Z)
Rauvolfia caffra bk
- umKhalapanga** (Z)
see Khaphalapanga, um
- umKhamba** (Z)
see Khamba, um
- umKhanyakude** (Z)
see Khanyakude, um
- umKhiwane** (Z)
see Khiwane, um
- umKhokha** (Z)
see Khokha, um
- umKhondweni** (Z)
see Khondweni, um
- umKhuhlu** (Z)
see Khuhlu, um
- umKhumizo** (Z)
see Khumizo, um
- umKhunye** (X)
see Khunye, um
- umKhuze** (Z)
see Khuze, um
- umKhwangu** (Z)
see Khwangu, um
- umkomasi** (Z)
Acacia robusta subsp. *clavigera* bk
A. robusta subsp. *robusta* bk
- umLahlankosi** (Z)
see Lahlankosi, um
- umLahleni** (Z)
see Lahleni, um
- umLahlenisefile** (Z)
see Lahlenisefile, um
- umlatleni** (Z)
Curtisia dentata bk
- umLomomnandomncane** (Z)
see Lomomnandomncane, um
- umLulama** (Z)
see Lulama, um
- umLulama-omncane** (Z)
see Lulama-omncane, um
- umLulama-womfula** (Z)
see Lulama-womfula, um
- umLulamomkhulu** (Z)
see Lulamomkhulu, um
- umLunge** (Z)
see Lunge, um
- umLuthu** (Z)
see Luthu, um
- umNduze** (Z)
see Nduze, um
- umNgamanzi** (Z)
see Ngamanzi, um
- umNono** (Z)
see Nono, um
- umnukela mbiba** (Z)
Clausena anisata rt
- umNukelambiba** (Z)
see Nukelambiba, um
- umNungumabele** (Z)
see Nungumabele, um
- umNungwane** (Z)
see Nungwane, um
- umNyamathi** (Z)
see Nyamathi, um
- umNyamawempunzi** (Z)
see Nyamawempunzi, um
- umnyiso** (Z)
unknown 78 rt
- umnyokiziphinda** (Z)
Boscia albitrunca rt
- uMondi** (Z)
see Mondi, u
- umoya wovungu** (Z)
unknown 79 bk
- uMoyawezwe** (Z)
see Moyawezwe, u
- umPendulo** (Z)
see Pendulo, um
- umPhafa** (Z)
see Phafa, um
- umPhahla** (Z)
see Phahla, um
- umPhanda** (Z)
see Phanda, um
- umPhicamagama** (Z)
see Phicamagama, um
- umPhimbi** (Z)
see Phimbi, um
- umPhompho** (Z)
see Phompho, um
- umPhumbulu** (Z)
see Phumbulu, um
- umphumeleli** (Z)
Macaranga capensis bk
- uMpikayiboni** (Z)
see Mpikayiboni, u
- uMpunyu** (Z)
see Mpunyu, u
- umQalothi** (Z)
see Qalothi, um
- umQonga** (X)
see Qonga, um
- umqonqo** (Z)
Burchellia bubalina bk
- umSchle** (Z)
see Schle, um
- umSenge** (Z)
see Senge, um
- umShekisane** (Z)
see Shekisane, um
- umSilawengwe** (Z)
see Silawengwe, um
- umSinandlovu** (Z)
see Sinandlovu, um
- umSiphawenyoka** (Z)
see Siphawenyoka, um
- umSuzwane** (Z)
see Suzwane, um
- umThathe** (Z)
see Thathe, um
- umTholo** (Z)
see Tholo, um
- umThombothi** (Z)
see Thombothi, um
- umThuma** (Z)
see Thuma, um
- umThumelela** (Z)
see Thumelela, um
- umThunduluka** (Z)
see Thunduluka, um

- umThunyelelwa** (Z)
see Thunyelelwa, um
- umThwazi** (X)
see Thwazi, um
- uMululuka** (Z)
see Mululuka, u
- umuNga** (Z)
see Nga, umu
- uMusa** (Z)
see Musa, u
- umuThibomvu** (Z)
see Thibomvu, umu
- umuvungazi** (Z)
Pterocarpus angolensis bk
Trema orientalis bk
- umValasangweni** (Z)
see Valasangweni, um
- umVangazi** (Z)
see Vangazi, um
- umvete** (Z)
Boscia albitrunca rt
B. foetida subsp. *rehmanniana* rt
Eragrostis plana rt
- umVithi** (Z)
see Vithi, um
- umVongothi** (Z)
see Vongothi, um
- umVuma** (Z)
see Vuma, um
- umVuthuza** (Z)
see Vuthuza, um
- umVuthwemini** (Z)
see Vuthwemini, um
- umWelela** (Z)
see Welela, um
- umYazangomobomvu** (Z)
see Yazangomobomvu, um
- umYenye** (Z)
see Yenye, um
- umZaneno** (Z)
see Zaneno, um
- umZilanyoni** (Z)
see Zilanyoni, um
- umZimuka** (Z)
see Zimuka, um
- umZiwalapha-ungaphi** (Z)
see Ziwalapha-ungaphi, um
- umZungulu** (Z)
see Zungulu, um
- umZungulwane** (Z)
see Zungulwane, um
- uNakile** (Z)
see Nakile, u
- unDabingehlele** (Z)
see Dabingehlele, un
- unDiyaza** (Z)
see Diyaza, un
- unDonganazibomvana** (Z)
see Donganazibomvana, un
- unDwendweni** (Z)
see Dwendweni, un
- unGazine** (Z)
see Gazine, un
- unGibonisele** (Z)
see Gibonisele, un
- uNgqengendlela** (Z)
see Ngqengendlela, u
- uNgwaleni** (Z)
see Ngwaleni, u
- unHlangothi** (Z)
see Hlangothi, iu
- uNkungwini** (Z)
see Nkungwini, u
- unOmpumelelo** (Z)
see Ompumelelo, un
- unSukumbili** (Z)
see Sukumbili, un
- uNsukumbili** (Z)
see Nsukumbili, u
- unukambiba** (Z)
Clausena anisata rt
- uNukane** (Z)
see Nukane, u
- unWele** (Z)
see Wele, un
- unYawolwenkukhu** (Z)
see Yawolwenkukhu, un
- uNyenya** (Z)
see Nyenya, u
- uphagama** (Z)
Tieghemia quinquenervia wpl
Viscum verrucosum wpl
- uPhamepuce** (Z)
see Phamepuce, u
- uPhephelelangeni** (Z)
see Phephelelangeni, u
- uQhume** (Z)
see Qhume, u
- uQongqo** (Z)
see Qongqo, u
- uQontsi** (Z)
see Qontsi, u
- uquama mahlombe** (Z)
unknown 80 bk
- uRoselina** (Z)
see Roselina, u
- uSahlulamanye** (Z)
see Sahlulamanye, u
- uSehlulamanye** (Z)
see Sehlulamanye, u
- usenge** (Z)
Cussonia spicata bk, st
- uShisizwe** (Z)
see Shisizwe, u
- uSingalwesalukazi** (Z)
see Singalwesalukazi, u
- uSolo** (Z)
see Solo, u
- uSukasihambe** (Z)
see Sukasihambe, u
- uSununundu** (Z)
see Sununundu, u
- usuzwane** (Z)
Lippia javanica l, st
Tricalysia lanceolata l, st
- uSwazi** (Z)
see Swazi, u
- uTiye** (Z)
see Tiye, u
- uTshwalabenyoni** (Z)
see Tshwalabenyoni, u
- utyanibswa** (Z)
Dianthus mooiensis subspp. wpl
- uvalo** (Z)
unknown 81 bk
- uvangasi** (Z)
Pterocarpus angolensis bk
Trema orientalis bk
- uVelabahleke** (Z)
see Velabahleke, u
- uVendle** (Z)
see Vendle, u
- uVimbukhalo** (Z)
see Vimbukhalo, u
- uVovo** (Z)
see Vovo, u
- uVukakwabafilikhubalo** (Z)
see Vukakwabafilikhubalo, u
- uVukwababa** (Z)
see Vukwababa, u
- uVukwabafile** (Z)
see Vukwabafile, u
- uVumebomvu** (Z)
see Vumebomvu, u
- uVumomhlope** (Z)
see Vumomhlope, u
- uvungalumoya** (Z)
unknown 82 bk
- uXhapozi** (Z)
see Xhapozi, u
- uZangume** (Z)
see Zangume, u
- uZekane** (Z)
see Zekane, u
- uZeneke** (Z)
see Zeneke, u
- uZililo** (Z)
see Zililo, u
- uZinhla** (Z)
see Zinhla, u
- Valasangweni, um** (Z)
Gardenia thunbergia rt
G. volkensii subsp. *spatulifolia* rt
- Vangazi, um** (Z)
Pterocarpus angolensis bk
Trema orientalis bk
- Velabahleke, u** (Z) (also **velabahleka**)
Celosia trigyna wpl
Crotalaria spp. rt
- velasangweni** (Z)
Gardenia thunbergia rt
G. volkensii subsp. *spatulifolia* rt
- velasmoyeni** (Z)
unknown 83 rt, st
- Vendle, u** (Z) (also **vendhle**)
Pelargonium luridum rt
- Vimbo, ubu** (Z)
Withania somnifera rt
- Vimbukhalo, u** (Z) (also **vimbokhalo**)
Convolvulus sagittatus subspp. rt
Ipomoea crassipes rt
- Vithi, um** (Z)
Boscia albitrunca rt
B. foetida subsp. *rehmanniana* rt
Eragrostis plana rt
- Vongothi, um** (Z)
Kigelia africana fr
- Vovo, u** (Z)
Schotia brachypetala bk
- vugamafile** (Z)
Myrothamnus flabellifolia l, st
- vuka kubafile** (Z)
unknown 85 bk
- vuka khubalo** (Z)
unknown 84 bk
- vuka-kwa-bafile** (Z)
Myrothamnus flabellifolia l, st
- vukakwabafileyo** (Z)
Myrothamnus flabellifolia l, st
- Vukakwabafilikhubalo, u** (Z)
Rapanea melanophloeos bk
- Vukwababa, u** (Z)
Myrothamnus flabellifolia l, st
- Vukwabafile, u** (Z)
Myrothamnus flabellifolia l, st
- vulakuvaliwe** (Z)
Podocarpus henkelii bk
- vuma, white** (Z)
Synaptolepis kirkii rt
- vuma, red** (Z)
Pappea capensis rt
- Vuma, um** (Z)
Turraea floribunda rt
- Vumebomvu, u** (Z)
Pappea capensis rt
- Vumelwane, isi** (Z) (also **vumelewana**)
Hypericum aethiopicum subsp. *aethiopicum* wpl
- Vumomhlope, u** (Z)
Synaptolepis kirkii rt
- vungulamoya** (Z)
Trichilia dregeana bk
T. emetica bk
- vungulomo** (Z)
Trichilia dregeana bk
T. emetica

- Vuthuza, um (Z)** (also **vuthuza**)
Kalanchoe sp. l, st
Knowltonia bracteata l, st
- Vuthwemini, um (Z)** (also **vutwamini**)
Canthium inerme rt
- Wele, un (Z)**
Lycopodium clavatum wpl
- Welela, um (Z)**
Tulbaghia alliacea bb
T. ludwigiana bb
T. simmleri bb
- wezifo zonge (Z)**
 unknown 86 rt
- Wozawoza, i (Z)** (also **wozawoza**)
Cymbopogon spp. rt, st
- xaxabulane (Z)**
Smilax anceps rt
- Xhaphozi, u (Z)**
Ranunculus multifidus l, st
- xidomeja (Sh)**
 unknown 87 rt
- Yathelo, in (Z)**
Vernonia adoensis rt
- Yawolwenkukhu, un (Z)**
Pelargonium luridum rt
- yazangoma, red (Z)**
Rhus chirindensis bk
- yazangoma, black (Z)**
Prunus africana bk
- Yazangomelimnyama, in (Z)**
Prunus africana bk
- Yazangomobomvu, um (Z)**
Rhus chirindensis bk
- Yenye, um (Z)**
Rhamnus prinoides rt
- Yokiziphinda, in (Z)**
Boscia albitrunca rt
- zagane (Z)**
Polygala hottentotta rt
- zaneke (Z)**
Haemanthus albiflos bb
H. coccineus bb
H. deformis bb
H. spp. bb
- Zaneno, um (Z)** (also **zaneno**)
Olinia radiata bk
- Zangume, u (Z)** (also **zangume**)
Helichrysum acutatum rt
- Zaza, i (Z)**
Behnia reticulata rt
- Zekane, u (Z)** (also **zekane**)
Polygala hottentotta rt
- Zeneke, u (Z)**
Haemanthus albiflos bb
- H. coccineus* bb
H. deformis bb
H. spp. bb
- Zibu, i (Z)**
Nymphaea nouchali wpl
N. spp. wpl
- Zilanyoni, um (Z)**
Croton sylvaticus bk
- Zililo, u (Z)**
Stapelia gigantea wpl
- Zimuka, um (Z)** (also **zimuka**)
Phytolacca dioica rt
- Zinhla, u (Z)** (also **zinhla**)
Celtis mildbraedii bk
- Ziwalaphungaphi, um (Z)**
Harpagophytum procumbens fr, rt
- zomaga (Z)**
 unknown 88 bk
- zukela (Z)**
 unknown 89 l, st
- Zungulu, um (Z)**
Dalbergia obovata st
- Zungulwane, um (Z)**
Proboscidea fragrans fr
- zwane (Z)**
 unknown 90 rt