

An aerial photograph of a rugged, mountainous landscape. The terrain is dark and textured, with numerous cracks and ridges. A small town or village is visible in the lower-left quadrant, consisting of several small, light-colored buildings. The text "kwena malapo" is overlaid in blue, and "to belong to the city" is overlaid in white below it. A small, dark, circular object is visible in the center of the image, possibly a hole or a small pond.

kwena malapo

to belong to the city

tarvin grant

Front cover:

[Map of Johannesburg](#)

[maps.google.com](#)

*Figure 1: Kwena Malapo in context of greater
Johannesburg*

Declaration

I, Taryn Ann Grant (0405722A), am a student registered for the course Master of Architecture (Professional) in the year 2013.

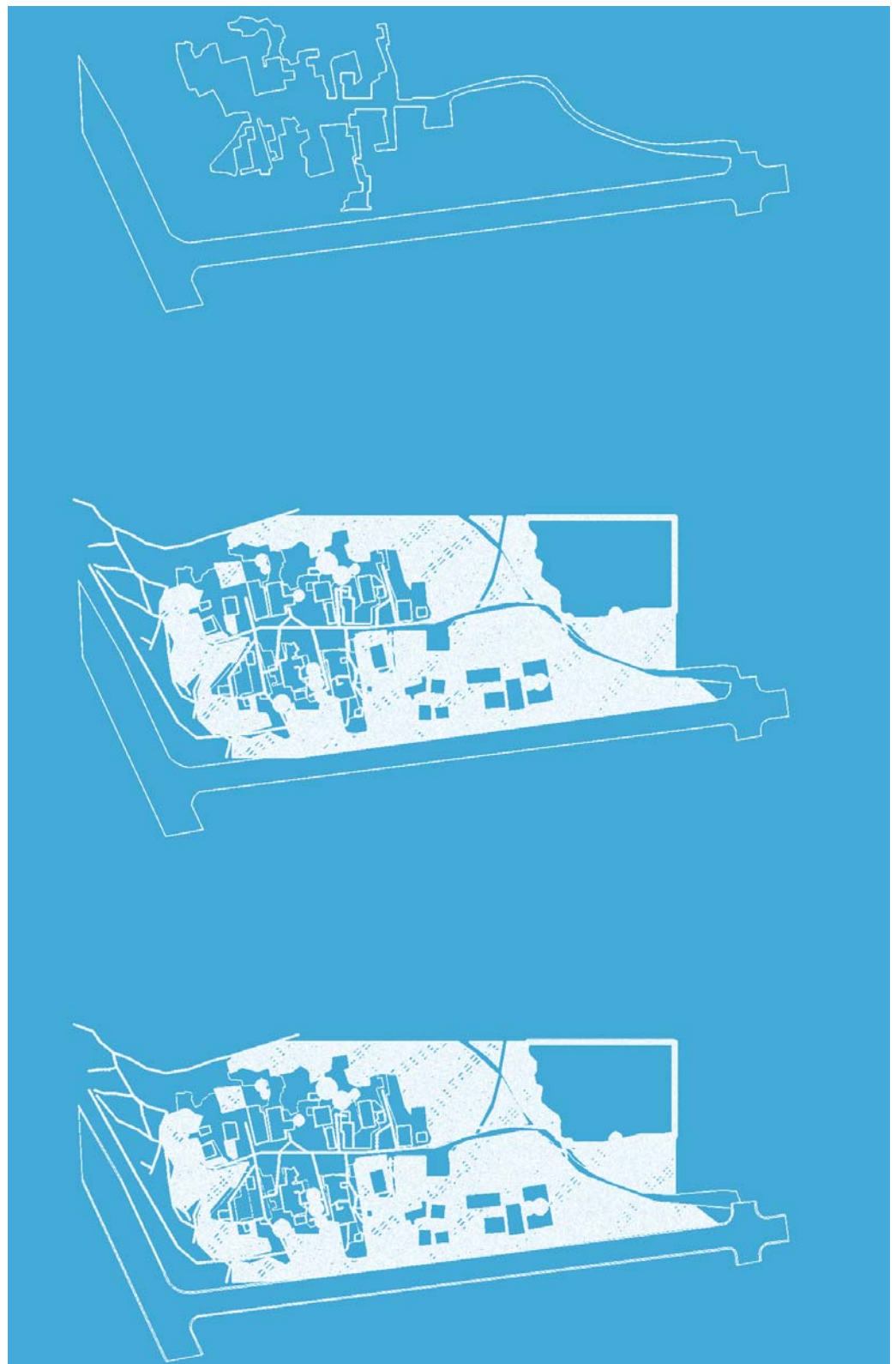
I hereby declare the following:

I am aware that plagiarism (the use of someone else's work, without permission and/or without acknowledging the original sources) is wrong. I confirm that the work submitted for assessment for the above course is my own unaided work, except where I have explicitly stated otherwise. I have followed the required conventions in referencing thoughts, ideas, and visual materials of others. For this purpose I have referred to the Graduate School of Engineering and the Built Environment style guide. I understand that the University of the Witwatersrand may take disciplinary action against me if there is a belief that this is not my unaided work or that I have failed to acknowledge the source of the ideas or words in my own work

All artworks and images are by the author unless otherwise specified.

Table of Contents

introduction	
personal Introduction	20
thesis topic Introduction	22
kwena malapo	
community and community theory	29
a community of self-reliance	52
a community facing relocation	63
theoretical response	
landmarks	75
precedent studies	83
cradle city	
proposed urban design framework	103
kwena malapo in cradle city	109



Right:

Initial analytical layout

By author

Figure 2: This shows the access to and the layout of the informal settlement which is the focus of this thesis



Table of Contents

developing the brief	
theoretical considerations	113
site	119
Programme	125
architectural language	
scale	131
structure	135
materiality	139
the building	
plans	143
sections	145
elevations	147
renders	159

Left:

An original workers house

By author

Figure 3: A photo showing the original workers rooms for the kwena malapo farm

Table of Contents

<hr/>	
technology	
brief for technoology	151
<hr/>	
conclusion	
conclusion	155
<hr/>	
bibliography	
written refernces	159

Right:

A long drop
By author

Figure 4: A photo showing that residents don't even have access to basic sanitation





List of Figures

figure 01	01	figure 05	21	figure 09	27
maps.google.com Map of Johannesburg Kwena Malapo in context of greater Johannesburg		By author The outside area used for daily activity		www.landesa.org Showing the improvements that land rights can make to poor communitites	
figure 02	05	figure 06	23	figure 10	29
By author This shows the access to and the layout of the informal settlement which is the focus of this thesis		By author One of the most vulnerable groups in Kwena Malapo		By author Looking at the physical and social issues that Kwena Malapo face	
figure 03	06	figure 07	25	figure 11	30
By author A photo showing the original workers rooms for the kwena malapo farm		By author Showing Kwena Malapo in relation to Lanseria aiport a representation of commercial opportunity		By author This photo shows the distinction between the vulnerable community and the fenced off areas	
figure 04	09	figure 08	26	figure 12	34
By author A photo showing that residents don't even have access to basic sanitation		By author Showing Kwena Malapo and the surrounding informal settlements		University of Wits, Urban planning GIS database he development of Kwena Malapo into an infirmal settlemnt over the last 9 years	

figure 13	35	figure 17	45	figure 21	52
By author <i>This seemingly idyllic photo shows that social aspects can have a further reaching...</i>		By author <i>The makeshift wasjng lines and found material create testure and defined areas in the community ms</i>		By author <i>xtra maths and english lessons on a Saturday try to compensate for the bad education these children receive</i>	
figure 14	39	figure 18	47	figure 22	52
By author <i>Different groups of people in the community are more vulnerable than others</i>		By author <i>This image shows the very close quarters that the residents of Kwena Malapo live in</i>		By author <i>Unfortunately due to resources and the voluntary basis of this project only a limtted number of children are able to attend.</i>	
figure 15	41	figure 19	48	figure 23	54
By author <i>Social aspects can have a further reaching effect han any physical circumstance.</i>		By author <i>The original farm dwellings have been extendedadding a more</i>		By author <i>Some of the dwellings have extended coverings to try and extend the usable living space, especially in hot and wet weather</i>	
figure 16	42	figure 20	50	figure 24	56
By author <i>No running water means a long walk and long daily chores for the children that should be doing school work once they return home from school.</i>		By author <i>One of the services that the community has very restricted access to is slowly becoming delapidated</i>		By author <i>An example of the initial feedback from the community outlining their basic needs and issues in hot and wet weather</i>	

List of Figures

figure 25	61	figure 29	63	figure 33	70
By author <i>The closest sports club is a private club near dainfern which is 13.6km away and unaffordable for the majority</i>		www.impumelelo.org.za <i>Skills training will help the development of Kwena Malapo</i>		Adrian Frith - adrianfrith.com <i>This map shows by race the patterns of settlement in and around Johannesburg</i>	
figure 26	61	figure 30	63	figure 34	71
By author <i>The closest library is 12km away in Olivedale</i>		www.lgprecision.co.za <i>Skills development will help to build more job opportunity and an economic growth in and around the community.</i>		Adrian Frith - adrianfrith.com <i>The overlay shows how the relocation of informal settlements can still be classified as a racial</i>	
figure 27	61	figure 31	65	figure 35	69
By author <i>The closest home affairs department is 17.1km from Kwena Malapo</i>		<i>This map shows where the governmental settlement ministry intends to move the residents of Kwena Malapo</i>		By author <i>This house shows a level of investment and permanence to Kwena Malapo</i>	
figure 28	61	figure 32	67	figure 36	74
By author <i>The closest private healthcare which is unaffordable is Olivedale Clinic at 13.6km</i>		Sowetan Live <i>This is the response of the psychological and emotional impact of relocation of people. Lion Park settlement soon</i>		By author <i>A rusted watertank</i>	

figure 37	75	figure 41	79	figure 45	88
By author		By author		www.noeroarchitects.com sketched over by author	
<i>A map showing the long drops in Kwena Malapo</i>		<i>This shows the community hub for Kwena Malapo as a minor landmark</i>		<i>This sketch shows a hard edge toward the community making the building an introspective one</i>	
figure 38	75	figure 42	81	figure 46	88
By author		By author		www.noeroarchitects.com sketched over by author	
<i>A typical section of the longdrops that are a contribution to poor living conditions</i>		<i>The community hub can also be a contributing element to economic activity in the Cradle City Development</i>		<i>Looking at the great volumes of unused space, possible typical for a museum building</i>	
figure 39	75	figure 43	83	figure 47	90
By author		Kevin Lynch		www.noeroarchitects.com sketched over by author	
<i>A process of access and use of water</i>		<i>This diagram illustrates the visual presence of elements in the city as a physical gesture</i>		<i>These sections show firstly the missed opportunity for collection of solar and water energy...</i>	
figure 40	76	figure 44	86	figure 48	91
Kevin Lynch		www.noeroarchitects.com		www.noeroarchitects.com	
<i>Looking at edges, boundaries, nodes and landmarks in the city</i>		<i>External View of the museum</i>		<i>one of the sculptural installations reminiscent of the storage boxes from Red Location, vastly scaled</i>	

List of Figures

figure 49	92	figure 53	96	figure 57	101
www.noeroarchitects.com sketched over by author <i>The colours of the materials of the building make it stand out from the buildings around it</i>		Urban Think Tank designboom.com <i>This shows different aspects that were considered through the design</i>		Urban Think Tank designboom.com sketched over by author <i>A visual connection is kept with the vertical design of the building</i>	
figure 50	92	figure 54	98	figure 58	101
www.noeroarchitects.com sketched over by author <i>The linear layout of the urban plan is used as the driving design element in the plan for the museum</i>		By author <i>The favela with the open areas circled shows the high density fabric</i>		Urban Think Tank designboom.com sketched over by author <i>Programme is packed tightly into the building but also...</i>	
figure 51	93	figure 55	98	figure 59	103
www.noeroarchitects.com sketched over by author <i>The building on the middle of the site seems to distance...</i>		By author <i>highlighting the swampy unsafe area that was treated, changed and is now useful and safe</i>		Urban Think Tank designboom.com <i>Think Tank used every opportunity to create useful community space and use it for greenery and growing food...</i>	
figure 52	94	figure 56	98	figure 60	103
Urban Think Tank designboom.com <i>A view of the community hub in it's context</i>		Urban Think Tank designboom.com <i>A plan showing the building extending into the community and the dwellings 'intruding'... buildingand is now useful and safe access to basic sanitation</i>		Urban Think Tank designboom.com <i>Water collection services the building as well as... ering the urban farms Favela in urban farms</i>	

figure 61	104	figure 65	109	figure 69	118
Urban Think Tank designboom.com <i>Think Tank used every opportunity to create useful community space and...</i>		By author <i>The first sketch shows the proposed road network and the second shows the Location of Kwena Malapo adjacent to the development</i>		By author <i>The informal settlement was also studied to gauge social nuances that should be sensitively dealt with in design</i>	
figure 62	105	figure 66	110	figure 70	119
GAPP Architects and Urban Designers et al <i>The area around Lanseria Airport being developed as a new economic urban hub</i>		GAPP Architects and Urban Designers et al <i>The three main drawing centres proposed for Cradle City</i>		By author <i>Sections were developed to analyse what areas are considered private and which areas become multifunctional</i>	
figure 63	106	figure 67	113	figure 71	120
By author <i>These sketches show the basic extents of the development and the proposed green areas within it</i>		By author <i>Kwena Malapo location within the Cradle City Development shows that they are not apart of it but can...</i>		By author <i>The proposed site for the Kwena Malapo community hub</i>	
figure 64	107	figure 68	116	figure 72	122
GAPP Architects and Urban Designers et al <i>The red block shows the Cradle City development location in relation to the Cradle of Mankind</i>		By author <i>Elements of Kwena Malapo that need to be addressed were used to map appropriate programmes and their function to community issues</i>		By author <i>Analysing the workings of the settlement helped to decide on an appropriate placing for the new community centre</i>	

List of Figures

figure 73	124	figure 77	130	figure 81	136
By author <i>Kwena Malapo was mapped to reveal different patterns and rhythms that occur in the community</i>		By author <i>The programme was mapped in terms of privacy needs which generated layout associat</i>		By author <i>The building developed in scale from the use of the individual dwelling scaled units formed together...</i>	
figure 74	125	figure 78	131	figure 82	138
By author <i>The mapping helped to guide where an appropriate positioning of the new community centre should be</i>		By author <i>The programme was cenented and sized as defining process for the design</i>		By author <i>The described conversion and integration of two scales</i>	
figure 75	126	figure 79	134	figure 83	139
By author <i>Growing one's own food could help the residents of Kwena Malapo to be more self reliant to some extent but they lack that proper skills and resources</i>		By author <i>The structure is divided into three components, the base, the shacks and the shelter</i>		By author <i>the average scales taken from the settlement</i>	
figure 76	128	figure 80	135	figure 84	139
By author <i>The programme was further developed by mapping around related issues and activites</i>		By author <i>The buildings is highly packed with programme to ensure nor wasted space, as well as creating external and internal activity</i>		By author <i>The Cradle City building scales compared to the community centre</i>	

figure 85

140

By author

The informal dwellings use multiple materials that are usually found, they are then used...

figure 86

144

By author

Different materials will be taken and relating materials will be used on different parts of the building...

figure 87

160

By author

One of the dwellings in Kwena Malapo

Architectural Drawings:

All architectural drawings and renderings by author

List of Acronyms

CCDF	Cradle City Development Framework
NGO	Non-governmental organisation
ABET	Adult basic education and training
PV	Photovoltaic

[kmis]

kwena malapo informal settlement

Acknowledgements

I would like to the the following people for their invaluable contriburion to the research of this thesis:

Mabvuto and Maseline Phiri
Mariam Maina
Dylan Weakly
Kiki Doerman

I would also like to thank the following people for their support in so many other ways:

Robert Grant
Trevor and Glynis Courtney
Nigel and Gwynne Grant

It is a privilege to be given the opportunity to study and learn much about much.
This is the beginning of a journey.

Abstract

This thesis is based on a community called Kwena Malapo near Lanseria. It is a group of people that sit between the threat of relocation and the opportunity to develop along with the new proposed development of Cradle City. The land on which the informal settlement exists sits on the border of this development and the community are fighting to stay where they are.

They lack basic services and infrastructure have poor education and no skills investment which makes them vulnerable. The aim of this thesis is to put forward the design of a community hub that will serve the community, give them an opportunity for learning and contribution as well as the ability to develop with the new economic growth, instead of facing relocation.

Along with skills development and business opportunity the hub aims to serve the 13 informal settlements that surround Kwena Malapo.

Right:

A few dwellings in Kwena Malapo

By author

Figure 5: the outside area used for daily activity



Right:

Some of the children

By author

Figure 6: One of the most vulnerable groups in Kwena Malapo

Personal Introduction

Years before this thesis was embarked upon, a group of friends found some families in a small informal settlement near Lanseria. After spending many months with the children in this community a project called 'Lesedi' began. It was a Saturday school to supplement the poor education that they receive at the school they attend. This was a process of fetching children, driving them to a private school down the road, teaching them, feeding them, playing with them and taking

them home again. Those were the simple things. Amongst the things we were ill equipped to deal with were the death of parents and siblings, the sale of children, poor health conditions, not enough food, a lack of jobs and skills... the list continues.

Lesedi still continues for a small community near Lanseria leaving at least eight larger ones without it. It focuses on education which will help the families in the community to an extent. But as the people in

this settlement fight for their place in the city, what cries out louder than any of the problems but can be part of the solutions of many of these issues is belonging.

Social issues of this community will be looked at in the thesis with revelation of many intangible aspects of this lifestyle become evident. It is in recognising these and dealing with a solution that addresses these that I feel will be most successful.



Right:

Map of greater Lanseria district

By author

Figure 7: Showing Kwena Malapo in relation to Lanseria airport a representation of commercial opportunity

Thesis Introduction

Kwena Malapo, being an already established community expanded because the location is the most beneficial for the members of the community is fighting against their relocation.

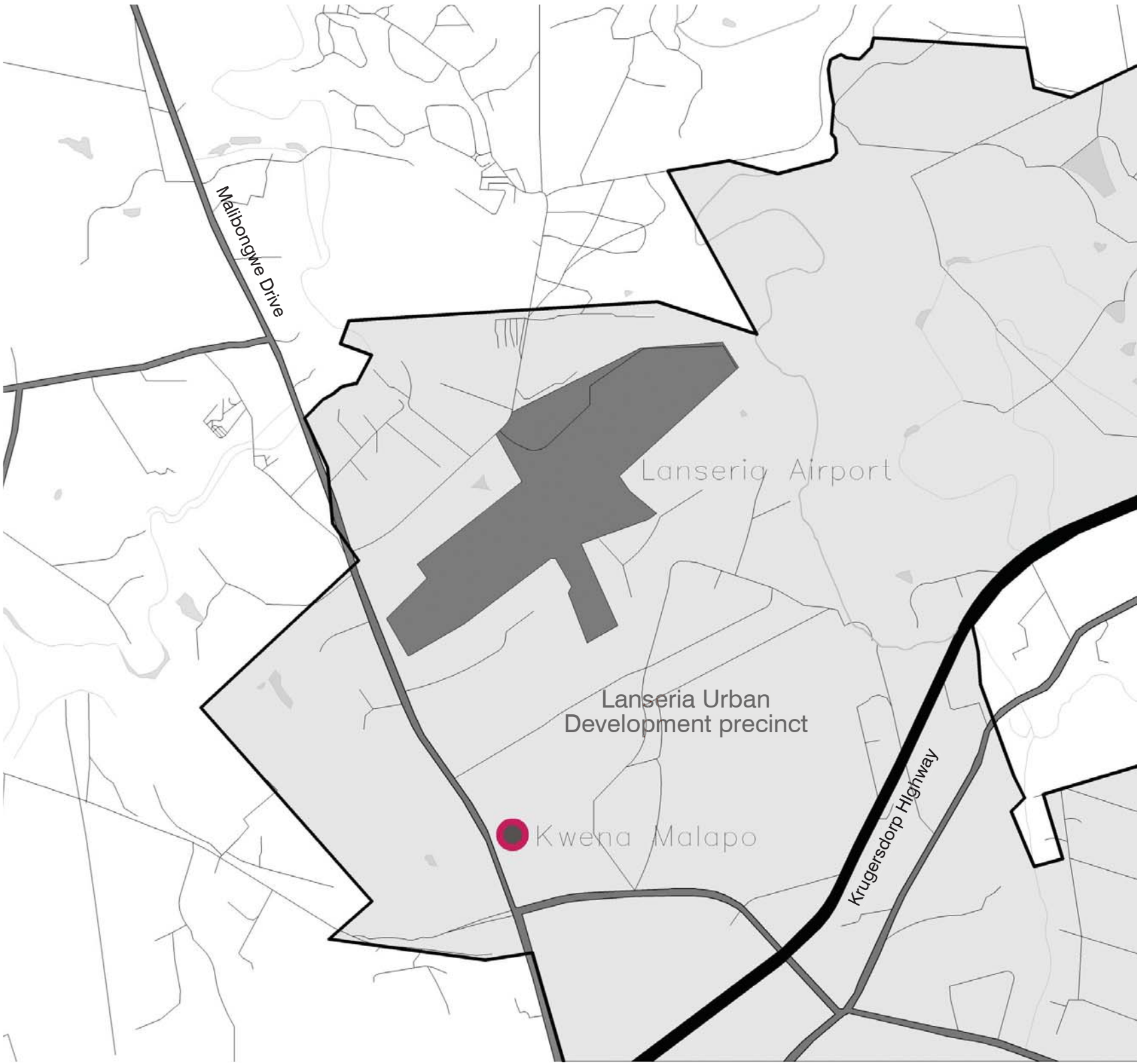
Those who have jobs find their location strategic; it is close to Malibongwe Drive which is a main route for taxis. It is between Lanseria Airport and industrial district, and Kya Sands industrial sector.

The settlement already has some existing brick buildings including original workers accommodation, a church hall and a preschool which children within the community attend. Moving Kwena Malapo would mean having

to replace this existing limited community building infrastructure and taking jobs away from ladies within the community.

Relocating this community also seems to be the extension of the remnant of forced removals from South Africa's past. It too displaces a group of people who have little option of where to stay in their current economic situation and puts different groups of people together under bad circumstances where there might become resentment based on competition for jobs in the new area or cultural differences which may be exacerbated by poor living conditions. It raises constitutional rights issues based on the betterment of infrastructure

and living conditions. The move does not guarantee these better living conditions or necessarily benefit the people being moved. It is also difficult to determine what affect willit have on the community being moved in on. Kwena Malapo might in fact be put in worse living conditions han they find themselves in now. And, with Kwena Malapo being on the boarder of the Cradle City development area and within the proposed Lanseria Development Framework, moving the existing settlement would seem to be a purposeful separation of these people from any opportunity to develop and contribute to the emerging commercial hub.



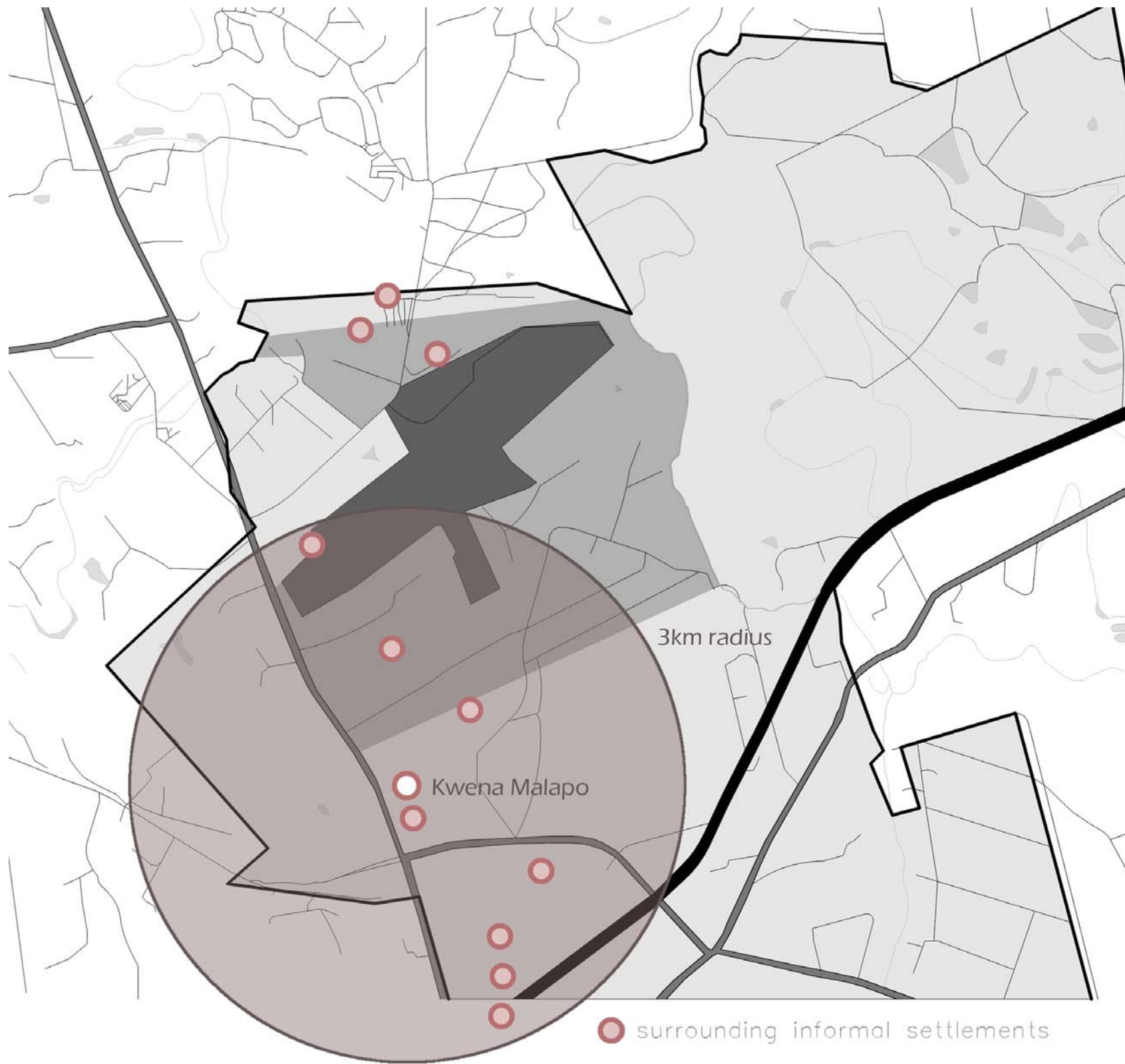
Malibongwe Drive

Lanseria Airport

Lanseria Urban
Development precinct

Kwena Malapo

Krugersdorp Highway





Left:

Map of greater Lanseria district

By author

Figure 8: Showing Kwena Malapo and the surrounding informal settlements

Above:

A better tomorrow

www.landesa.org

Figure 9: Showing the improvements that land rights can make to poor communities

In order to help the community function properly, grow and formalise the community, and increase the economic capacity of it, the following are proposed interventions:

To leave the informal settlement where it is and to use it as an anchor and magnet to the informal settlements

around it.

To provide basic services for the current community and the surrounding communities including basic healthcare services, home affairs services, police services, public library and educational services and social/communal space.

To invest in developmental programmes through design of classrooms, lecture rooms, workshops, urban farms, retail space, a restaurant, and a car wash.

To provide basic infrastructure of electricity, clean water and ablutions and kitchens.

Right:

Community issues and development infographic

By author

Figure 10: Looking at the physical and social issues that Kwena Malapo face

It is important to look at the livelihoods of the community following on from the design of a building and the analysis of theory and their current situation. This will be looked at in the following ways:

The part of the thesis that most naturally takes technical precedence is the self-reliance factor, the aspects that will serve the community in being able to develop.

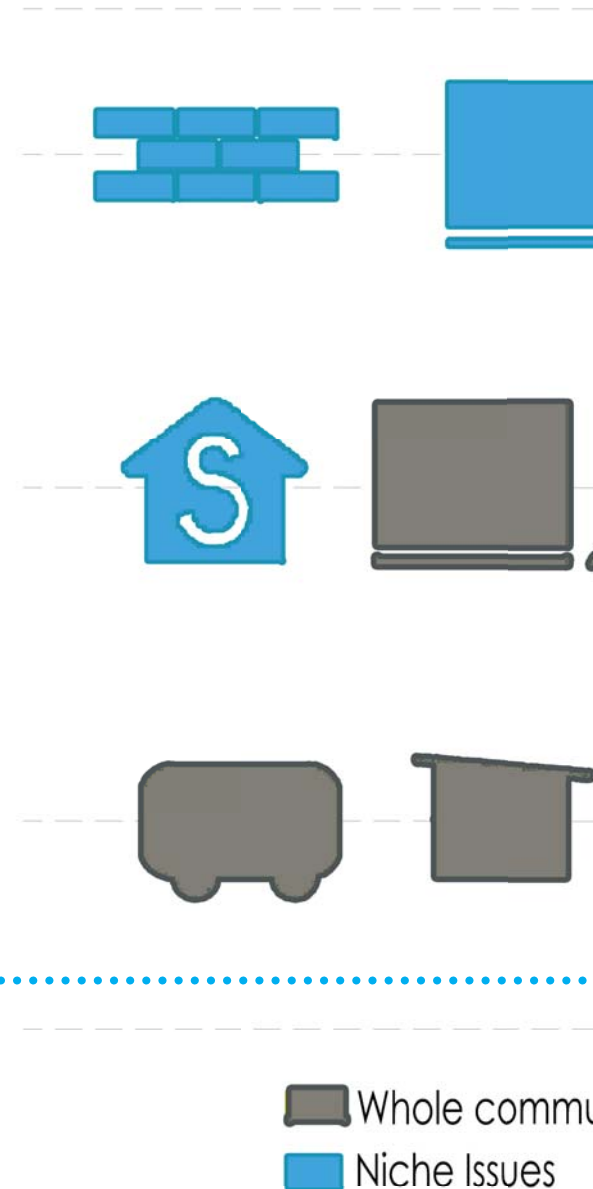
This could be done through a systems approach grouping electricity generation, water collection treatment and recycling, composting

for farming and linking this to the mini-urban design and the structure and skin of the building.

Research on systems and technologies that can do this, buildings that have innovative and appropriate ways of doing this for the community in which it is situated.

The final presentation of technology used in the building solution will be a series of plans, sections and axonometric drawings that will show each systems path and then details of critical points in the system and how they work.

aspects that will serve the community in being able to develop.



Long term

Short term

Trades are rare in South Africa and are therefore a good opportunity for skills development in the community

Very poor conditions

Services and infrastructure

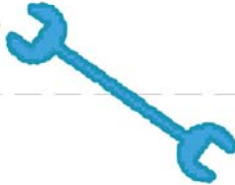
Skills development

Education

Housing

Food

Poor conditions

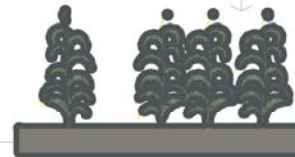


The settlement lacks any basic services, these services can be provided and will be necessary irrespective of what kind of development takes place in the future

The ability to give every person in the community the option of eating a healthy, balanced diet

Growing their own food would give the community more options of resources, develop skills and the option of small business development

The community need more buying power, buying food needs to become more affordable



Community issues
es



Community

kwena malapo

community and community theory

a community of self-reliance

a community facing relocation

Page 30:

Maseline walking to the nursery school to work

By author

Figure 11: This photo shows the distinction between the vulnerable community and the fenced off areas

Community and Community Theory

There must however be some guidelines that can be helpful as a starting point and the theory on community. In looking at self-reliance as an ever growing necessity to those not being provided for by a governmental system or a charitable institution, and even those that are currently being provided for may not be able to count on provision with the rapidly expanding population. Self-reliant communities are able to withstand the fluctuation of economic and social issues with much more stability than those who are reliant on the financial provision and the social complications that surround them, xenophobia being one of the prevalent examples in South Africa. Self-reliance extends from the ability

to provide for oneself; or a community for one's community; through job creation and skills development, good education within the community and financial loyalty to the community, as well as organisational aspects that help the community to function in a very efficient and secure manner.

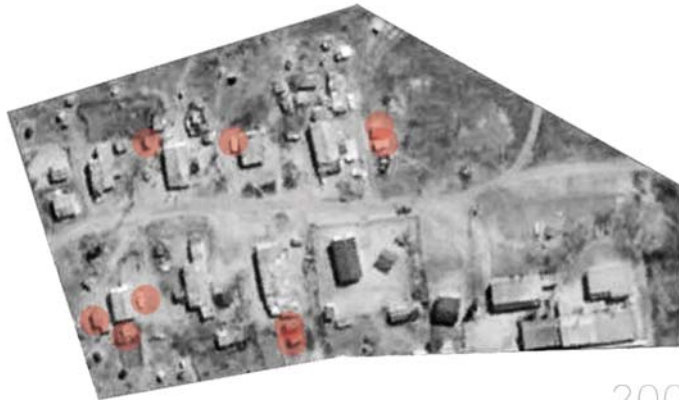
Location and the issue of relocation will be considered in terms of relationship and opportunity, and the approach to relocating a community. It will look at the impact of relocating the community and challenge the argument for the relocation of a community. This will then serve as a basis for the discussion in part two of the chapter in the discussion of the community of Kwena Malapo.



2004



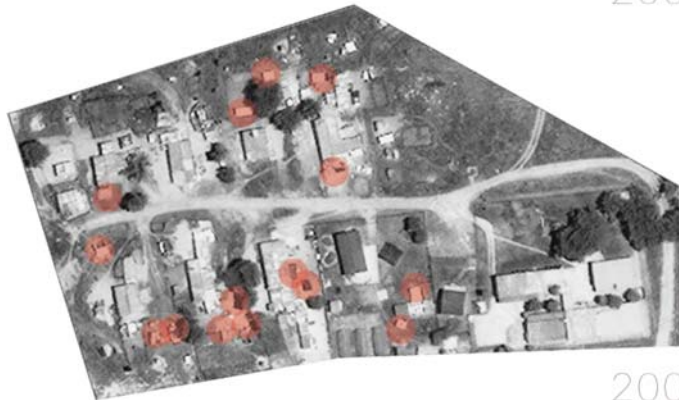
2010



2008



2011



2009



2012

Above:

Community issues infographic

University of Wits, Urban planning GIS database

Figure 12: The development of Kwena Malapo into an informal settlement over the last 9 years

A group of individuals that live together in one place becomes a community of people. In this there are two aspects of community that need to be considered, the first is the people within this community and the second is the environment surrounding this community. Each of these contributes individually to the state of a community but also is in tension with each other to create social anomalies found within any group of people.

Looking in more depth one can quickly recognise that there are multiple characteristics of a group of people that affect them both individually and as a group. It has been suggested that these inconsistencies between groups are critical because they are how we begin to understand a group

and its behaviour, character and lifestyle. Following on from this one can then determine the priorities of the group and through this a specific and appropriate design can be generated for them in their environment. It can prevent us from falling into the trap of designing for the group called people or South Africans or any unhelpful generalising terminology. (Awotona, 1997, p. 11)

It is quite apparent usually to see and understand what the needs of a community are, but what needs to be uncovered is the wants of the community and this largely seen through behaviour and interaction with a group of people because people differ to the extent to which they are affected by environments. (Awotona, 1997, p. 9) It is a common

misconception that large parts of community behaviour derive only from historical culture and that when interacting with a group culture often becomes the first surface of interactive sensitivity, however it is important to seek out and highlight the patterns and consistencies that emerge in a community outside of culture because in many instances these commonalities can be a better binding and more importantly can become the areas where a community finds its identity and a path of development. If attributes such as misplaced culture are misused they can become harmful to the way in which a community develops. The culture needs to be defined in terms of historical culture but also the adoptive culture of a group.

Other aspects of communities that need to be engaged with lie in the behaviour of the individuals in a group, the age and gender demographics, the skills available and the resources available. Individual wants need to be weighed up against group wants and the organisational structure within the community needs to be analysed and prioritised. One of the most telling aspects of how a community functions is evident in how a community firstly decides on how it will deal with crises (whether it be resources, behavioural, security, natural) and how this same community actions in one of these situations. Behaviour of a community can be defining for the experience of many people, but especially children within the community.

Once these are identified and prioritised the environment can be brought into the equation; it comes in at this point because it is rarely defining or formative in behaviour except for negatively contributing factors which severely limit behaviour or positive attributes of environments that become catalysts making possible behaviour which was previously blocked. (Awotona, 1997, p. 9) Social aspects can have a further reaching effect than any physical circumstance. The evidence lies in the incongruent comparison of wealthy, comfortable not necessarily happy individual or group to the poor, struggling not necessarily unhappy individual or group. What the environment has the opportunity to do

(and particularly the built environment in this regard) is providing resources and opportunity to allow a group to behave, achieve and be characterised without the confines that a bad environment or poorly structured environment inhibits. The conclusion of many theories on communities is that grouping people who positively affect the livelihood and experiences of those around them can vastly outweigh many a difficult physical circumstance in which one finds them. In fact many successful, developing communities grow and thrive despite their current circumstances. If the essence of community is the people around you it becomes a greater tool at your disposal.

Right:

Social aspect of community

By author

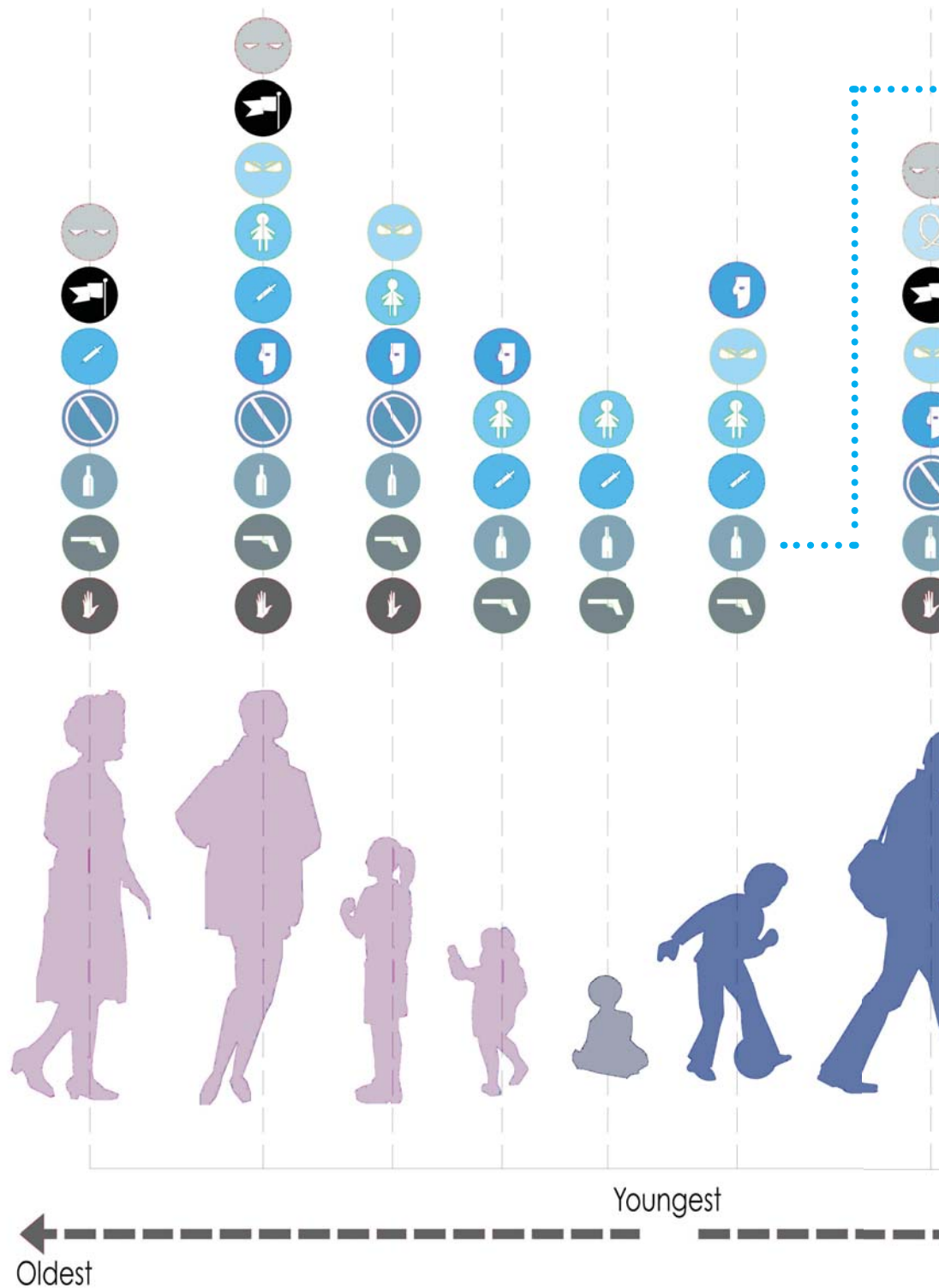
Figure 13: This seemingly idyllic photo shows that social aspects can have a further reaching effect than any physical circumstance.

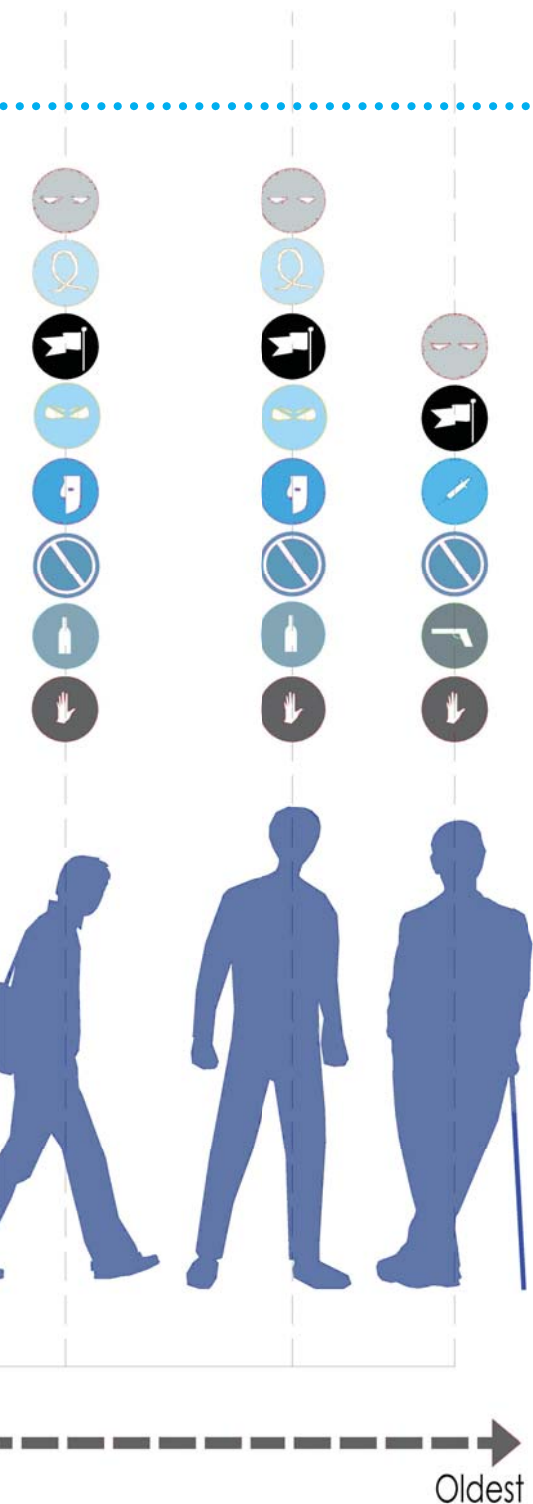




- 6  stealing
- 7  violence
- 8  drunkenness
- 6  lack of ownership
- 6  social activity & sport
- 6  poor healthcare

- 5  child vulnerability
- 5  jealousy
- 5  hopelessness
- 5  distrust
- 5  shame





The behaviour that is encountered in the community includes stealing, drunkenness and violence, the most prevalent being that of drunkenness.

Some of the major social issues that affect settlements such as Kwena Malapo lie far deeper than just the things that they lack. It is what they lack and how this works itself out in the community in different ways. One of the more individual outworking of a person in these living conditions, specifically in Kwena Malapo, are feelings of hopelessness, shame, jealousy and distrust. These have manifested themselves out of their lack of ownership, poor services and healthcare, and lack of entertainment resources.

drunkenness and violence, the most prevalent being that of drunkenness. The presence of these behaviours in the community makes different groups of the community either more vulnerable to directly be involved in these behaviours, or to become victims of people who practise them. In Kwena Malapo the children and women are particularly vulnerable to the men who get drunk regularly.

The behaviour that is encountered in the community includes stealing,

Left:

Infographic showing social issues in Kwena Malapo

By author

Figure 14: Different groups of people in the community are more vulnerable than others

Informal settlements are defined by the lack of basic amenities and very poor living conditions and are a reality to millions of South Africans. With very little progress made in recent years communities are left with no basic sanitation or a clean water supply, hazardous health and safety issues such as fires, security and disease (Misselhorn, 2012). Johannesburg also faces its additional obstacles in relocating informal settlements due to either repeated flooding or, existing tensions between the informal settlers and locals or landowners. The Johannesburg government has also had to concede to the following in terms of its terms of its expected service provision and service delivery responsibilities:

- It has inadequate service delivery

- It has not provided and poorly maintained any information for both

current and proposed projects in the area

- The limited or lack of knowledge or understanding of applicable planning processes and systems influencing the delivery process of residents

- Its failure in addressing high demand for housing, not just access to services (City of Johannesburg, 2012)

The implications of this far outweigh the immediate needs being met and are compounded both for the individuals and other services. Lack of clean water, heating and proper sanitation coupled with poor nutrition that is experienced by most people in informal settlements means a huge impact on health and affects both the ability of the individual to work or contribute in their community and puts strain on the public healthcare system. (Disler & Olver, 1984)

Informal settlements come about due to migration of rural groups into urban areas in search for work and due to the large influx and the lack of accommodations and space within the cities groups of people are pushed further out and are left with little option but to appropriate land, usually owned by the government. (Clinard, 1966, p. 50) Informal settlements have generally been established outside the formal land allocation system and this has had an effect on many people who are forced to live in peripheral areas where they are generally denied access to basic services such as education and healthcare. (Olufemi, 2001)

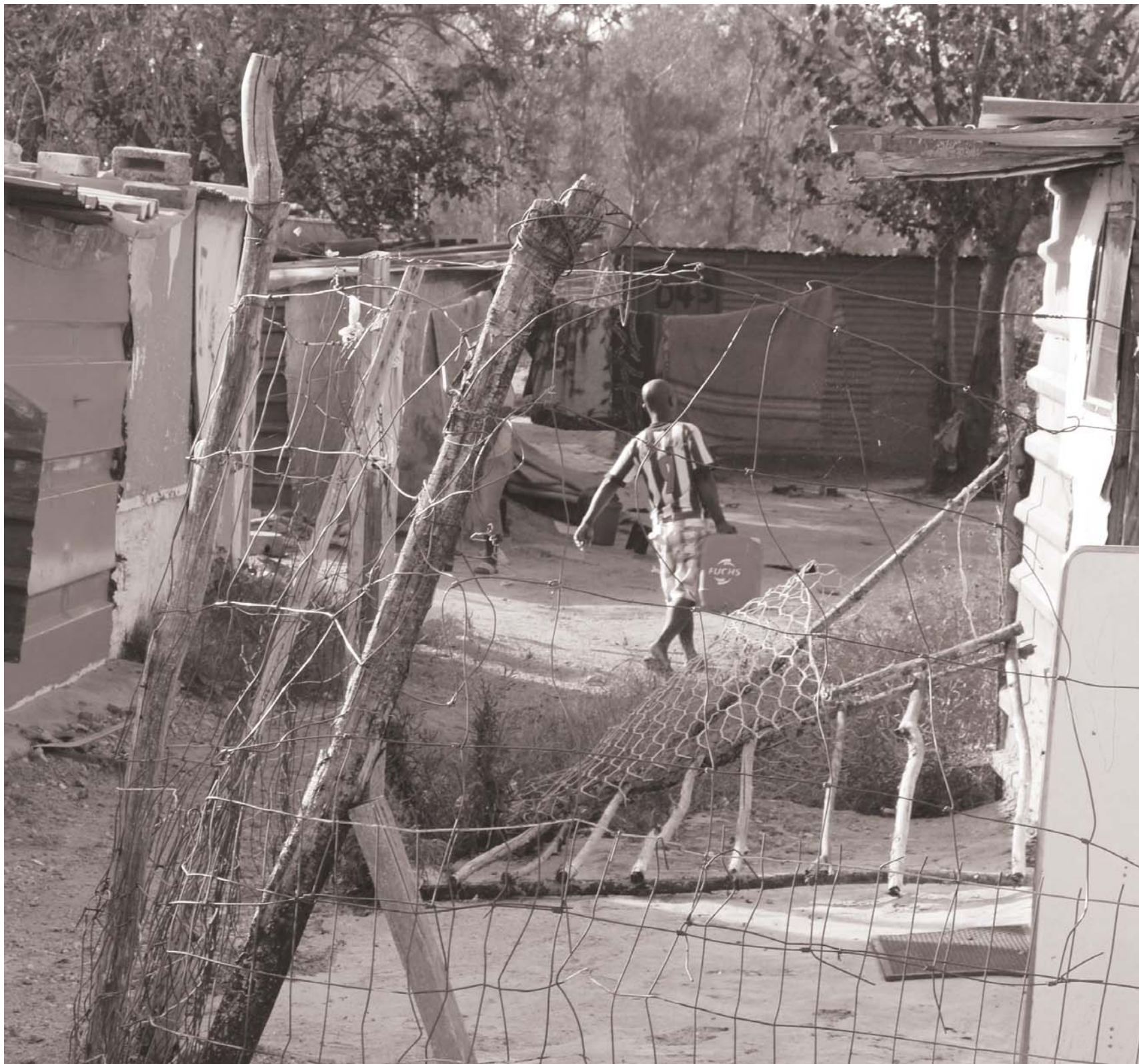


Right:

Social aspects of community

By author

*Figure 15: Social aspects can have
a further reaching effect than
any physical circumstance.*



Left:

The lack of water provision

By author

Figure 16: No running water means a long walk and long daily chores for the children that should be doing school work once they return home from school

This is less than ideal and brings about difficulties with every member of the group. Older members do not have access to the care and find it difficult to be mobile and find jobs; the children are often in poorly managed and under resourced schools and are at a staggering disadvantage to their wealthier counterparts, usually and still the case for many South Africans this is reflected racially. These overcrowded under developed areas continue to be leftover injuries from Apartheid and the neglect that many experienced, and although

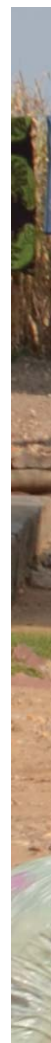
South Africa in theory gives equality to all, in practise the minority are still benefitting from the oppression of the underprivileged, uneducated victims and children of victims of the apartheid regime (Disler & Olver, 1984). Unfortunately informal settlements probably represent the best available option for any person in a position of depravity, relative to what their needs are and what is available and affordable for them in the city. And although they are facing most of the struggles mentioned above on a daily basis, members of

informal settlements actually gain easier access to any employment, any education and possibly many other services that are accessible to the best alternative by being in the place that they are. Other options tend to be further away meaning less accessibility or at a much higher cost. It is also because of this, that low income, subsidised houses, often in undesired or inaccessible locations are sold informally by recipients who would rather return to living in informal settlements. (Misselhorn, 2012)

The use of language such as slums eradication or slums elimination is problematic, it perpetuates the idea that informal settlements and their residents are considered illegal and unwelcome, that they fall outside of the human rights of our country, and that the state's primary response to them will primarily be through evictions and relocations. (Misselhorn, 2012) This negative association has led many people to think of informal settlements and their organic nature as the issue

to solve rather than a character to embrace. The real reason that we refer to them this way is because we find any other truer description of the living conditions of these communities quite offensive. It is also not the complete organisation and structure or formalising of a settlement that makes it better; many informal settlements provide community that built up neighbourhoods and urban sectors do not. We need to strip the negative connotation that the informal

settlement has developed as it is very untrue to its synonyms: relaxed, comfortable, natural and familiar. Beauty is most often found in the mismatched, handmade materials and tapestry of a township long before it is found in the townhouse complex with a choice of three floor plans or the security estate surrounded with electric fencing, barbed wire and badly proportioned pseudo European style buildings.



Below:

Mismatched colour in the community

By author

Figure 17: The makeshift washing lines and found material create texture and define areas in the community,



After speaking to the people in the community and spending time with them of the last two years it has become evident that the practical supply of basic living conditions are only part of the problems this community faces and is only as important as the social conditions that surround them. These include education and the facilities that are associated which affect the way the community functions. The younger members of Kwena Malapo are very aware of their disadvantage not having access to the internet and a library as well as sporting facilities. The whole community also lacks a gathering area or areas that they actually have access to and feel that there is a particular issue with entertainment. This might at first seem to be a shallow or frivolous issue but the lack

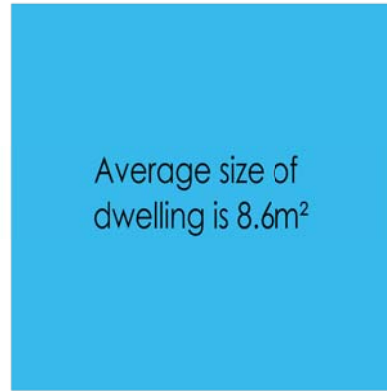
of structured facilities that allow for different types of entertainment and relationship building opportunities in a safe environment actually promotes a more creative way for the youth to entertain themselves and has also lead to an alcoholism problem with some of the men amongst the community.

All of the above issues can be dealt with in varying degrees and even be completely fixed quite practically. The issues that need to be taken into account are quite a lot more complicated than they seem at first. One of the immediate complications surrounding this community lies in the new development strategy and framework that has been set up in and around the Lanseria Airport expansion project. The current land

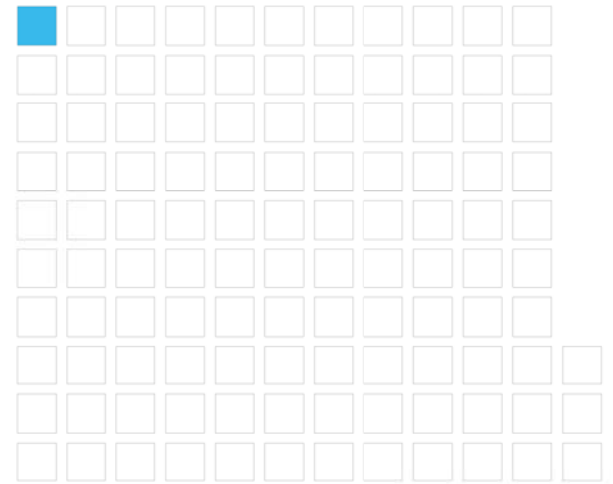
on which Kwena Malapo is sitting is demarcated for commercial use; subsequently the relocation of the people living there. This thesis will assume however that relocation is not an option and the solutions while including housing will respond to the commercial demarcation of the property. The second complication is the attitude of the people living in the community. This is not to be mistaken for an attitude problem but needs to be looked at in the stark deductions of the experiences of this community. It is doubtful as to whether this community is in the minority in its experiences but it will always be unique in its individual response to it and this will always be a consideration when looking at providing this community with what they need and what they need.



Average of 3.2 people
per household



Average size of
dwelling is 8.6m²



113 dwellings



377 people live in the community

Left:

Infographic of spacial living and community count

By author

Figure 18: This image shows the very close quarters that the residents of Kwena Malapo live in, although it is semi rural the urbanisation of this area will magnify the lack of service and infrastructure to communities such as this.



the additions made by informal settlers



the original workers buildings built by the land owner

Left:

Formal and informal housing types

By author

Figure 19: The original farm dwellings have been extended adding a more informal aspect to the settlement



The informal settlement in itself is not the problem; it is their inability to develop and be provided for and empowered that creates an overrun of people, in communities, without basic provisions such an urgent issue. A settlement should be allowed to be

as informal or formal as they desire but should not lack the resources to decide what they would and would not like to be informal about. We therefore embrace the community that is situated in an informal settlement, understand what they and

build a solution that will be a catalyst to facilitate them to build up their community in the way that they want; the best way to do this is by helping the community to become self-reliant.



Their experience is outlined in the scepticism of the following repeated incidences that have taken place; more broadly the issues of promise much and deliver little and more specifically the feeling of abandonment of the community. This has happened in the following instances; by the Methodist Church who set out to uplift it, the continuous well-meaning but unfinished and poorly executed interventions and projects of groups coming into the community but not really knowing the community (this includes farming tunnels and short term donations of toys, food and stationary). This has led to a growing apathy and

50

hopelessness amongst members of the community for ever bettering their personal living situations.

The long-term underlying socio-economic causes of informal settlements need to be properly recognised and more effectively addressed. This means a greater focus on much better education, appropriate skills development, and economic growth. The provision of basic infrastructure and housing but also a significant attention should be given to the development of our investment into people, which is the only sustainable basis for the socio-economic reformation in South Africa.

(Misselhorn, 2012). This is the basis on which Kwena Malapo needs to be restructured and the approach toward aiding them needs to be taken with sustainability in mind.

With this community consisting of many older members having a limited formal education and the younger portion of the limited good education but good access to bad education, the focus of development for them will be on education and skills development. The community needs to be invested into so that they can continue on to their goal of self-reliance and general upliftment. Education is a high priority to the community with them already



Left:

The Nursery School

By author

Figure 20: One of the services that the community has very restricted access to is slowly becoming delapidated

engaging their children in an adult education programme run through ABET and a Saturday School run on the premises of a private school in the area run by a few individuals for the children. Their participation in these programmes on a long term basis has proven their commitment to education and their desire and high value for education. This needs to be harnessed and expanded into skills in

order to benefit other members and aspects of the community.

Along with education this community has immediate needs including trades development, construction skills and farming skills. This will enable the community to grow their own food, build onto their facilities, repair and extend any infrastructure provided. The community needs to invest

back into themselves and commit to a programme that will involve all members of the community who want to realistically contribute.



Top Left:

The childrens school programme at Heronbridge

By author

Figure 21: Extra maths and english lessons on a Saturday try to compensate for the bad education these children receive

Bottom Left:

The childrens school programme at Heronbridge

By author

Figure 22: Unfortunately due to resources and the voluntary basis of this project only a limited number of children are able to attend.

One initiative in the community has sparked a willingness to and belief in change and development. Through a programme run by a few individuals with a group of children in the community every Saturday, one of the students from Kwena Malapo has applied for and received a scholarship to the private school in their area. For many of the children attending the Saturday programme and for many of their guardians witnessing the improvement in the childrens academics, this situation has allowed people from a different community with available resources to contribute

by building relationships and finding out what is most important in the community. Taking this approach, the most obvious enabling activities that would lead to the success of this relocation would be:

1. Taking the community, its needs, wants and opinions seriously
2. Providing a real relationship and developing mutual trust with the people in the community
3. Being honest about the realities of restraints and resources and what

exactly this change will provide

4. Giving much and expecting little as a starting point with the aim of reversing that relationship to encourage a self-reliant community

5. Actually building homes and facilities before expecting the community to move or at least making the product tangible to the community.



Community

kwena malapo

community and community theory
a community of self-reliance
a community facing relocation

Left:

An extended canopy in Kwena Malapo

By author

Figure 23: Some of the dwellings have extended coverings to try and extend the usable living space, especially in hot and wet weather

NAME Sizakele Thwala AGE 38

SKILLS _____ JOB _____

WHO DO YOU LIVE WITH I live with my kids.

HOW WOULD YOU DESCRIBE YOUR LIVING CONDITIONS

My living conditions is not fine because I am living in the informal settlement where there is not electricity and no development at all, but I am happy because I am staying with my children.

WHAT DON'T YOU HAVE THAT YOU NEED THE MOST

I need a better job with better salary.

WHAT DON'T YOU HAVE THAT YOU WOULD LIKE

I would like to stay with my mom and my kids in a better house with everything I need inside.

HOW DO YOU FEEL ABOUT THE PEOPLE THAT LIVE AROUND YOU

Well I can say that I am not feeling okay with them because when I see them they are full of selfish they want everything to be owned by them.

WHAT ARE THE MAJOR PROBLEMS WITH WHERE YOU LIVE

Electricity: Children can't study using the candles.

HOW DO YOU FEEL YOU FIT INTO THE CITY

I don't feel fitting the city at all.

Left:

Community questionnaire

By author

Figure 24: An example of the initial feedback from the community outlining their basic needs and issues.